



Creative Zen Vision W LCD Screen Replacement

This guide will show you how to remove and install a new LCD screen in your device.

Written By: Tim Wilson



INTRODUCTION

This guide will show you how to remove and install a new LCD screen in your device. Use this guide if your screen is broken or damaged and needs to be replaced.

TOOLS:

- [Spudger](#) (1)
 - [iFixit Opening Tools](#) (1)
 - [Phillips #0 Screwdriver](#) (1)
-

Step 1 — Front Cover



- Remove 2 screws (2.5 mm) on the top of the device using Phillips #0.

Step 2



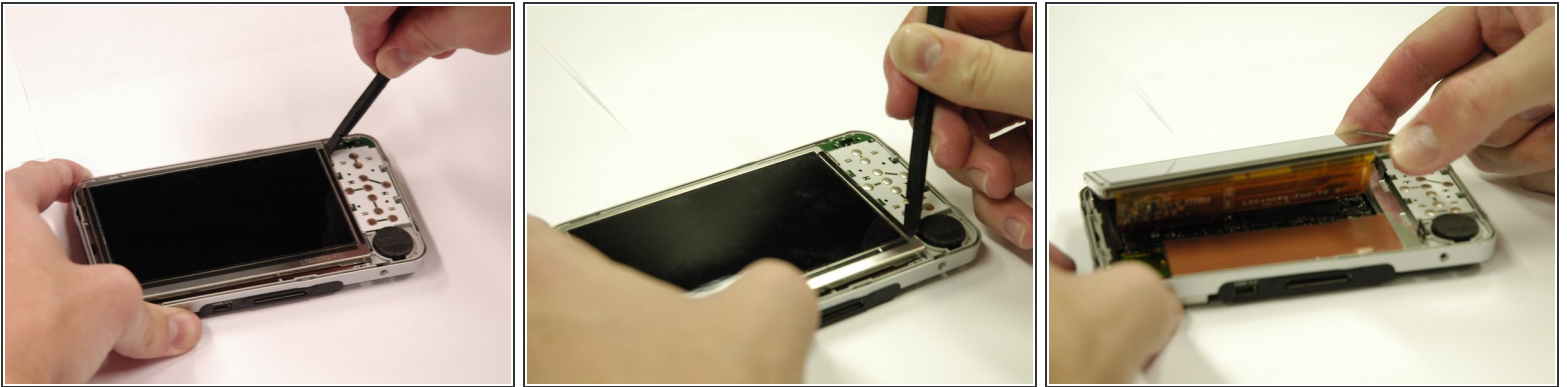
- Remove 2 screws (2.5 mm) on the bottom of the device using a Phillips #0.

Step 3



- Use a spudger to get between the cover and the screen. Carefully lift the cover off of the screen without putting too much pressure on the screen.
- When the cover has been lifted off the screen, use your hands to remove it from the device.
- The button pad may fall off when the cover is removed.

Step 4 — LCD Screen



- Use a spudger to separate the metal tabs that hold the screen in place on the right side.

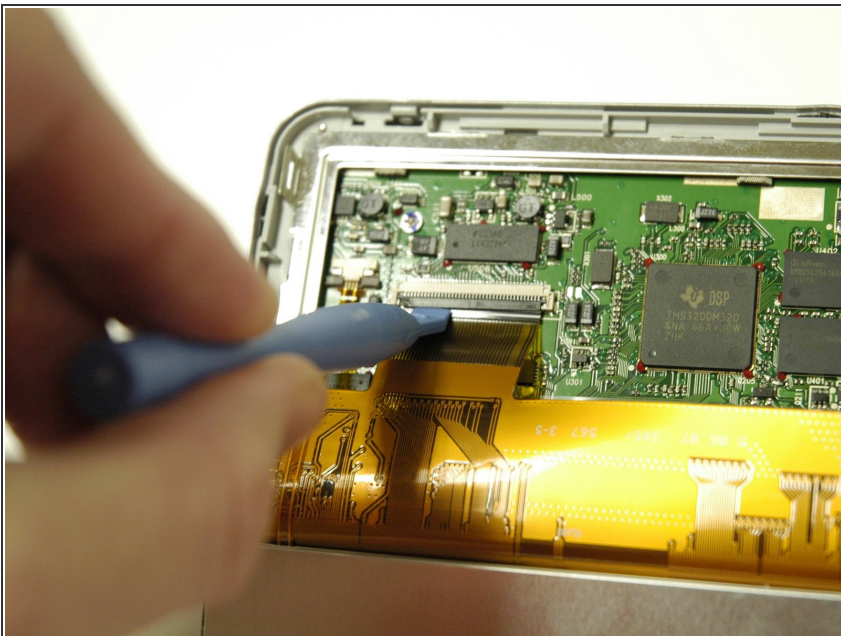
⚠ The screen is still attached underneath with two ribbon cables. Lift it very carefully.

Step 5



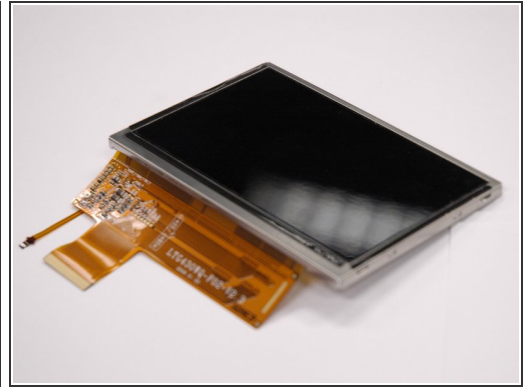
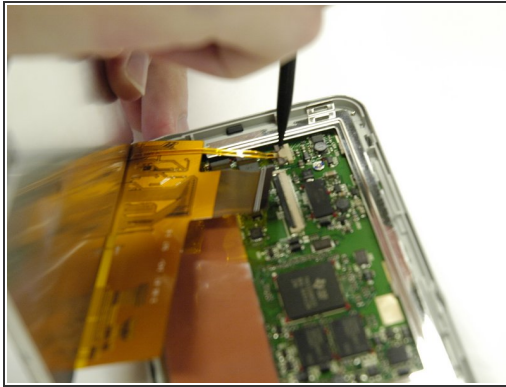
- Put the screen face down so you can see where the ribbon cables are attached.
- Remove the red sticker that covers the ribbon cable connections.

Step 6



- Use a plastic opening tool to get underneath the black flap on the larger ribbon cable connection and lift it.

Step 7



- Use a spudger to slide the two small gray tabs away from the ribbon cable connection.
- Remove the screen from the device.

To reassemble your device, follow these instructions in reverse order.