



# Creative Zen X-Fi LCD Screen Replacement

Disconnect the LCD screen's ribbon strip from the motherboard.

Written By: Westley Courchene



# INTRODUCTION

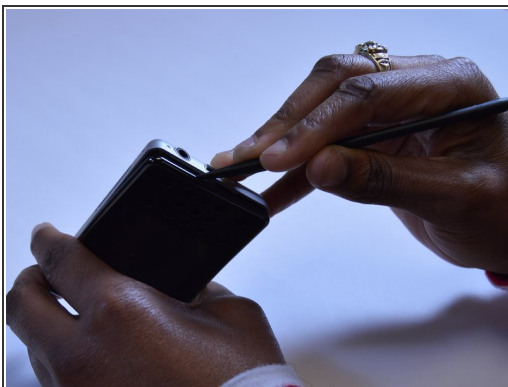
The LCD screen is an output component that displays information to the user.



## TOOLS:

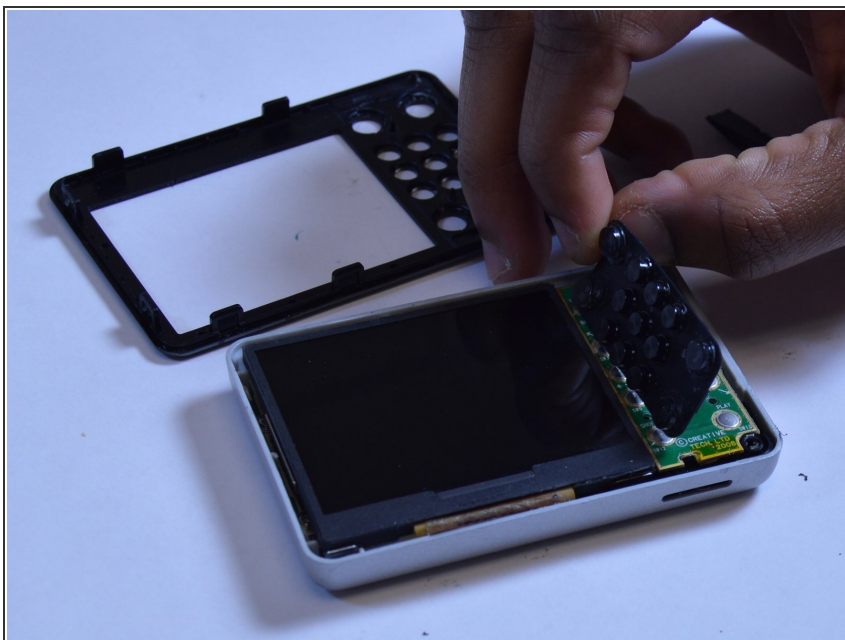
- [Phillips #00 Screwdriver](#) (1)
  - [Spudger](#) (1)
  - [iFixit Opening Tools](#) (1)
-

## Step 1 — Detaching Front Case



- Using a spudger, wedge the tip between the front and back case to pry them apart.
- ⓘ Be careful to not apply excessive force since there are six fasteners on the screen's side that holds the cases firmly together.

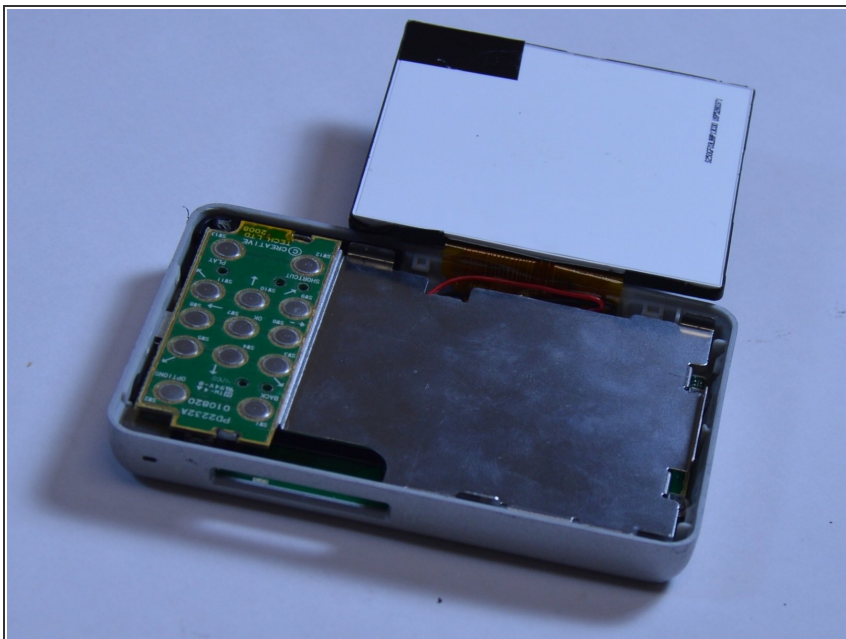
## Step 2 — Rubber Button Cover



- The black rubber button pad can be removed by simply picking it up.

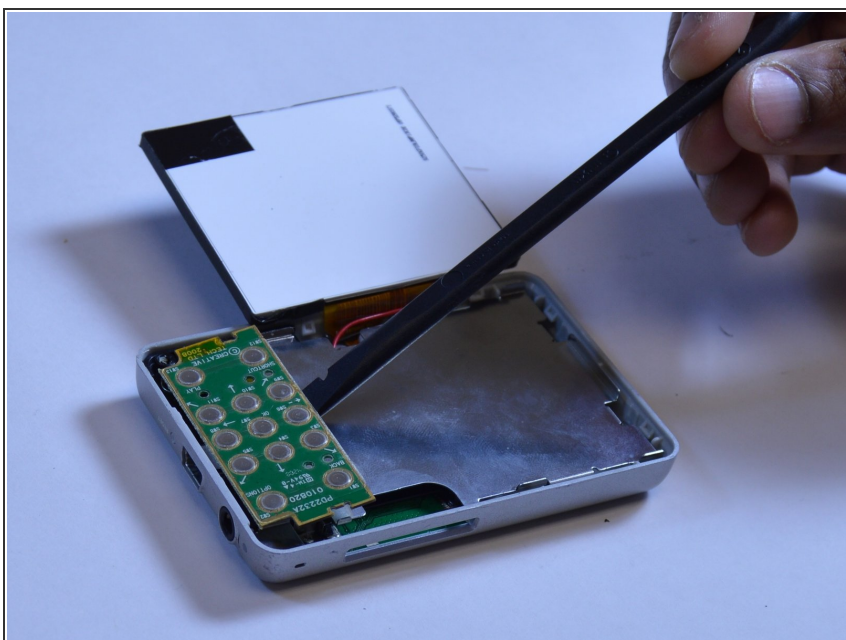


### Step 3 — Button Input Chip Part 1



- Flip the LCD screen off the midsection plate to gain access to the space around the input button chip.

### Step 4 — Button Input Chip



- Using a spudger, pry off the button input chip from the mid-section of the device. To gain best leverage,

start at the bottom right corner and level your way up the side of the chip.

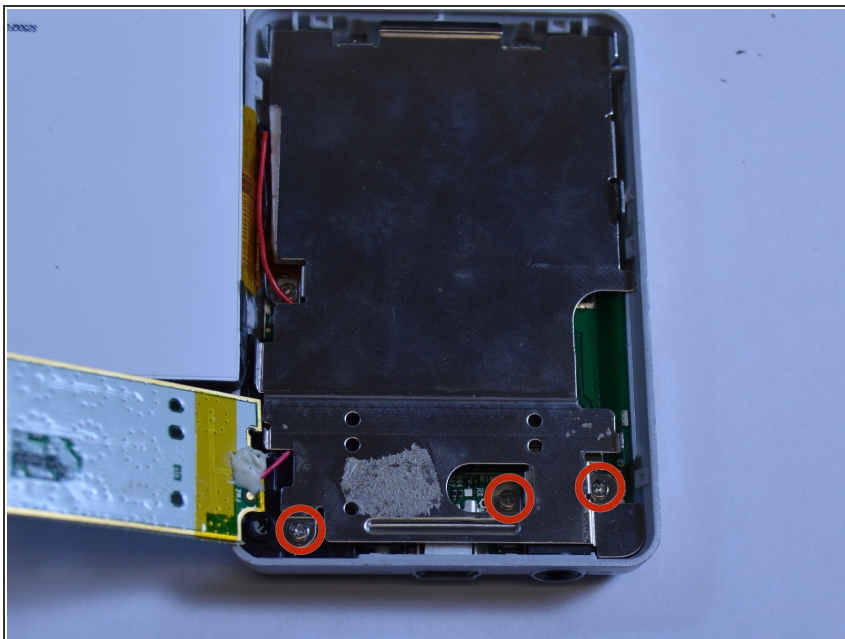
- ⓘ Be aware that the button input chip is glued to the mid-section, so some extra force may be required.

## Step 5 — Access Midsection Plate



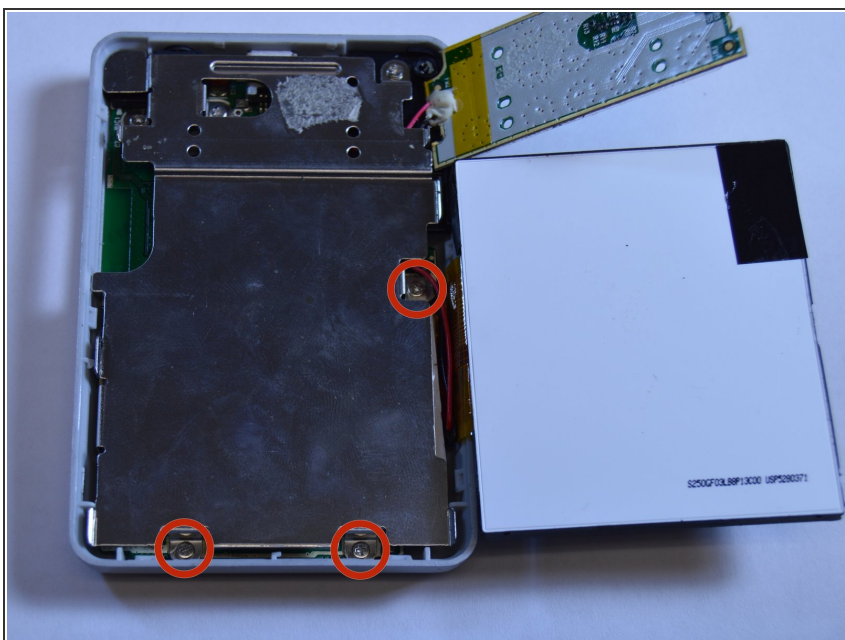
- Lift open the LCD screen and button input chip to access the entire midsection plate.

## Step 6 — Unscrew below Button Chip



- Use a Phillips Head screwdriver to unscrew the three 3/16 inch screws that were underneath the button input chip.

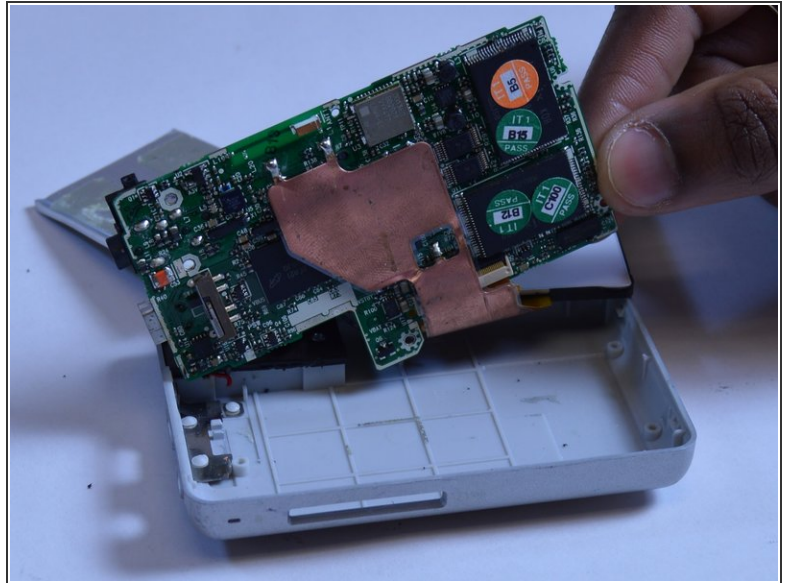
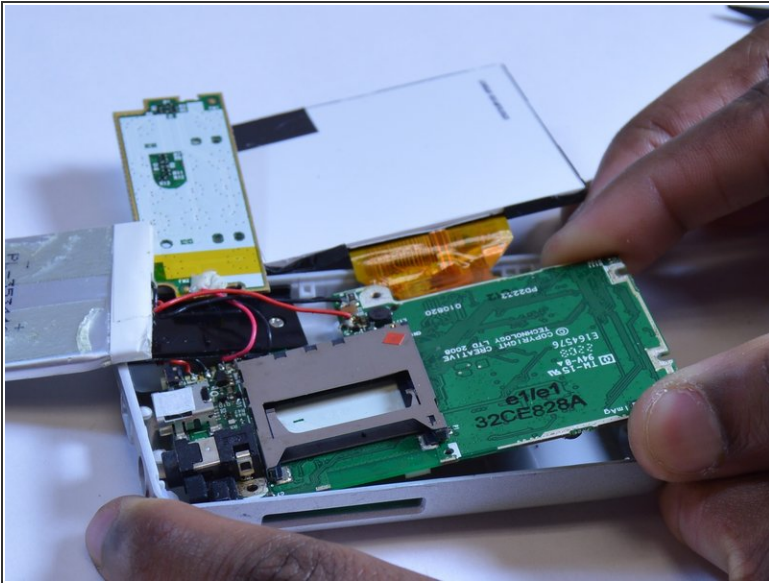
## Step 7 — Unscrew below LCD Screen



- Use a Phillips Head screwdriver to unscrew the three 3/16 inch screws that were underneath the LCD screen.



## Step 8 — Pull the Motherboard Out



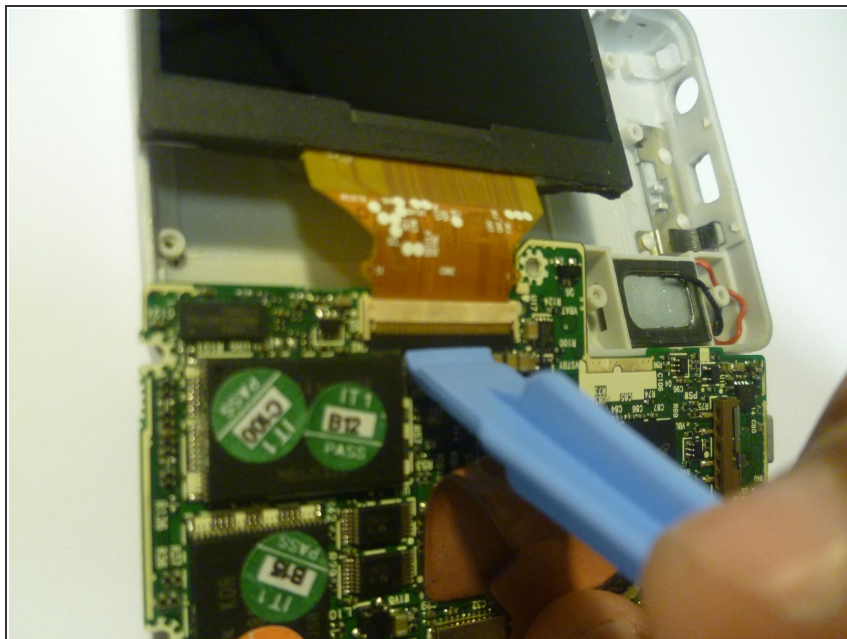
- Lift the right edge of the motherboard off the back case.
- Using two fingers to grip the edge of the board, slide the motherboard out of the case to the right.

## Step 9 — Disconnect the LCD Screen



- Use two fingers to peel back the edge of the ribbon connector that is glued to the bottom of the LCD screen.

## Step 10 — Unlatch the LCD Screen



- Using a plastic opening tool, unlock the ribbon connector by unlatching the black lever that pins it on the motherboard.
- Once the black lever arm is open, pull the ribbon connector out to disconnect the LCD screen.

To reassemble your device, follow these instructions in reverse order.