



Crock-Pot Express Crock Multi-Cooker Heating Element Replacement

How to replace a Crock-Pot Express Crock Multi-Cooker heating element.

Written By: William Kelly



INTRODUCTION

The heating element brings the device up to temperature allowing the pot to pressurize and cook. A failure of the heating element will cause the pot not to heat properly.



TOOLS:

- [Adjustable Wrench](#) (1)
 - [Phillips #2 Screwdriver](#) (1)
 - [iFixit Opening Tools](#) (1)
-

Step 1 — Power Cord



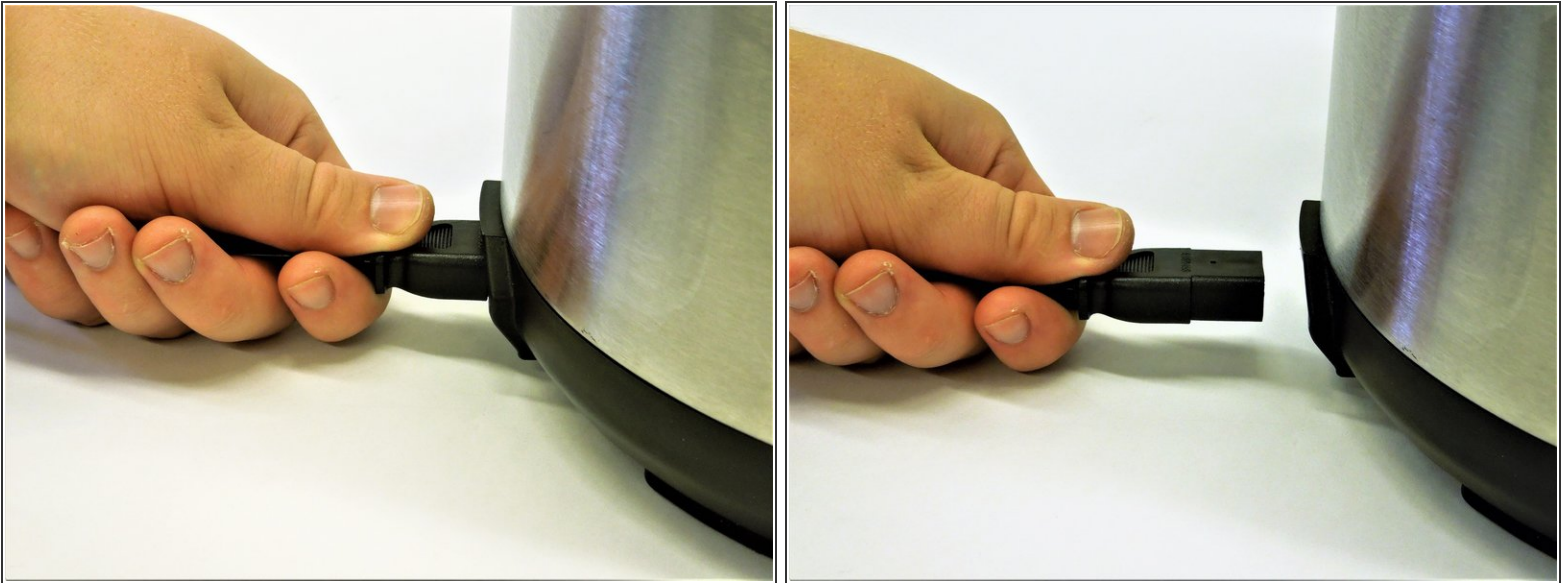
- Remove the power cord from the wall outlet first, disconnecting power from the device.

Step 2



- Orient the device with with the LED facing away from the user allowing access to the input jack of the power cord.

Step 3



- Grasp the power cord input connector firmly with forefinger and thumb.
- Without tugging, apply pulling force until the connector is free from device

Step 4 — Lid



- Orient the crock pot where the lid locked and unlocked icons are visible.
- Grasp the handle firmly and turn the lid clockwise until the arrow and the lid unlocked icon are facing each other.
- Remove the lid.

Step 5 — Heating Element



- Remove the inner pot and set it aside for reassembly.

Step 6



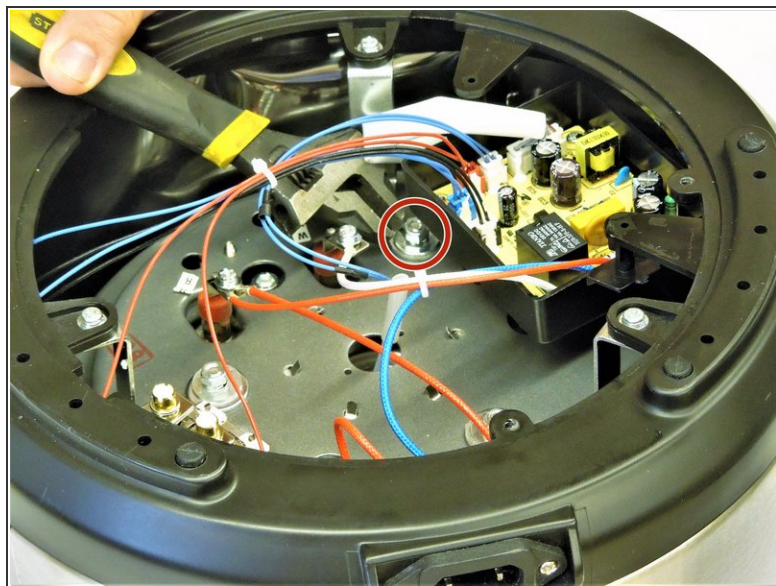
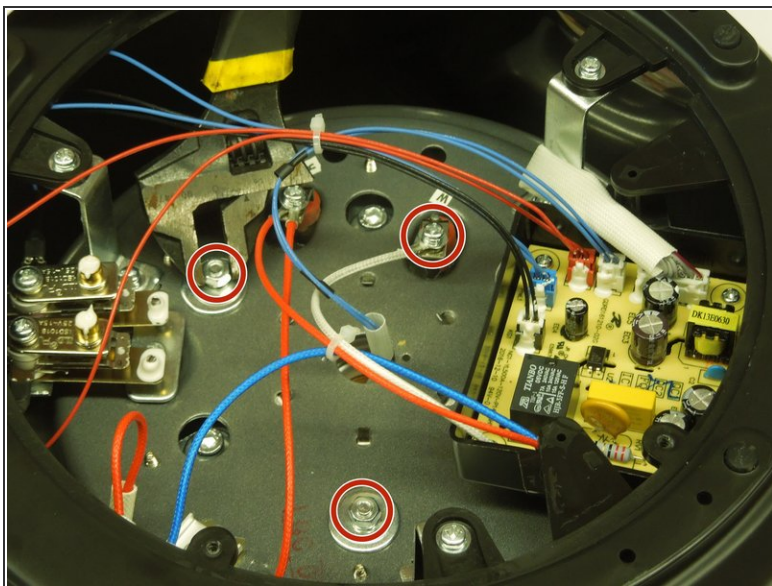
- Carefully rotate the Crock-Pot so that the bottom is facing upward, allowing access to the electrical panel.
- Remove the two 12.4 mm screws with a Phillips #2 screwdriver.

Step 7



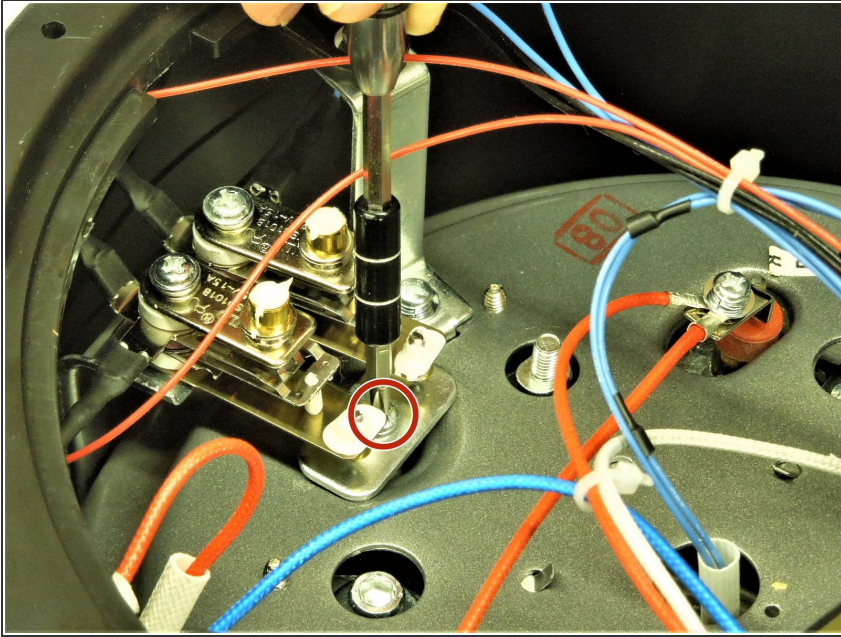
- Rotate the electrical panel cover counter clockwise and pull up until the panel comes free.

Step 8



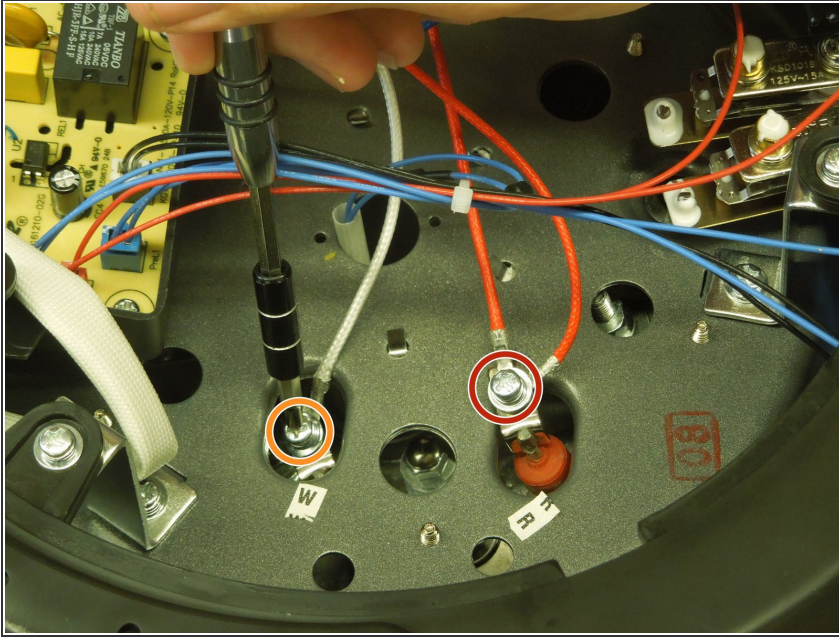
- Remove 3 nuts, 3 washers, 3 spacers, and 3 lock washers using an adjustable wrench to free the heating element from the Crock-Pot housing.

Step 9



- Remove the 10mm screw and metal plate beneath the electrical nodes using a Phillips #2 screwdriver.

Step 10



- Remove the 2 red wires from the terminal post by unscrewing the 10mm screw using a Phillips #2 screwdriver and label terminal post as red.
- Remove 1 white wire from terminal post by unscrewing the 10mm screw using a Phillips #2 screwdriver and label terminal post as white.

Step 11



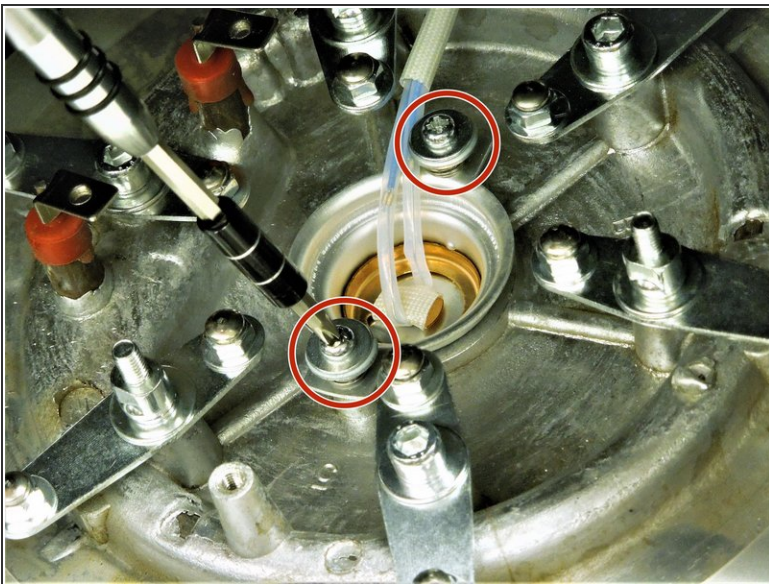
- Reorient the crockpot on its side to prepare for the heating element removal.

Step 12



- Carefully pull the heating element out and rotate it until bottom side is facing up out of the pot.

Step 13



- Remove both 19mm screws from the cutout switch housing using a Phillips #2 screwdriver, freeing the heating element from the device.
- Carefully remove the heating element from the device.

To reassemble your device, follow these instructions in reverse order.