



Crosley 33301 Front Glass Replacement

Replacing the broken glass on a Crosley 33301 alarm clock.

Written By: Tenaya



INTRODUCTION

This guide will tell you how to replace the face of the Crosley 33301 alarm clock.



TOOLS:

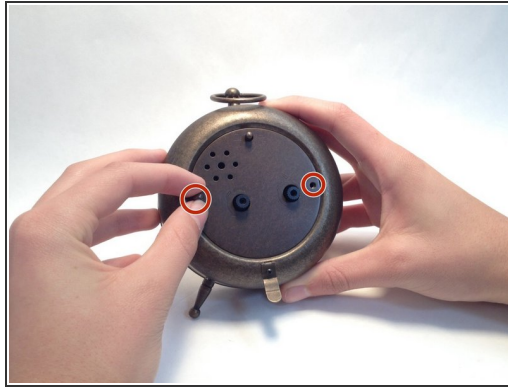
- [Phillips #2 Screwdriver](#) (1)



PARTS:

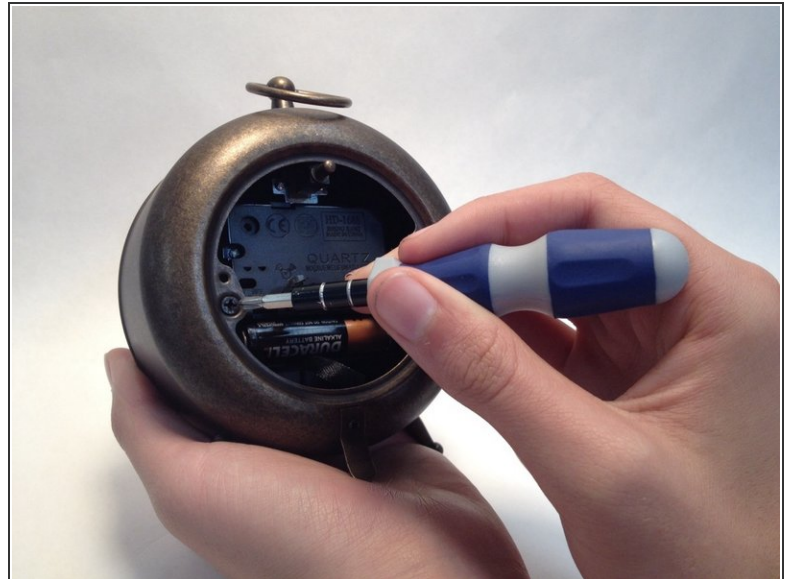
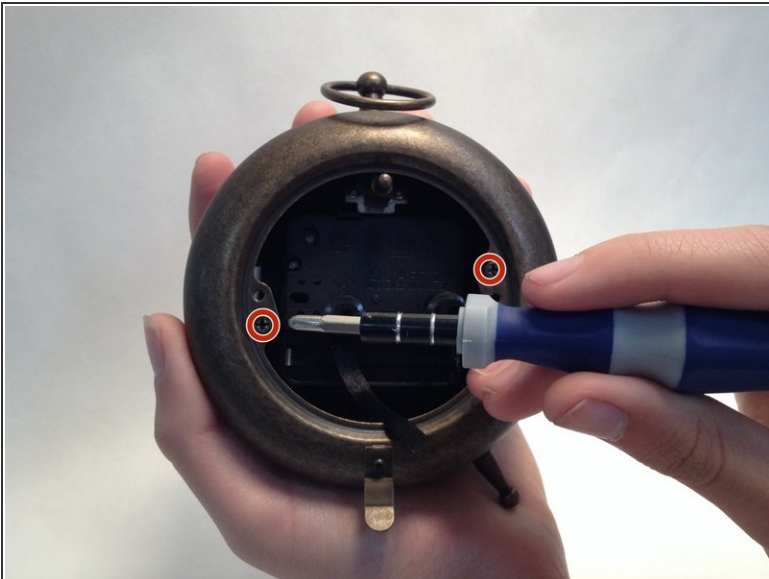
- [Circular Glass Clock Face 10](#) (1)
10 cm in diameter

Step 1 — Crosley 33301 Front Glass



- Rotate Clock till the face/or front is pointing away from you.
- Continue on by unscrewing the 5.5 millimeter screws with your hands.
- Once all the screws are removed, take the circular back panel off and lay it down flat on a stable surface to put back on later.

Step 2



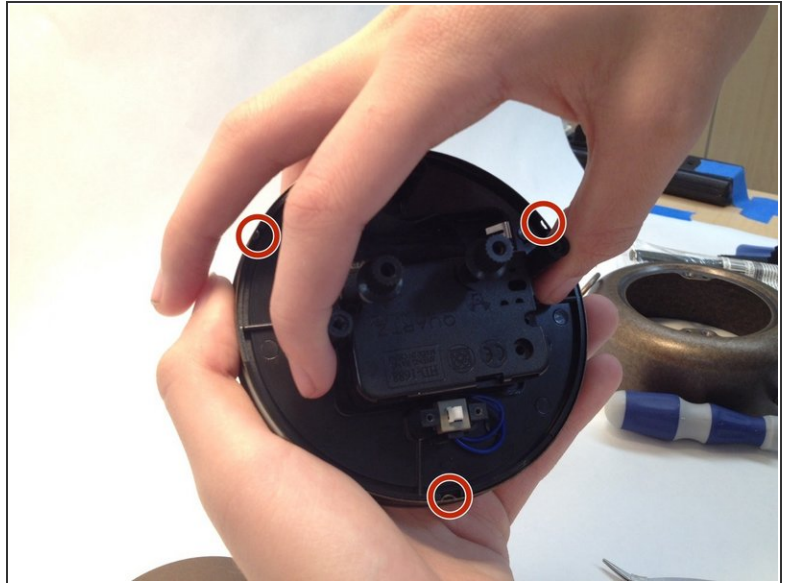
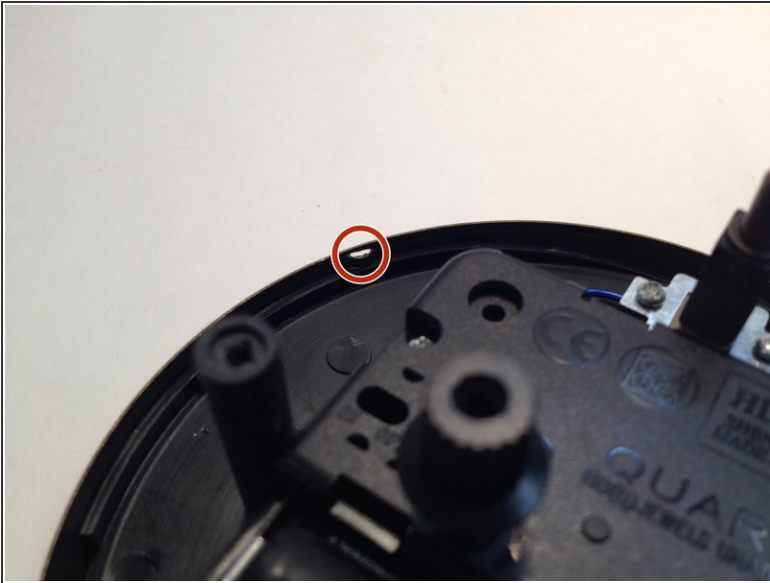
- Unscrew the two remaining screws with a PH2 bit.
- ⓘ Do not be afraid to use additional force to remove these screws. Just be careful not to break the clock!

Step 3



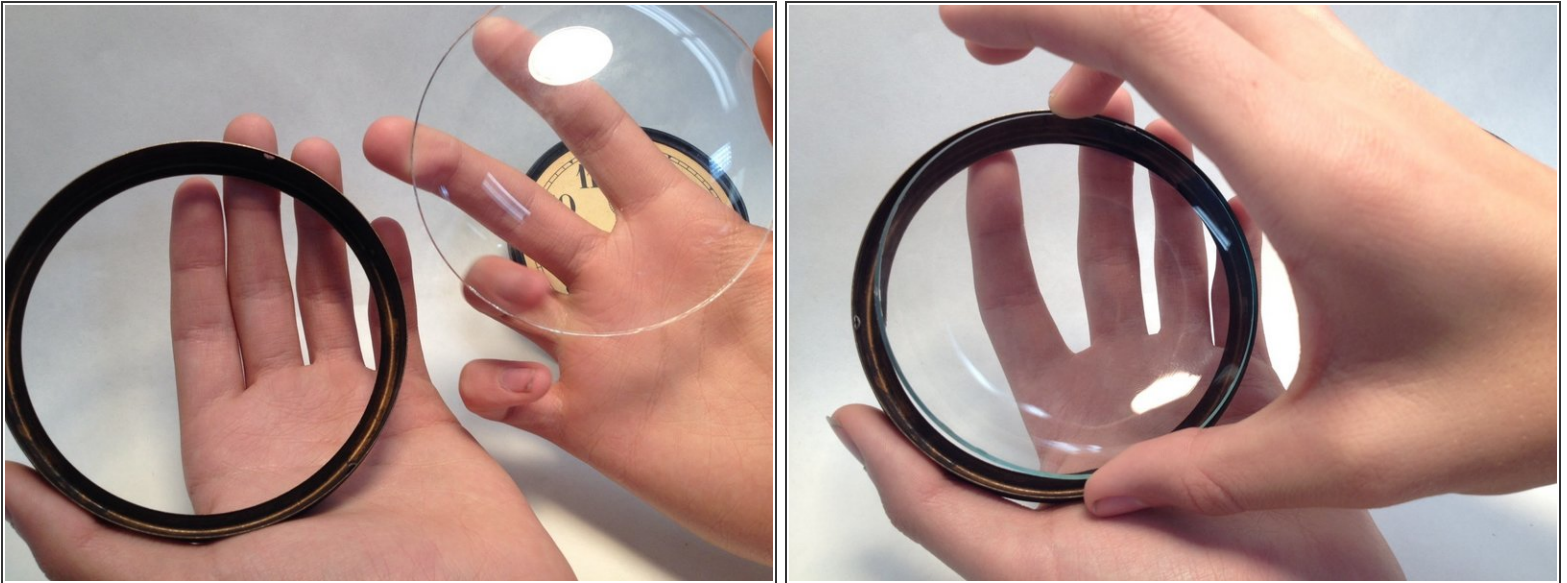
- Remove the front part of the clock from the back frame.
- ⓘ No major force is required. The back frame should slide right off.

Step 4



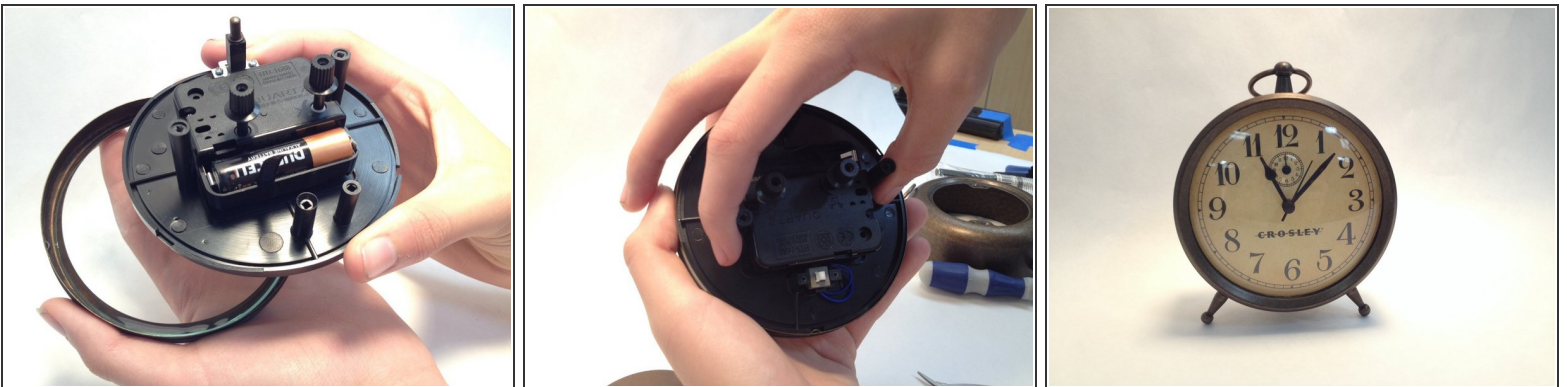
- You will notice that there are three small indents on alternate sides.
- You will see small slits where the indents can slide through.
- Twist the center counter clockwise so that the face and the back are no longer connected.

Step 5



- Replace the front of the clock with your new glass face protector and settle it on the frame.
- i** The glass for this clock is 10cm in diameter. It would be best to use glass that fits this measurement!

Step 6



- Apply the clock face back on the frame, then reverse your steps. Take a step back and admire your handiwork!

To reassemble your device, follow these instructions in reverse order.