



# Crosley CR704 Drive Belt Replacement

Use this guide to replace the drive belt on your Crosley CR704.

Written By: MarkAnthony



## INTRODUCTION

The Crosley CR704 turntable is belt driven. This means the motor that spins your records is attached to the platter via a belt.

If you can hear the motor under your turn table working, but the platter won't spin, you may need to adjust or replace your drive-belt. Follow these easy steps to do so.



### TOOLS:

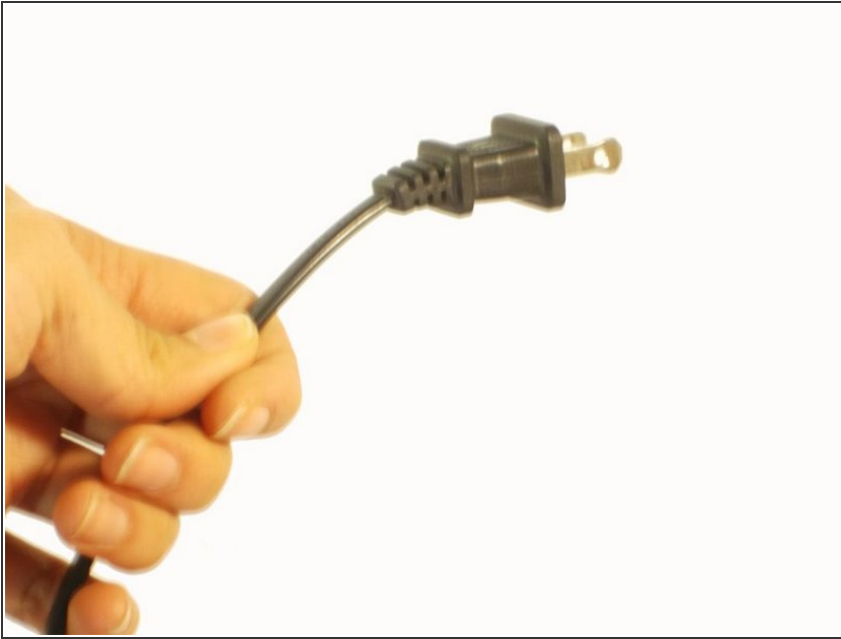
- [Flathead Screwdriver](#) (1)
- [Spudger](#) (1)



### PARTS:

- [drive-belt](#) (1)

## Step 1 — Safety





- Unplug power cable (if it's plugged in) so you don't electrocute yourself (or loved ones).
- Secure tone arm so it doesn't hurt itself (or you).

## Step 2




- Using a flat edge (such as a spudger or a flathead screwdriver) pry the C-clamp from the center spindle by wedging the flat edge between the spindle and the C-clamp.

 The C-clamp may pop off unexpectedly, so be careful it doesn't fall somewhere hard to reach.

 The C-clamp is what holds the platter in place. With it removed, you can now get under the platter.

## Step 3




- You can now lift the platter.
-  The drive-belt will be found either around the bottom of the platter or around the motor.
- If the drive-belt is broken it will need to be replaced. If it is loose, you can simply re-secure it.

## Step 4



- To replace the belt, wrap it around the inner circle of the bottom of the platter. Then stretch the belt around one of the two pegs found near the outer edge of the bottom of the platter.

 This will be a snug fit, so be careful not to snap the rubber belt!

## Step 5



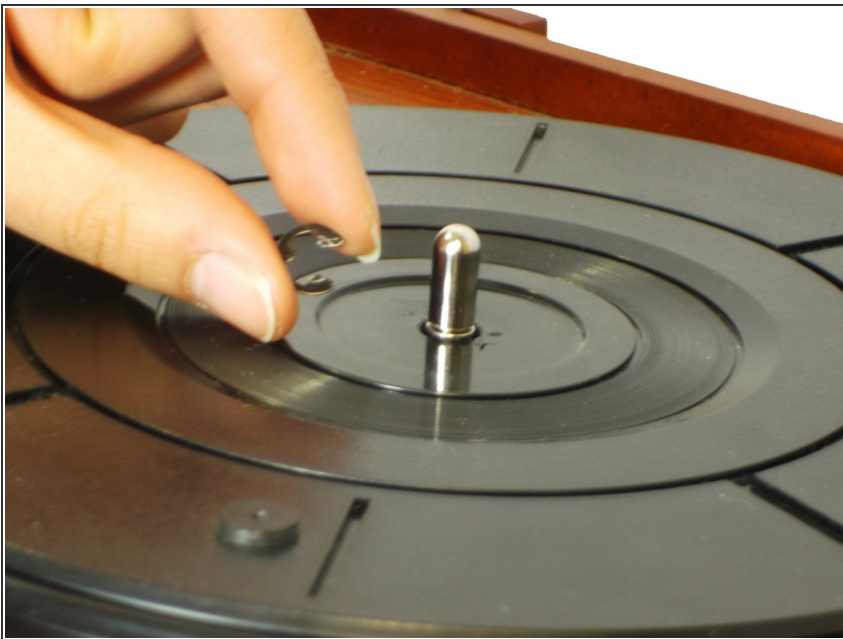
- Using your thumb as a guide, place the platter back onto the motor so that the peg holding the drive-belt wraps around the outside of the brass motor post.

## Step 6



- Secure the platter all the way down and spin the platter clockwise until you hear a pop and feel resistance from the drive-belt catching.

## Step 7



- You can replace the C-clamp by shoving it back into place around the center spindle (this will require some force).
- ⓘ It's not necessary to replace the C-clamp unless you plan on moving the device around.

Test by playing a record. We suggest "Take Five" by The Dave Brubeck Quartet.