



CrystalView NB4-35788 Face Plate Replacement

This guide will demonstrate how to replace the face plate of the CrystalView NB4-35788.

Written By: Courtney Clark



INTRODUCTION

Replace the face plate to restore the visual quality of your device.



TOOLS:

- [Phillips #00 Screwdriver](#) (1)
 - [Spudger](#) (1)
-

Step 1 — Face Plate



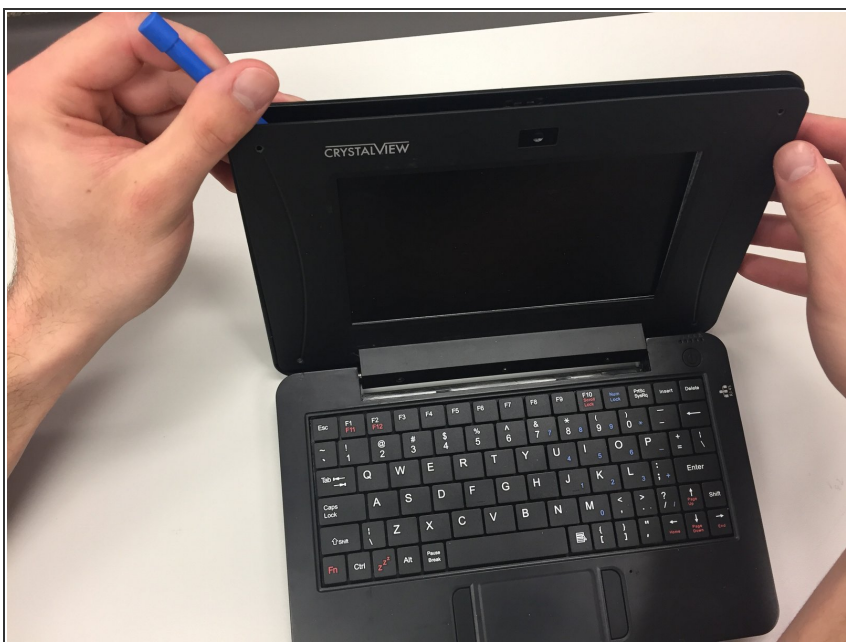
- Remove each of the three screws located near the bottom of the screen using a Phillips #00 screwdriver.

Step 2



- Remove each of the 4 screws located at the corners of the face plate.

Step 3



- Carefully lift the entire perimeter of the face plate using a plastic spudger.

Step 4



- Pull back the edge of the face plate to remove it.

To reassemble your device, follow these instructions in reverse order.