



Cuisinart CHW-12 Water Hoses Replacement

Written By: Trevor Aspinall



INTRODUCTION

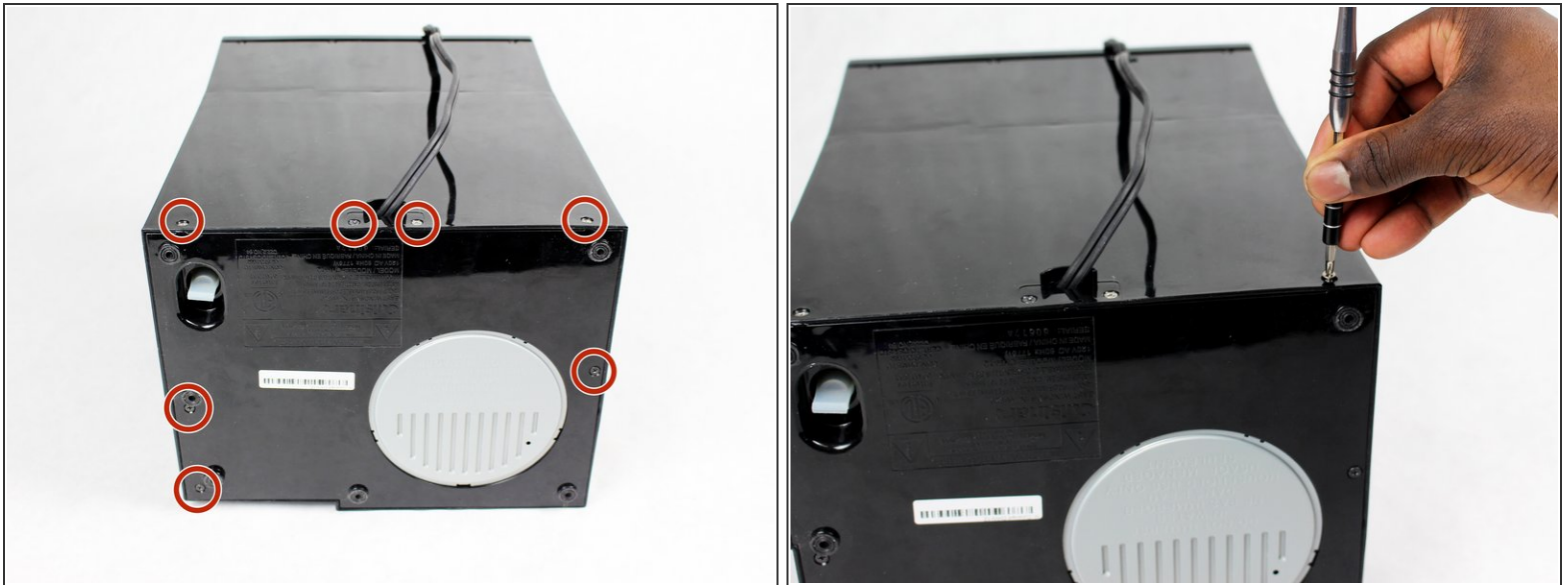
Coffee grounds may be stuck within your water hose and that could cause the damage to your coffee drinking experience. This guide will show you how to fix this problem by clearing and properly replacing the internal hoses. This exercise will require a Philips head screwdriver. Replace water hoses with High Temperature Silicone Tubing .312 ID X .472.



TOOLS:

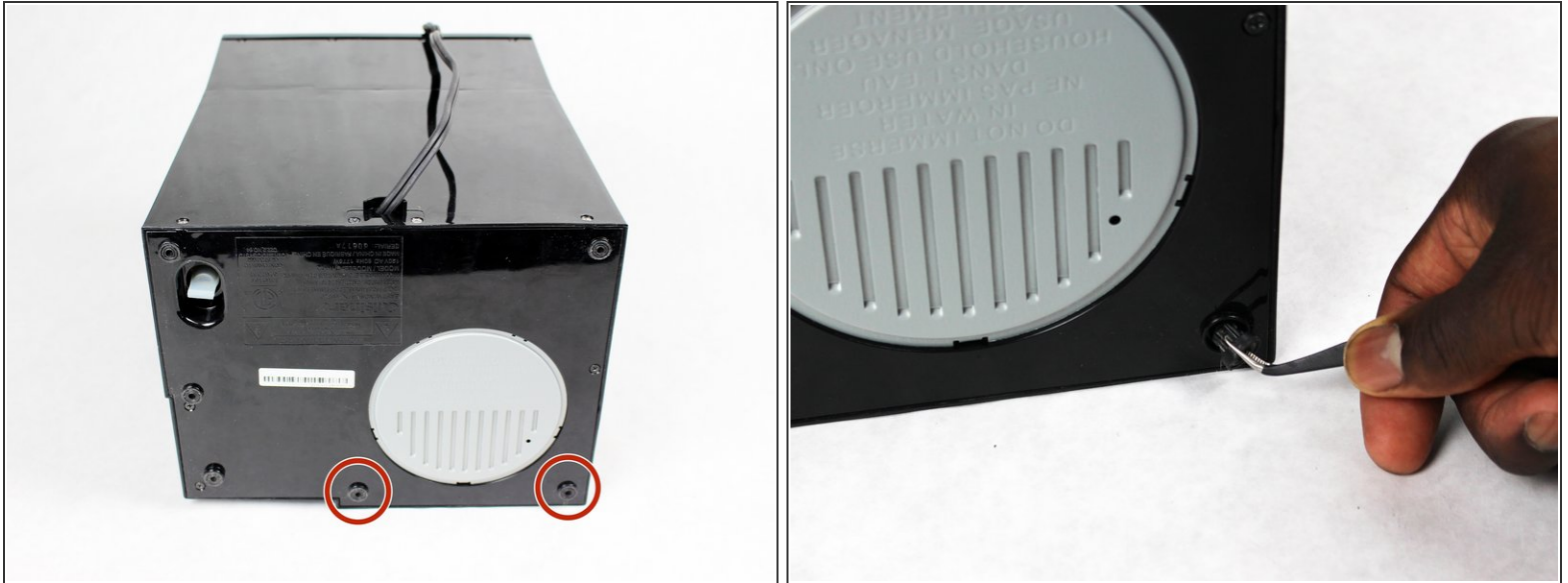
- [Phillips #1 Screwdriver](#) (1)
-

Step 1 — Water Hoses



- Unplug the Coffee-maker from the power source.
- Use a Phillips head screwdriver to remove the four 7mm screws from the back and the three 8mm screws from the bottom. This will release the bottom cover.

Step 2



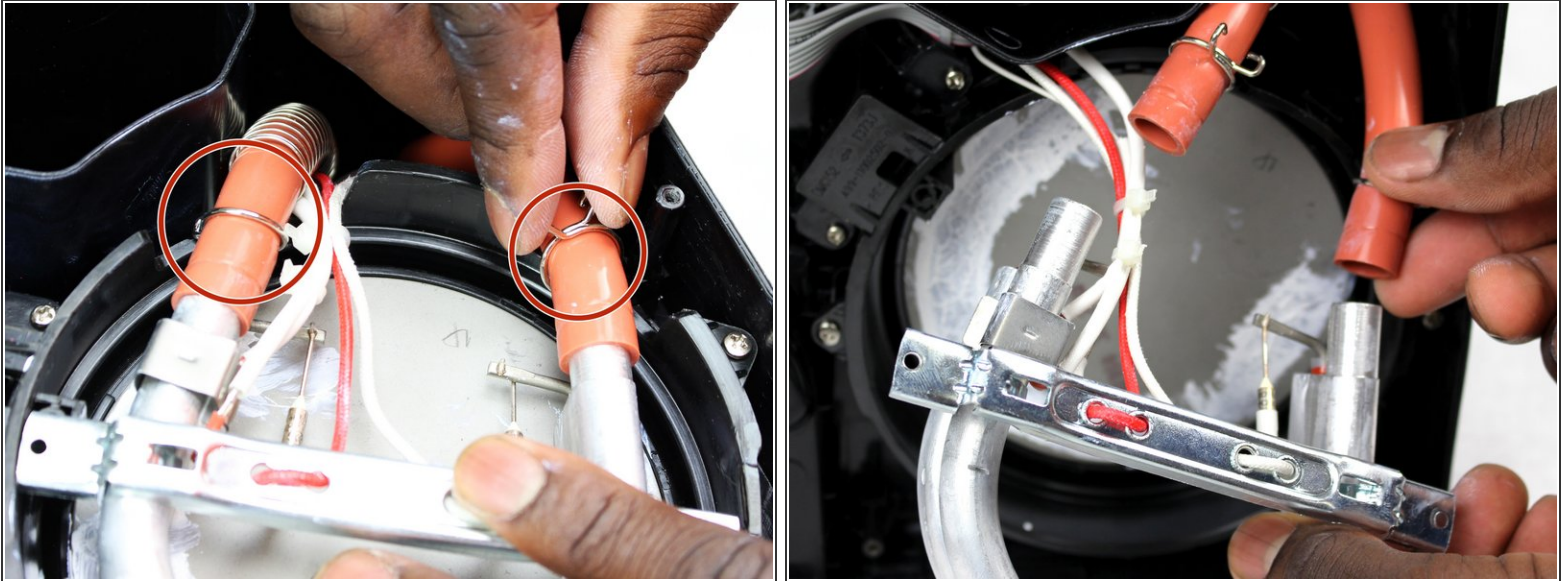
- Use tweezers to remove the two rubber feet marked within the provided pictures.
- Remove both 8mm Phillips head screws found within the holes where the feet were just removed.

Step 3



- Carefully pull the cover off the bottom of the coffee maker. This will give you access to the inside of the coffee maker.
 - Remove the two 10mm screws with a Phillips head screwdriver.
 - Position the heating coil connected to the hose for easier access to the clamps.
- ⚠ Beware of grey silicone. This paste is nontoxic to the touch but is poisonous if consumed.

Step 4



- Squeeze the two hose clamps together as you slide the clamps away from the heating element.
- After the clamped are cleared of the heating element, gently remove the hoses from the coil.

Step 5



- Squeeze the clamp on the opposite end of the hose(s) that need replacement.
- Once the clamp is free on the opposing end, gently pull the hose upwards to remove it.
- Replace the disconnected hose with a new functional hose.

To reassemble your device, follow these instructions in reverse order.

This document was generated on 2019-11-07 02:33:33 AM (MST).

