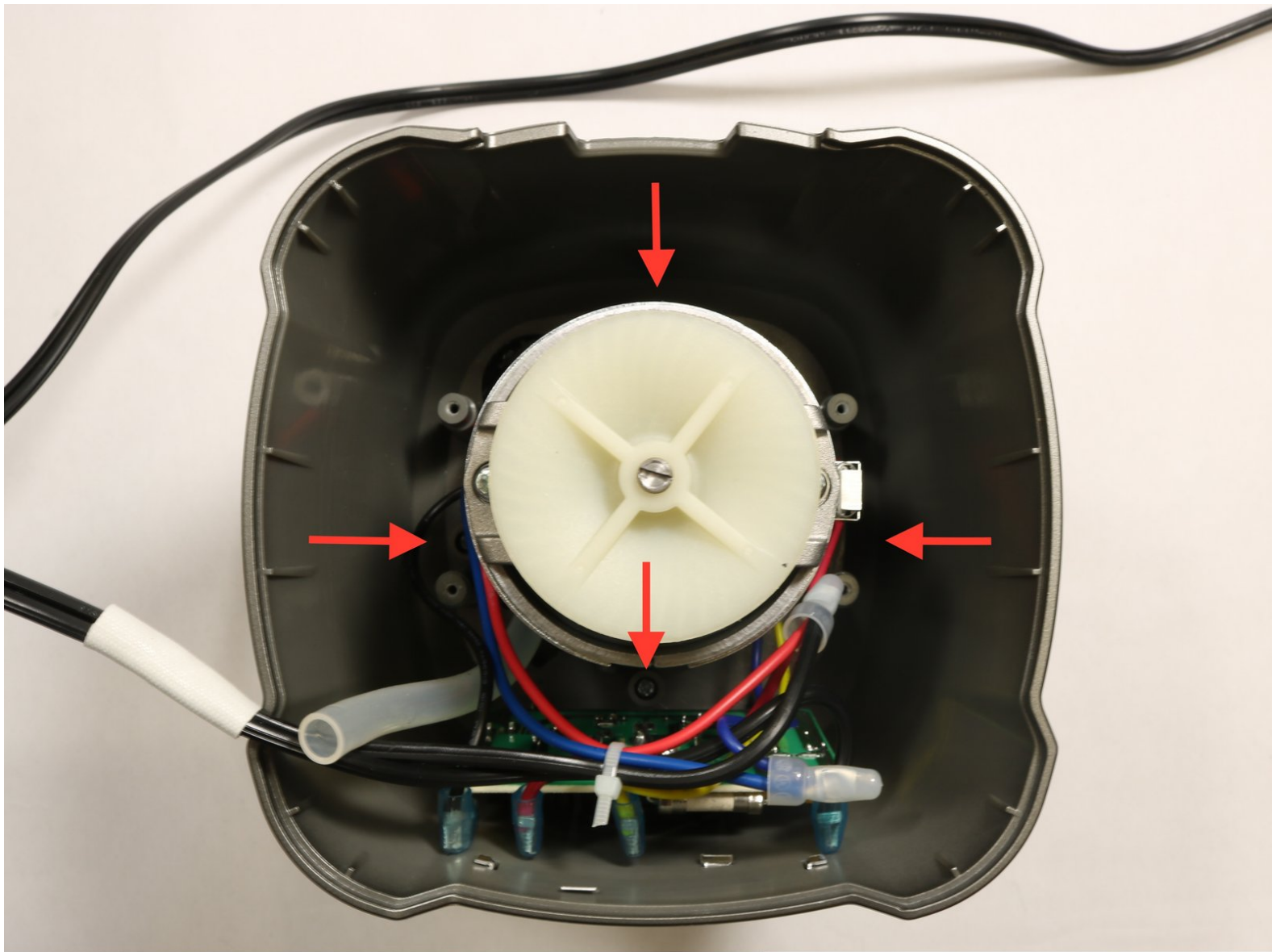




# Cuisinart CPB-380 Motor Replacement

This guide will walk users through the process of replacing the motor in the Cuisinart CPB-380.

Written By: William Hesse





## TOOLS:

- [Phillips #2 Screwdriver](#) (1)
- [Metal Spudger](#) (1)
- [Utility Scissors](#) (1)

## Step 1 — Cuisinart CPB-380 Disassembly



- Turn the device upside down.
- Remove all four rubber feet by prying them out using the metal spudger.
- Once the rubber feet have been removed, use the Phillips #2 screwdriver to remove all four 13mm screws.

## Step 2



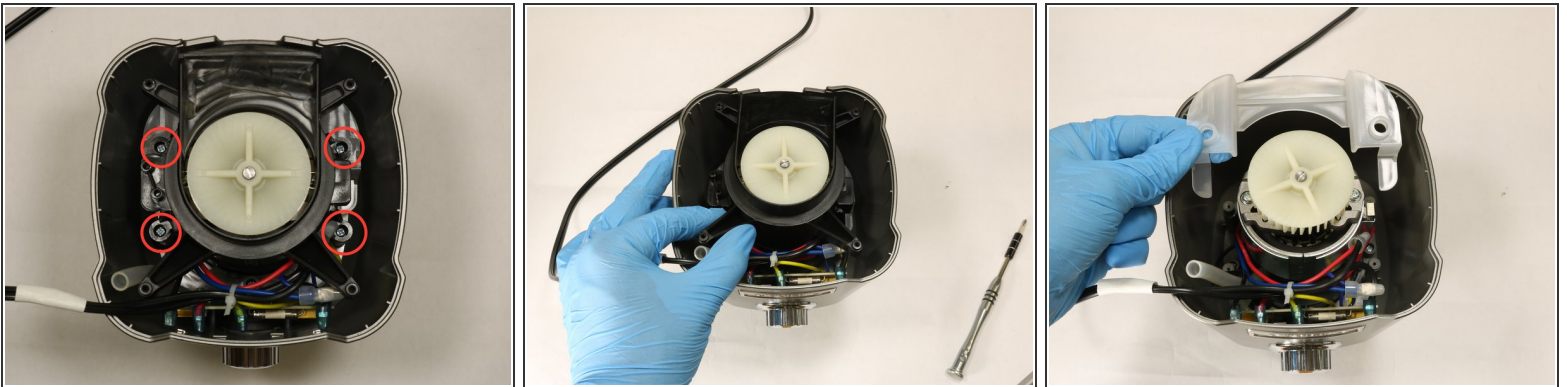
- Remove the base from the body of the blender.

### Step 3



- Remove the two 11mm screws securing the power cord using the Phillips #2 screwdriver.
- Gently move the wire aside so that it is not in the way.

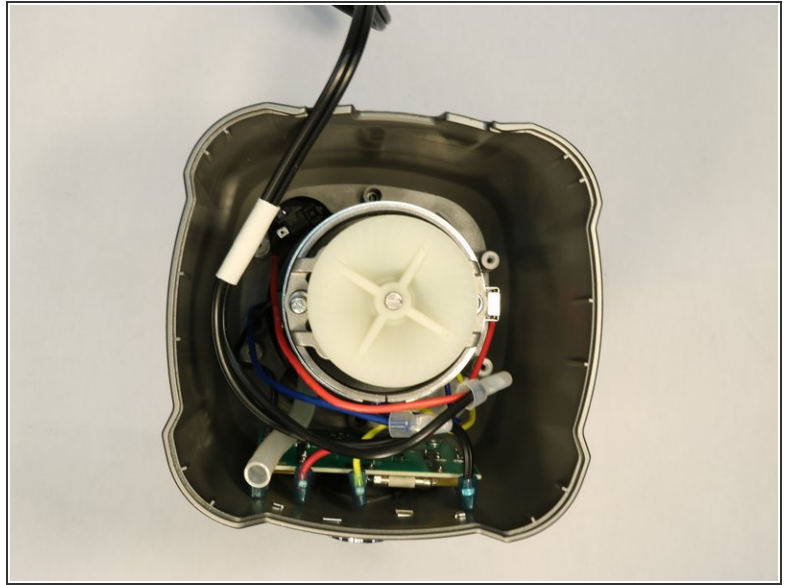
### Step 4



- Remove the four 13mm screws that hold the black plastic cover using the Phillips #2 screwdriver.
- Gently remove the black cover. Underneath you will see a clear plastic cover that should be removed as well.



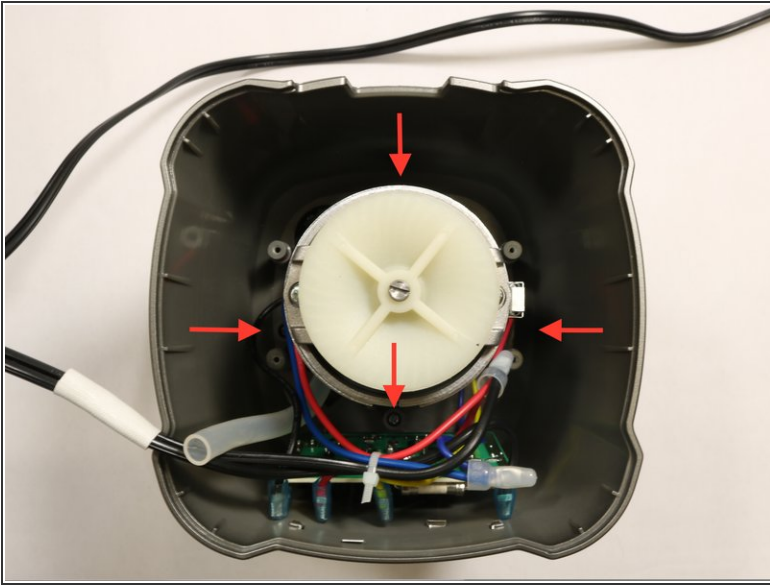
## Step 5



- Cut the zip tie that holds the black, blue, red, and yellow wires together.

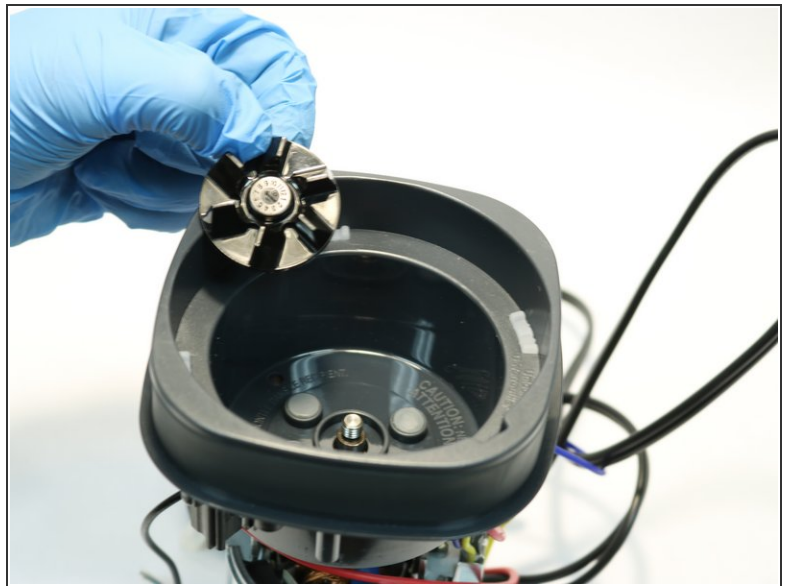
⚠ Take care not to cut the wires.

## Step 6 — Motor



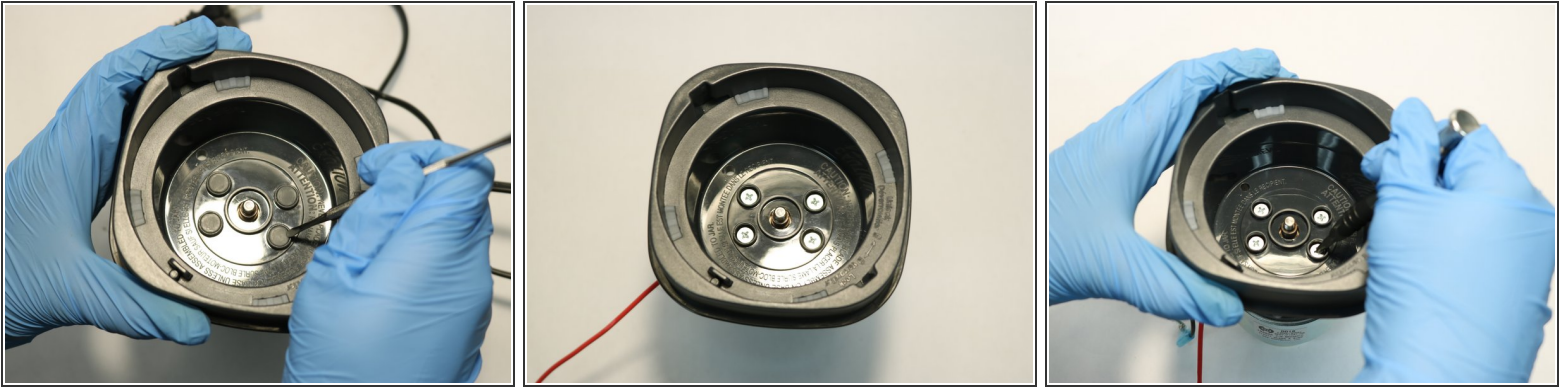
- Remove the four 13mm screws holding down the frame located at the bottom of the inverted blender using the Phillips #2 screwdriver.
- Remove frame.

## Step 7



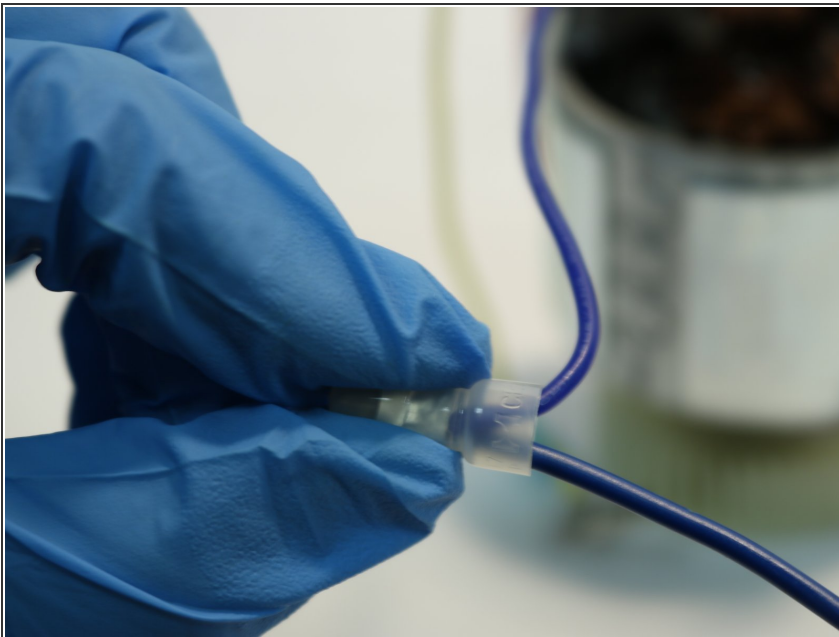
- Grab the motor by the black gear and the white filter and unscrew the black gear.

## Step 8



- With the metal spudger remove the four rubber stoppers.
- Remove the four 13mm screws with the Phillips #2 screwdriver.

## Step 9



- Separate the top from the motor.
- Pinch perpendicular to the flat surface and pull out the blue wire.

To reassemble your device, follow these instructions in reverse order.