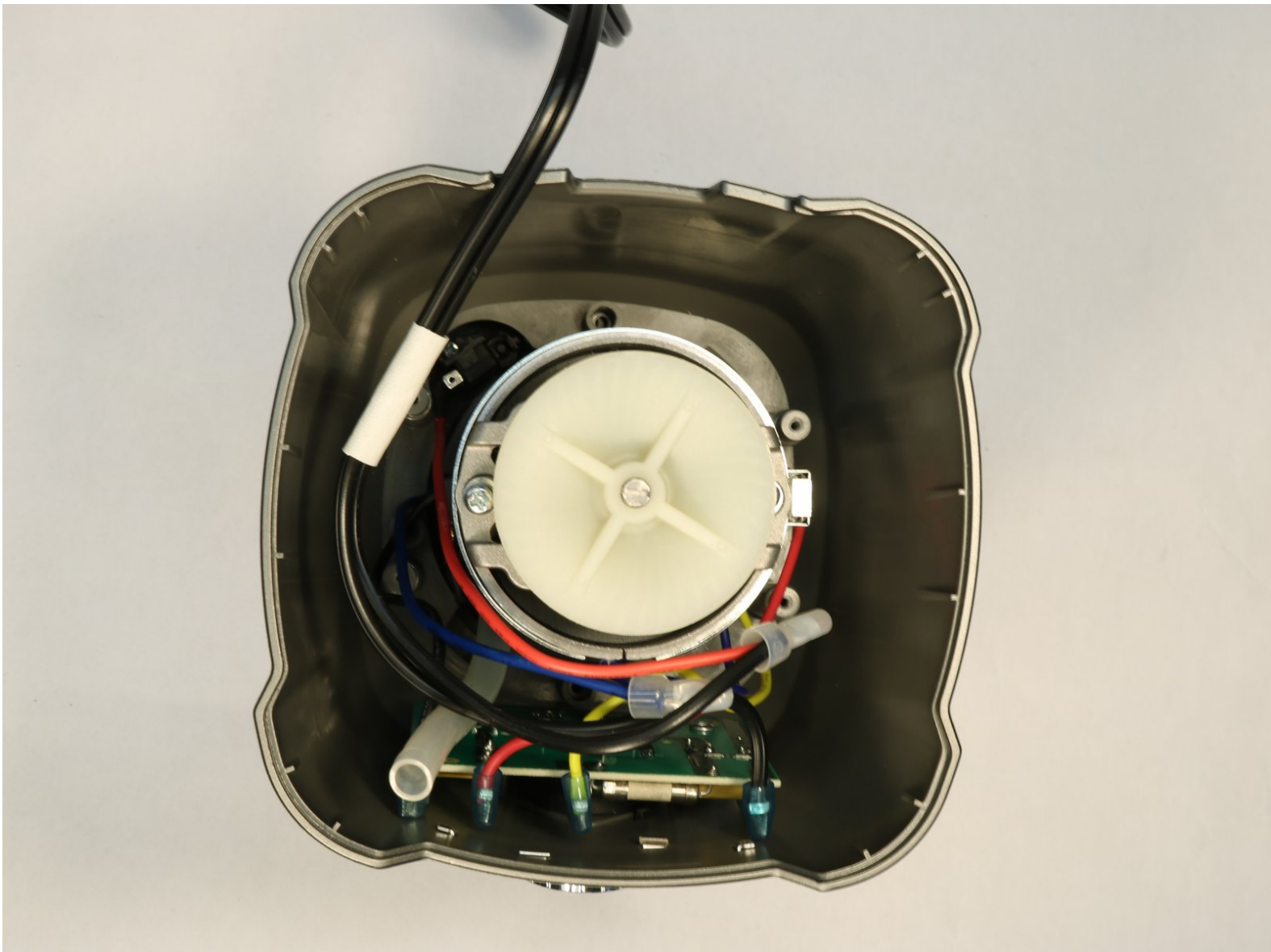




Cuisinart CPB-380 Power Cord Replacement

This guide will walk users through the process of replacing the Cuisinart CPB-380 power cord.

Written By: Mary Harold





TOOLS:

- [Phillips #2 Screwdriver](#) (1)
- [Utility Scissors](#) (1)
- [Metal Spudger](#) (1)

Step 1 — Cuisinart CPB-380 Disassembly



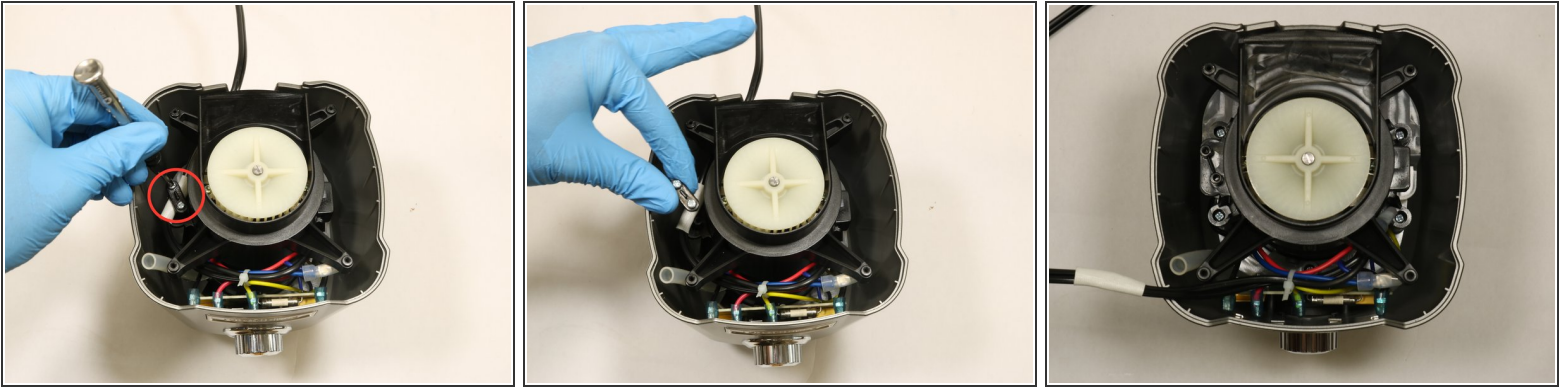
- Turn the device upside down.
- Remove all four rubber feet by prying them out using the metal spudger.
- Once the rubber feet have been removed, use the Phillips #2 screwdriver to remove all four 13mm screws.

Step 2



- Remove the base from the body of the blender.

Step 3



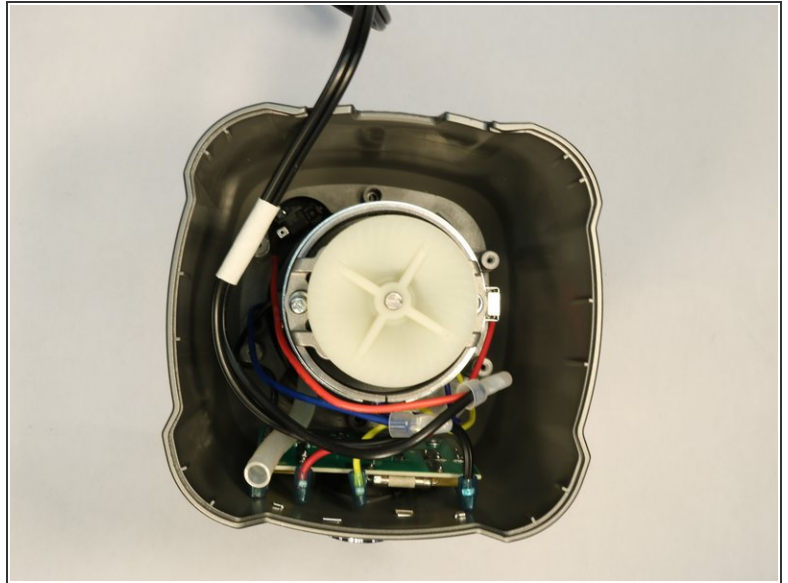
- Remove the two 11mm screws securing the power cord using the Phillips #2 screwdriver.
- Gently move the wire aside so that it is not in the way.

Step 4



- Remove the four 13mm screws that hold the black plastic cover using the Phillips #2 screwdriver.
- Gently remove the black cover. Underneath you will see a clear plastic cover that should be removed as well.

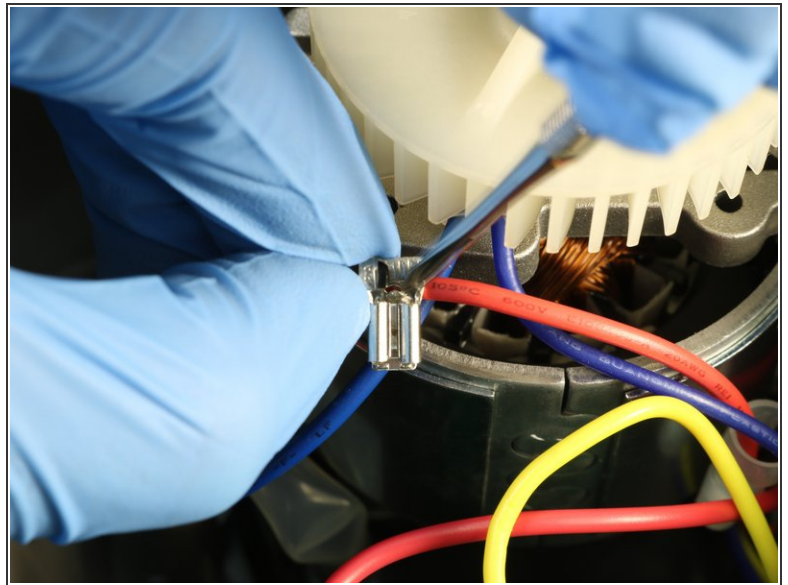
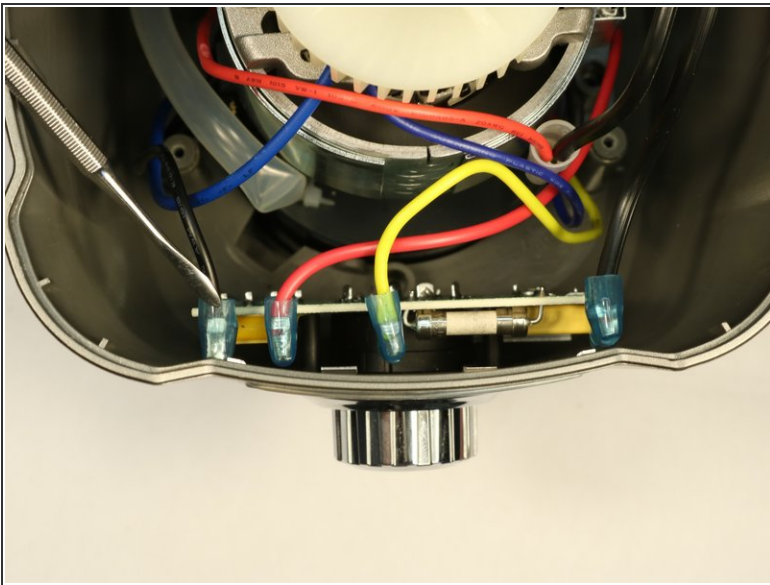
Step 5



- Cut the zip tie that holds the black, blue, red, and yellow wires together.

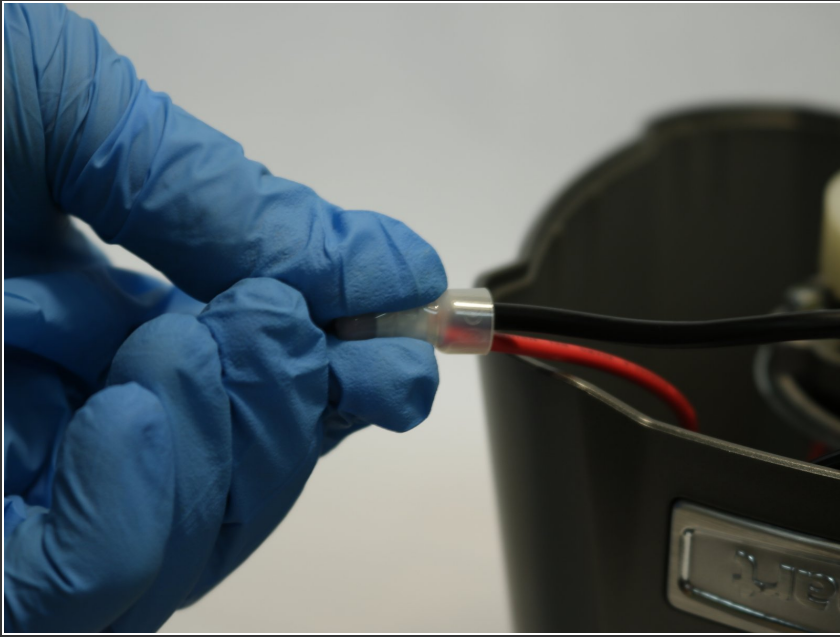
⚠ Take care not to cut the wires.

Step 6 — Power Cord



- Remove the 2 black, yellow, and red wires from circuit board by push down on the tab to release and then pull up.

Step 7



- Pinch perpendicular to the flat surface and pull out the black wire.

To reassemble your device, follow these instructions in reverse order.