



Cuisinart CPT-140BK Top Cover Replacement

This guide will explain how to replace outer case of Cuisinart CPT-140BK model.

Written By: Liya Zulfiquar



INTRODUCTION

Did you drop the toaster and broke the cover? This guide will explain how to replace outer case of Cuisinart CPT-140BK toaster. This guide can also be used to get to other components inside the toaster.

TOOLS:

- [Phillips #2 Screwdriver](#) (1)
-

Step 1 — Top Cover



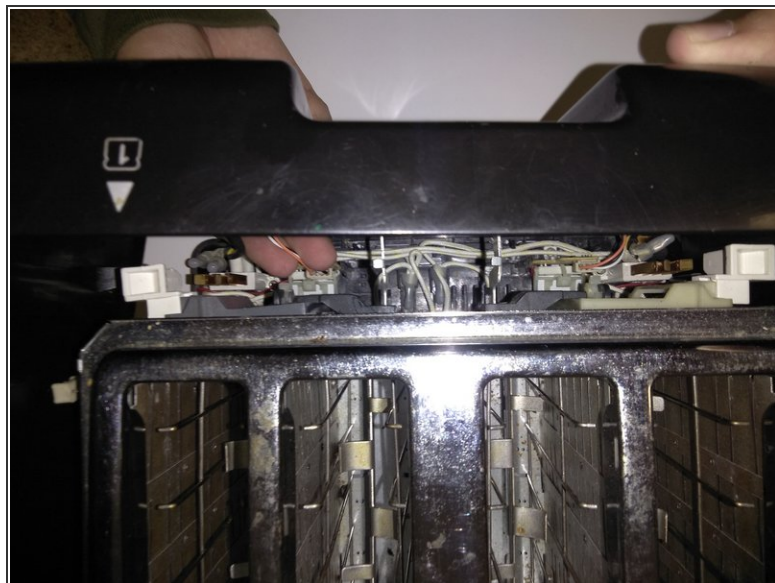
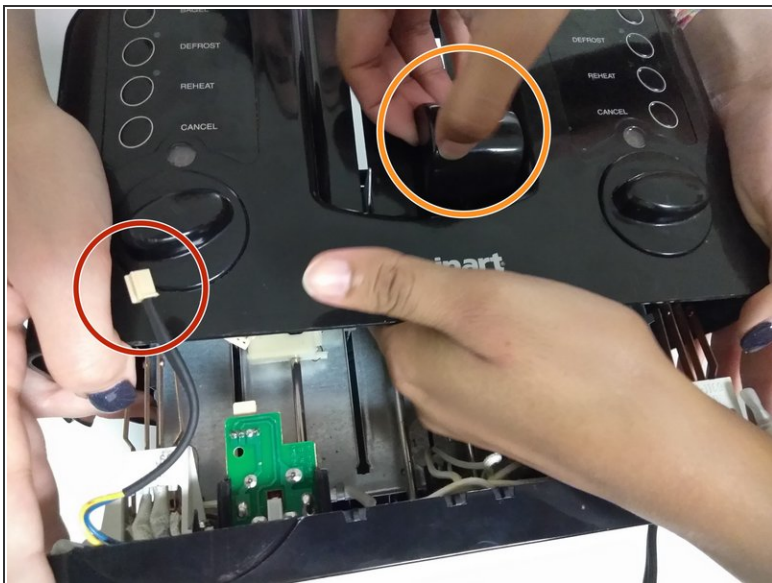
i Unplug the toaster before disassembly.

Step 2



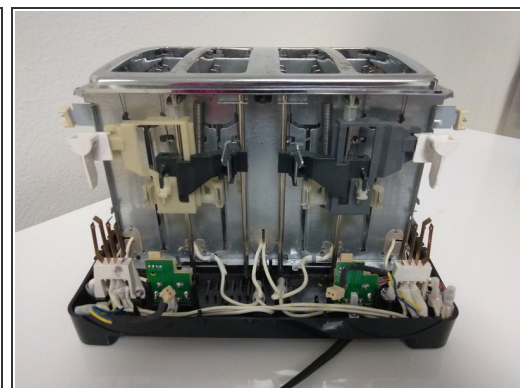
- Flip the toaster over so the bottom is facing up.
- Unscrew all 4mm screws in the base using Phillips #2 screwdriver.

Step 3



- Take off the lever knobs by pulling it away from the toaster.
- Disconnect the cables that connects the toaster to the circuit board in both panels.

Step 4



- Place the toaster right side up.
- Carefully lift up the top cover from the interior of the toaster.

To reassemble your device, follow these instructions in reverse order.