



Cuisinart DCC-1100 Display Replacement

A guide on how to replace the display on a Cuisinart DCC-1100 coffee maker.

Written By: Josh Harvey



INTRODUCTION

This guide will show you how to replace the display and will require soldering.



TOOLS:

- [Phillips #1 Screwdriver](#) (1)
 - [Phillips #0 Screwdriver](#) (1)
 - [Soldering Iron](#) (1)
-

Step 1 — Display



- Unplug the coffee maker and remove the pot.

Step 2



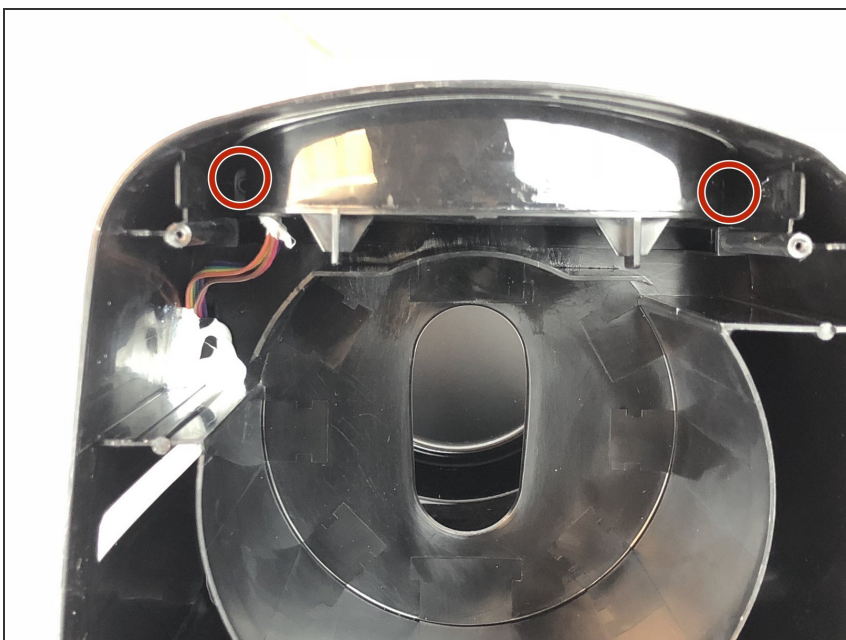
- Open the lid of the coffee pot.
- Remove the two 1.6mm Phillips #1 screws from inside of the lid.

Step 3



- Remove the lid.

Step 4



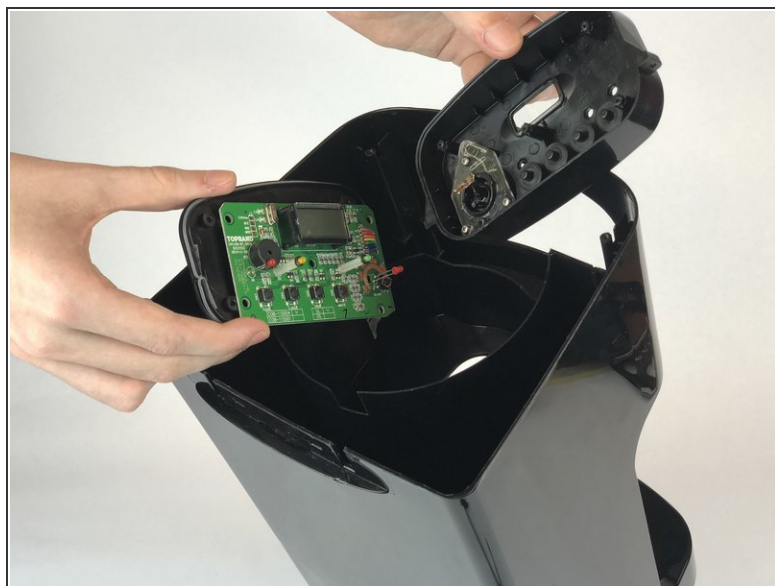
- Remove the two 1.3mm Phillips #0 screws from the display.

Step 5



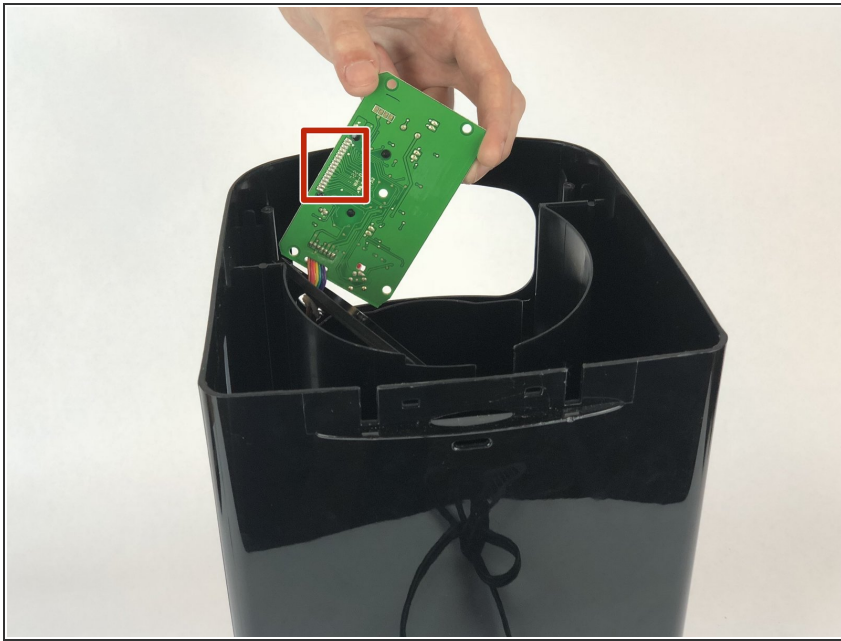
- Slide the display into the coffee maker so that way you can access the screws in the back.
- Remove the four 1mm Phillips #0 screws from the back of the display.

Step 6



- Remove the back panel from the display.
- Remove the 1mm Phillips #0 screw from the motherboard.

Step 7



- Desolder the display from the motherboard.

To reassemble your device, follow these instructions in reverse order.