



# Cuisinart DFP-14BCN Power Cord Replacement

Replace the faulty power cord on your device to get your food processor's blades spinning again.

Written By: Vanessa See



---

## INTRODUCTION

If your power cord has any exposed wires, replacing the cord may help your device run again. To replace your power cord, you will need to cut wires and use a soldering iron. Check out this [soldering guide](#) for instructions.



### TOOLS:

- [Phillips #2 Screwdriver](#) (1)
  - [Portable Soldering Iron](#) (1)
  - [Flush Wire Cutters](#) (1)
  - [Large Needle Nose Pliers](#) (1)
-

## Step 1 — Bowl



**i** Unplug your food processor before starting any disassembly.

- Remove the small pusher by rotating it clockwise and lifting up.

## Step 2



- Remove the large pusher by grabbing its sides and pulling up.

**i** There may be a clicking sound from the safety feature being disengaged in this step.

## Step 3




- Remove the lid from the bowl by turning it clockwise and lifting.

## Step 4



- Take out the blades by grabbing the plastic center piece and lifting up.

 Avoid contact with blades as they are extremely sharp.

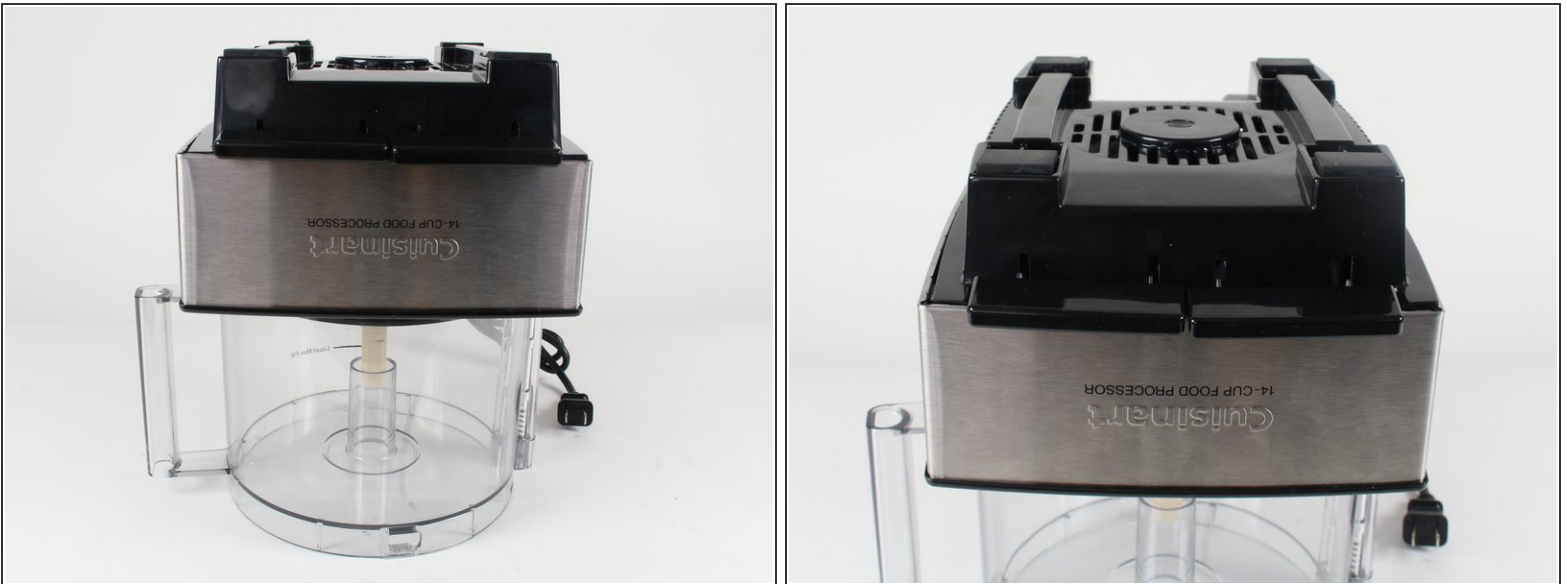


## Step 5



- Position the handle of the bowl so that it is on your left.
- Grab the handle and push clockwise. Lift up the bowl to remove it.

## Step 6 — Back Casing



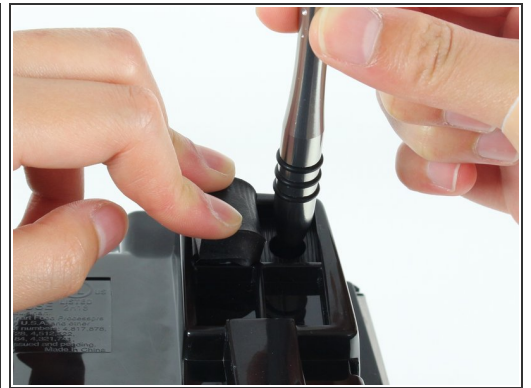
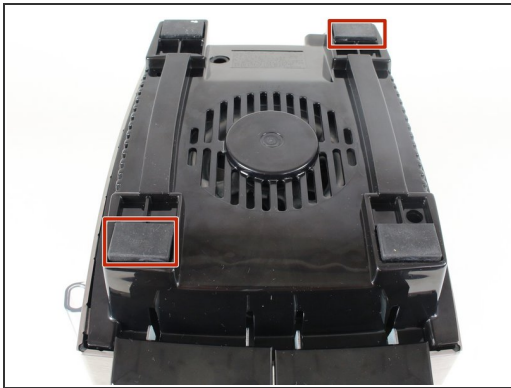
- Turn the food processor's base upside down by lifting it up and turning it over.
- Position the base so that the on and pulse buttons are facing you.
- Place the base on top of the food processor's bowl to keep the base from wobbling while you work on it.

## Step 7



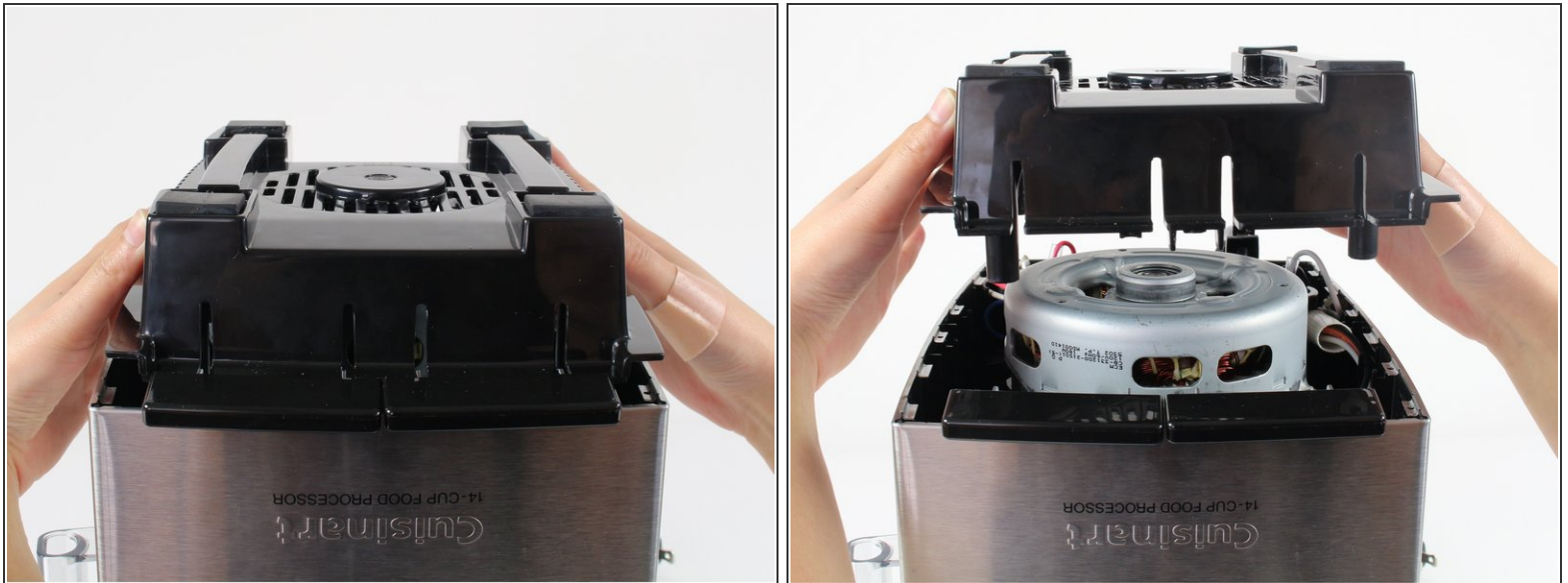
- Remove the two 13.0mm screws that hold down the casing with a Phillips #2 screwdriver.

## Step 8



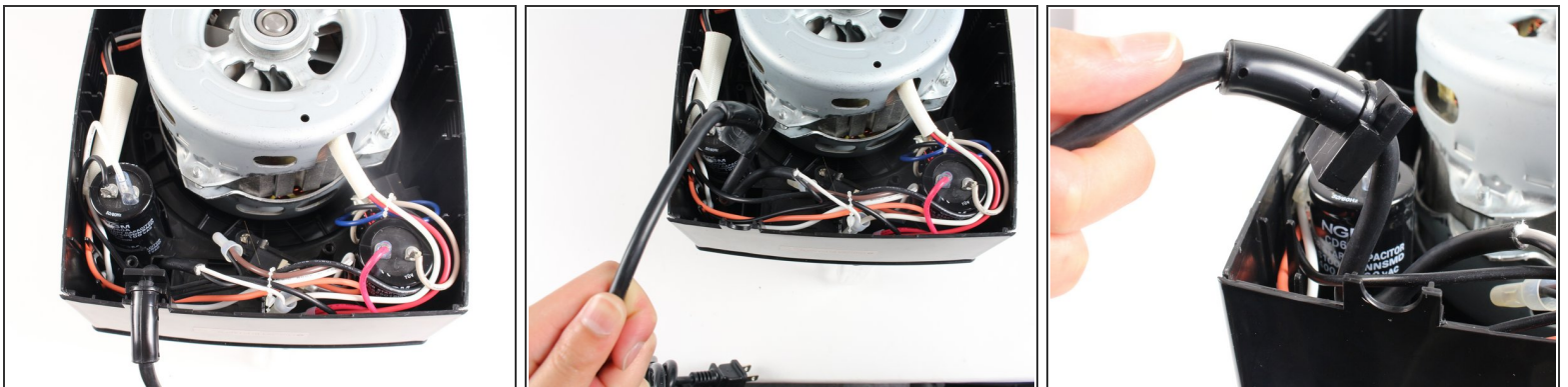
- Lift up the front left and the back right rubber feet by pulling back the rubber with your fingers.
- Remove the 13.0mm screw under each rubber foot with a Phillips #2 screwdriver.

## Step 9



- Lift off the back casing by raising it upward.

## Step 10 — Power Cord



- Unlatch the power cord from its casing at the bottom left corner of the base by lifting the cord upward.



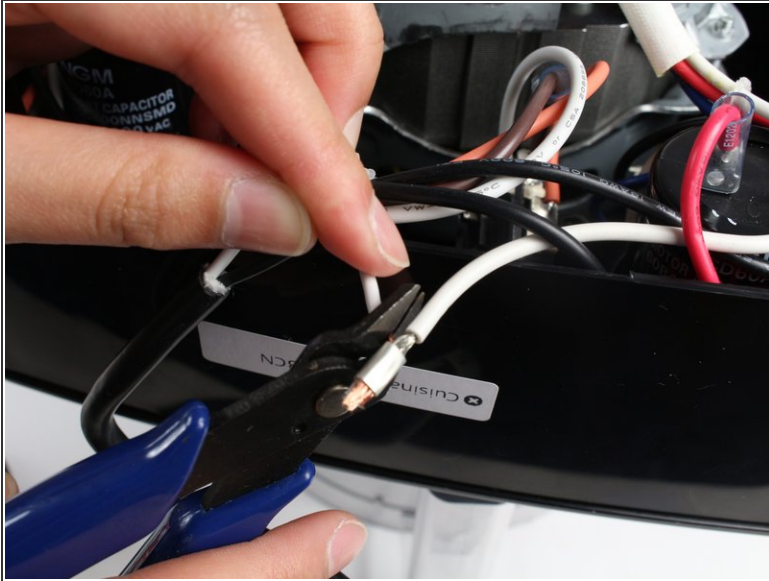
## Step 11



- Use flat pliers to clamp down on the wide part of the plastic covering located at the power cord's white wire connection.
- Pull the plastic cover off of the wire by keeping the pliers clamped down and pulling away from the wires.
- ⓘ This may require some force.
- Repeat for the power cord's brown wire connection.



## Step 12



- Use wire cutters to cut the exposed wire on the power cord's white wire. To cut the wire, position the blades of the wire cutter over the exposed wire and clamp down.
  - Repeat for the power cord's brown wire connection. This cuts off the connection between the power cord and motor.
  - Pull the power cord out. It is no longer attached to the device.
- ☒ For reassembly, the wires will need to be soldered together. Check out this [soldering guide](#) for instructions.

To reassemble your device, follow these instructions in reverse order.