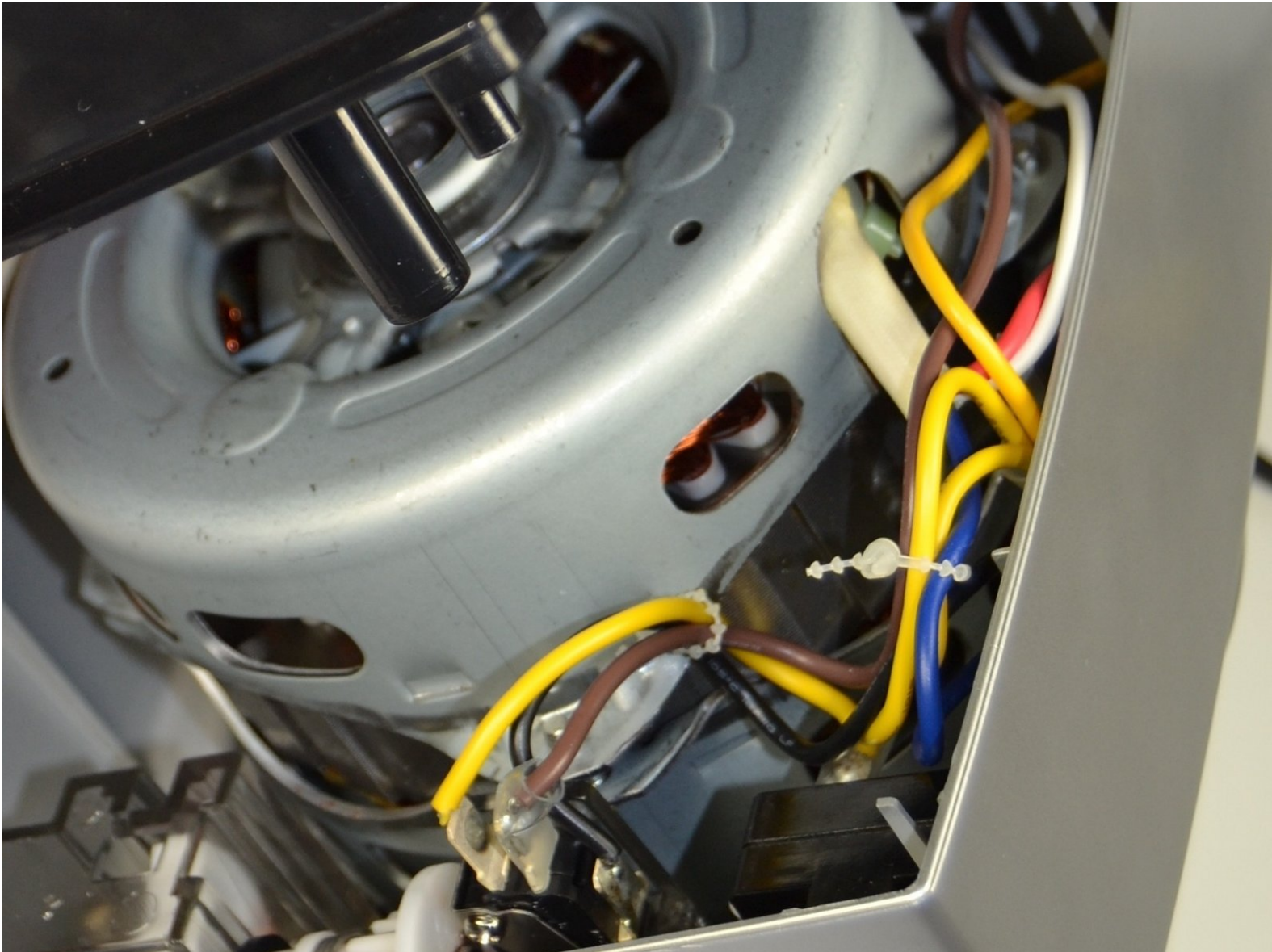




Cuisinart DLC-10S Pro Classic 7-Cup Food Processor Internal Wiring Replacement

This guide will help you accomplish replacing faulty wires within your device.

Written By: Riley Carns

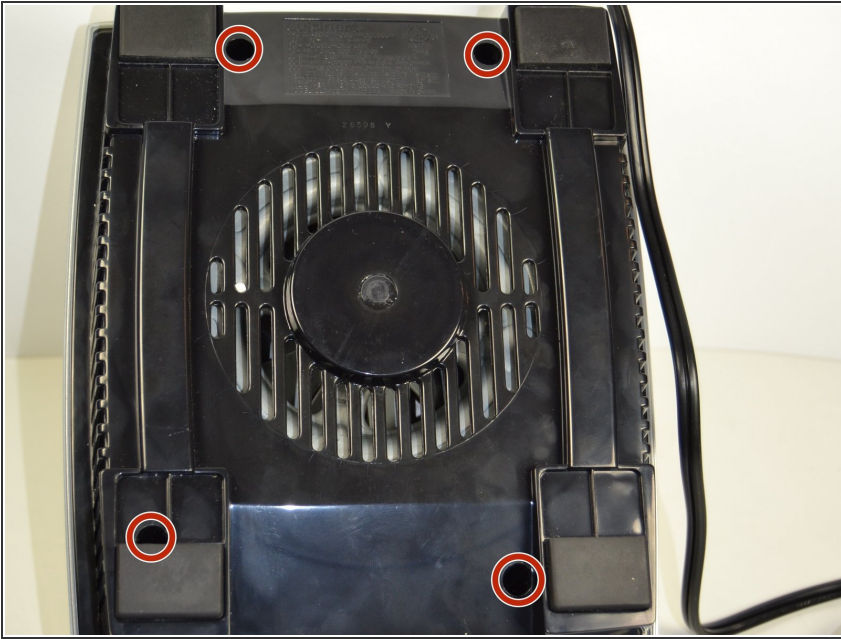




TOOLS:

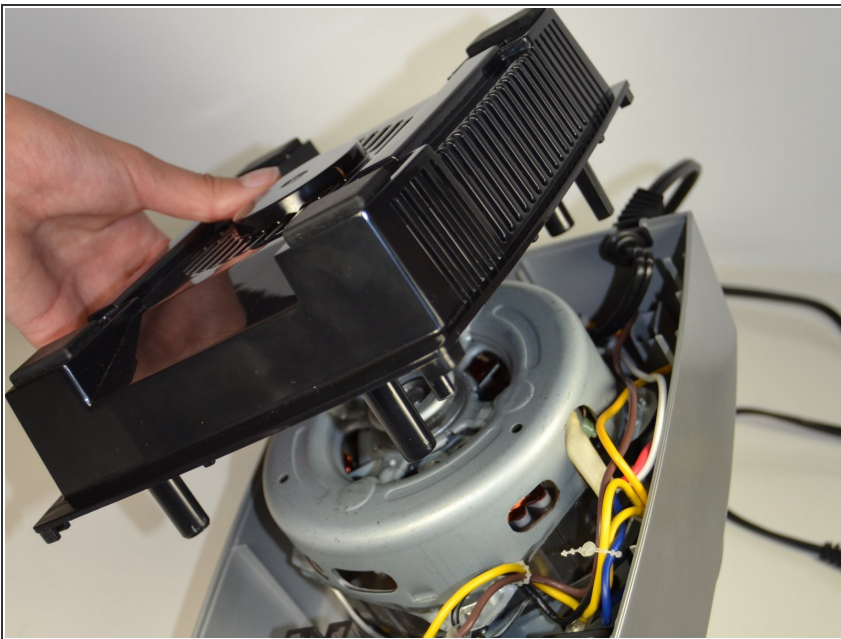
- [Wire stripper/crimping tool](#) (1)
- [Phillips #2 Screwdriver](#) (1)
- [Flush Wire Cutters](#) (1)

Step 1 — Internal Wiring



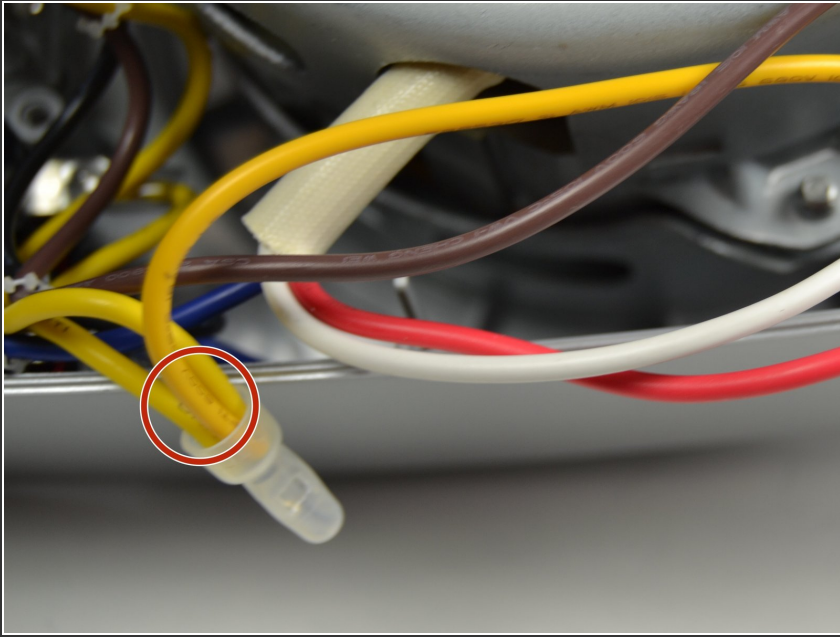
- Remove the four screws from the bottom of the processor with a Philips Screwdriver.

Step 2



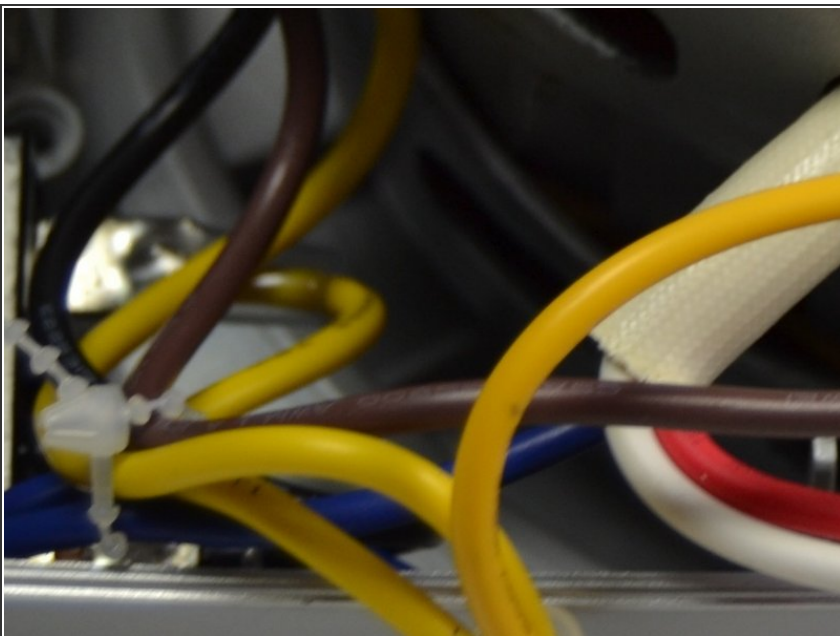
- Remove the bottom casing of the processor.

Step 3



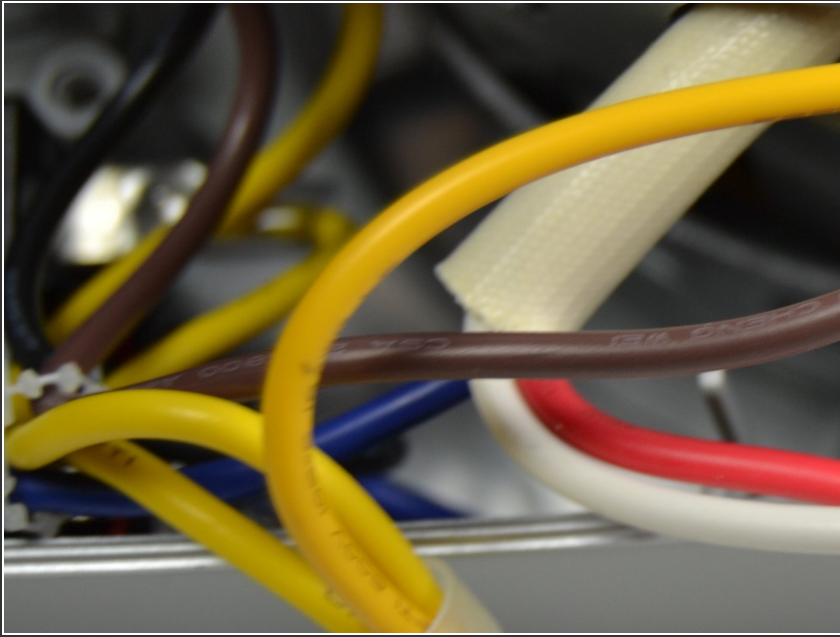
- If any wires are frayed, cut them off where they are connected by wire nuts.

Step 4



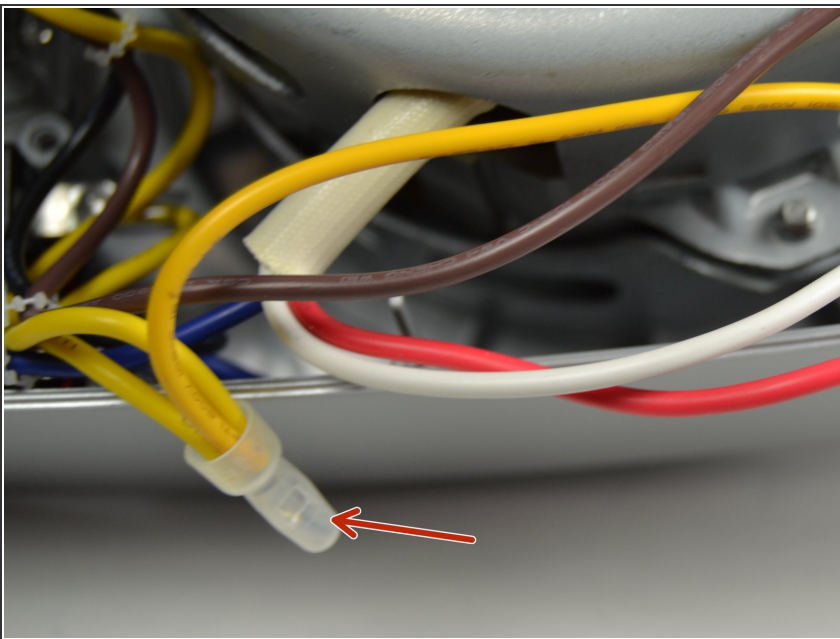
- Detach the wire nut from the other connected wires.

Step 5



- Replace the bad wire with a new one of the same gauge.

Step 6



- Strip the new wire to the same length as the other wires and connect them to a wire nut.

To reassemble your device, follow these instructions in reverse order.