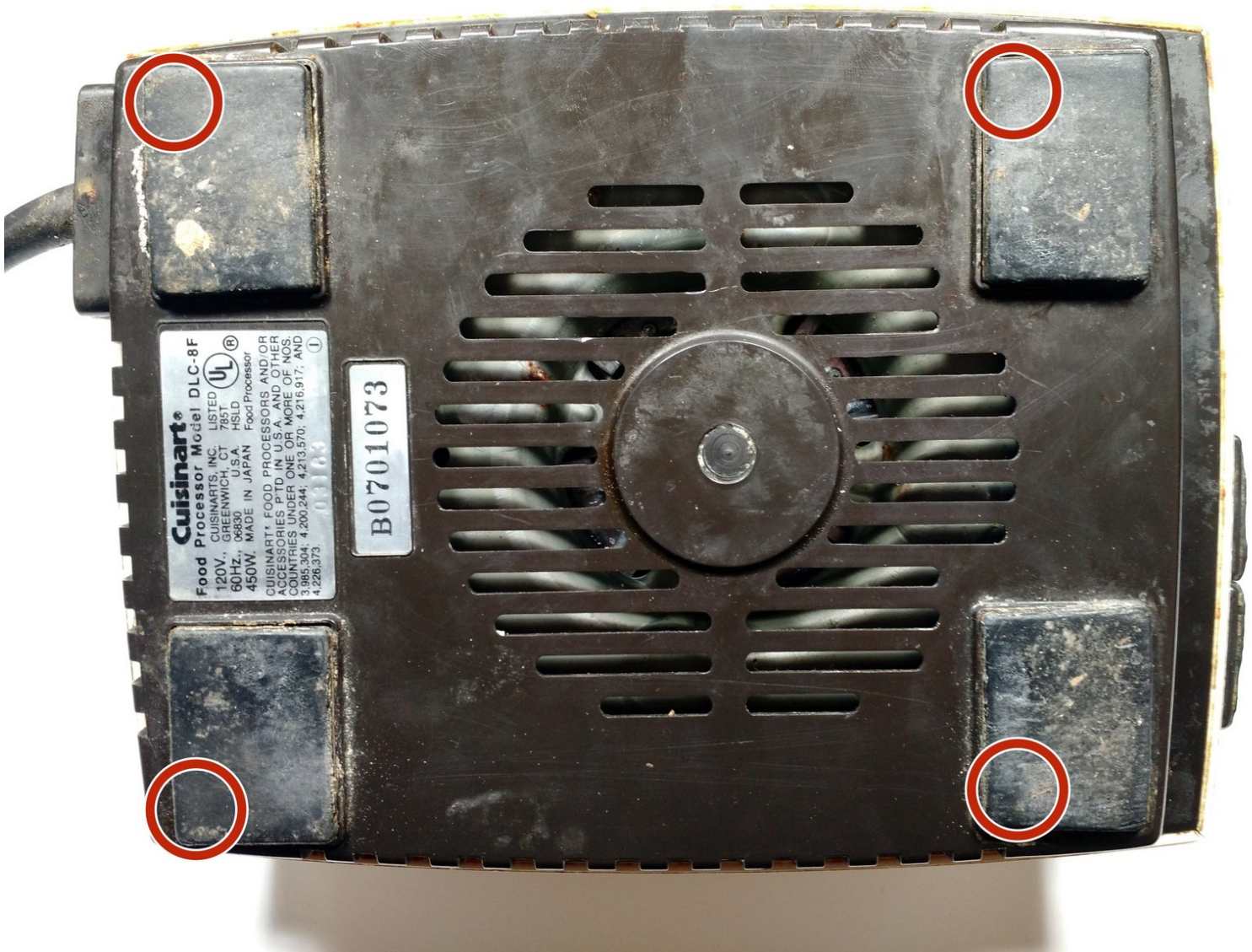




Cuisinart DLC-8F Power Cable Replacement

Use this guide to replace the power cable on your Cuisinart DLC-8F.

Written By: David Colman



Cuisinart®
Food Processor Model DLC-8F
CUISINARTS, INC. LISTED
120V, GREENWICH, CT 06830
60Hz, J.S.A. 78519
450W, MADE IN JAPAN Food Processor
Cuisinart® Food Processors and/or
Accessories PTD in U.S. and other
countries under one or more of nos.
3,985,304; 4,200,244; 4,213,570; 4,216,917; and
4,226,373. ①

B0701073

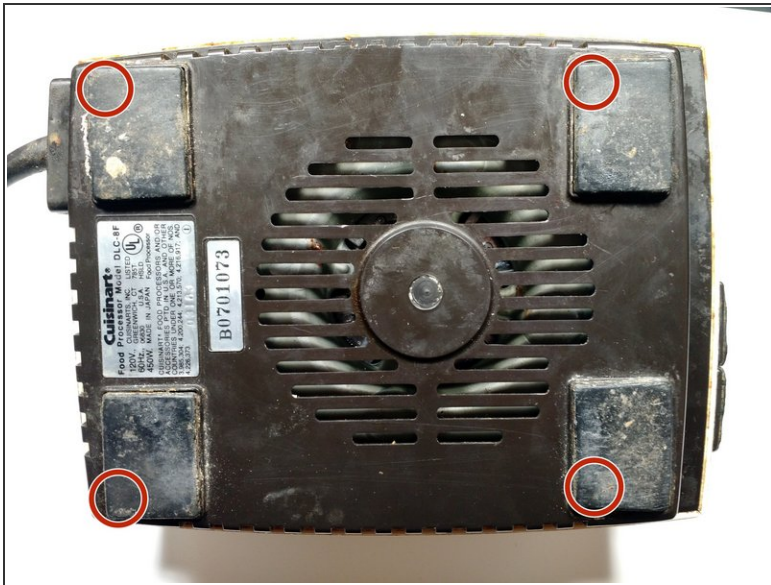
INTRODUCTION

This guide teaches the user how to replace the power cable in your Cuisinart DLC-8F. The removal of the power cable first requires the removal of the bottom hood and all of this can be done with just a Phillips #2 screwdriver. This is an easy process and should only take about 10 minutes.

TOOLS:

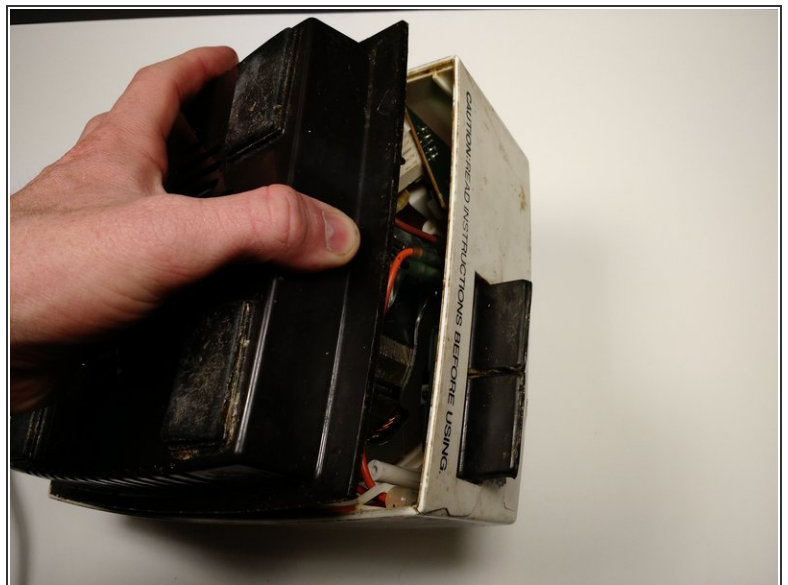
- [Phillips #2 Screwdriver](#) (1)
-

Step 1 — Power Cable



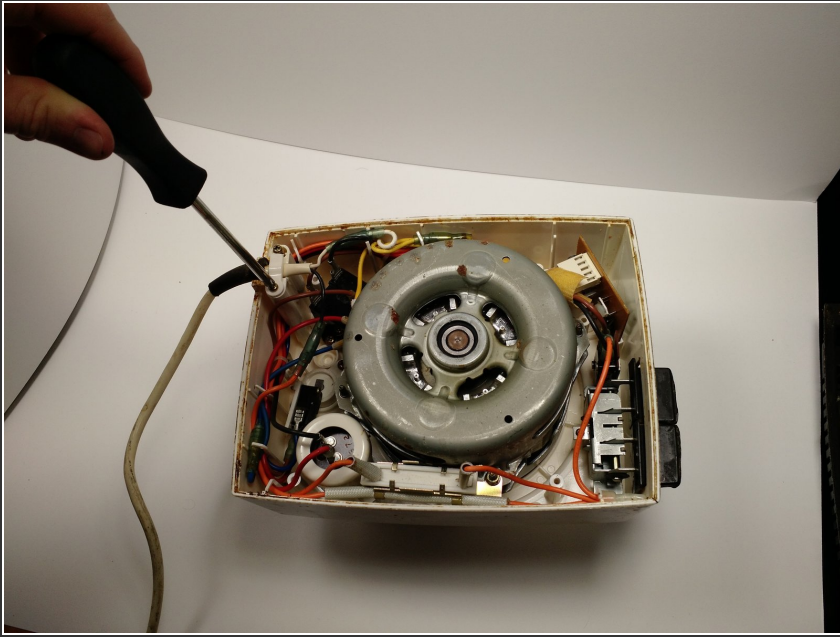
- Remove the four 18 mm Phillips #2 screws from the bottom by prying up the rubber feet to access the screw hole.

Step 2



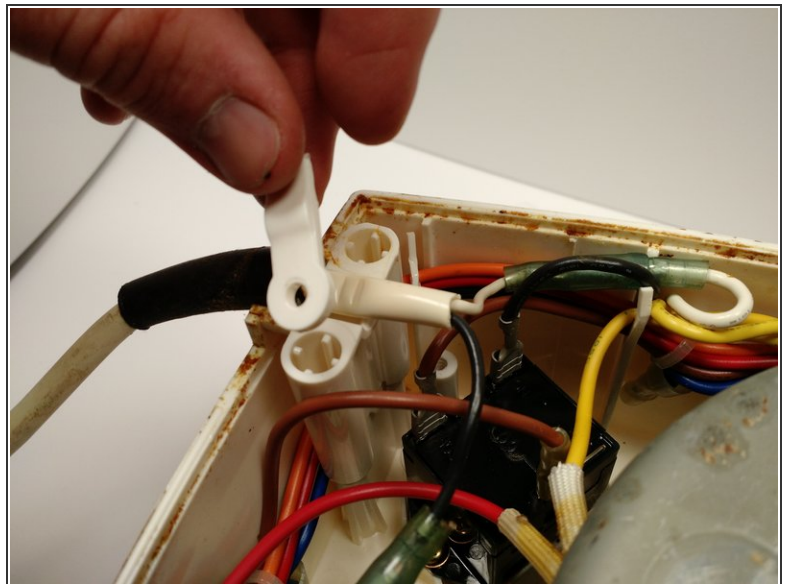
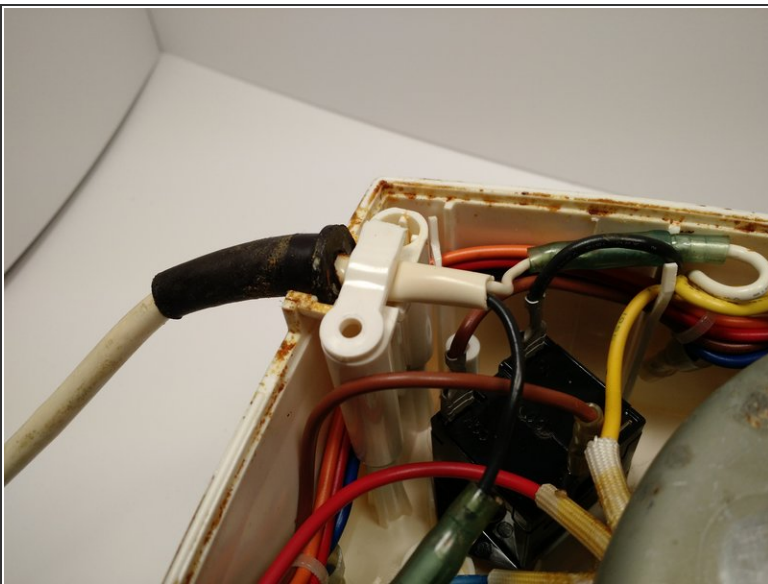
- Gently lift the bottom cover from the main body.

Step 3



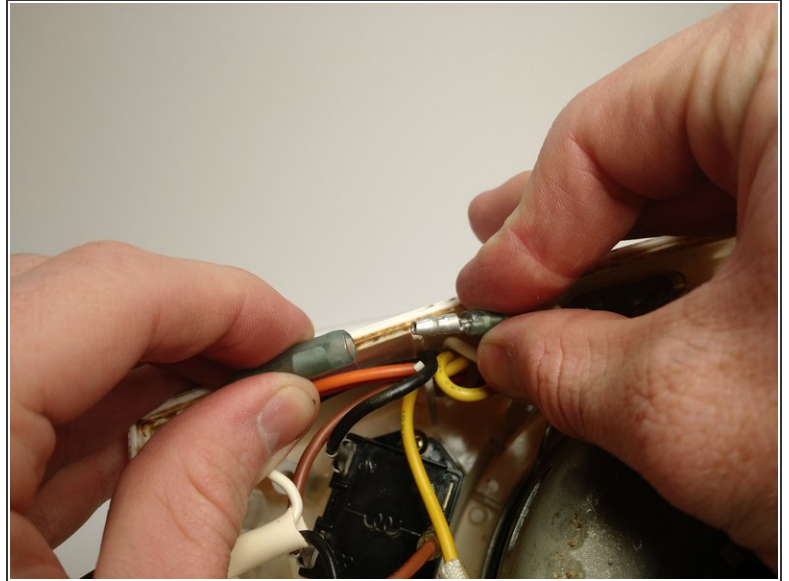
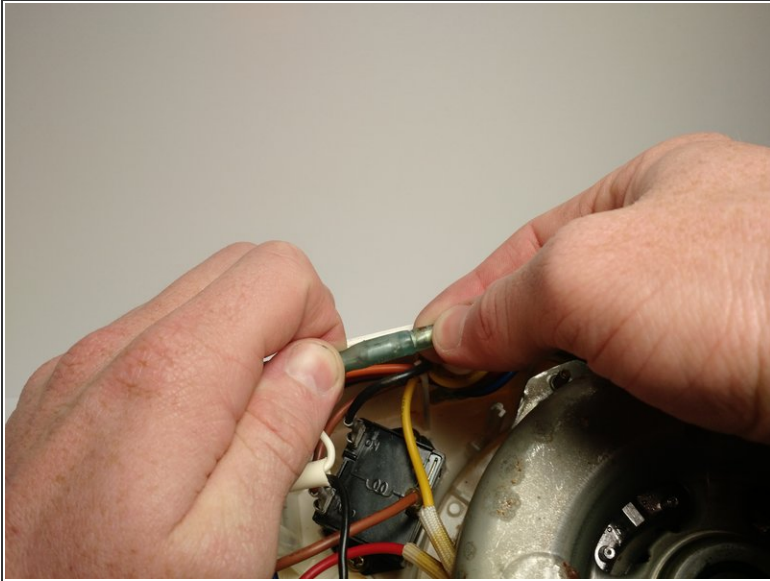
- Remove the two 62 mm Phillips #2 screws from the cable retaining clip.

Step 4



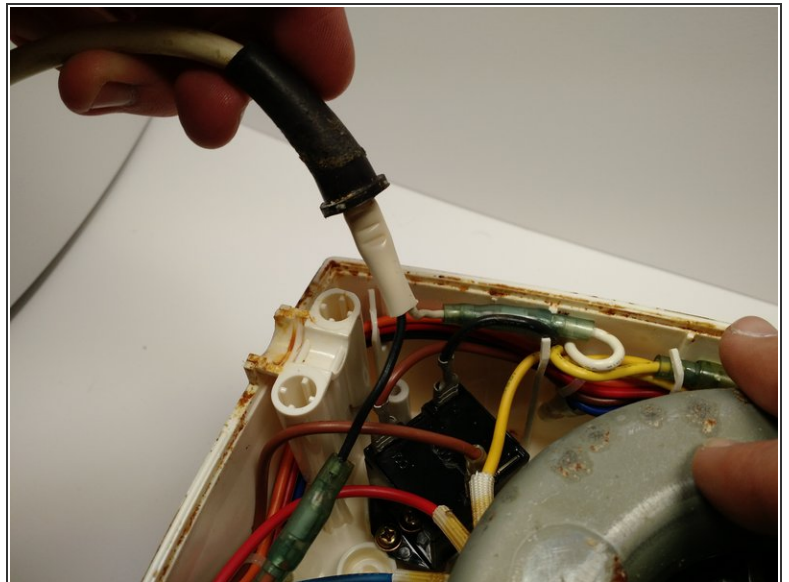
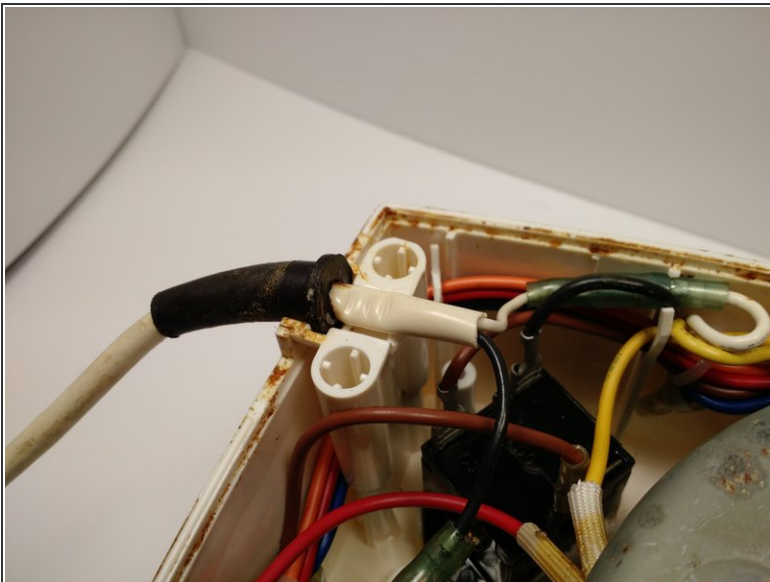
- Lift off the cable retaining

Step 5



- Pull apart the two wires of the power cable at their connections as shown.

Step 6



- Lift out the cable.

To reassemble your device, follow these instructions in reverse order.