



# Cyber-Shot DSC-H55 Outer Shell Replacement

This guide will demonstrate how to successfully replace the camera's Outer Shell.

Written By: Jazmin Young



---

## INTRODUCTION

This guide will show you how to remove all the necessary pieces in order to reach and disconnect the Outer Shell and replace it.

---

### TOOLS:

- [Phillips #00 Screwdriver](#) (1)
  - [iFixit Opening Tools](#) (1)
-

## Step 1 — Removing Screws



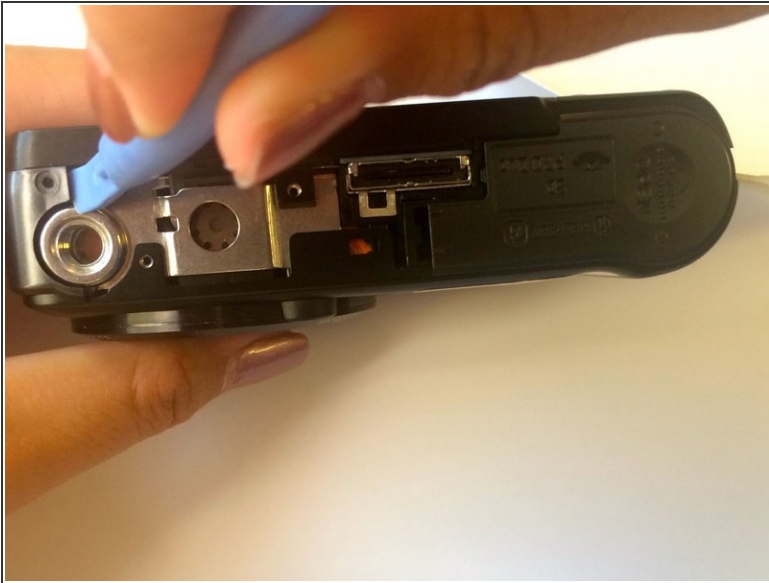
- Use the Phillips #00 screwdriver to remove the two screws located on the right side of the camera.

## Step 2 — Removing Bottom Piece



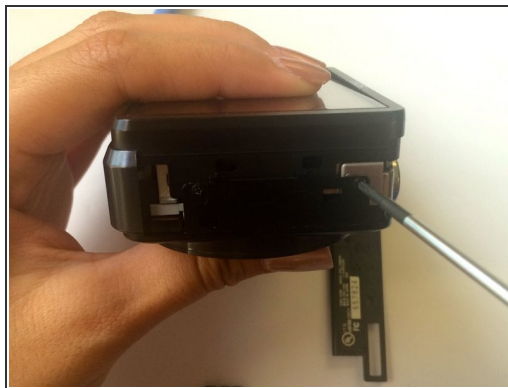
- Use the Phillips #00 screwdriver to remove the three screws on the bottom of the camera.
- Use the plastic opening tool to lift the cover containing the patent information off.

### Step 3 — Removing Left Side Piece



- Place the plastic opening tool in the crack between the metal circle and the black piece on the left.
- Slide the black cover and lift to remove.

### Step 4 — Removing Newly Exposed Screws



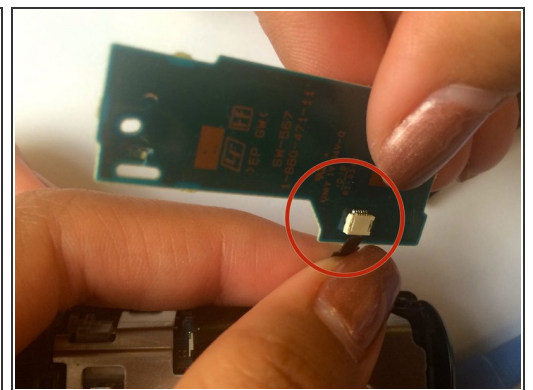
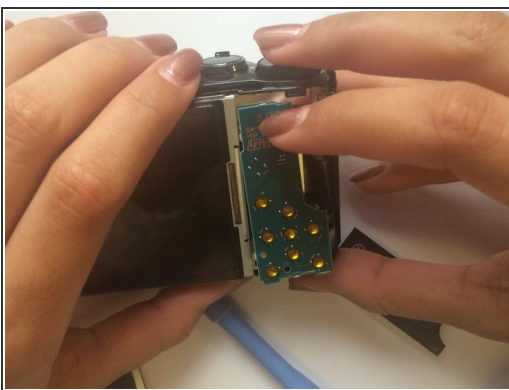
- The first picture shows how the left side of the camera looks once we remove the side piece.
- Use the Phillips #00 screwdriver to remove the two screws on this left side.
- Flip your camera to the right side where we removed the first two screws.
- Use the plastic opening tool into the crack and lift in order to loosen that side of the shell. Loosening one side makes removing the entire shell easier.

## Step 5 — Removing Back Shell



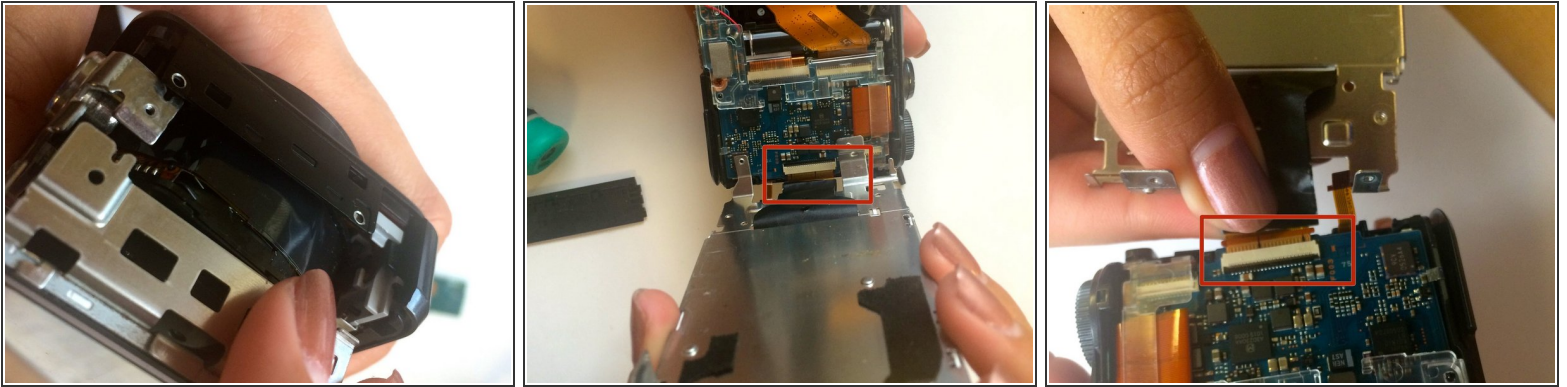
- Once the side is loose, apply a small amount of force to remove the shell.
- ⓘ Remove one side and then the other to avoid breaking any piece of the camera.
- ⓘ Keep the battery compartment open to make this step easier.

## Step 6 — Removing the Motherboard



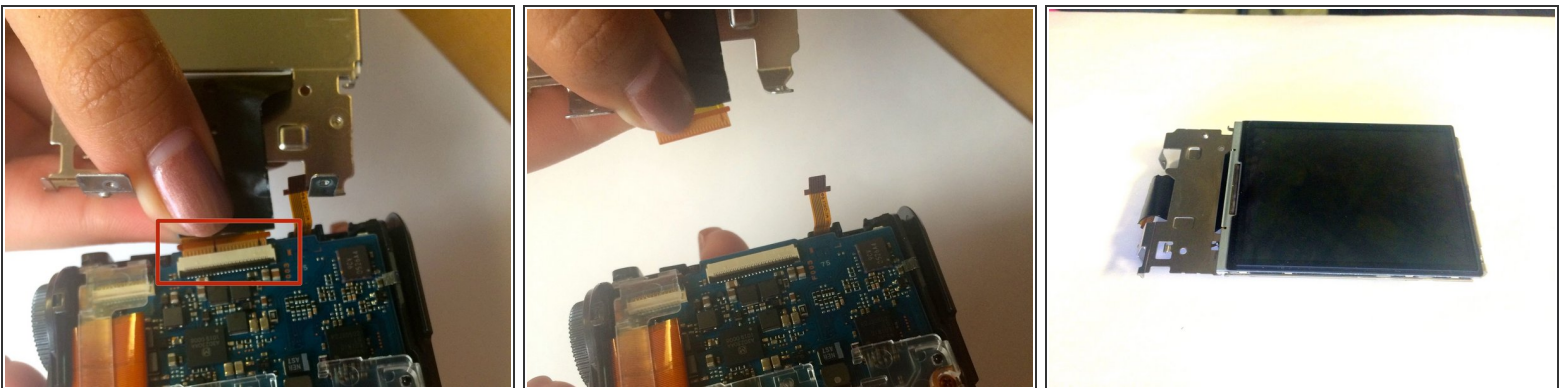
- Removing the outer shell will expose the motherboard (the green chip).
- Carefully grab the motherboard and flip it over.
- Locate the ribbon wire protruding from the motherboard. Grip the wire as close to the white square as possible and slightly pull it to disconnect it from the wire.

## Step 7 — Detaching Metal around LCD Screen



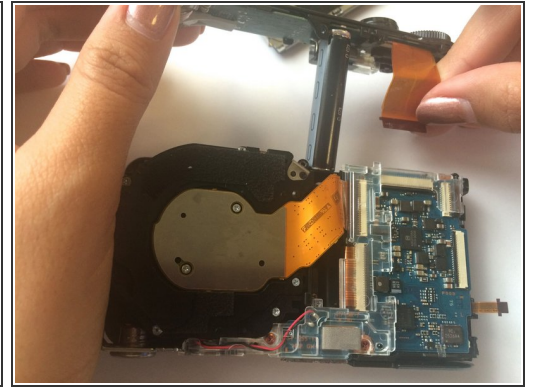
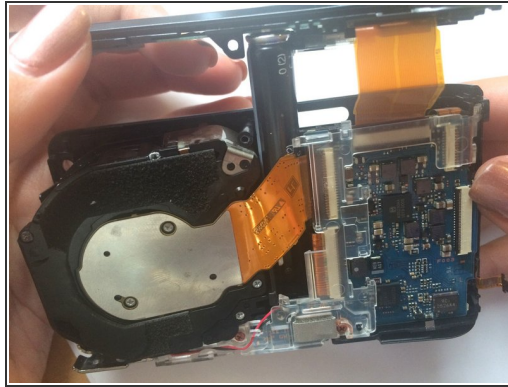
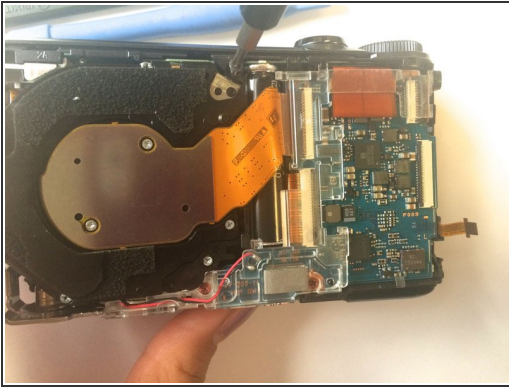
- Remove the LCD Screen to separate the metal frame connecting the screen to the camera.
- Gently pull the metal frame away, keeping in mind that the right end of the screen is attached by a ribbon wire.
- Slowly remove the metal frame until it fully pops off.

## Step 8 — Detaching Ribbon Wires



- Flip the metal screen to be facing down. There will be a small black clip on the white connector that will allow the ribbon wire to be removed.
- Carefully lift the black clip and slide the ribbon out in order to remove the LCD screen.

## Step 9 — Removing Top Shell



- Grab your Phillips #00 tool and remove the screw located at the top middle of the camera.
- ⓘ There is a ribbon wire on the top right. Make sure to disconnect the ribbon wire as you did in the previous step.
- Slowly and carefully pull the ribbon wire up.

## Step 10 — Removing Front Outer Shell



- Pull off the front outer shell by pushing from the left side.

To reassemble your device, follow these instructions in reverse order.