



Cyber-shot DSC-H55 Lens Replacement

This guide will demonstrate how to successfully replace the Cyber-shot DSC-H55's lens.

Written By: Jazmin Young



INTRODUCTION

This Cyber-shot DSC-H55 guide will show you how to remove all the necessary pieces in order to reach and disconnect the lens and replace it.



TOOLS:

- [Phillips #00 Screwdriver](#) (1)
 - [iFixit Opening Tools](#) (1)
-

Step 1 — Removing Screws



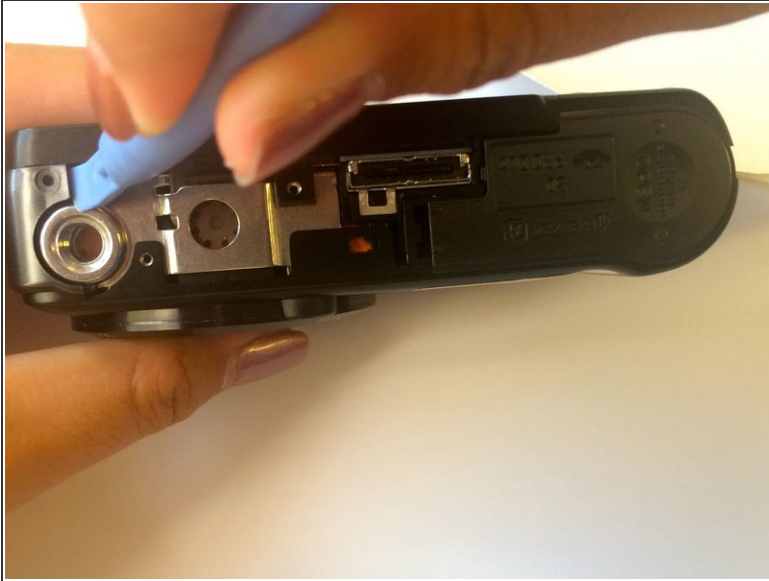
- Use the Phillips #00 screwdriver to remove the two screws located on the right side of the camera.

Step 2 — Removing Bottom Piece



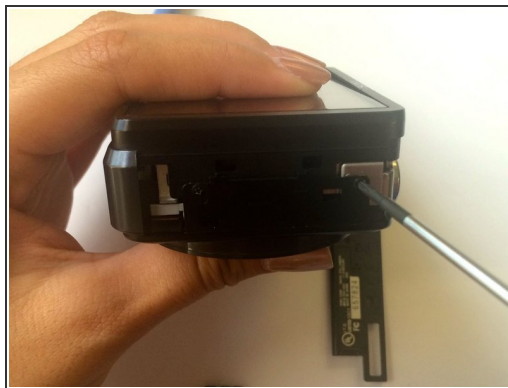
- Use the Phillips #00 screwdriver to remove the three screws on the bottom of the camera.
- Use the plastic opening tool to lift the cover containing the patent information off.

Step 3 — Removing Left Side Piece



- Place the plastic opening tool in the crack between the metal circle and the black piece on the left.
- Slide the black cover and lift to remove.

Step 4 — Removing Newly Exposed Screws



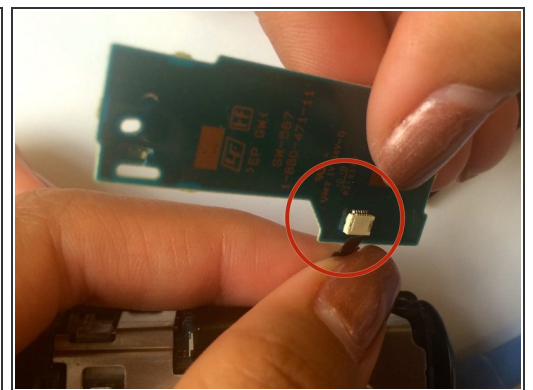
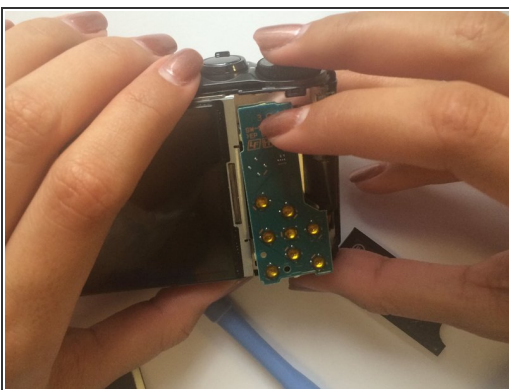
- The first picture shows how the left side of the camera looks once we remove the side piece.
- Use the Phillips #00 screwdriver to remove the two screws on this left side.
- Flip your camera to the right side where we removed the first two screws.
- Use the plastic opening tool into the crack and lift in order to loosen that side of the shell. Loosening one side makes removing the entire shell easier.

Step 5 — Removing Back Shell



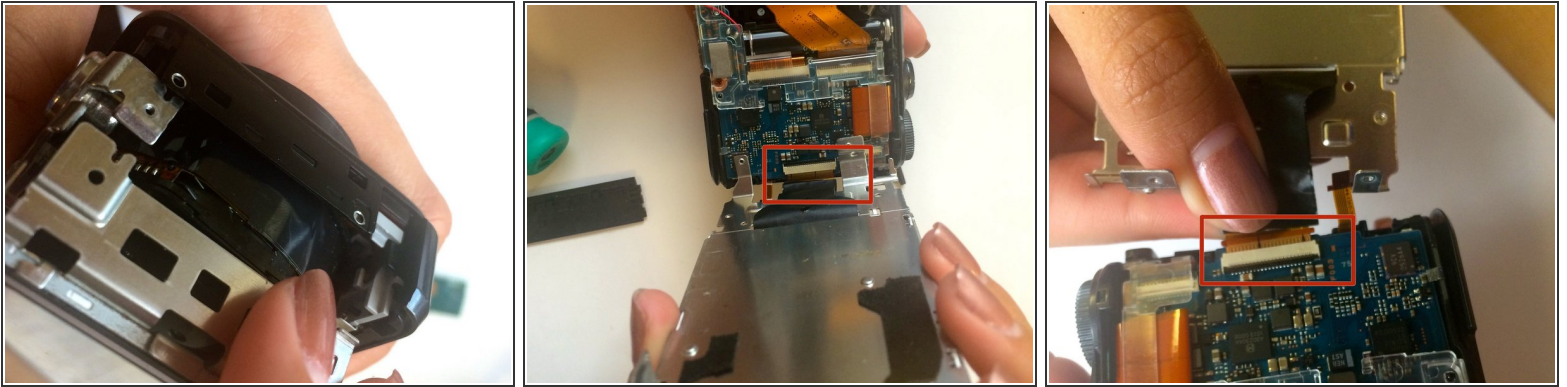
- Once the side is loose, apply a small amount of force to remove the shell.
- ⓘ Remove one side and then the other to avoid breaking any piece of the camera.
- ⓘ Keep the battery compartment open to make this step easier.

Step 6 — Removing the Motherboard



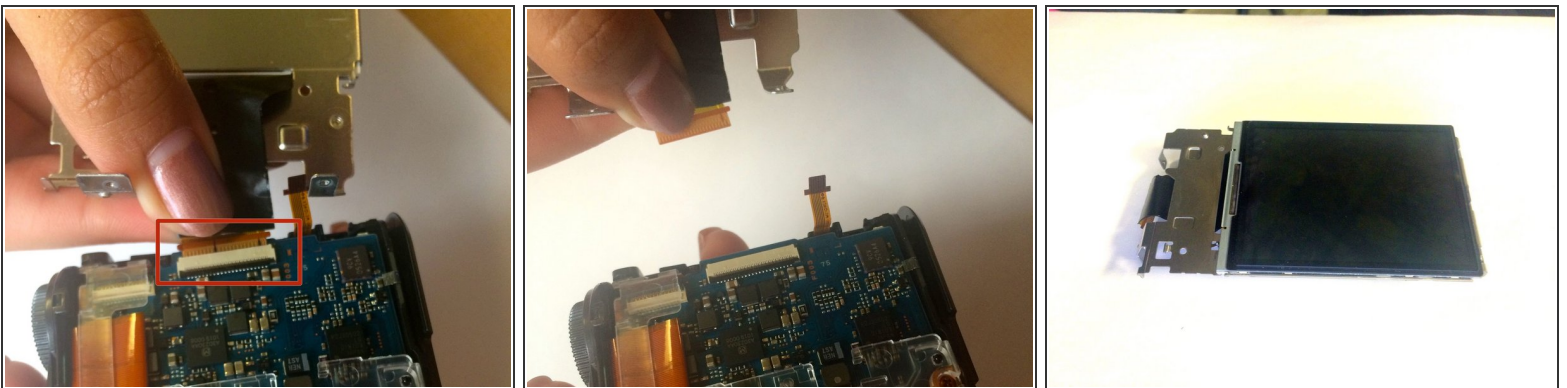
- Removing the outer shell will expose the motherboard (the green chip).
- Carefully grab the motherboard and flip it over.
- Locate the ribbon wire protruding from the motherboard. Grip the wire as close to the white square as possible and slightly pull it to disconnect it from the wire.

Step 7 — Detaching Metal around LCD Screen



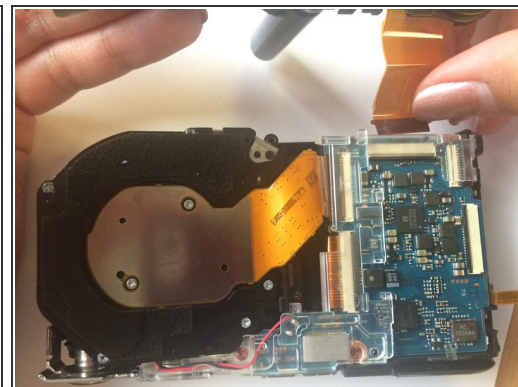
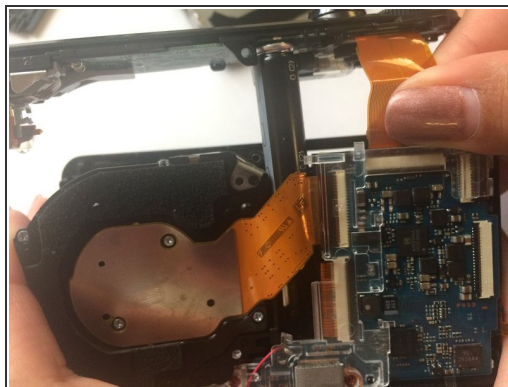
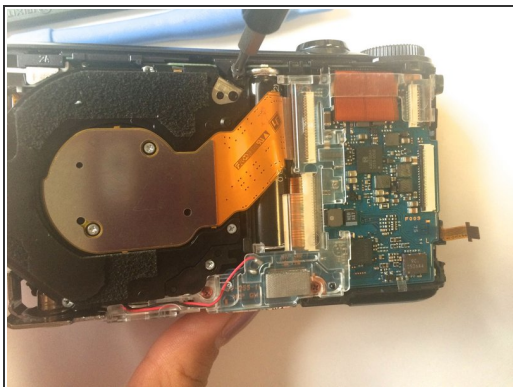
- Remove the LCD Screen to separate the metal frame connecting the screen to the camera.
- Gently pull the metal frame away, keeping in mind that the right end of the screen is attached by a ribbon wire.
- Slowly remove the metal frame until it fully pops off.

Step 8 — Detaching Ribbon Wires



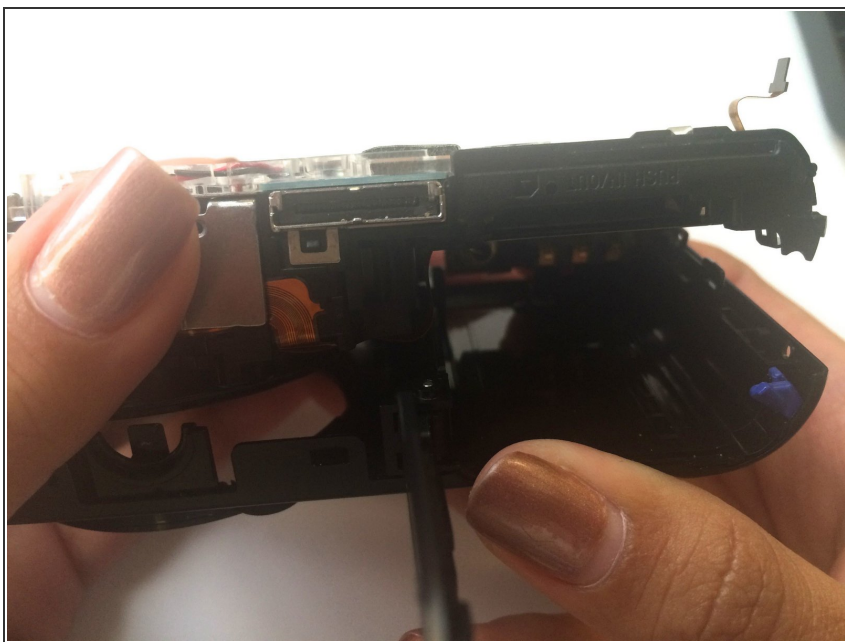
- Flip the metal screen to be facing down. There will be a small black clip on the white connector that will allow the ribbon wire to be removed.
- Carefully lift the black clip and slide the ribbon out in order to remove the LCD screen.

Step 9 — Removing Top Shell



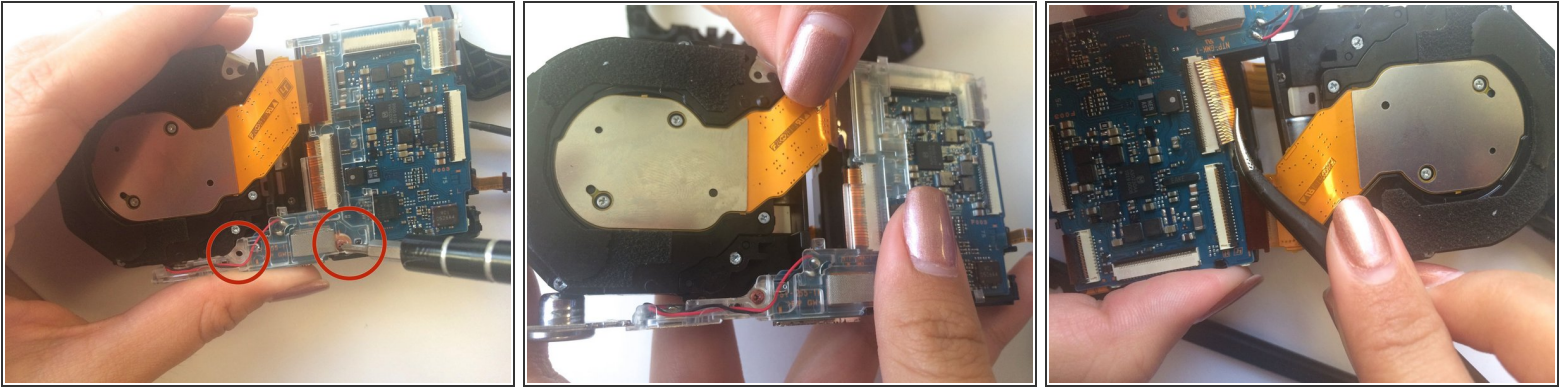
- Remove the Phillips #00 screw located at the top middle of the camera.
- There is a ribbon wire on the top right. Make sure to disconnect the ribbon wire as you did in the previous step.
- Slowly and carefully pull up.

Step 10 — Removing Front Outer Shell



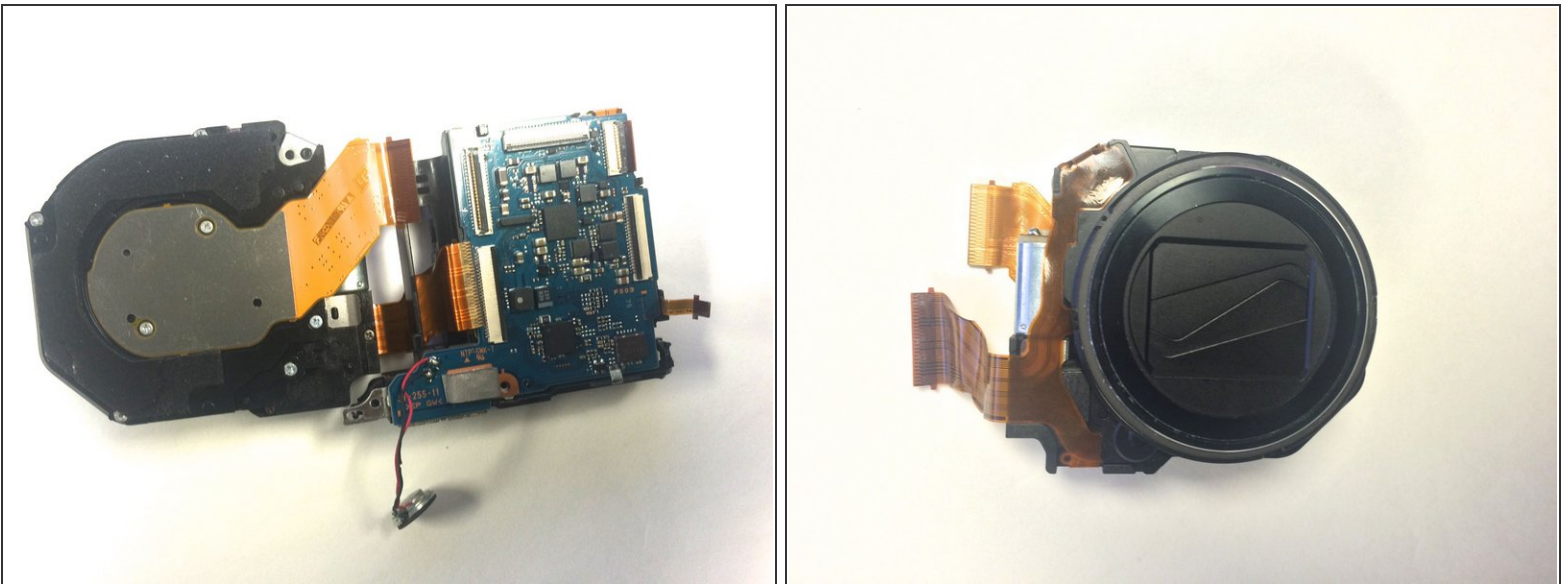
- Pull off front outer shell by pushing off from left side.

Step 11 — Removing Ribbon Wires around Lens



- Remove the two orange screws located under the lens.
- Remove the plastic by grabbing the right side of the camera and pushing it away in order for the plastic to come out.
- By removing the plastic, we can now easily remove the ribbon wires by lifting the black clip and sliding ribbon wire out. Use tweezers if necessary.

Step 12 — Remove Lens



- Once the ribbons are detached, the lens is now completely detached from camera and can be replaced.

To reassemble your device, follow these instructions in reverse order.