



CyberHome CH-DVD 300 Disc Tray Bracket Replacement

Remove the disc tray bracket of your CyberHome CH-DVD 300 to take out jammed CDs and check condition of laser housing.

Written By: Chris Menezes



INTRODUCTION

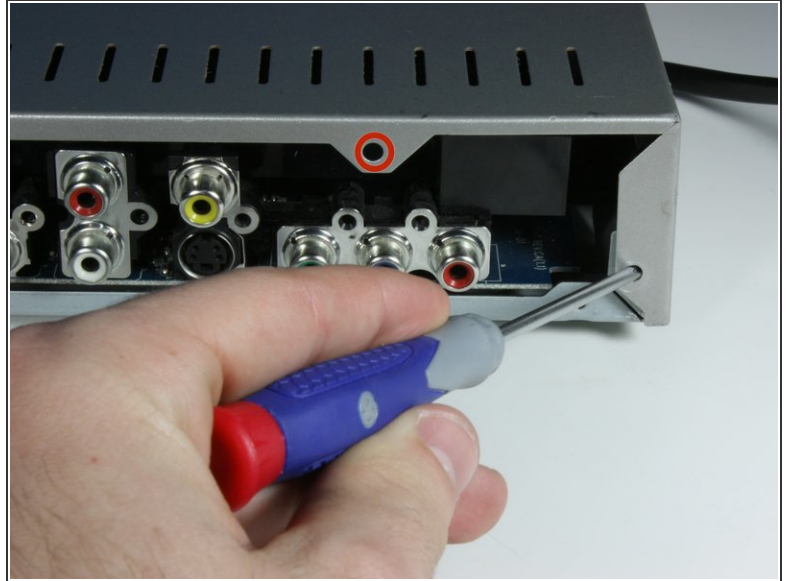
To remove the disc tray bracket, you must first remove the top panel of the DVD, which exposes the disc tray bracket. The Disc tray bracket sits on top of the disc tray to keep the disc in place while in use.




TOOLS:

- [Phillips #0 Screwdriver](#) (1)
-

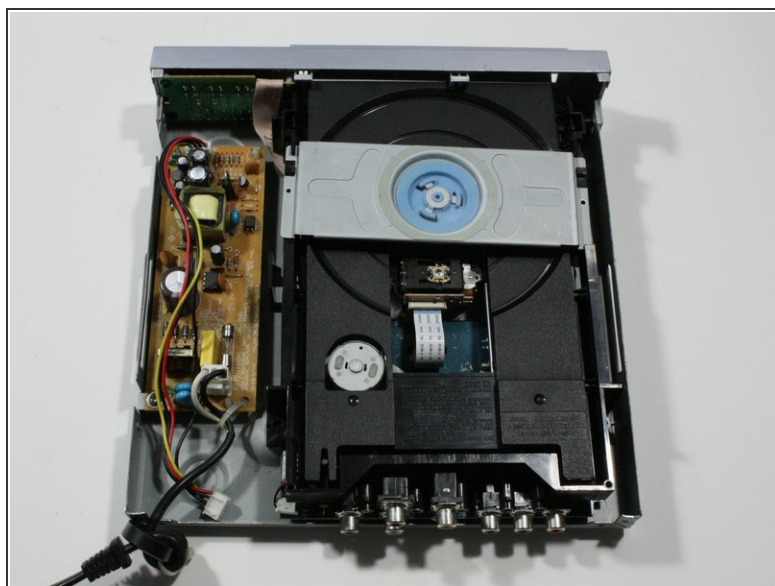
Step 1 — Top Panel



 Turn the DVD player off. Unplugging the DVD player while it is on may result in damage to the DVD player or an inserted CD.

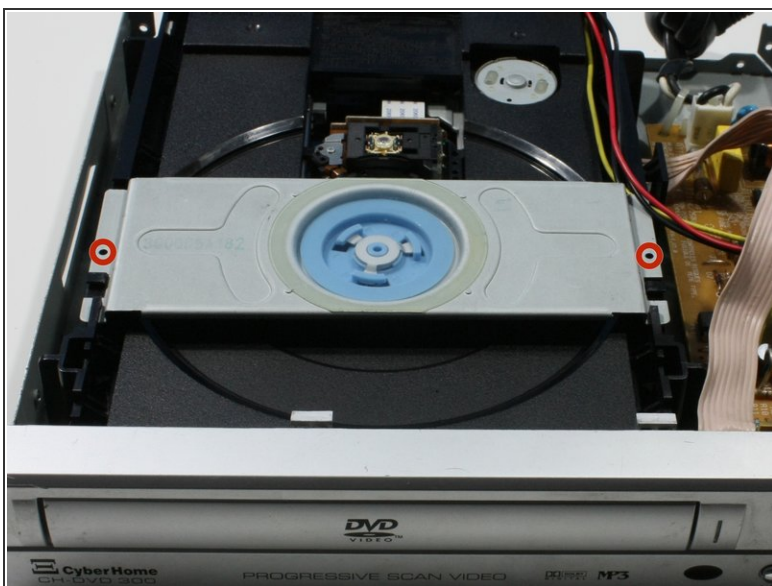
- Unplug the DVD player from the wall socket.
- Locate the 15mm Phillips screws on the left side (1 screw), right side (1 screw), and back (4 screws) of the DVD Player. Use the appropriate Phillips head screwdriver to remove the six screws.

Step 2



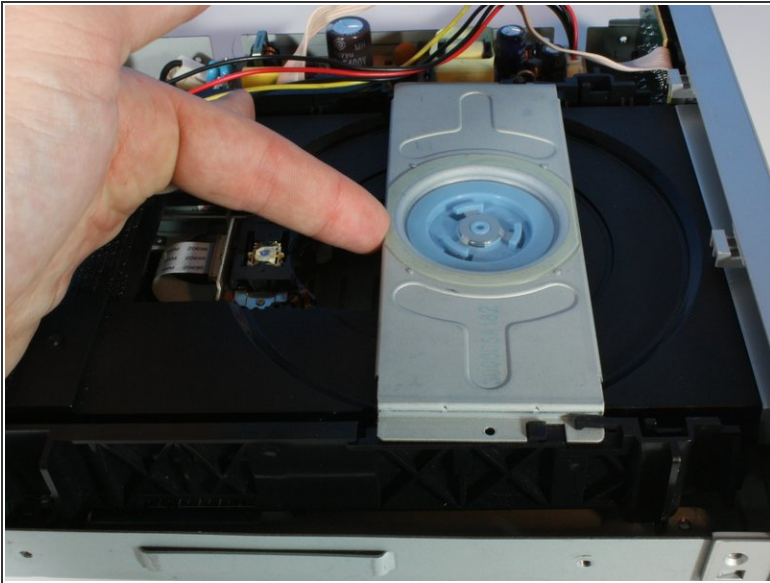
- Remove the top panel of the DVD Player by:
 - Sliding the top panel backwards.
 - Gently lifting the back of the top panel up.

Step 3 — Disc Tray Bracket



- Remove the 6.3mm screws keeping the disc tray bracket connected to the disc tray.

Step 4



- Lift up on the bracket by:
 - Sliding the disc tray bracket forward.
 - Lifting the back edge up.

To reassemble your device, follow these instructions in reverse order.