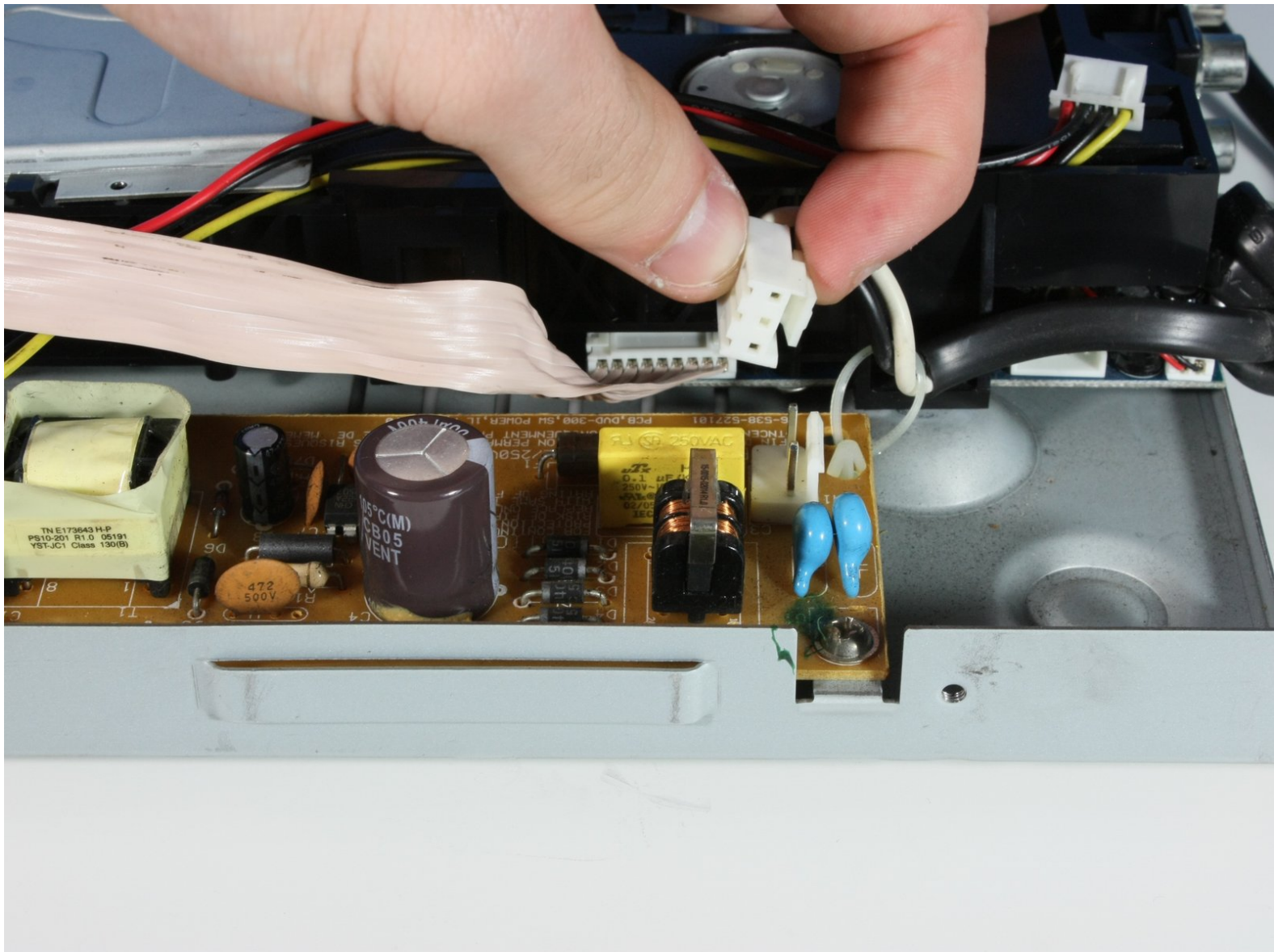




CyberHome CH-DVD 300 Power Supply Replacement

Replace the power supply supply in the CyberHome CH-DVD 300.

Written By: Chris Menezes



INTRODUCTION

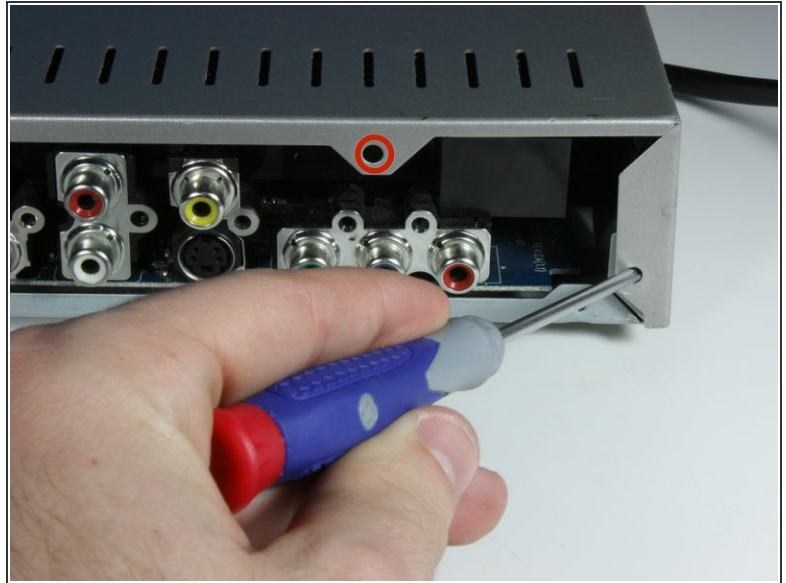
Replacing the power supply involves unplugging the white connection cord from the power supply board after the top panel is removed.




TOOLS:

- [Phillips #0 Screwdriver](#) (1)
 - [Large Needle Nose Pliers](#) (1)
-

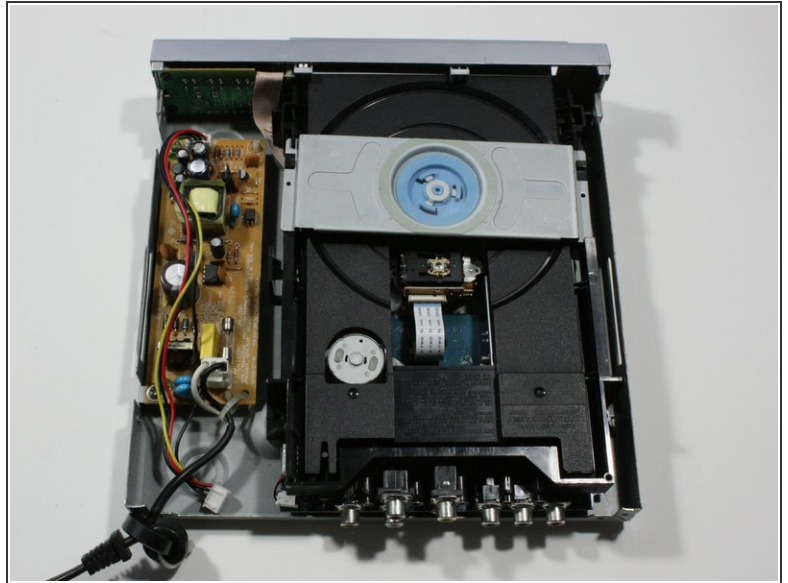
Step 1 — Top Panel



 Turn the DVD player off. Unplugging the DVD player while it is on may result in damage to the DVD player or an inserted CD.

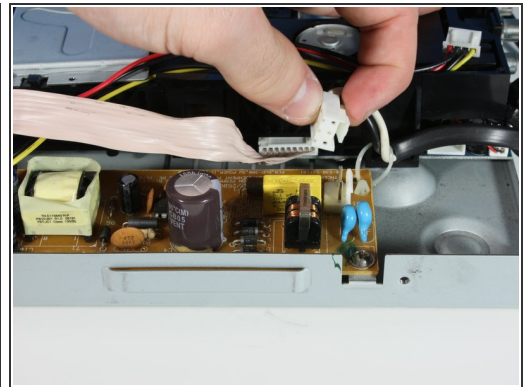
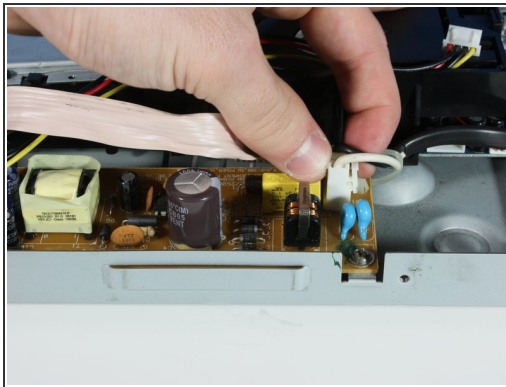
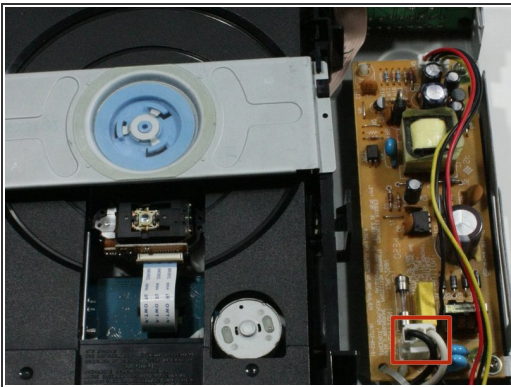
- Unplug the DVD player from the wall socket.
- Locate the 15mm Phillips screws on the left side (1 screw), right side (1 screw), and back (4 screws) of the DVD Player. Use the appropriate Phillips head screwdriver to remove the six screws.

Step 2



- Remove the top panel of the DVD Player by:
 - Sliding the top panel backwards.
 - Gently lifting the back of the top panel up.

Step 3 — Power Supply



- Orient the device to locate the power supply board on the far right corner. Use needle nose pliers to pull the white connector from the power supply board.
- ❗ The power supply board is connected directly to the power cord. This is not the same thing as the mother board.

To reassemble your device, follow these instructions in reverse order.