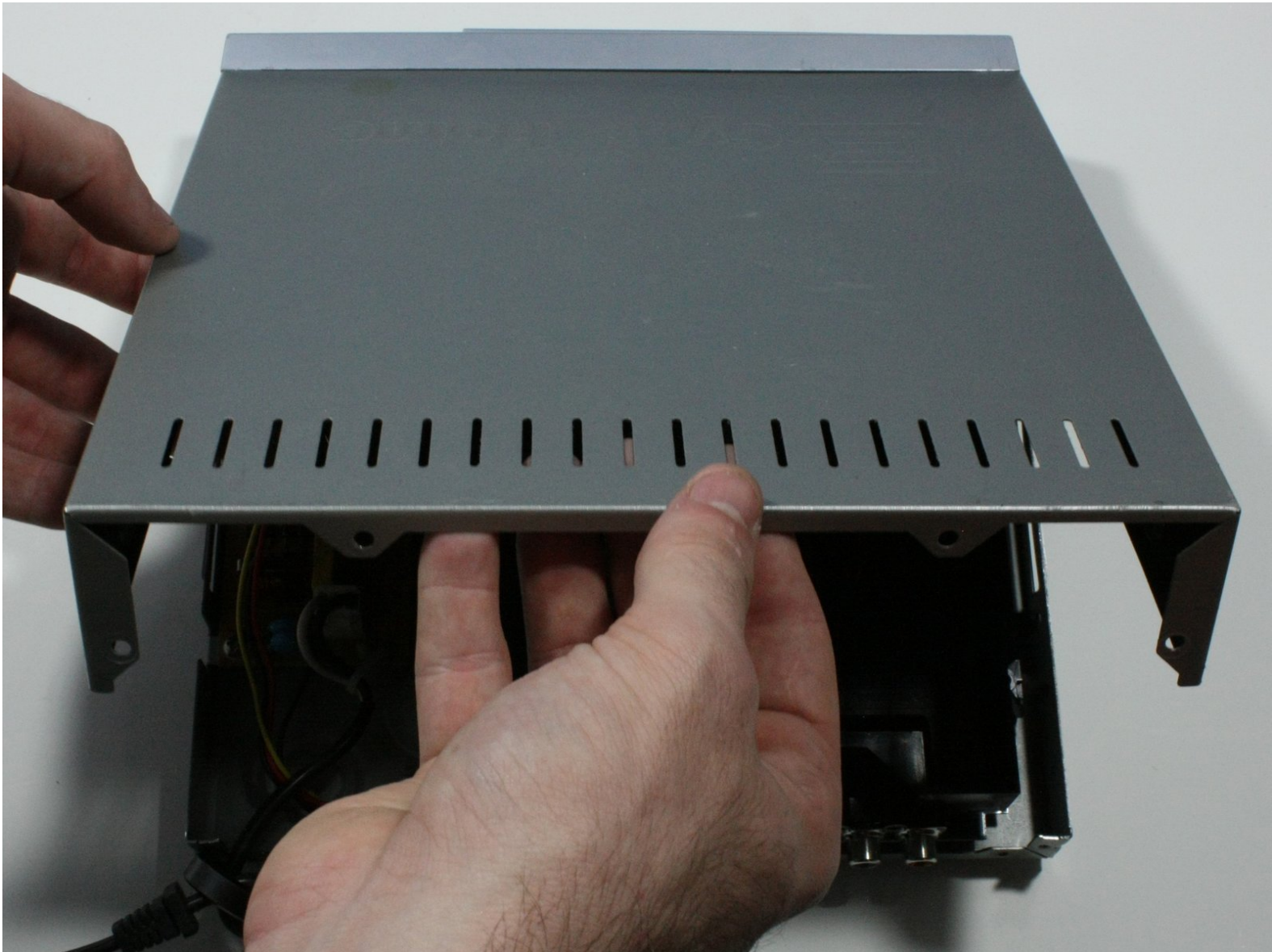




CyberHome CH-DVD 300 Top Panel Replacement

Replace the Top Panel in the CyberHome CH-DVD 300.

Written By: Chris Menezes



INTRODUCTION

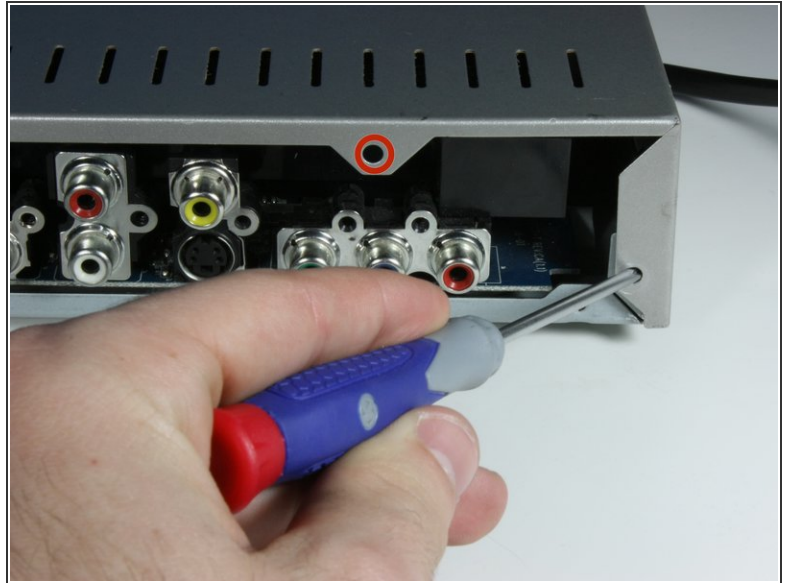
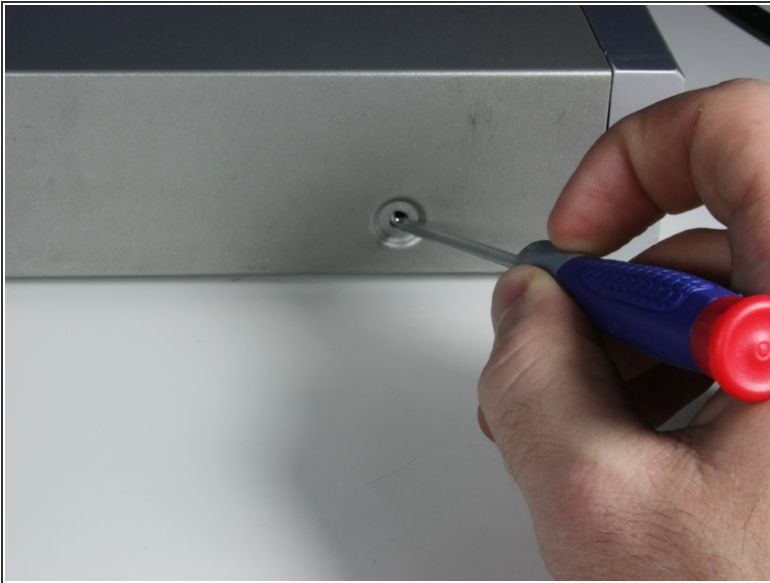
Replacing the top panel only involves unscrewing four screws and gently removing the top panel from the rest of the dvd player.




TOOLS:

- [Phillips #0 Screwdriver](#) (1)
-

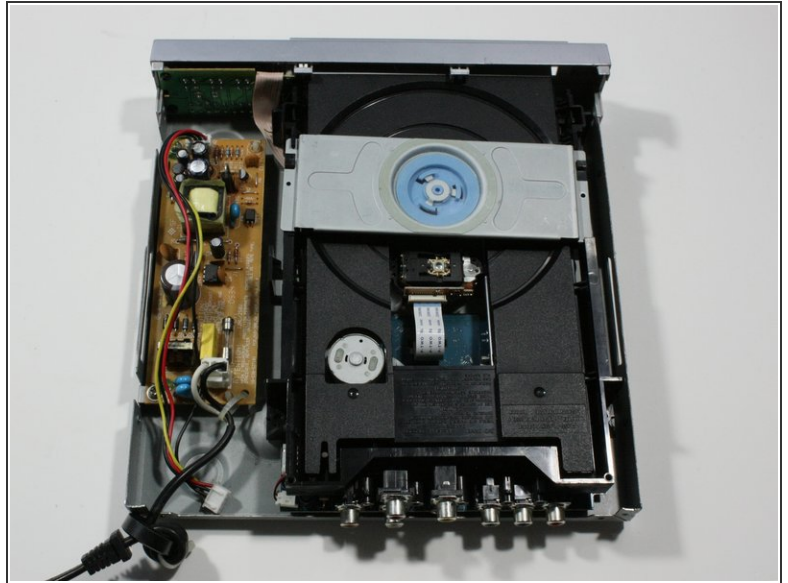
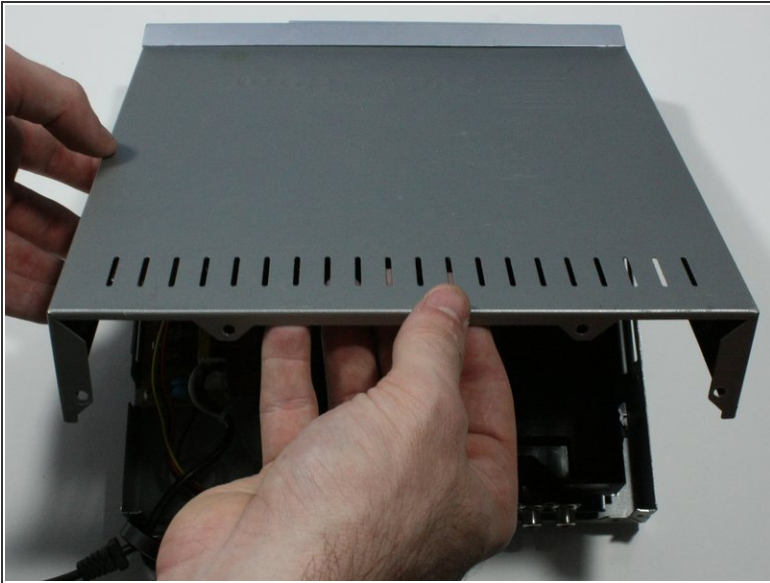
Step 1 — Top Panel



 Turn the DVD player off. Unplugging the DVD player while it is on may result in damage to the DVD player or an inserted CD.

- Unplug the DVD player from the wall socket.
- Locate the 15mm Phillips screws on the left side (1 screw), right side (1 screw), and back (4 screws) of the DVD Player. Use the appropriate Phillips head screwdriver to remove the six screws.

Step 2



- Remove the top panel of the DVD Player by:
 - Sliding the top panel backwards.
 - Gently lifting the back of the top panel up.

To reassemble your device, follow these instructions in reverse order.