



Cyclops Helios Teardown

Cyclops Helios Teardown

Written By: Shaun Koide



INTRODUCTION

Tearing down a Cyclops Helios headlamp. Both hardware identification and functionality for the device are discussed.



TOOLS:

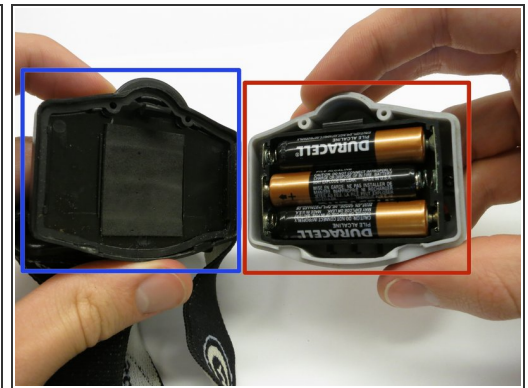
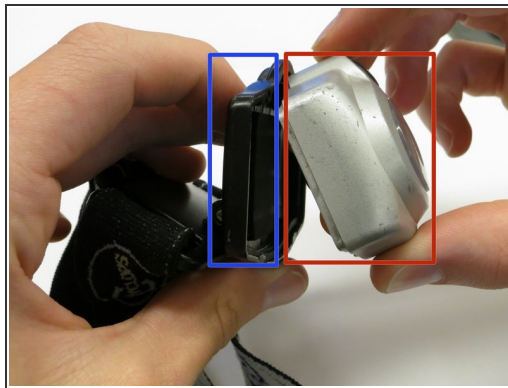
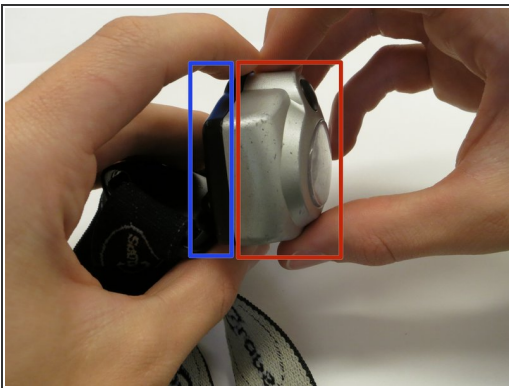
- [Phillips #2 Screwdriver](#) (1)
-

Step 1 — Cyclops Helios Teardown



- Power off Cyclops Helios before tearing down by pushing the black button until the LEDs no longer emit visible light.
- **Black button** - circled in red

Step 2



- Using two hands, carefully separate the front panel and back panel of the Cyclops Helios.
- **Front panel** - boxed in red
- **Back panel** - boxed in blue

Step 3



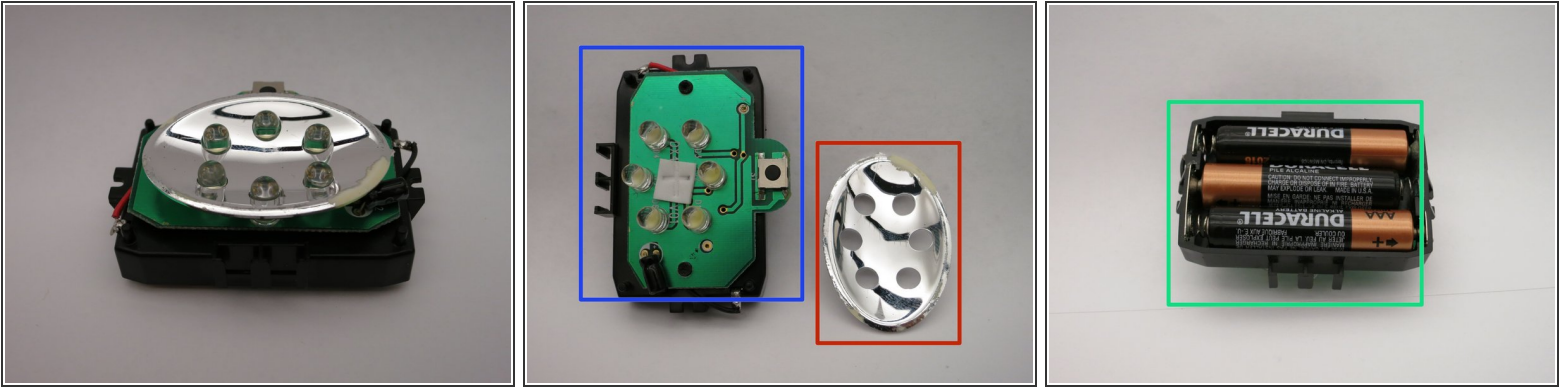
- Use a Phillips head screwdriver to remove two screws from the front panel.
- The two screws fasten the outer enclosure with the inner electronics of the front panel.

Step 4



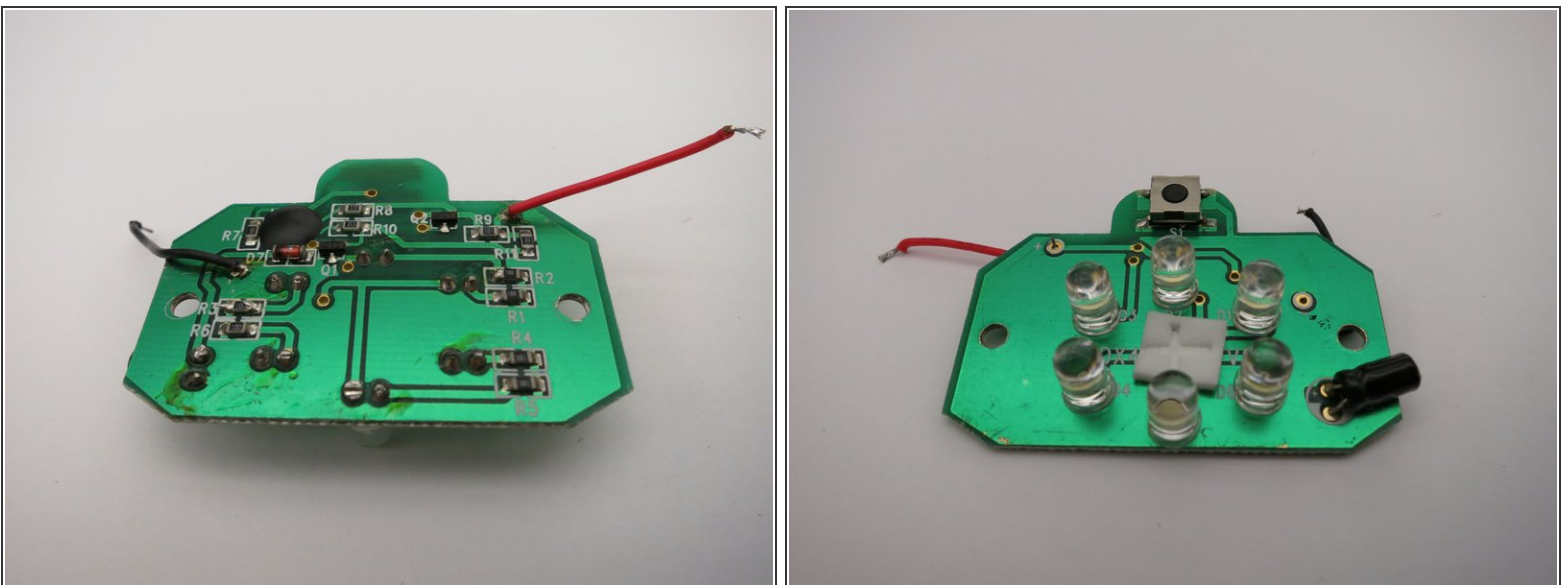
- Within the enclosure of the front panel there is a clear plastic lens, and plastic button insert. Both are removable.
- **Clear plastic lens** - boxed in red
- **Plastic button insert** - circled in blue

Step 5



- The inner electronics of module of the front panel includes a parabolic mirror, circuit board, and battery holder.
 - **Circuit board** - boxed in blue
 - **Parabolic mirror** - boxed in red
 - **Battery holder** - boxed in green

Step 6



- Separate the circuit board from the battery holder by desoldering the black and red wires from the battery holder.