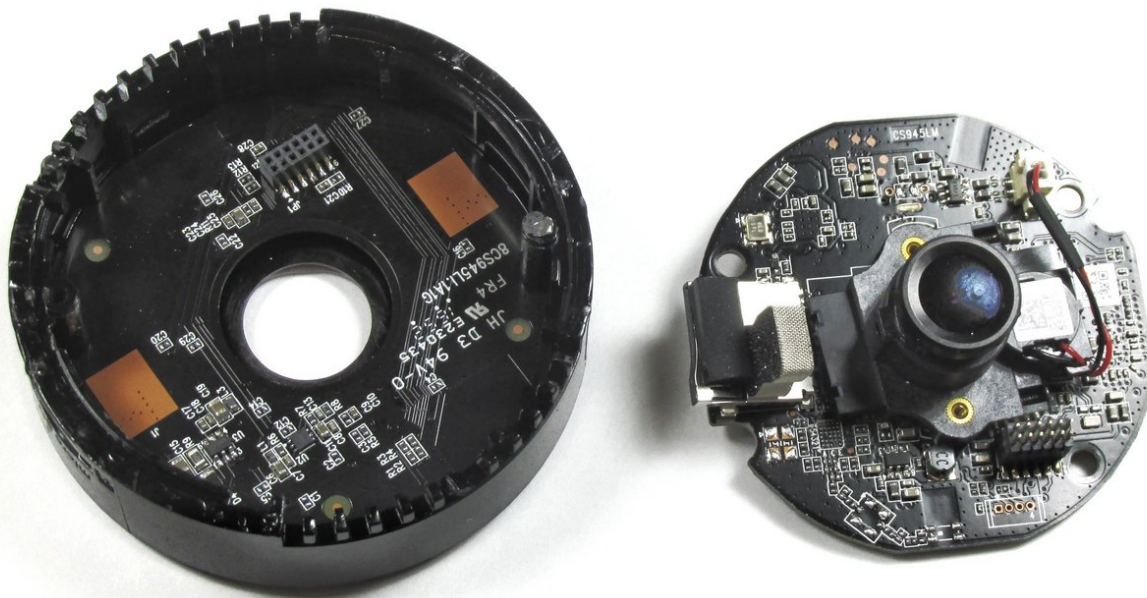




# D-Link HD Wi-Fi Camera Motherboard Replacement

This guide will show you how to remove the motherboard from your security camera.

Written By: Morgen Jaques



## INTRODUCTION

This guide will show how to take apart a D-Link DCS 936L Wi-Fi security camera and remove the motherboard using an opening tool and a Philips 00 screwdriver. There are not many loose pieces making this a quick process as long as you're careful.



### TOOLS:

- [Phillips #00 Screwdriver](#) (1)
  - [iFixit Opening Tools](#) (1)
-

## Step 1 — Motherboard



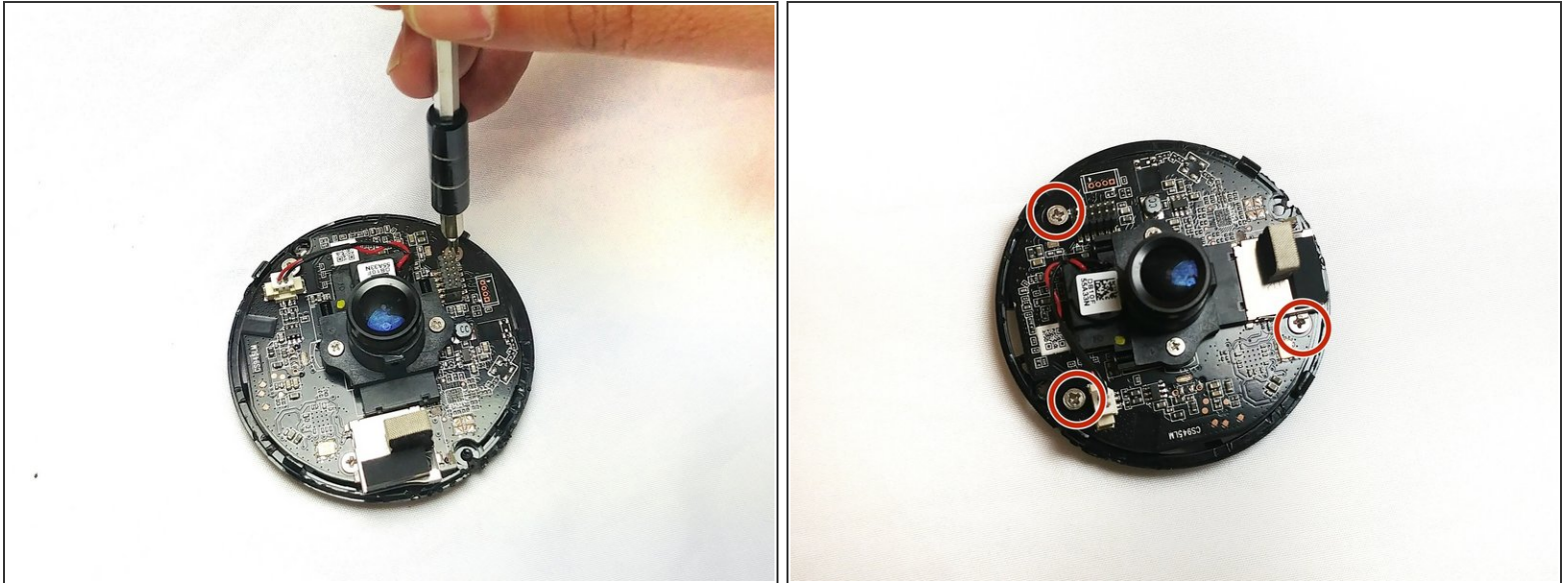
- Place the camera upwards between your thumb and first finger.
- Tilt the camera to the best position and loosen the captive linings using a plastic opening tool.
- Slide the top cover outwards to separate the upper section from the lower lid using the plastic opening tool.

## Step 2



- Remove the 6.0mm Phillips #00 screws that secure the back cover to the inner frame.
- Lift the rear lid upwards using your fingers and separate it from the internal components and motherboard.

## Step 3



- Unscrew the motherboard from the frame. There are 3 Phillips #00 5.0mm screws holding it in place.
- Then (gently!) remove the motherboard and the lens with your fingers.

To reassemble your device, follow these instructions in reverse order.