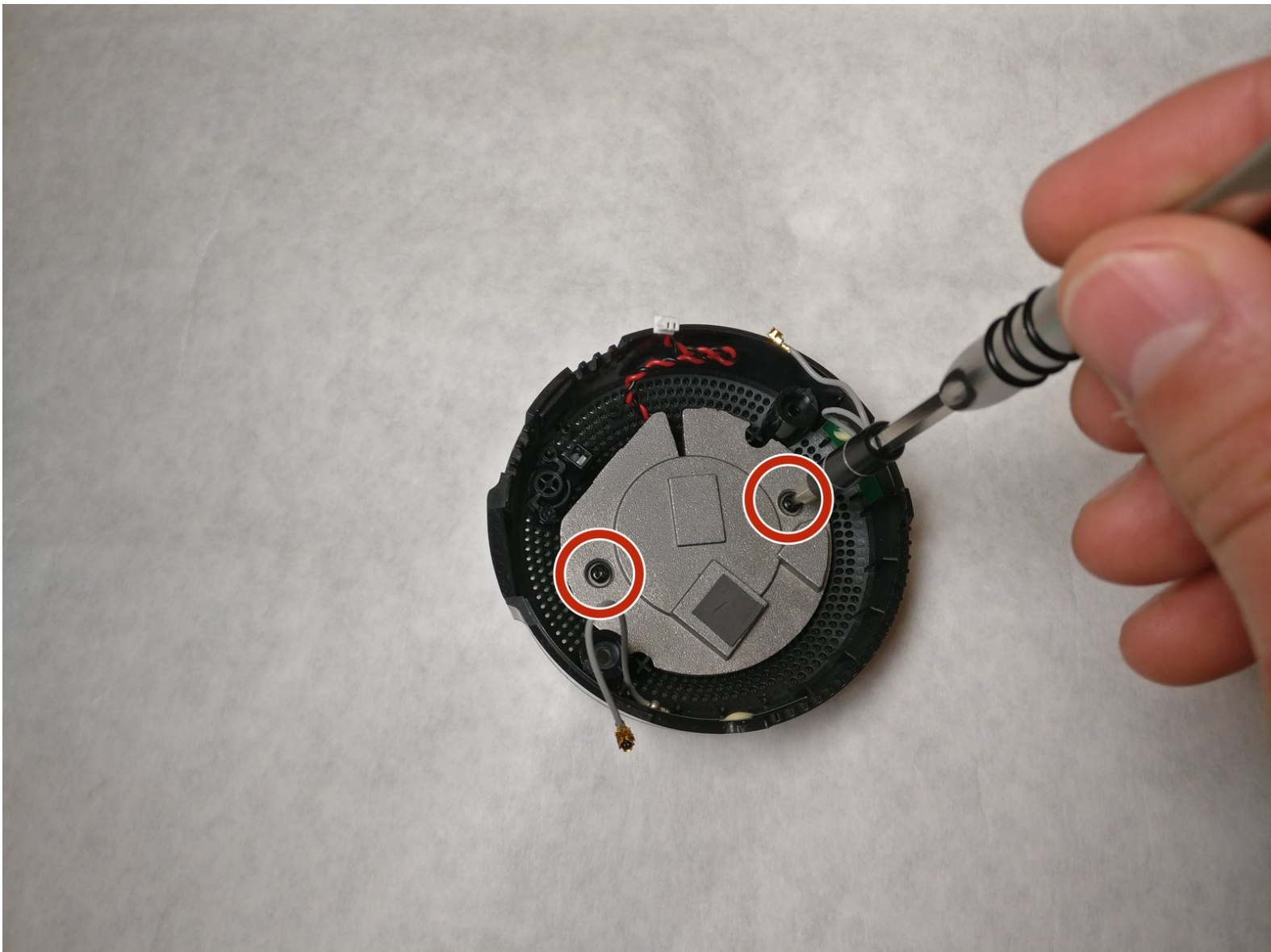




# D-Link DCS-2630L Wi-Fi Camera Speaker Replacement

This guide will walk through the necessary steps to replace the speaker in the D-Link DCS-2630L Wi-Fi Camera.

Written By: Collyn Dodge







## TOOLS:

- [Phillips #00 Screwdriver](#) (1)
-



## Step 1 — Back casing



- Remove the two 9.65 mm screws on the back cover using the Philips head PH00 screw driver.

## Step 2



- Remove the back casing to expose the circuit board.

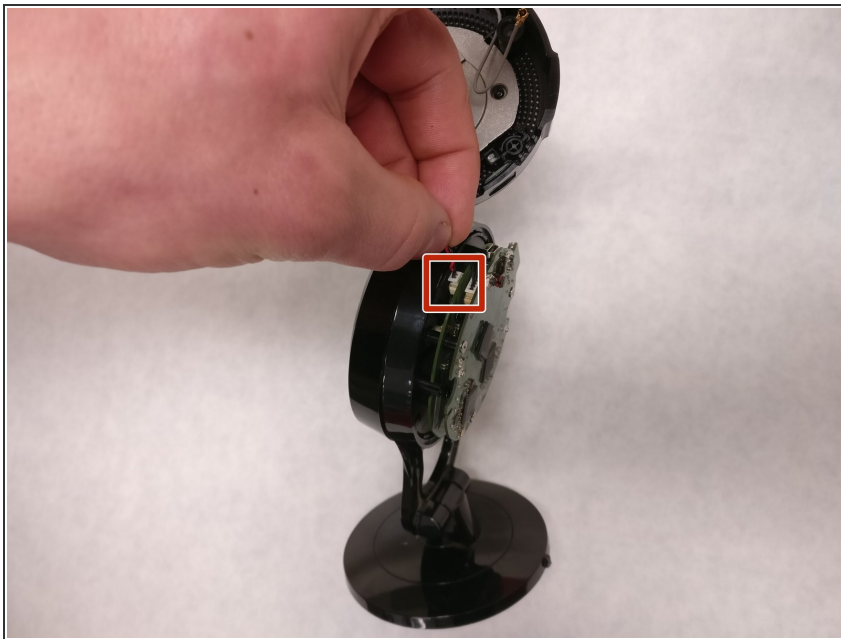


### Step 3



- Detach the gray antenna wires by gently pulling on the side closest to the circuit board.

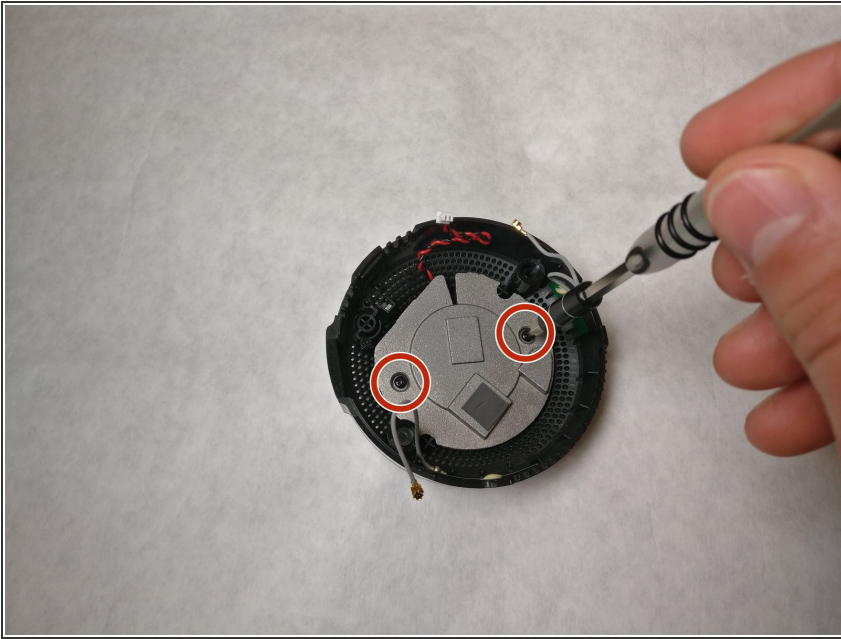
### Step 4



- Detach the speaker wire by gently pulling on the side closest to the body of the camera.

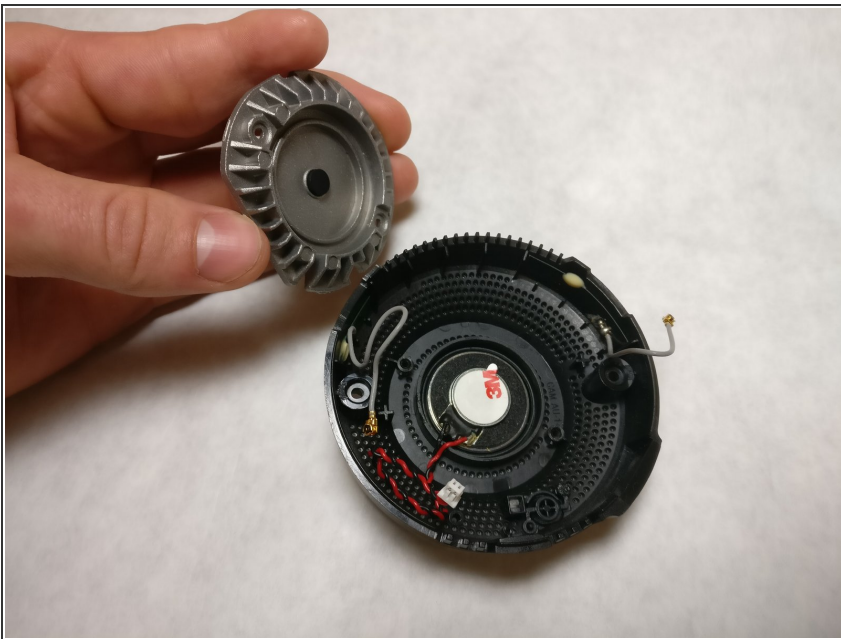


## Step 5 — Speaker



- Remove the two 7.25 mm screws using the Ph00 head.

## Step 6



- Remove the back grey speaker plate



## Step 7



- Remove the speaker by gently pulling on the wire near the speaker.

To reassemble your device, follow these instructions in reverse order.