



D-Link DCS-5222L Speaker Replacement

How to replace a D-Link DCS-5222L speaker.

Written By: Jason Munyon



INTRODUCTION

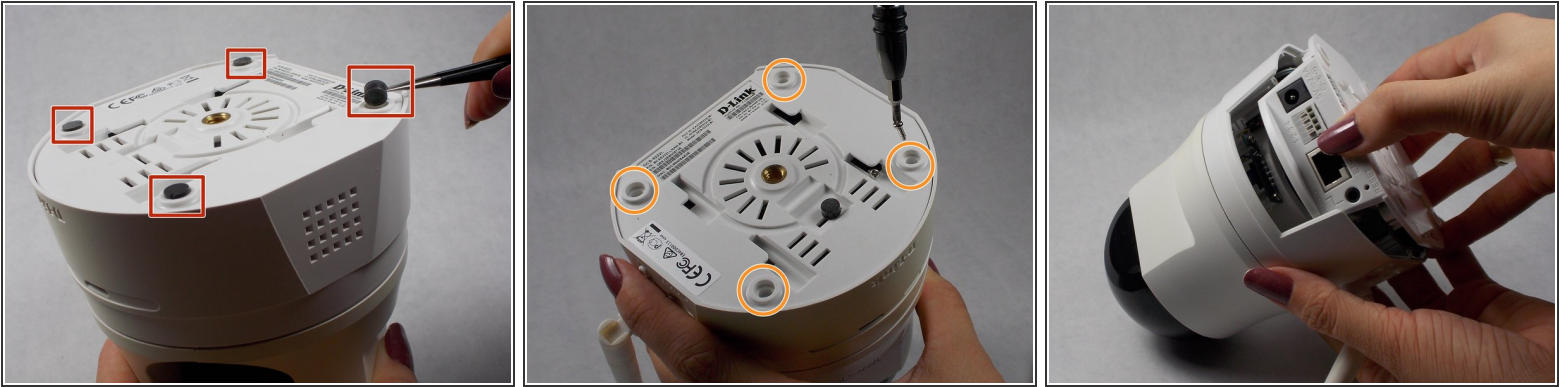
If you find your camera is experiencing distorted audio it could be caused by a malfunctioning speaker. If this is the case the replacement of the speaker is a pretty simple and straightforward task. It is important that you keep track of the small screws, they are very easy to lose track of.



TOOLS:

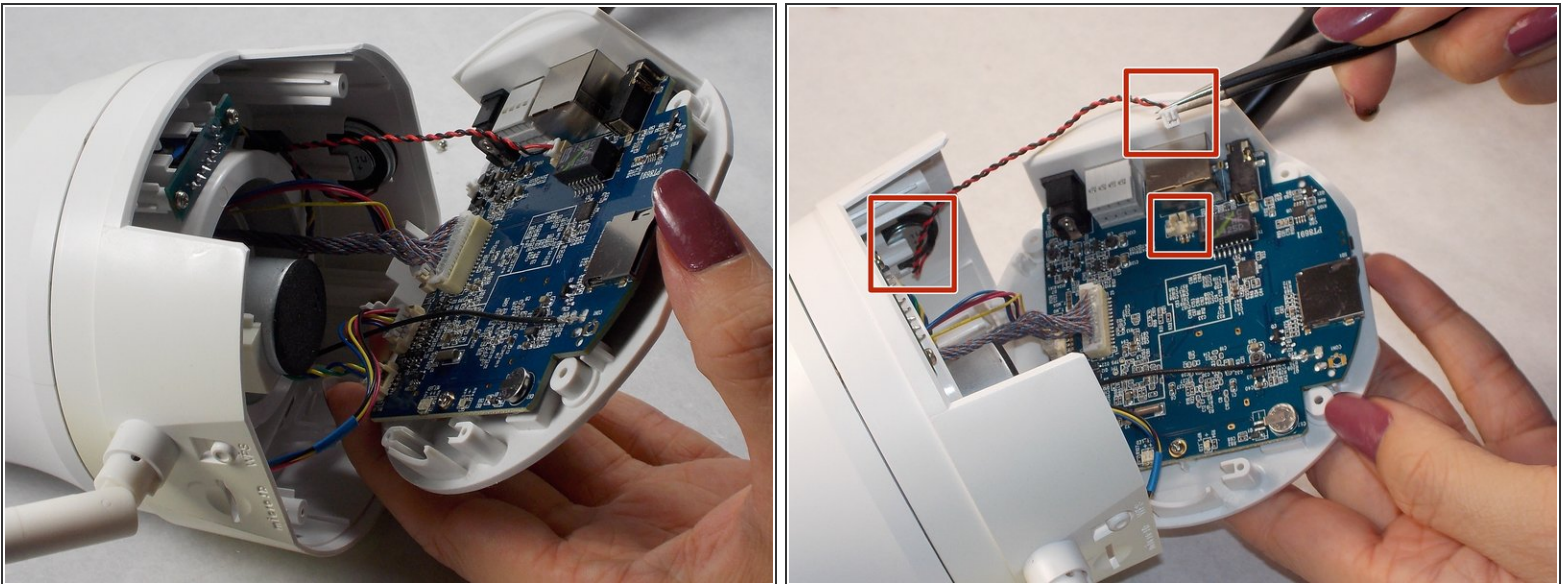
- [Phillips #1 Screwdriver](#) (1)
 - [Tweezers](#) (1)
-

Step 1 — Speaker




- Remove the four rubber pieces to gain access to the screws.
- Remove the four 7mm screws with a #1 Phillips screwdriver.
- Remove the bottom of the camera body.

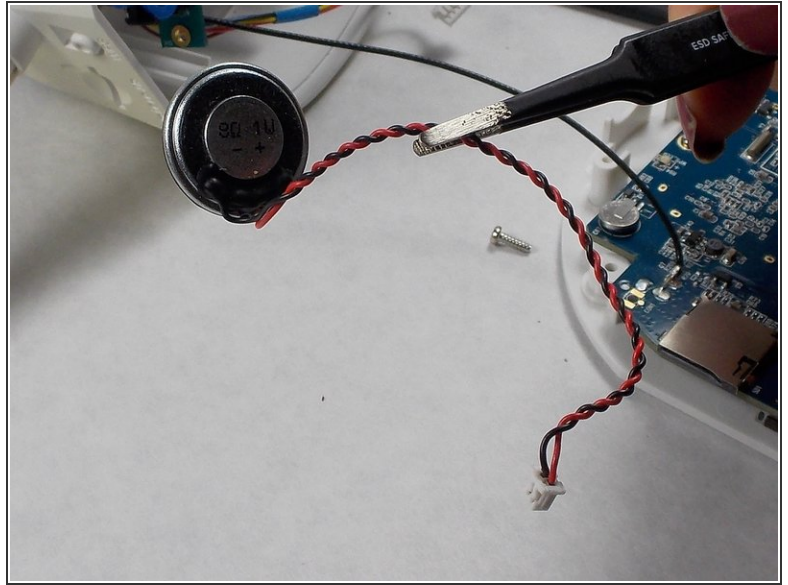
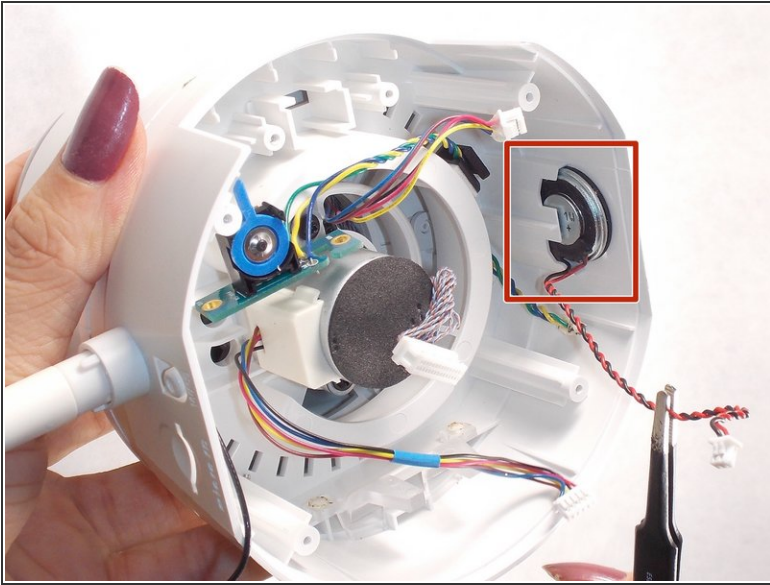
Step 2



- Using safety tweezers, disconnect the 2-wire connector with the red and black leads located close to the ethernet and SD ports.

 Disconnect the cables gently.

Step 3



- The speaker is circular, black and silver in color with a red and black cord. It is easily removed from the upper body of the camera with your fingers or safety tweezers.

To reassemble your device, follow these instructions in reverse order.