



# D-Link DIR 600 Teardown

This is a teardown of the D-Link DIR 600 router, with information on how to get into the device.

Written By: Zach luc



---

# INTRODUCTION

This is a teardown of the D-Link DIR 600 router, with information on how to get into the device.

---

## TOOLS:

- [Essential Electronics Toolkit](#) (1)
-

## Step 1 — Removing the Antenna



- Screw it off using your hands

## Step 2 — Finding the screws



- There are two screws on the bottom, peel off the black rubber.

⚠ Removing the warranty sticker will VOID your warranty.



### Step 3 — Opening it up



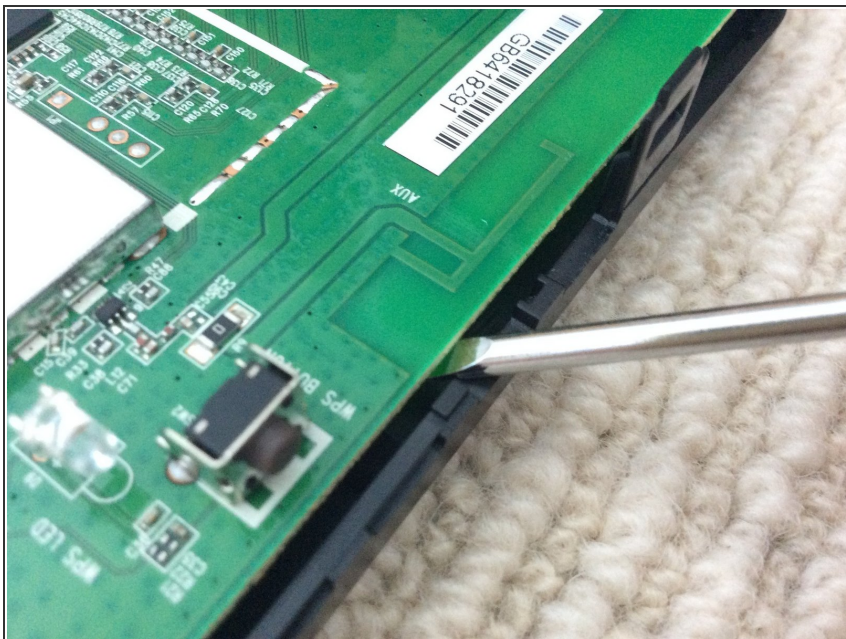
- Use a spudger or a flat screwdriver to open it up on both sides.

### Step 4 — More screws



- Unscrew the two screws

## Step 5 — Taking off the logic board



- Use a spudger or a flat screwdriver to take out the logic board

## Step 6 — Conclusion



- ❗ That concludes our teardown!