



D-Link DIR-890L Case Removal

This guide will walk you through removing the case. Prerequisite Only

Written By: Rachel Shaw



INTRODUCTION

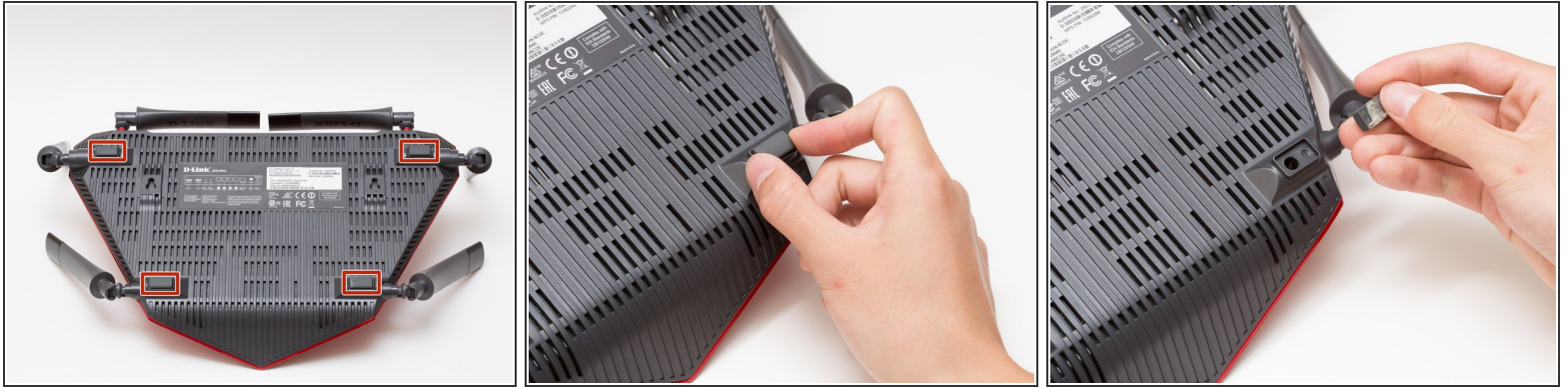
All of the components you would need to replace are contained under the red case of this router. In order to access all components of the device, the top case needs to be opened. This is a Prerequisite Only guide



TOOLS:

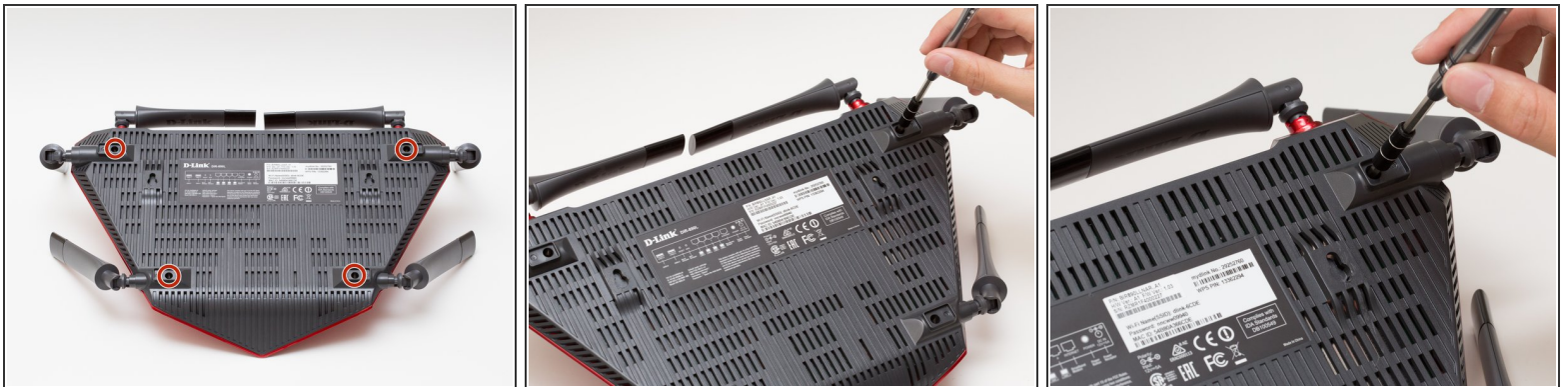
- [Phillips #1 Screwdriver](#) (1)
 - [iFixit Opening Tools](#) (1)
-

Step 1 — Case



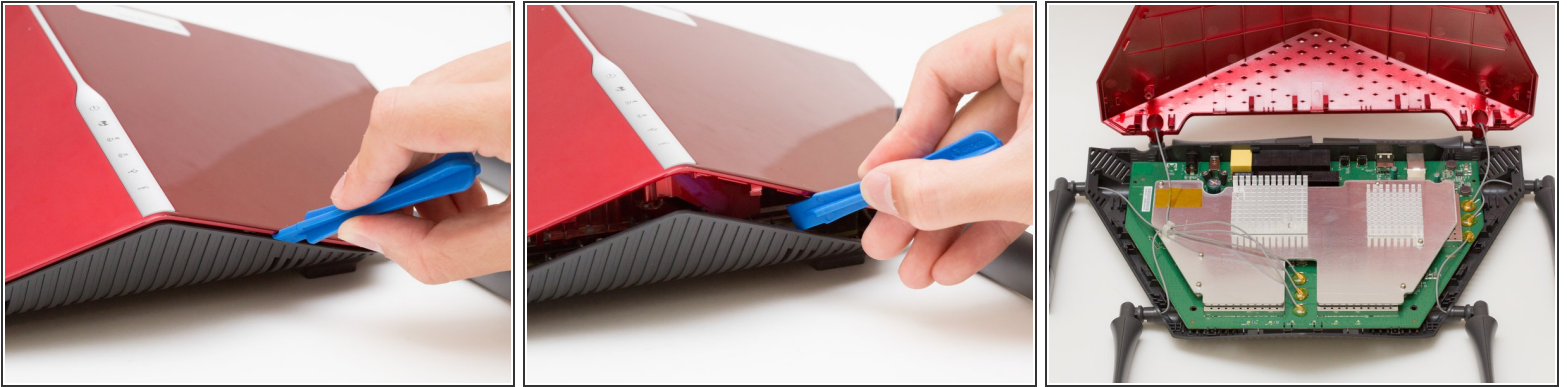
- Peel off the four rubber rectangular feet with your fingers.
- ⓘ The feet may be hard to remove. Apply additional force if necessary.

Step 2



- Unscrew the 5mm screws in each corner using the Phillips #1 screwdriver.

Step 3



- Wedge the opening tool between the red top panel and the gray bottom panel.
- Twist the opening tool to separate the panels. Work your way around the case until both of the panels are separated.

To reassemble your device, follow these instructions in reverse order.