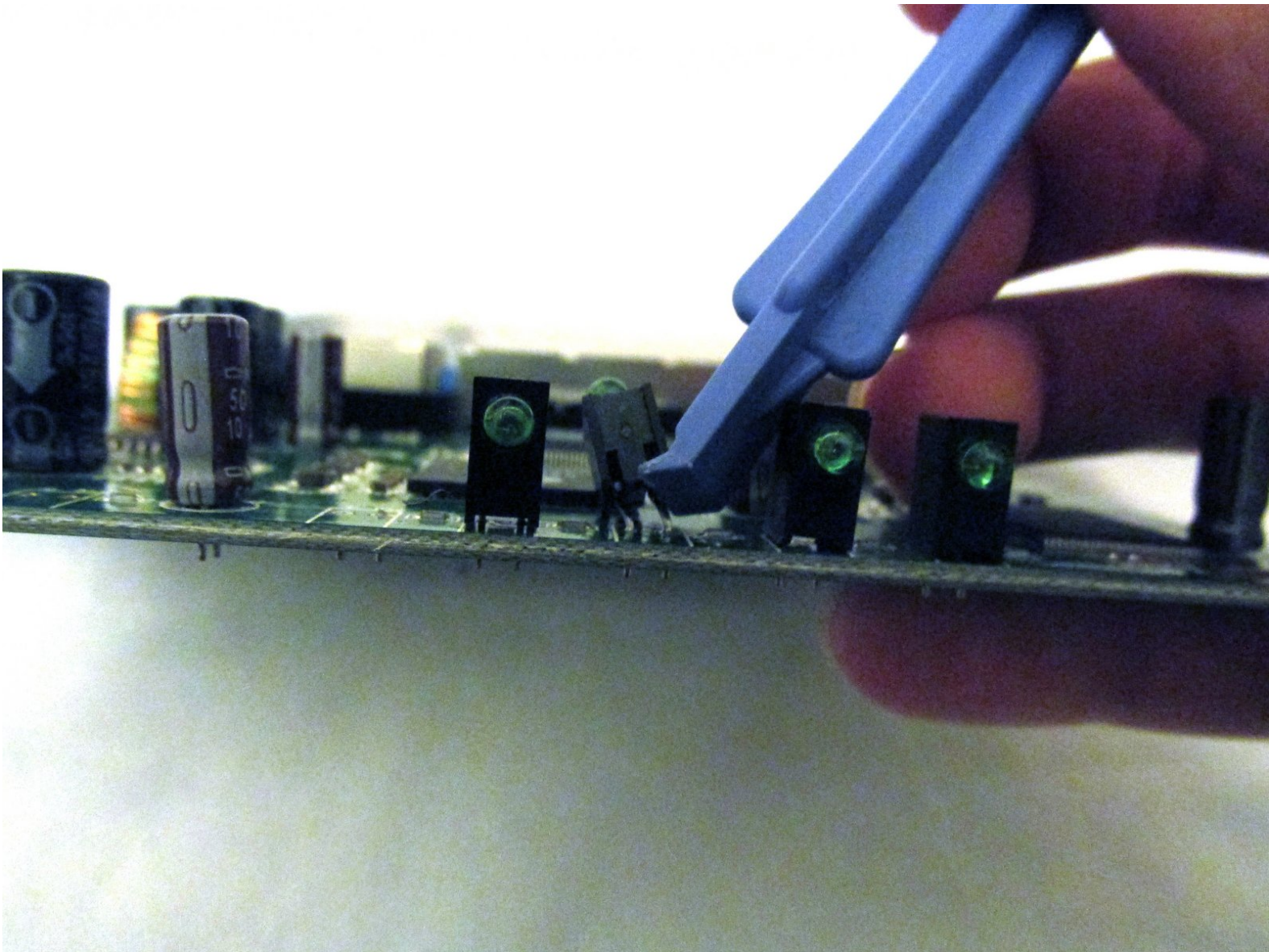




# D-Link EBR-2310 LED Light Replacement

This guide will provide a thorough explanation of how to replace the LED lights on the D-Link EBR-2310 wired router.

Written By: Jessica



---

## INTRODUCTION

LED lights are the lights on your device that turn on to send you different messages about the functioning of your electronic router. If the LED lights on your D-Link router are fading, inconsistent, or completely off at the power up of your device, replacement may be necessary. This step-by-step instructional guide will help you do just that.



### TOOLS:

- [iFixit Opening Tools](#) (1)
  - [Soft Cloth](#) (1)
  - [Tweezers](#) (1)
  - [Phillips #2 Screwdriver](#) (1)
-

## Step 1 — Remove Plastic Screw Coverings



- Begin by placing the wired router face down.
- Locate the two black plastic screw coverings at the top of the device and remove them with your fingers.
- ❗ The two bottom plastic screw coverings do not need to be taken off.

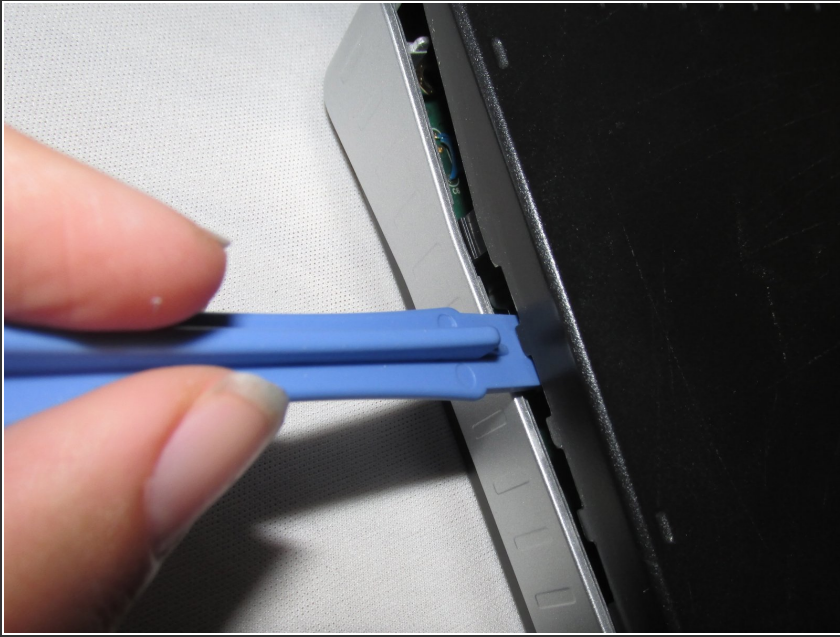
## Step 2 — Remove Screws



- Using a Philips PH2 screwdriver head, unscrew the two top screws.



### Step 3 — Pry Open The Router




- Using a plastic opening tool, trace the edges of the router on all sides. Gently pry the device until it eventually snaps open.

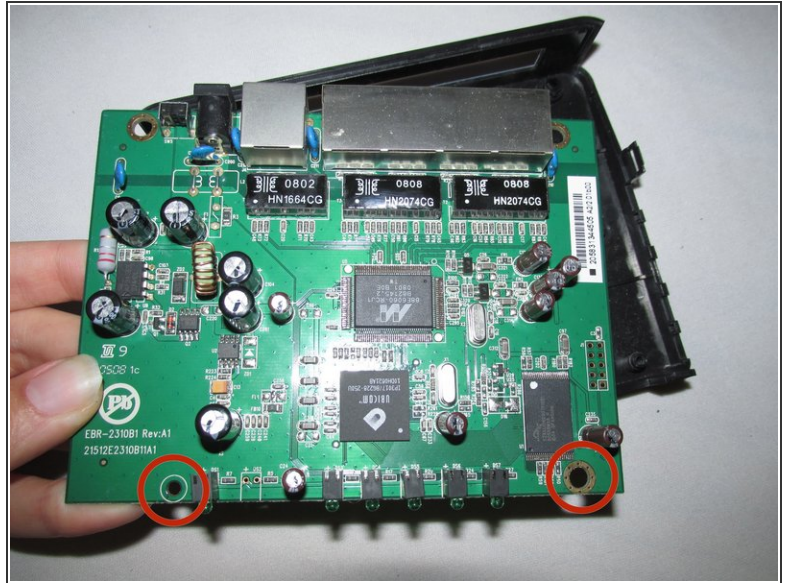
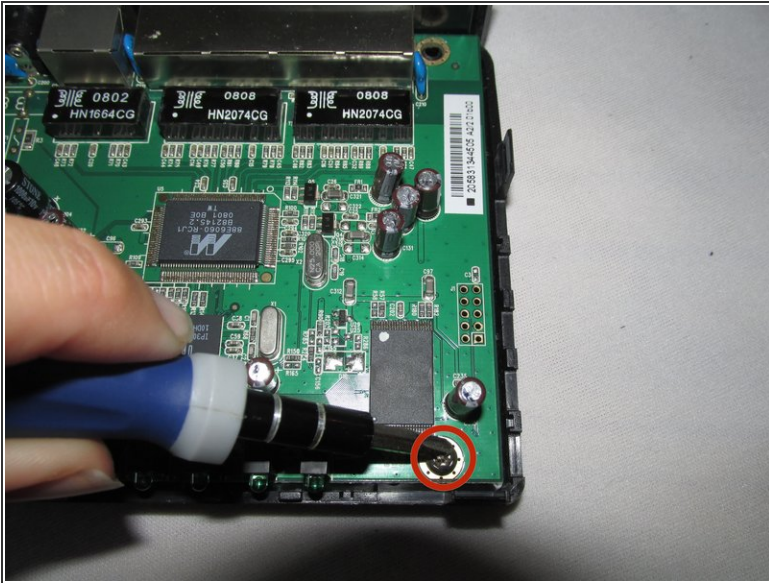
### Step 4 — Remove Silver Casing



- Once you have removed the top black case of the router, remove the silver casing surrounding the logic board.

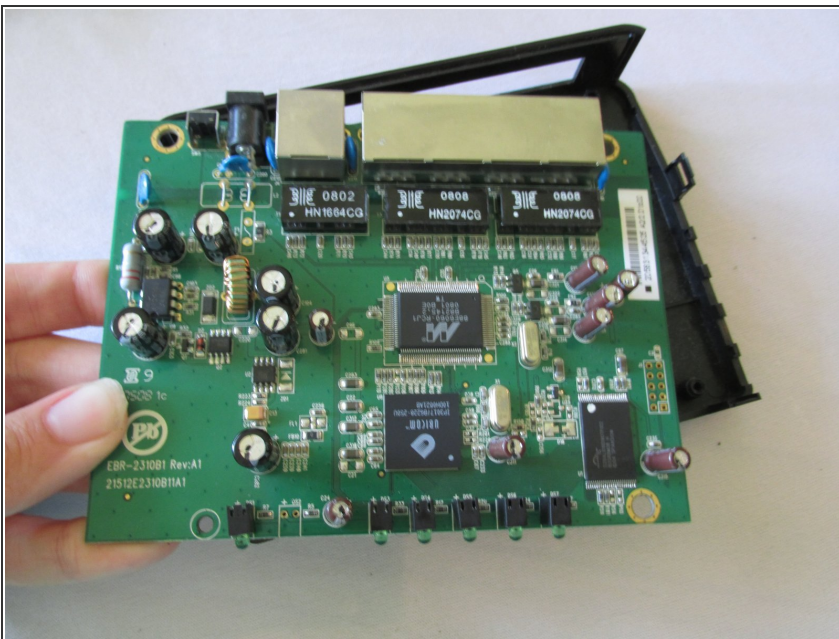
 It should easily snap out of place.

## Step 5 — Remove Inner Bottom Screws



- Locate the two screws at the bottom of the logic board.
- Using the same PH2 head on your Philips screwdriver, unscrew these screws.

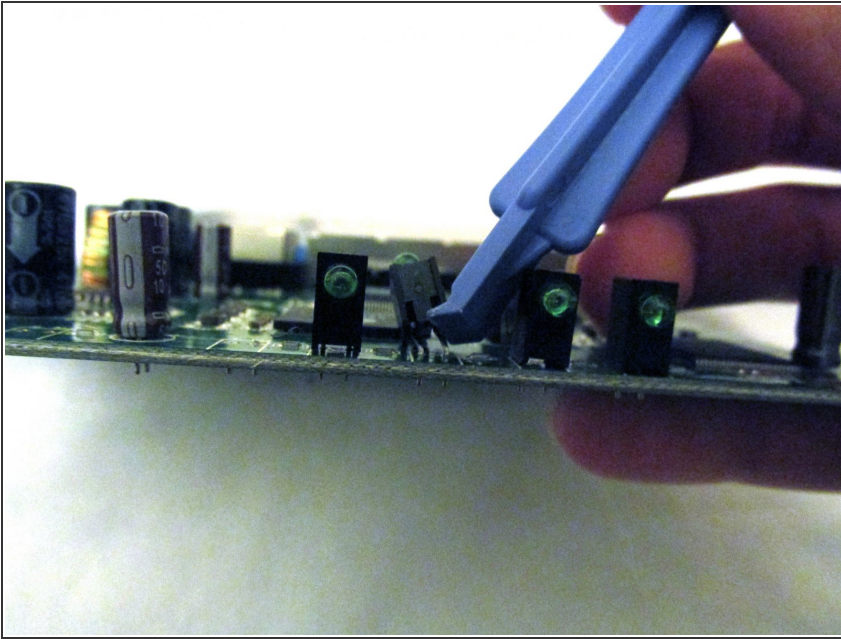
## Step 6 — Remove Bottom Case



- Now that you have removed all screws and the surrounding silver casing, pop the logic board out from the bottom component of the router.
- You have now removed the logic board from your device.

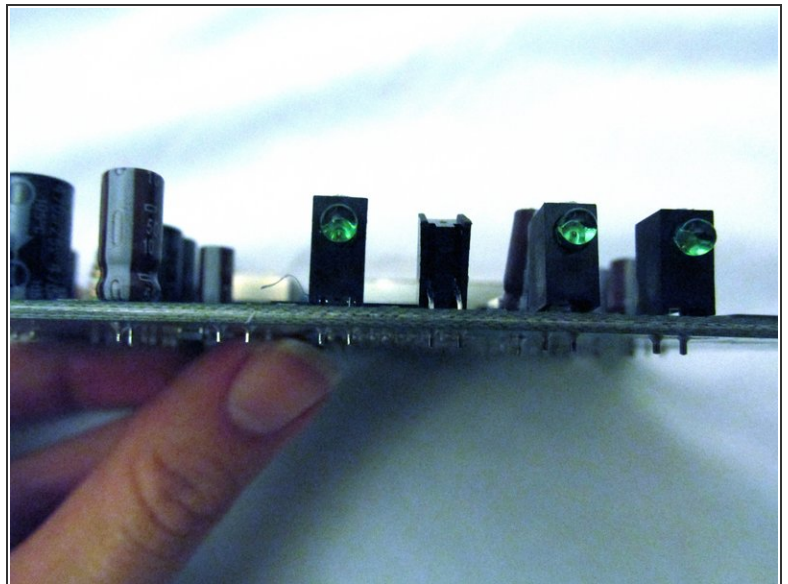
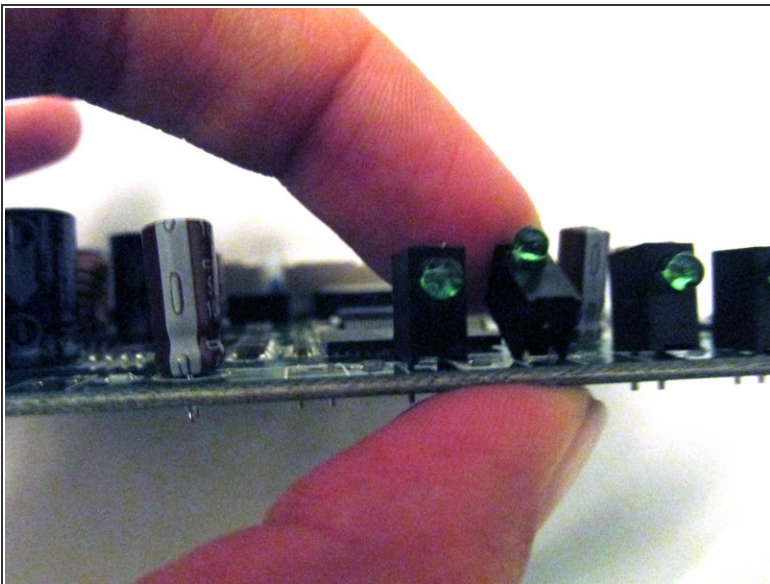


## Step 7 — Locate Problematic LED light



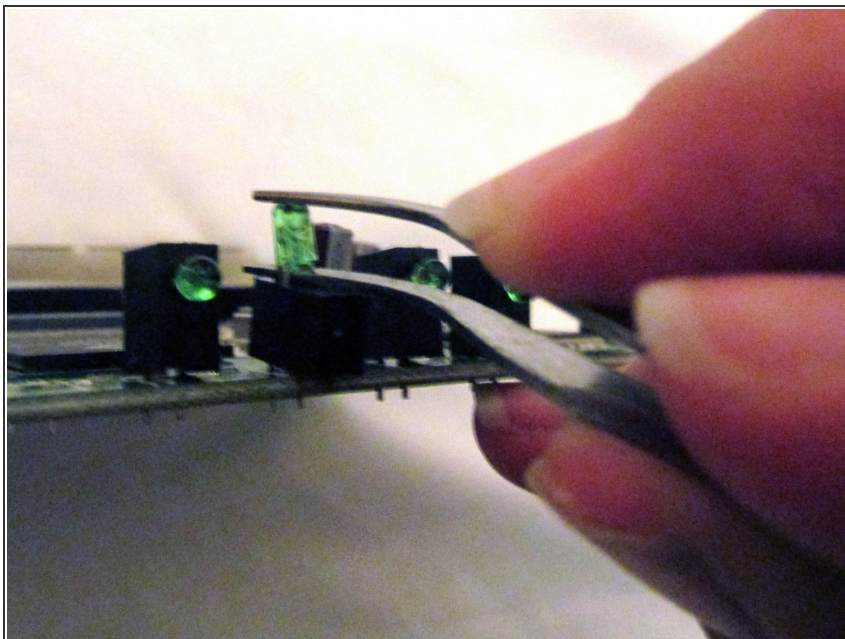
- Locate the problematic LED light on the motherboard.
- Using a plastic opening tool, very gently tilt its black base backwards.

## Step 8 — Continue Readjusting LED Light Base



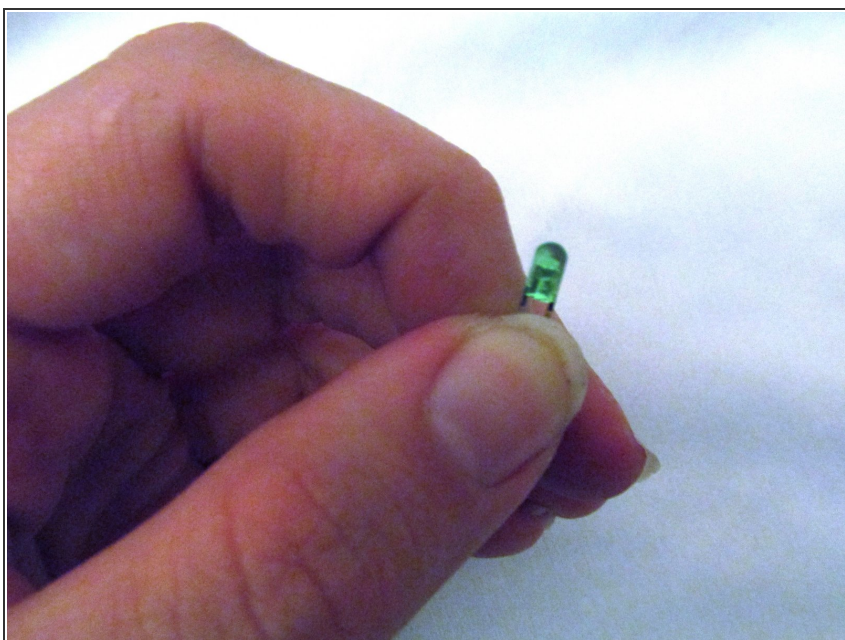
- Using your soft finger, tilt the LED light base backwards so that the actual light is facing upside down, at a 180 degree angle from the others.

## Step 9 — Remove the LED Light



- With a pair of tweezers, gently pry the LED light back and forth between its connecting wires until it is able to be removed.

## Step 10 — Complete Removal



- You should now have a removed LED light, ready to be replaced with a new one.

To reassemble your device, follow these instructions in reverse order.