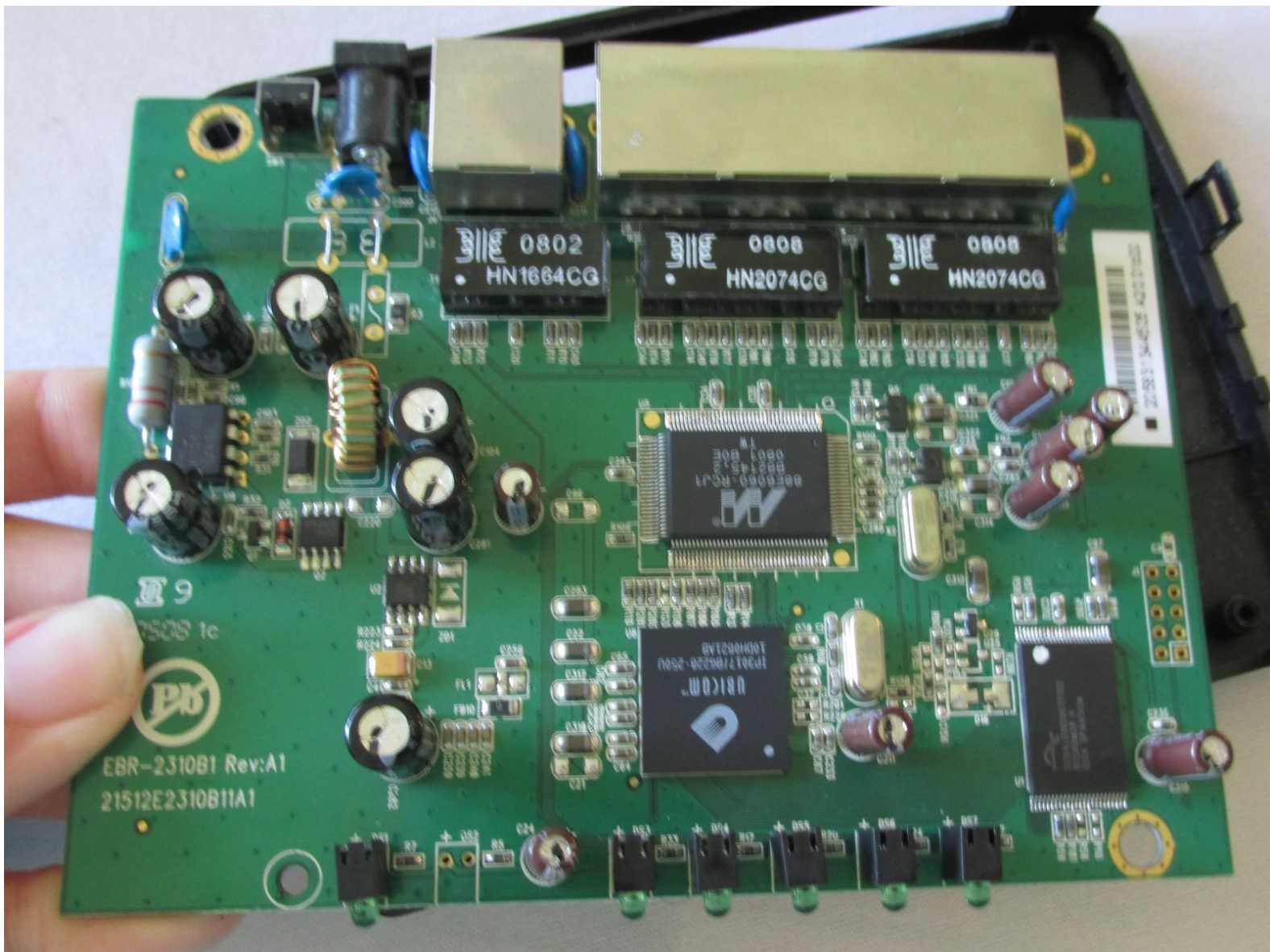




D-Link EBR-2310 Motherboard Replacement

This guide provides step-by-step instructions for the replacement of a D-Link EBR-2310 broadband router motherboard.

Written By: Jessica



INTRODUCTION

The motherboard is the internal component of your router that performs all basic functioning. It is the most important part of your device. If your device is non operational, your motherboard most likely needs to be replaced. Follow this guide for instructions on how to do so.



TOOLS:

- [iFixit Opening Tools](#) (1)
 - [Phillips #2 Screwdriver](#) (1)
-

Step 1 — Remove Plastic Screw Coverings



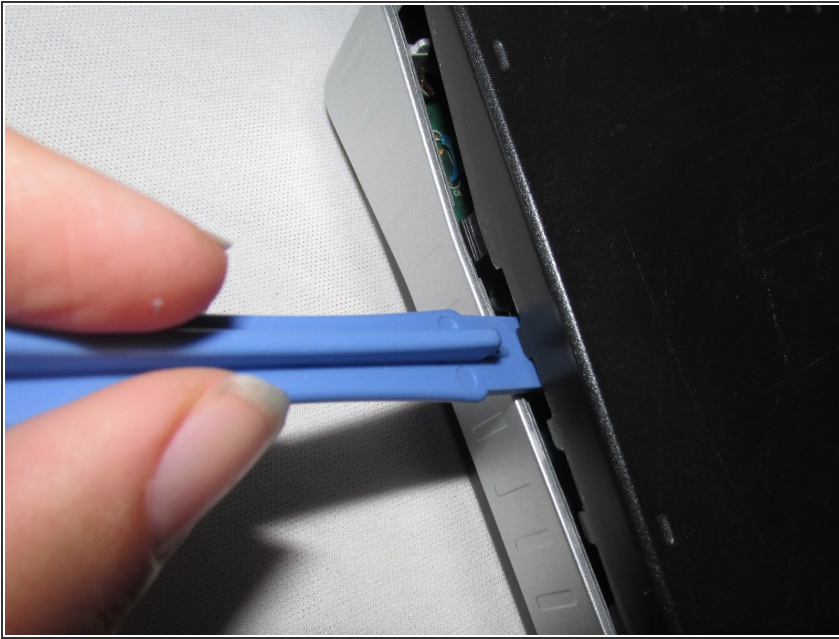
- Begin by placing the wired router face down.
 - Locate the two black plastic screw coverings at the top of the device and remove them with your fingers.
- i** The two bottom plastic screw coverings do not need to be taken off.

Step 2 — Remove Screws



- Using a Philips PH2 screwdriver head, unscrew the two top screws.

Step 3 — Pry Open The Router




- Using a plastic opening tool, trace the edges of the router on all sides. Gently pry the device until it eventually snaps open.

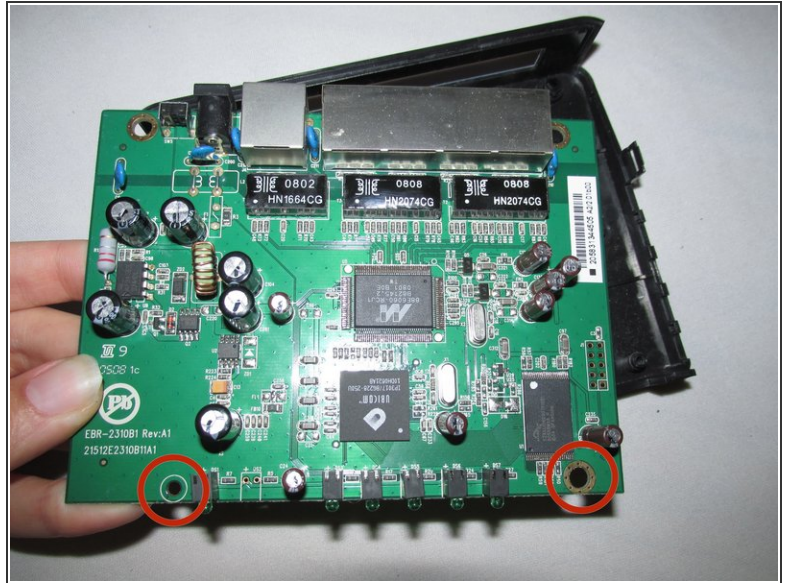
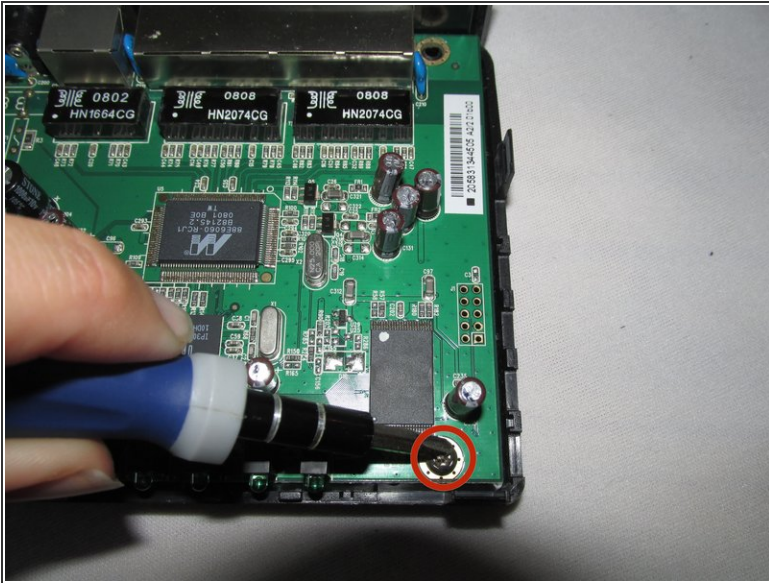
Step 4 — Remove Silver Casing



- Once you have removed the top black case of the router, remove the silver casing surrounding the logic board.

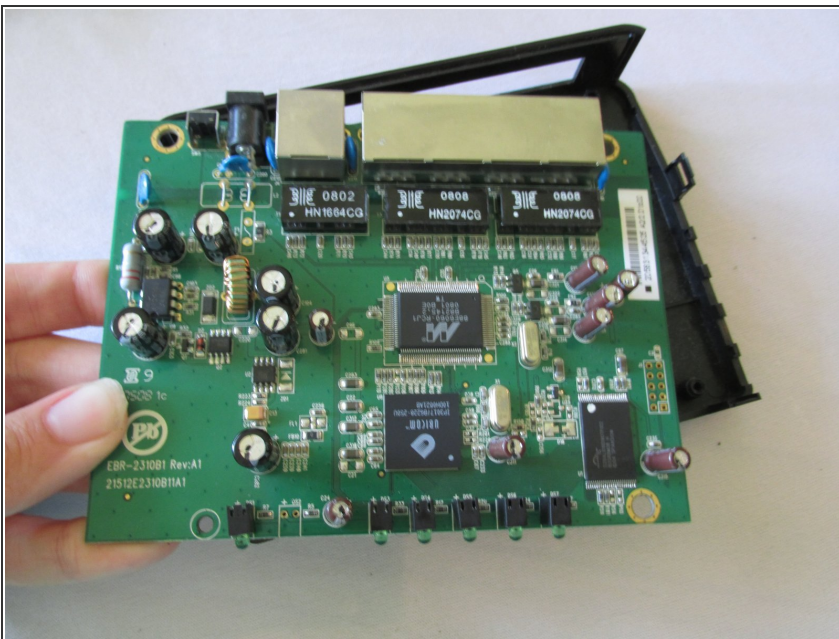
 It should easily snap out of place.

Step 5 — Remove Inner Bottom Screws



- Locate the two screws at the bottom of the logic board.
- Using the same PH2 head on your Philips screwdriver, unscrew these screws.

Step 6 — Remove Bottom Case



- Now that you have removed all screws and the surrounding silver casing, pop the logic board out from the bottom component of the router.
- You have now removed the logic board from your device.

To reassemble your device, follow these instructions in reverse order.