



D-Link EBR-2310 disassembly for cleaning

This guide explains how to maintain a D-Link EBR-2310 wired router through internal cleaning and other important forms of maintenance.

Written By: Jessica



INTRODUCTION

Over time, dust and dirt particles may accumulate inside of your D-Link router. This is a guide that shows you how to maintain your router through a process of internal cleaning and other maintenance tricks.



TOOLS:

- [iFixit Opening Tools](#) (1)
 - [Soft Cloth](#) (1)
 - [Phillips #2 Screwdriver](#) (1)
-

Step 1 — Remove Plastic Screw Coverings



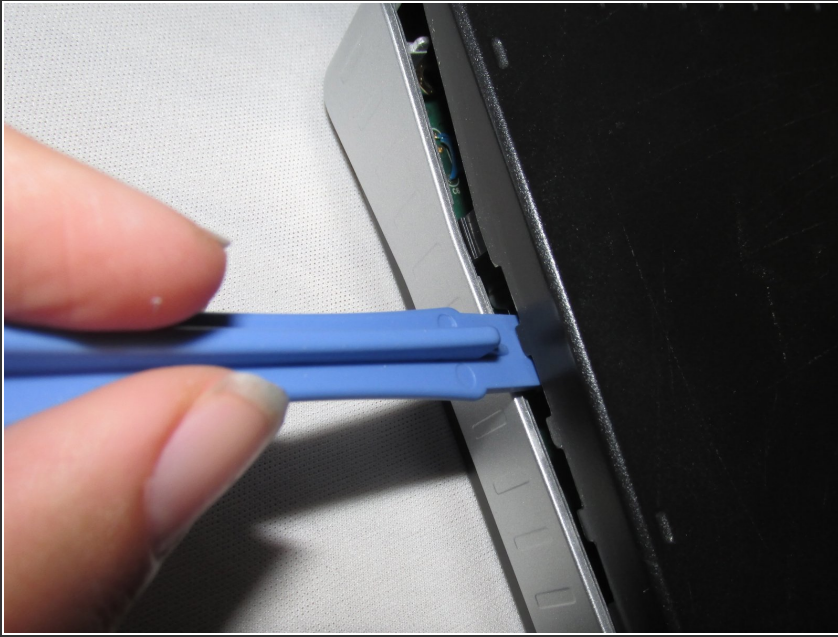
- Begin by placing the wired router face down.
- Locate the two black plastic screw coverings at the top of the device and remove them with your fingers.
- ❗ The two bottom plastic screw coverings do not need to be taken off.

Step 2 — Remove Screws



- Using a Philips PH2 screwdriver head, unscrew the two top screws.

Step 3 — Pry Open The Router




- Using a plastic opening tool, trace the edges of the router on all sides. Gently pry the device until it eventually snaps open.

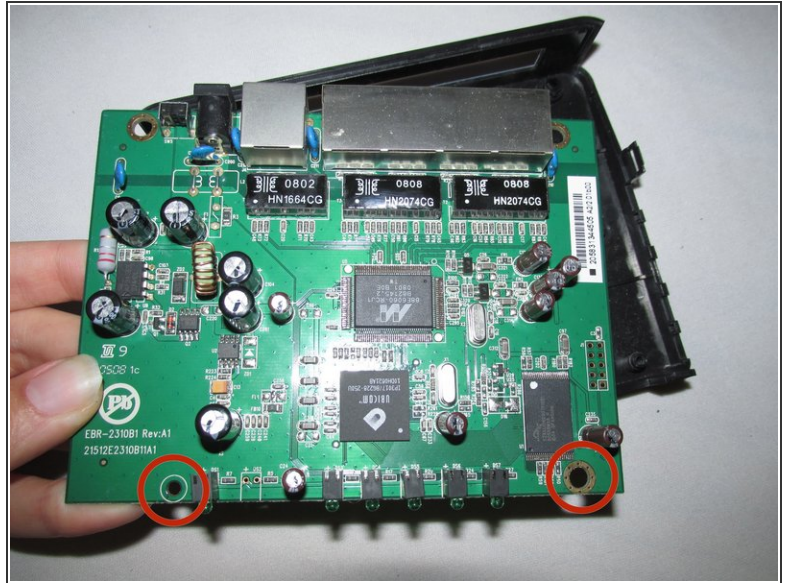
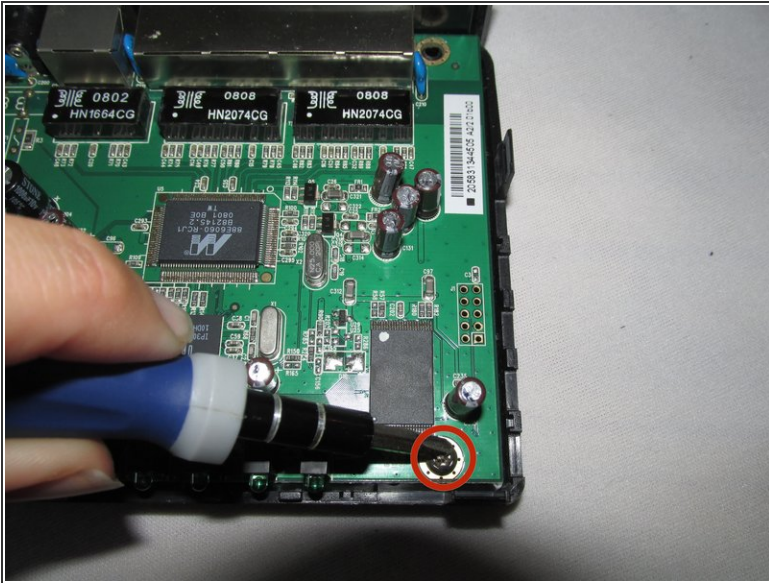
Step 4 — Remove Silver Casing



- Once you have removed the top black case of the router, remove the silver casing surrounding the logic board.

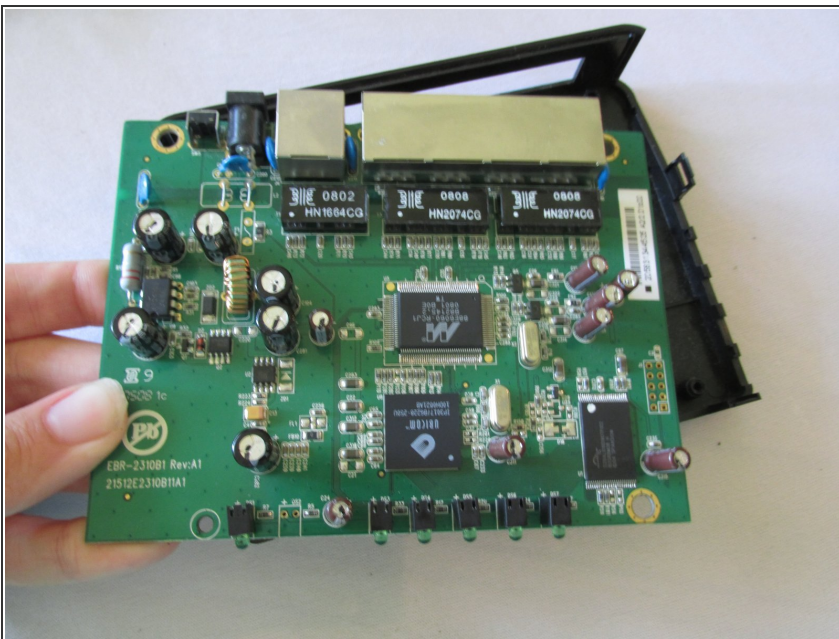
 It should easily snap out of place.

Step 5 — Remove Inner Bottom Screws



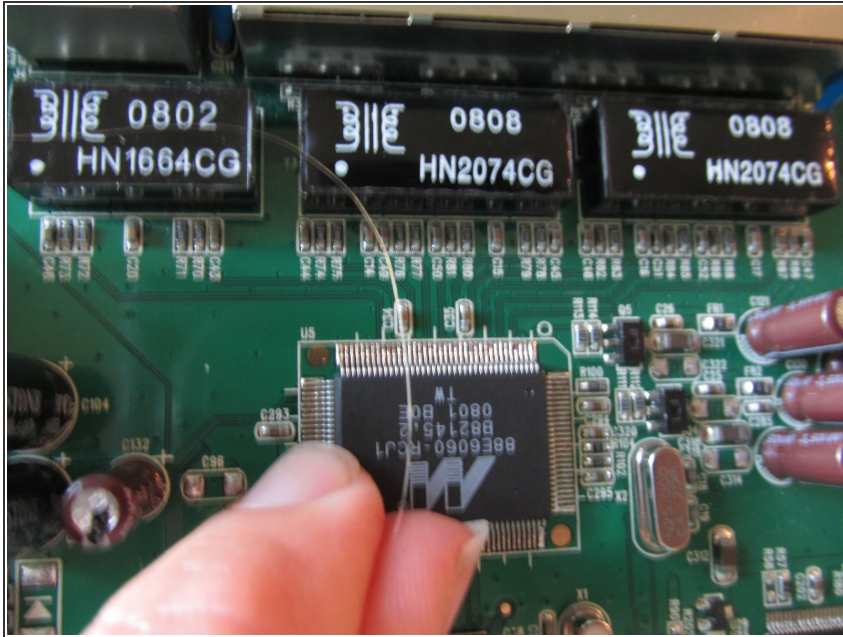
- Locate the two screws at the bottom of the logic board.
- Using the same PH2 head on your Philips screwdriver, unscrew these screws.

Step 6 — Remove Bottom Case



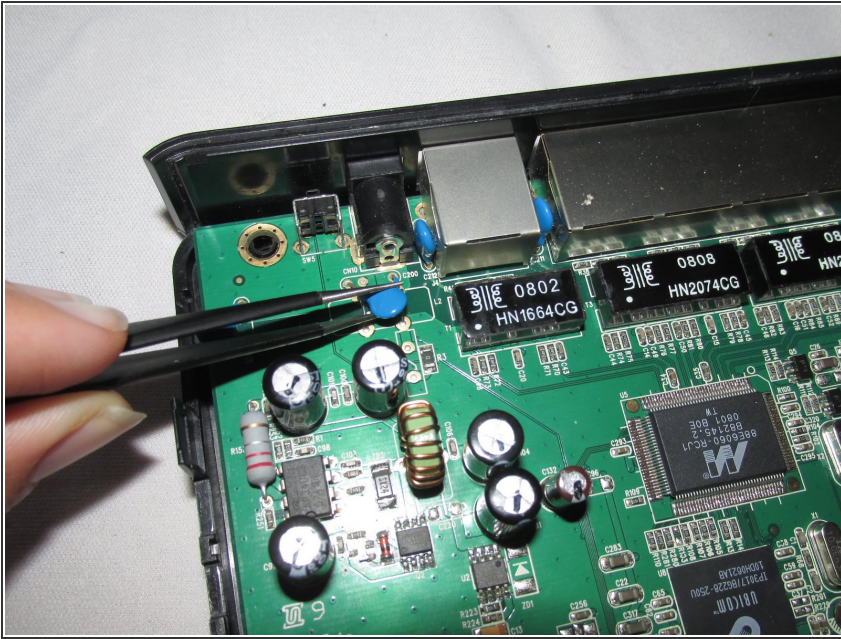
- Now that you have removed all screws and the surrounding silver casing, pop the logic board out from the bottom component of the router.
- You have now removed the logic board from your device.

Step 7 — Remove Dust Particles



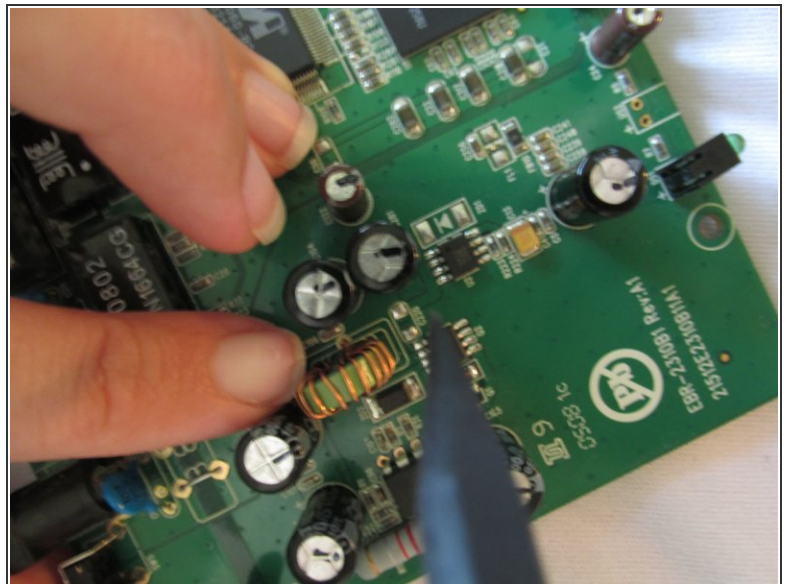
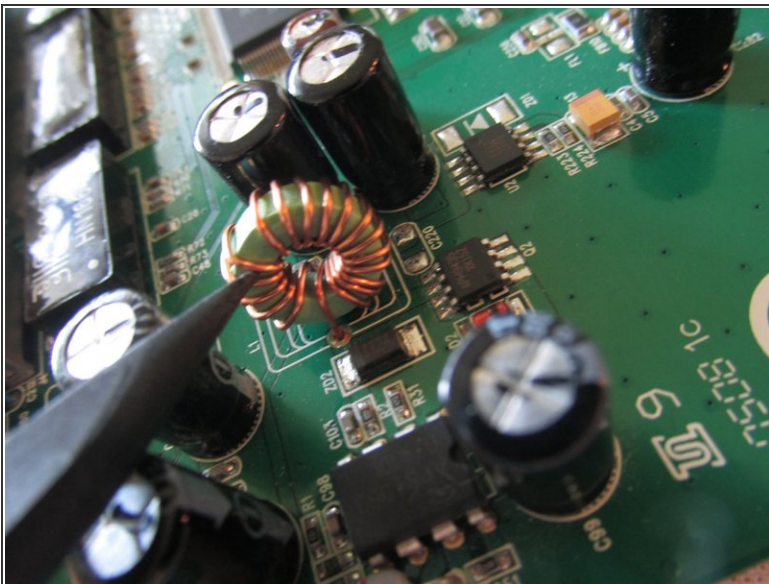
- Once you have completely removed your logic board from its casing, look for any large dust particles and/or other dirt inside the router. Gently remove these particles with your fingers.

Step 8 — Maintain Blue Rubber Coverings



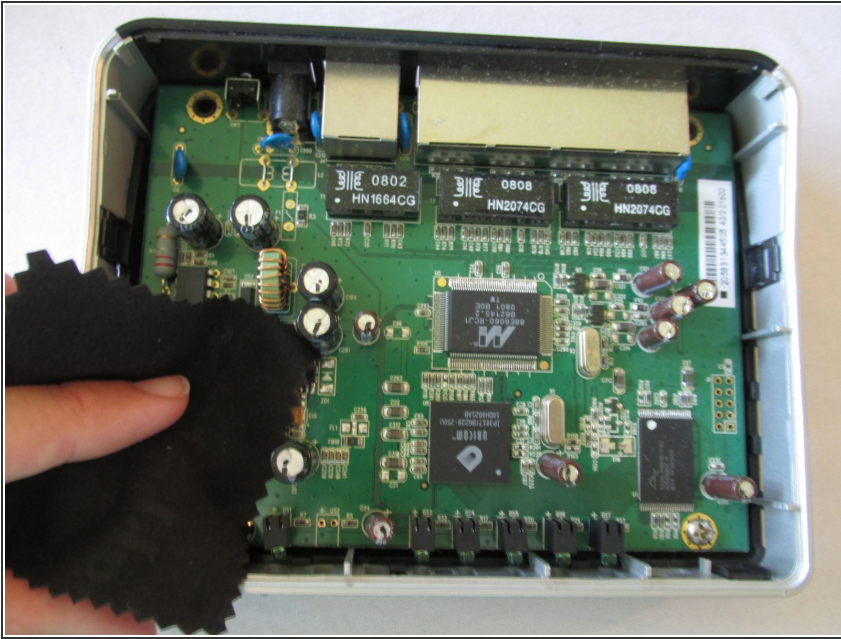
- Locate the blue rubber wire coverings near the main cable connections of your motherboard. Make sure that these are standing upright.
- If they are not, gently use your wire tweezers to rearrange them in the correct upright position.

Step 9 — Wire Tube



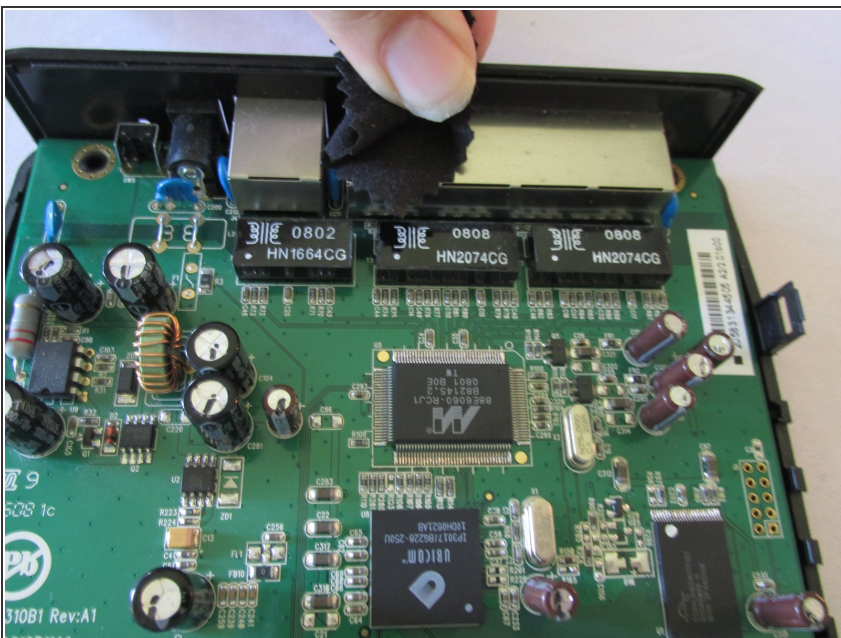
- Locate the upright wire tube towards the middle left of the motherboard.
- Make sure that the wires are evenly spaced, not directly touching one another on the tube.
- If the wires are not evenly spaced, gently use your spudger tool to separate them.

Step 10 — Wipe The Top Side of the Logic Board



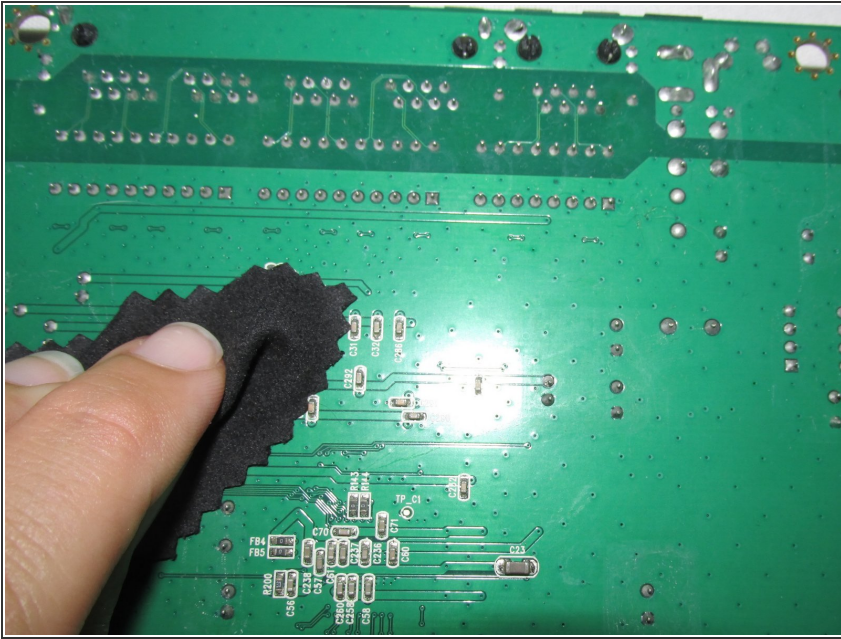
- Using a soft cloth, gently wipe the top side of the motherboard.
- Be sure not to miss any small crevices.

Step 11 — Wipe Dust From Metal Slates



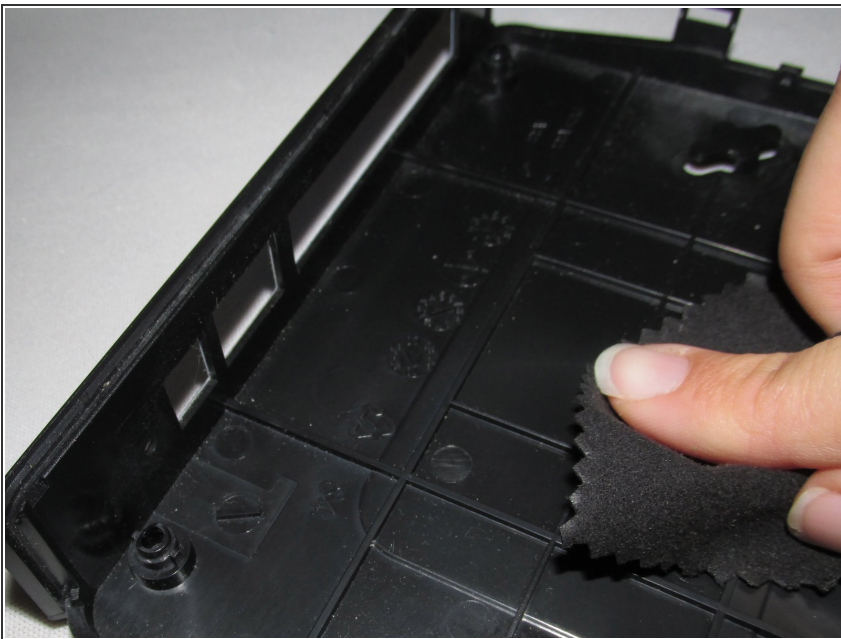
- Using your cloth, gently wipe the metal slates around the cable connectors.

Step 12 — Wipe The Back Side of the Logic Board



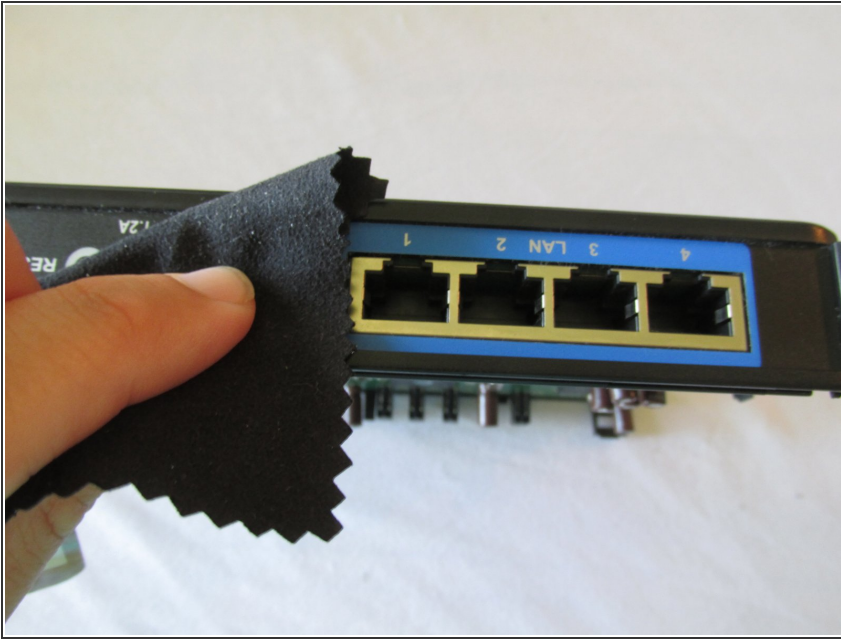
- Turn the motherboard on its back side and completely wipe away any small particles.

Step 13 — Wipe The Outer Cases



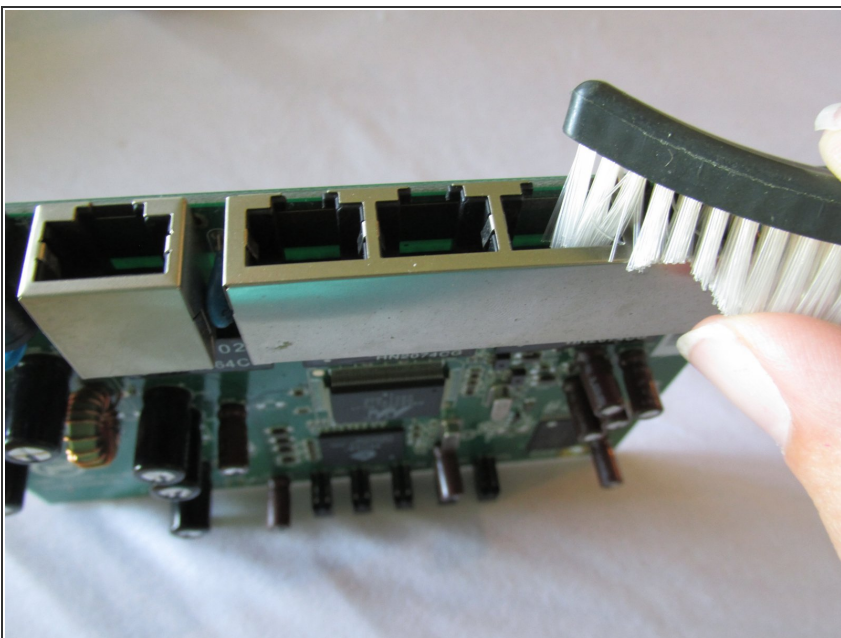
- Fully wipe the top and bottom cases of the router.
- ⓘ Dust easily gets stuck in these areas, especially the bottom case.

Step 14 — Wiping The Cable Compartments



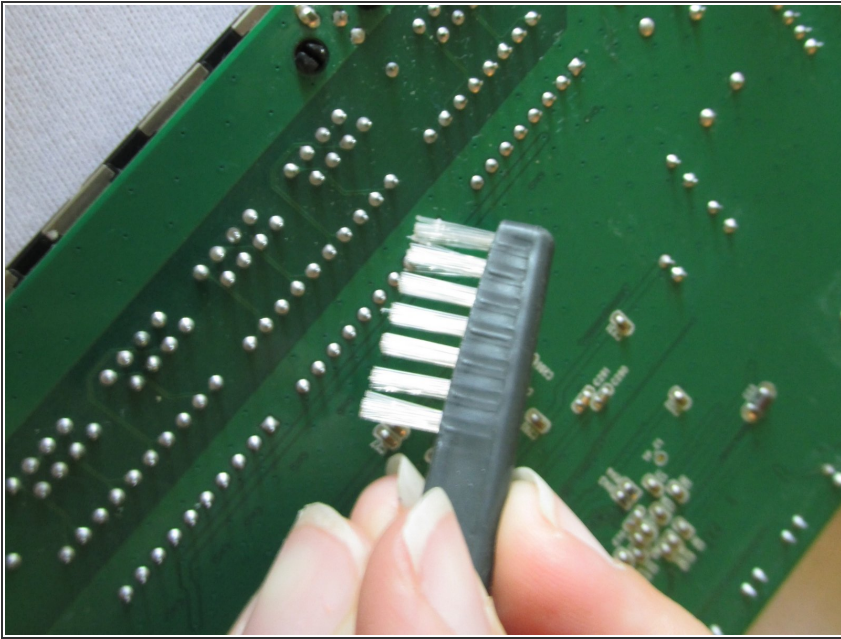
- Wipe the cable connector compartments using the same soft cloth.

Step 15 — Deep Cleaning of Cable Compartments



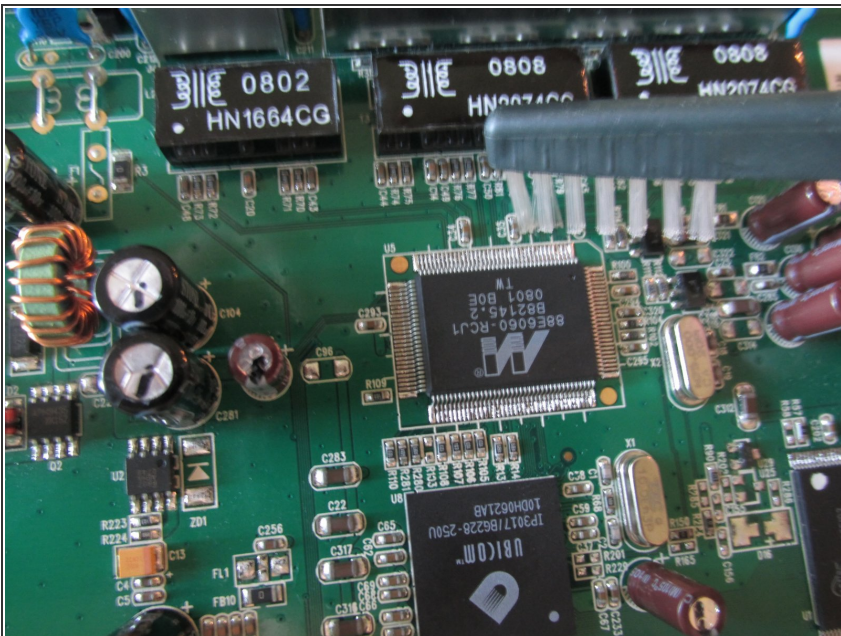
- Using a soft bristle toothbrush, brush the insides of the cable connectors in order to remove any hard-to-reach dust.

Step 16 — Brush the Logic Board



- Using the same toothbrush, brush the tiny crevices on the back side of the motherboard.

Step 17 — Continue Brushing the Logic Board



- After you have thoroughly brushed the back side of the motherboard, begin to do the same with the front side.
- You have now cleaned the inside of your router. Ventilation and performance should be excellent.

To reassemble your device, follow these instructions in reverse order.