



D-Link HD Wi-Fi Camera Camera Lens Replacement

This guide will help you remove a faulty camera lens and replace it.

Written By: Morgen Jaques



INTRODUCTION

This guide is going to show how to take apart a D-Link DCS 936L Wi-Fi security camera and remove the camera lens using a Phillips #00 screwdriver and an opening tool. Don't fear! This is fairly simple once you get started. As long as you are careful not to strip the screws, it should only take a few minutes.



TOOLS:

- [Phillips #00 Screwdriver](#) (1)
 - [iFixit Opening Tools](#) (1)
-

Step 1 — Motherboard



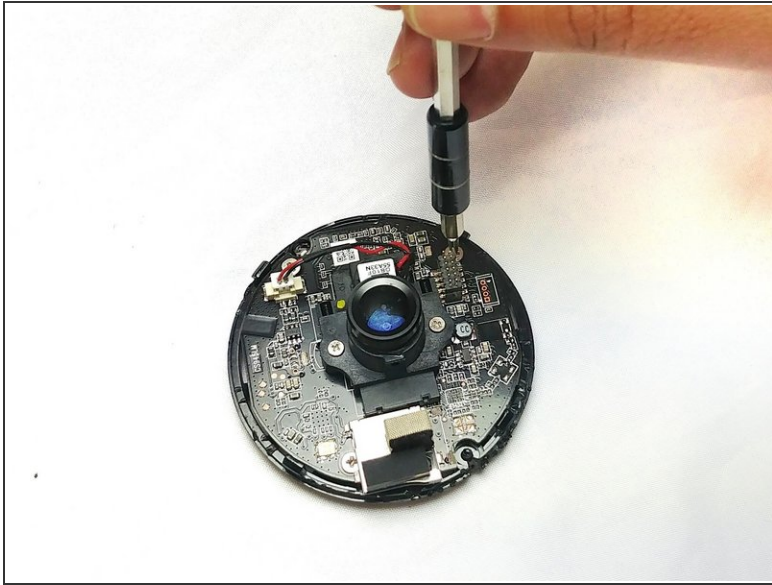
- Place the camera upwards between your thumb and first finger.
- Tilt the camera to the best position and loosen the captive linings using a plastic opening tool.
- Slide the top cover outwards to separate the upper section from the lower lid using the plastic opening tool.

Step 2



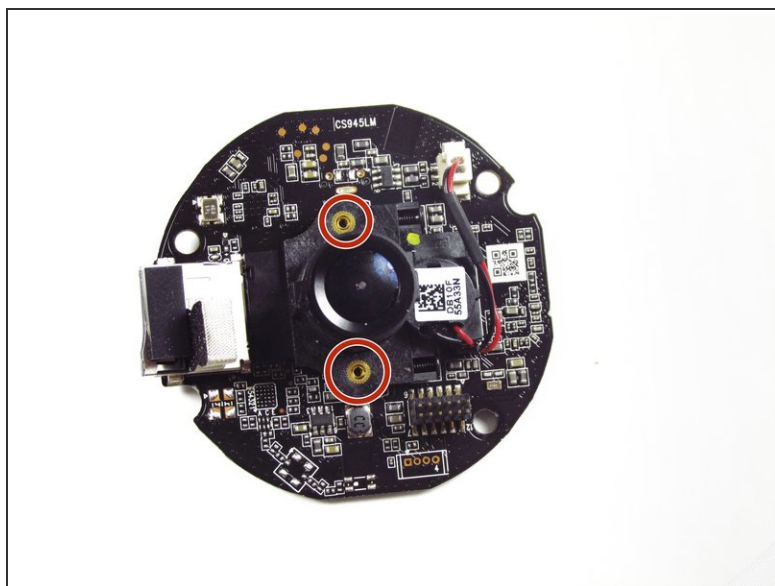
- Remove the 6.0mm Phillips #00 screws that secure the back cover to the inner frame.
- Lift the rear lid upwards using your fingers and separate it from the internal components and motherboard.


Step 3



- Unscrew the motherboard from the frame. There are 3 Phillips #00 5.0mm screws holding it in place.
- Then (gently!) remove the motherboard and the lens with your fingers.

Step 4 — Camera Lens



 Make sure your hands are dry and you are working in a dry area. To prevent damage, do not touch the lens.

- There are two Phillips #00 6.0mm screws keeping the camera in place. Remove the screws first.
- Gently unplug the camera from the motherboard, and remove the camera.

To reassemble your device, follow these instructions in reverse order.