



# DBPOWER RD-810 Power Supply Switch Replacement

Replace a faulty Power Supply Switch.

Written By: John Russell



---

## INTRODUCTION

The power supply switch turns power to the projector on and off. If the projector is not turning on, the power supply switch may need to be replaced.

---

### TOOLS:

- [Phillips #2 Screwdriver](#) (1)
  - [Phillips 3 Screwdriver](#) (1)
  - [Spudger](#) (1)
-

## Step 1 — Top Cover



- ❗ Make sure the projector is unplugged before starting
- Place the projector upside down to access the screws on the bottom.
- Remove the five 7mm long screws using a #3 Phillips screwdriver at least 2 inches long.

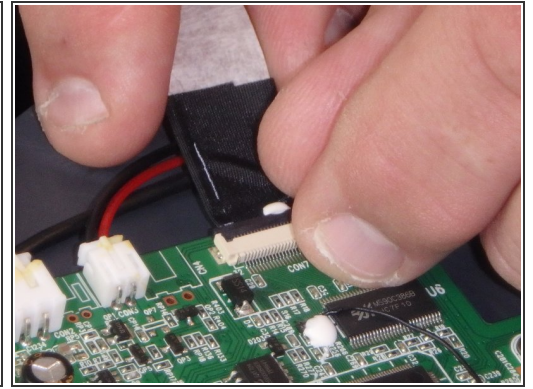
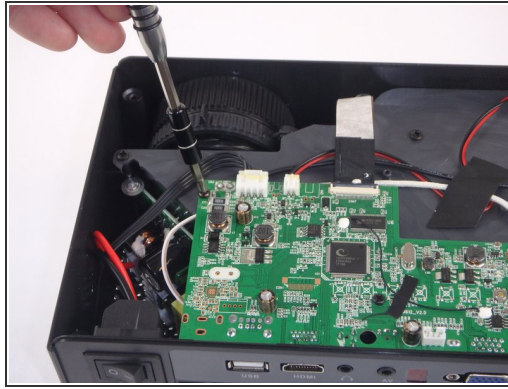
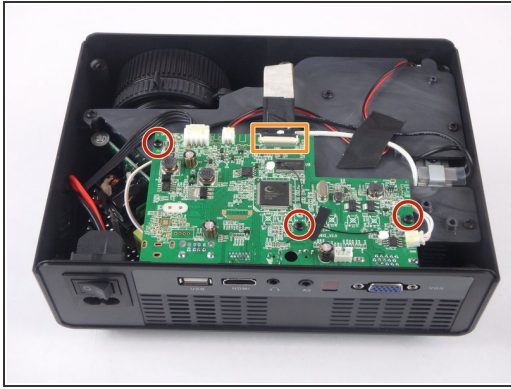
## Step 2



- Flip the projector over and then remove the cover by lifting it up.

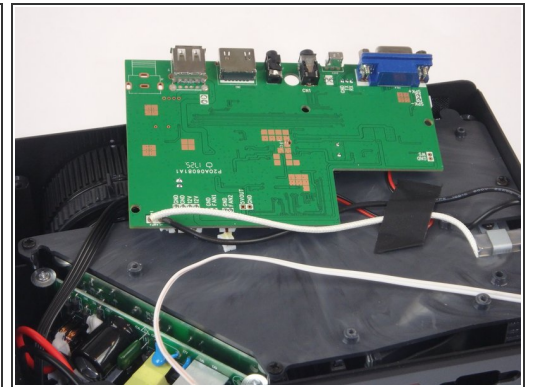
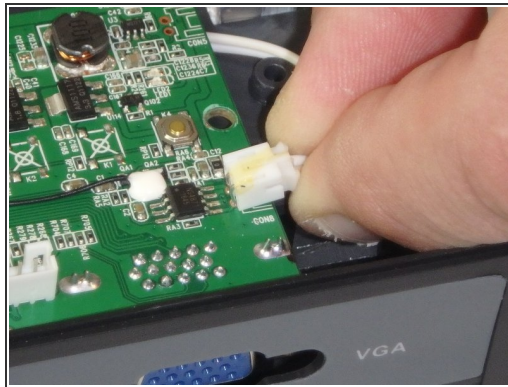
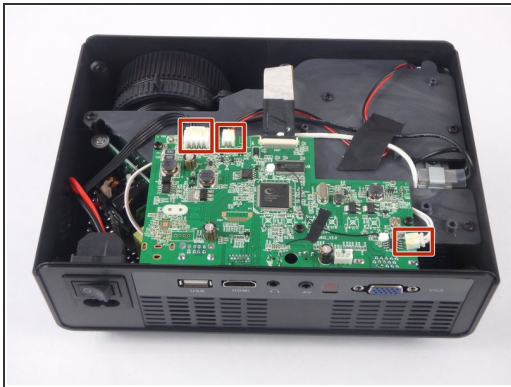


## Step 3 — Motherboard and LED Bulb



- Remove the three 6mm PH2 phillips head screws.
- Disconnect the ribbon cable by flipping up the latch on the connector and then pull the ribbon out.

## Step 4



- Disconnect the three wire connectors. Grasp both sides of the connector and pull apart.
- ⓘ Keep the connector parallel to the mother board to avoid breaking the solder connection.
- Lift the motherboard up and place it out of the way.

## Step 5



- Remove the five 7mm PH2 phillips head screws on the black plate and lift the plate out.
- Lift the aluminum heat sink up to remove it from the projector.
- ⓘ The motherboard is already removed in this step.

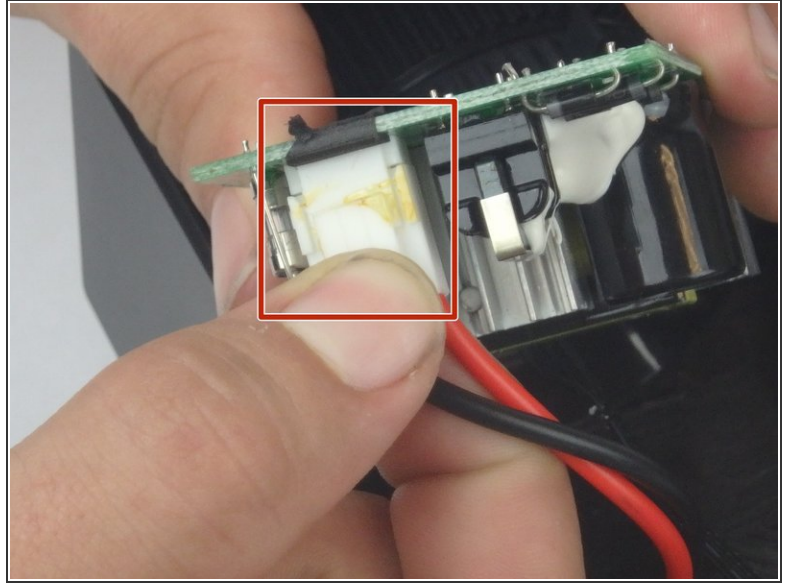
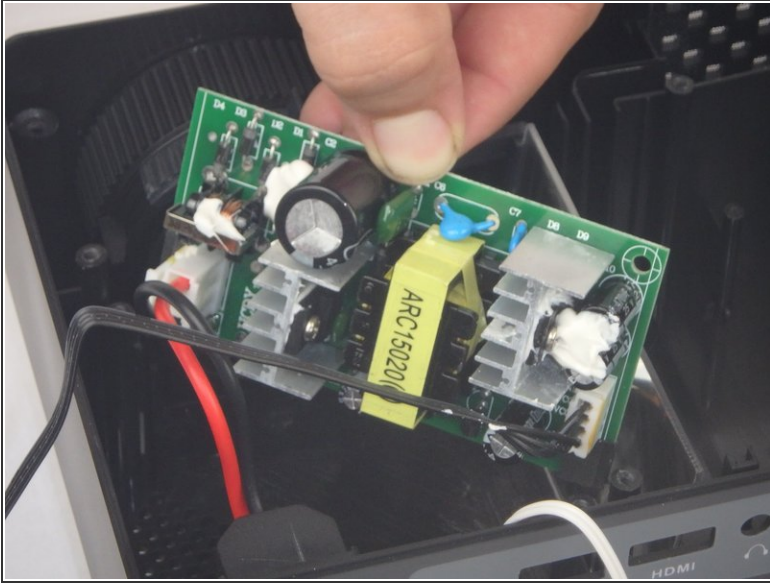
## Step 6 — Power Supply Circuit



- Remove the two 9mm PH2 phillips head screws.
- Lift the mirror behind the power supply circuit out to gain access to the circuit board.

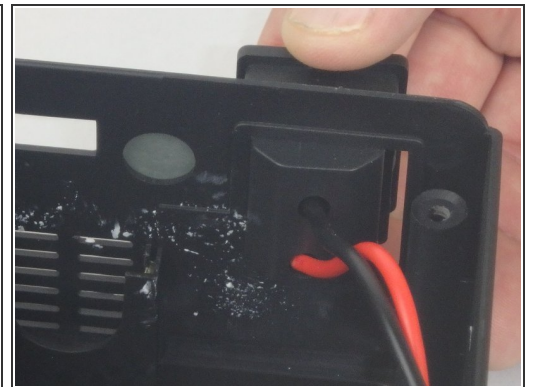
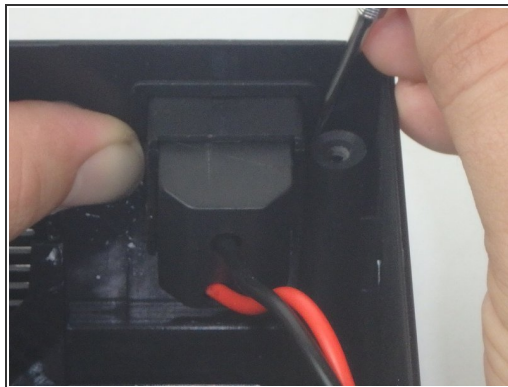
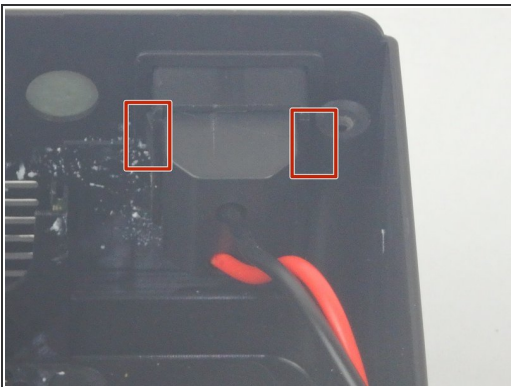


## Step 7



- Lift the power supply circuit board out of the projector.
- Disconnect the cable connector by pulling the two sides of the connector apart.
- ⓘ Keep the connector parallel to the circuit board to avoid breaking the solder connection.

## Step 8 — Power Supply Switch



- Using the small plastic splunger, press in on the two latches on the sides of the power supply switch, then push it out of the case.

To reassemble your device, follow these instructions in reverse order.