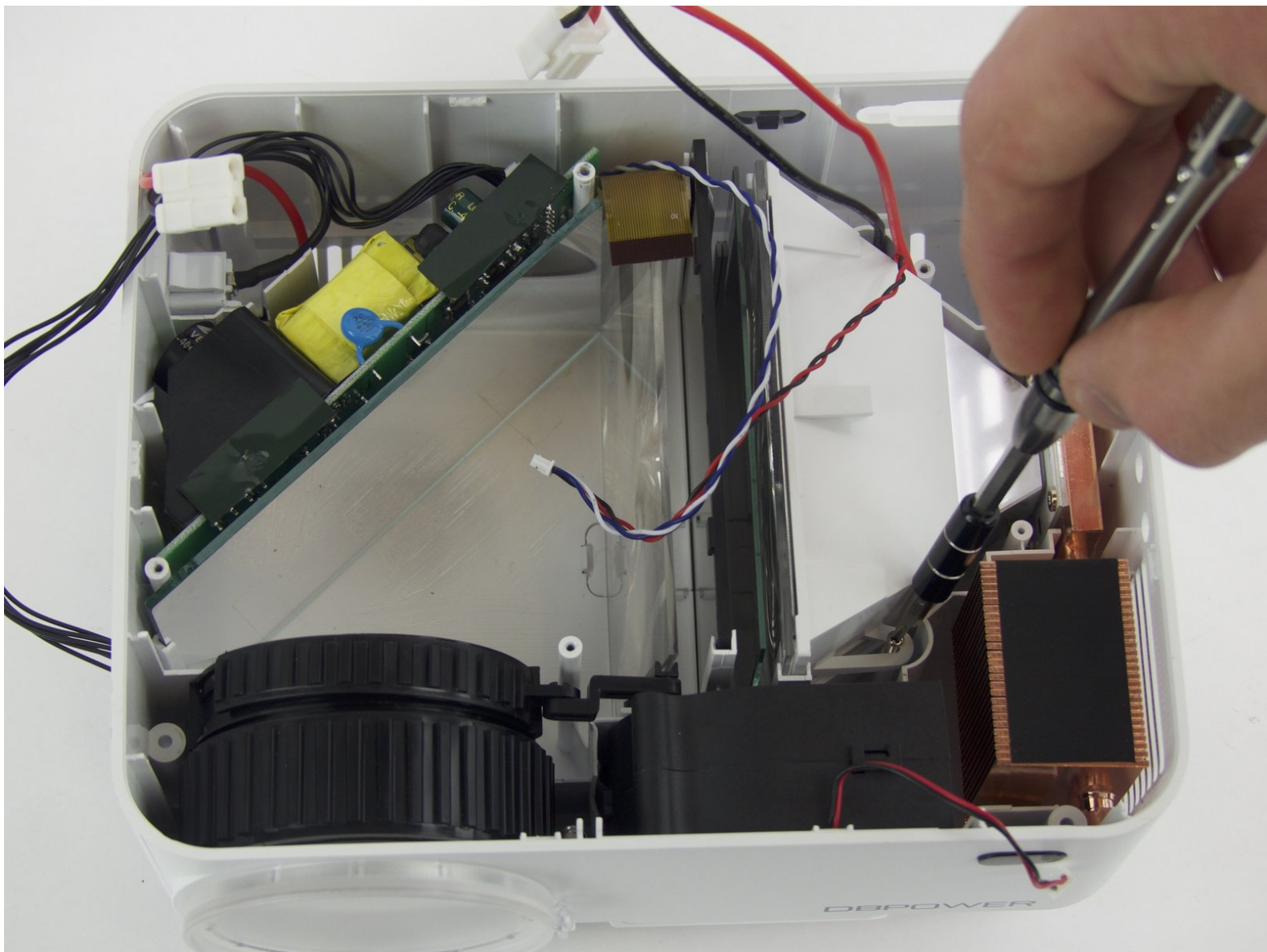




DBPOWER T20 Lamp Replacement

If you are noticing bad image quality you may need to replace the lamp. This guide will help you access the lamp in the projector for easy replacement.

Written By: Andrea Espinosa



INTRODUCTION

Simply pull the lamp out once you remove the screws. This should not require much force so if the lamp is not coming out, make sure you took out all the screws in the steps leading up to the removal.

TOOLS:

- [Spudger](#) (1)
 - [Phillips #0 Screwdriver](#) (1)
 - [Phillips #2 Screwdriver](#) (1)
-

Step 1 — DBPOWER T20 Disassembly



- Flip the device and lay flat.

Step 2



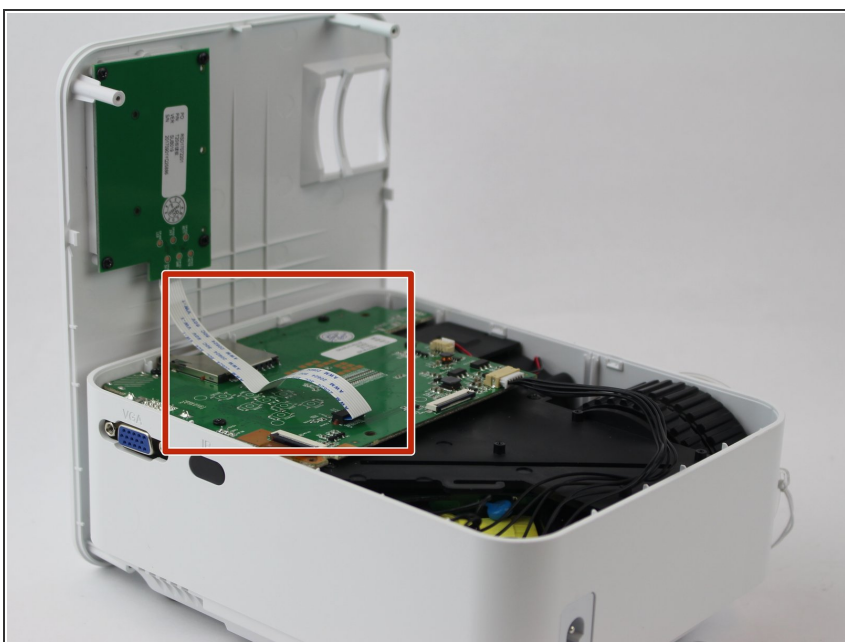
- Remove the four (9 mm) screws with a PH2 screwdriver.
- Remove the two (7 mm) located with a PH2 screwdriver.

Step 3



- Flip the device over and pry the top off with a plastic opening tool.

Step 4



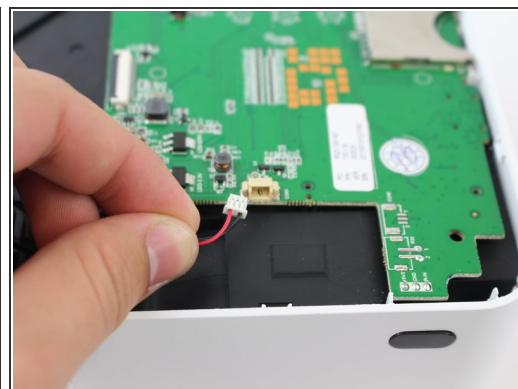
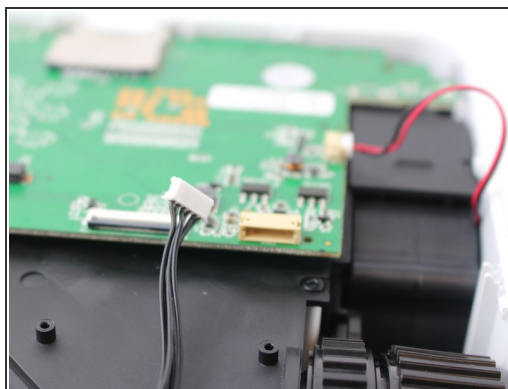
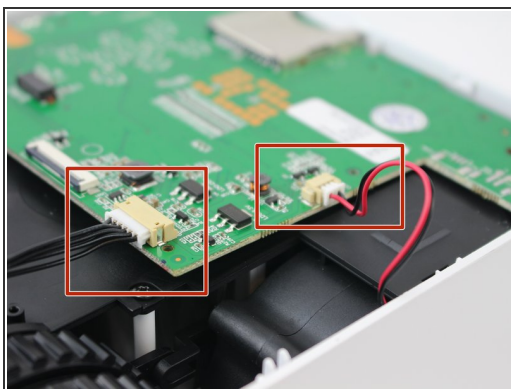
- Remove the ribbon cable connecting the motherboard to the button control board by gently pulling it from its connector.

Step 5



- Remove four (6 mm) screws connecting the motherboard using a J0 screwdriver.

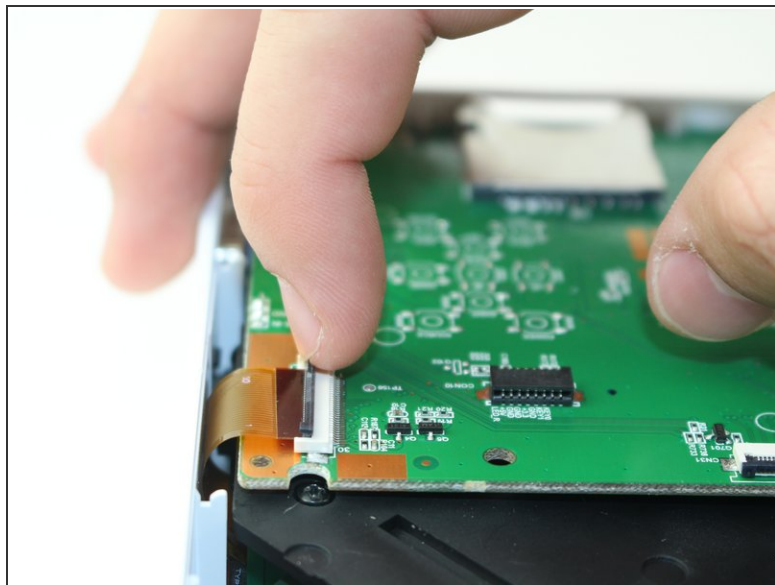
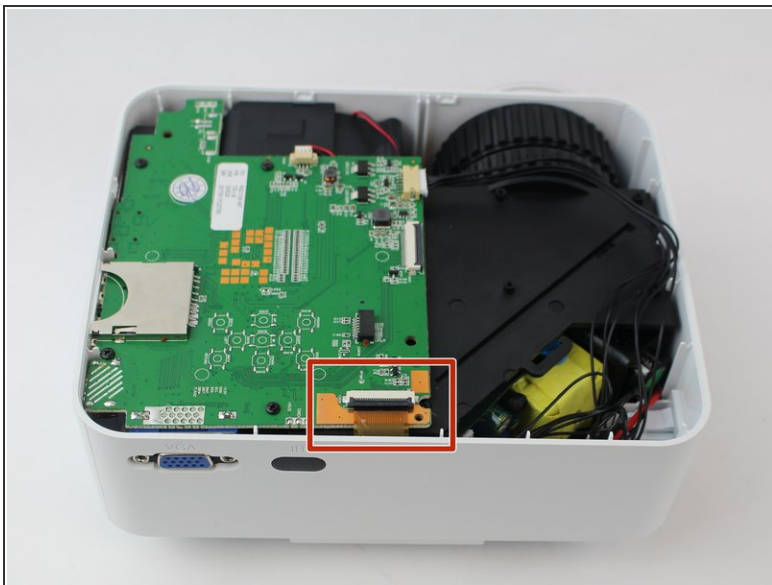
Step 6



- Remove the two cables connected to the motherboard: black power cable and the red/black fan cable.

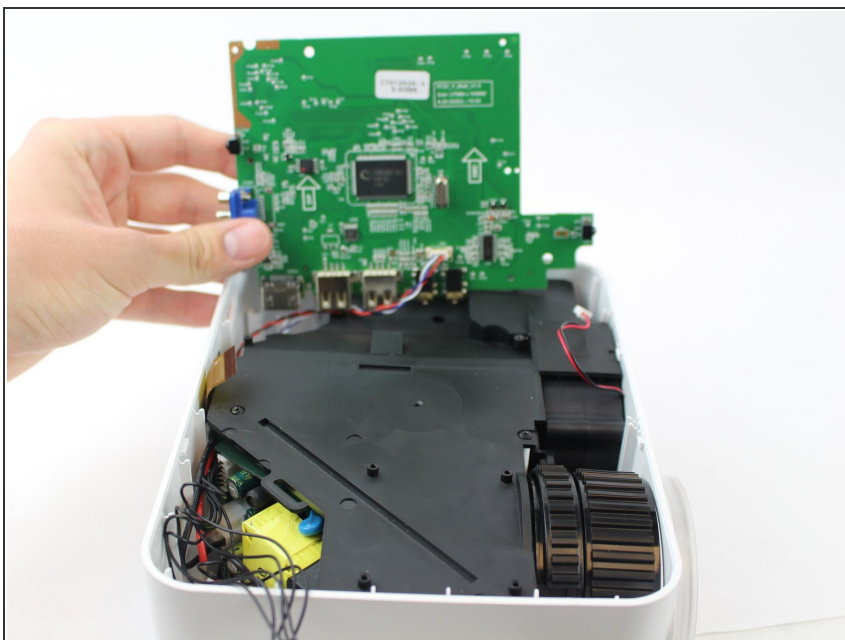
 the black cable requires more force to remove than the other cables.

Step 7



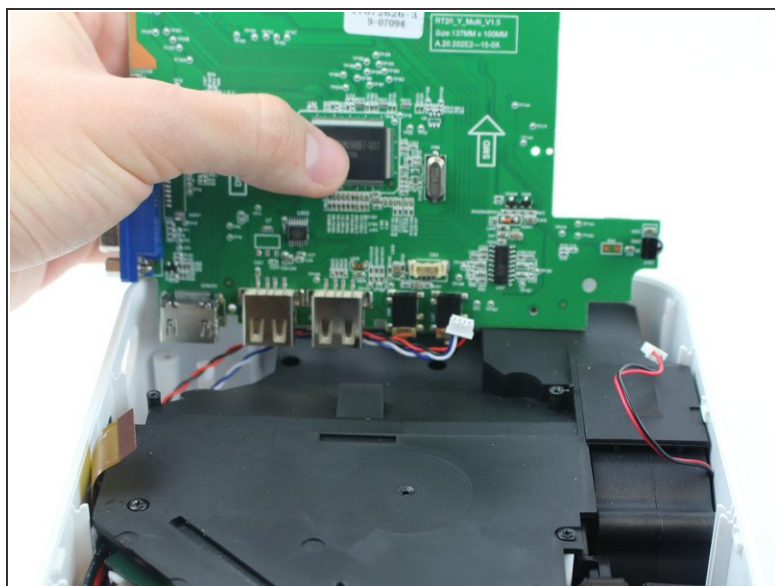
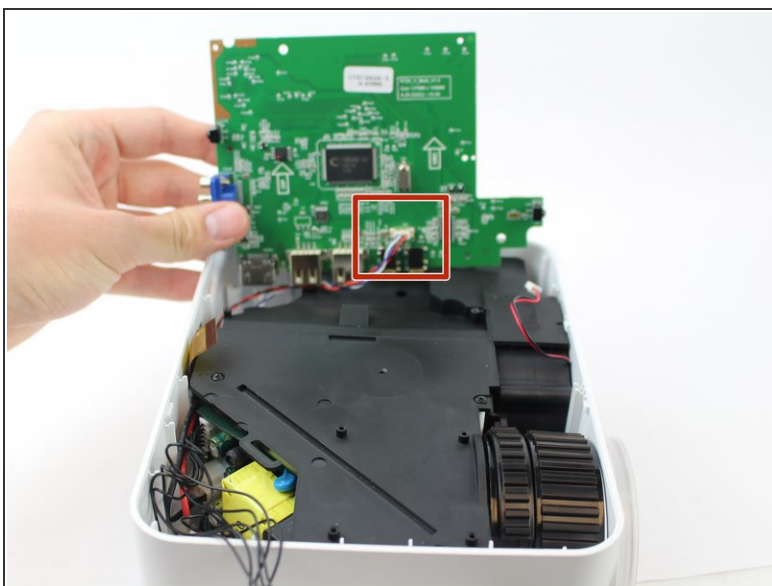
- Lift the black latch on the ZIF connector and remove the ribbon cable that attaches the digitizer to the motherboard.

Step 8



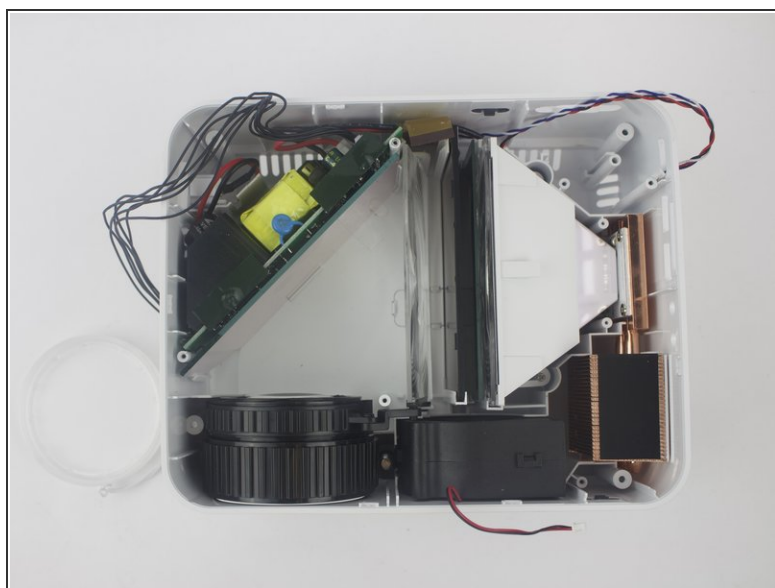
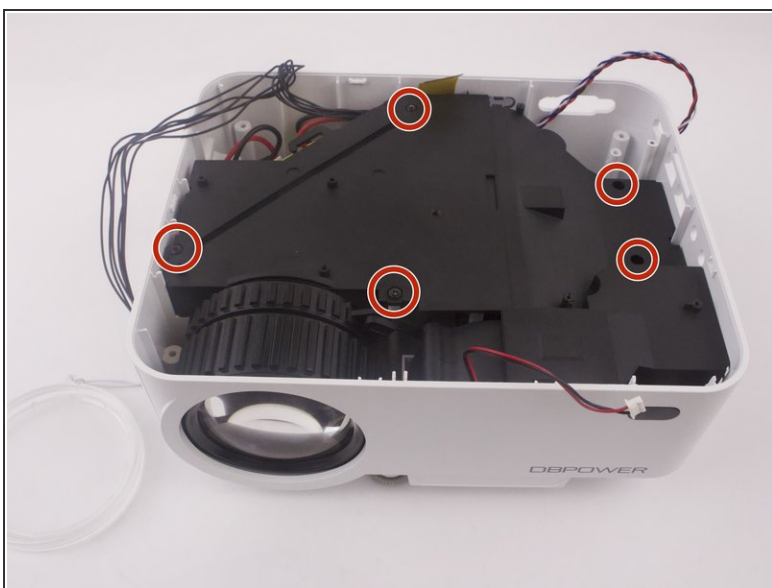
- Raise motherboard by lifting sideways and then up to avoid the ports.

Step 9



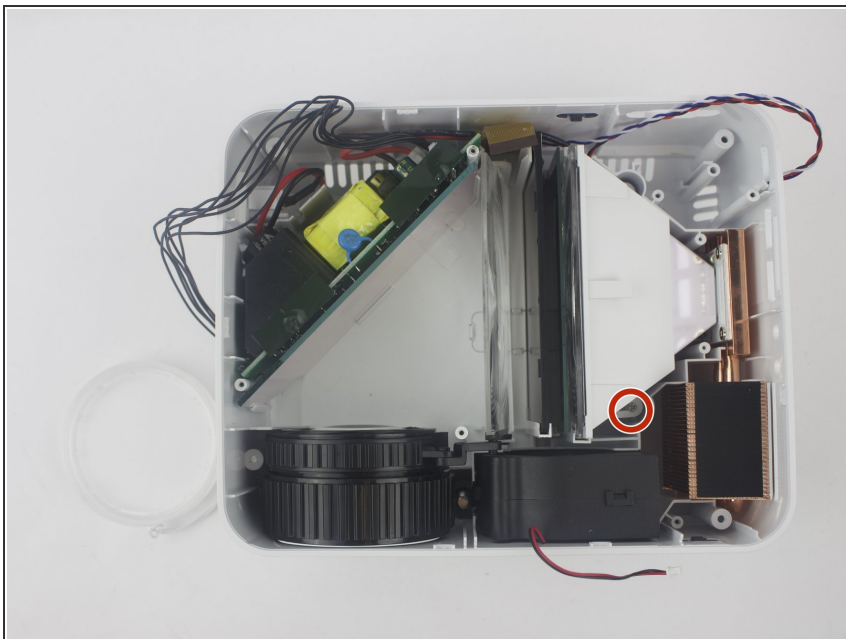
- Remove wires attaching the piezoelectric speakers to the motherboard.

Step 10



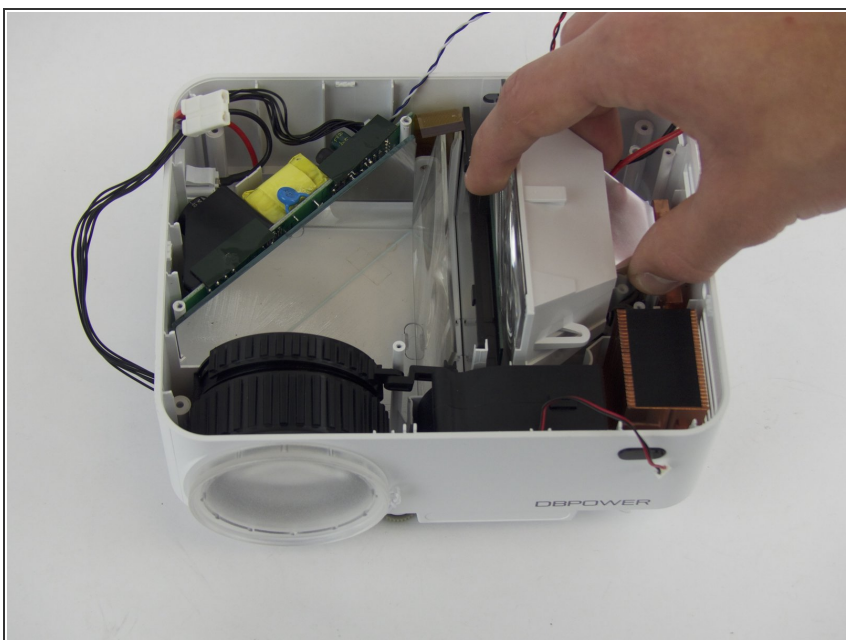
- Remove the five screws securing the black plastic cover with a J0 screwdriver.
- Lift up and out to remove.

Step 11 — Lamp



- Remove the two screws attached to the lamp with a J0 screwdriver.

Step 12



- Lift upwards to remove the lamp.

To reassemble your device, follow these instructions in reverse order.