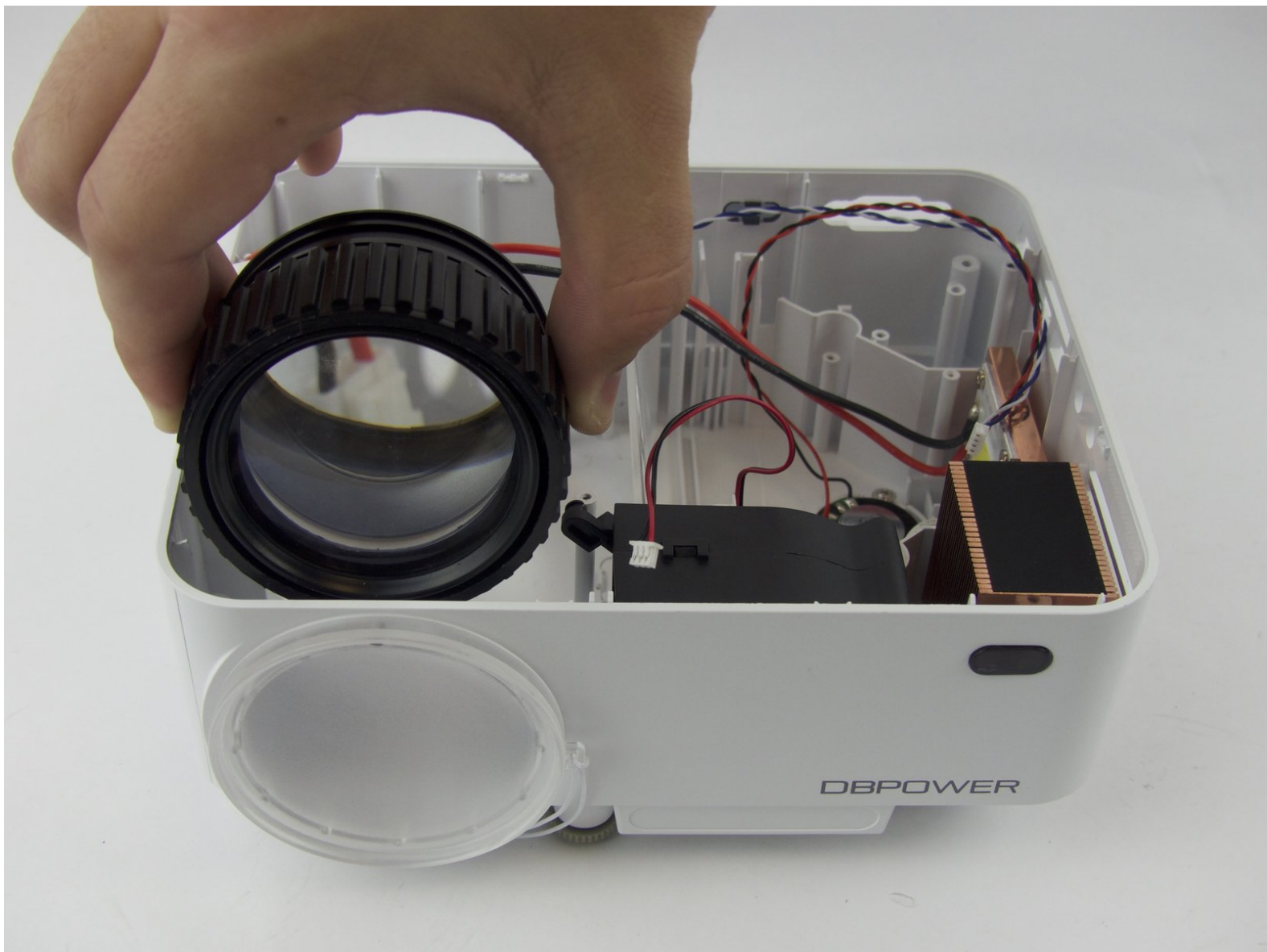




# DBPOWER T20 Lens Replacement

If the lens of your DBPOWER T20 projector is broken or scratched it can be easily replaced following this guide.

Written By: Andrea Espinosa



---

## INTRODUCTION

You will not be able to access the lens without following these steps. Removing the lens does not take a lot of force since it is on a hinge and should lift out easily. However, none of the items you come in contact with leading up to the lens removal are sturdy so don't be afraid to use some force.

---

### TOOLS:

- [Spudger](#) (1)
  - [Phillips #0 Screwdriver](#) (1)
  - [Phillips #2 Screwdriver](#) (1)
-

## Step 1 — DBPOWER T20 Disassembly



- Flip the device and lay flat.

## Step 2



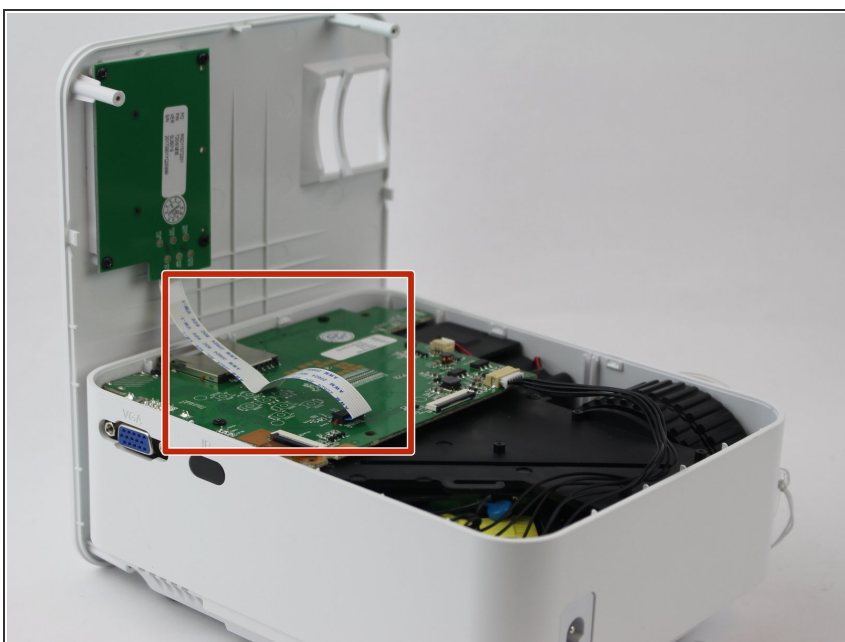
- Remove the four (9 mm) screws with a PH2 screwdriver.
- Remove the two (7 mm) located with a PH2 screwdriver.

## Step 3



- Flip the device over and pry the top off with a plastic opening tool.

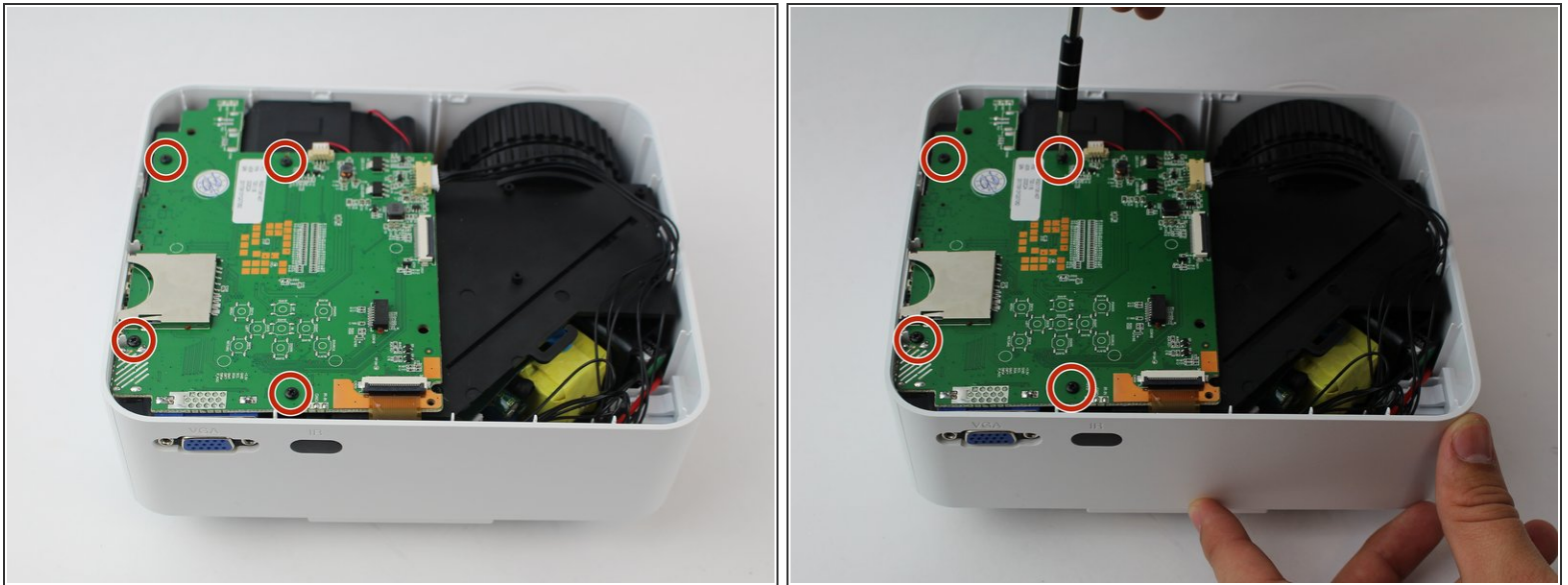
## Step 4



- Remove the ribbon cable connecting the motherboard to the button control board by gently pulling it from its connector.

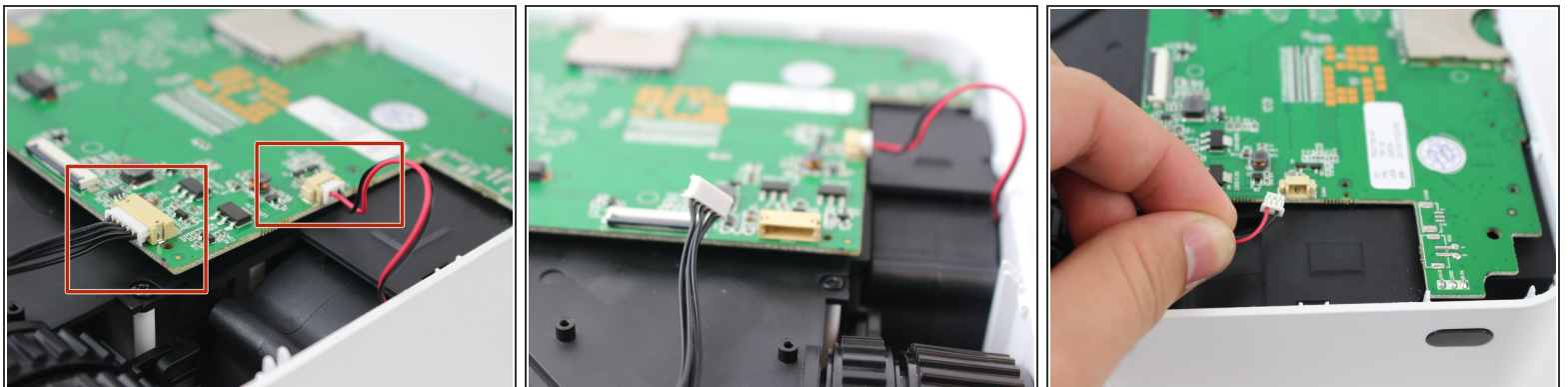


## Step 5



- Remove four (6 mm) screws connecting the motherboard using a J0 screwdriver.

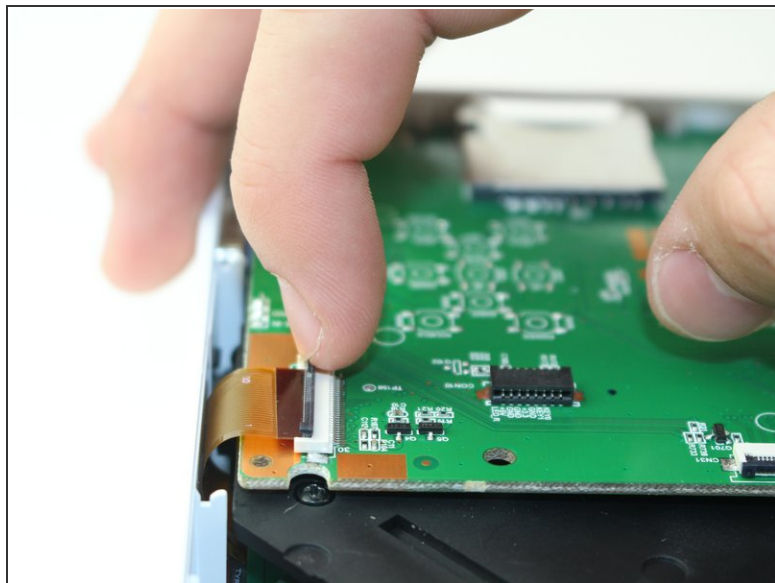
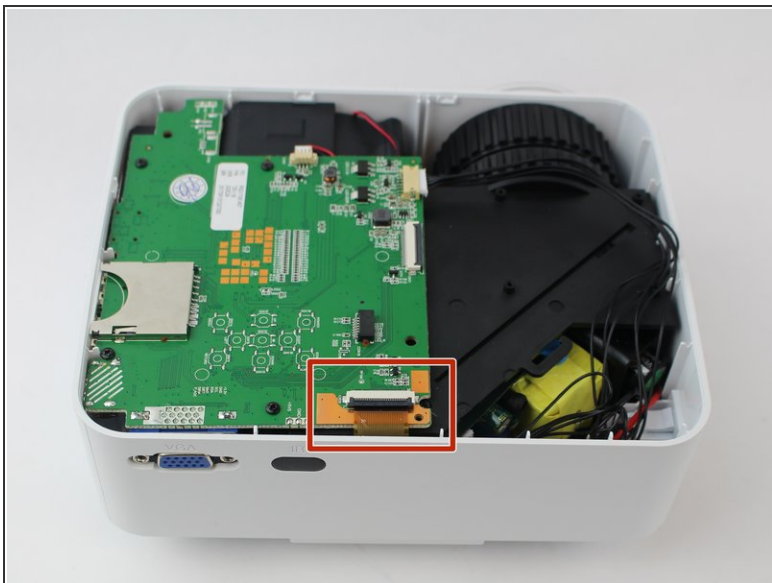
## Step 6



- Remove the two cables connected to the motherboard: black power cable and the red/black fan cable.

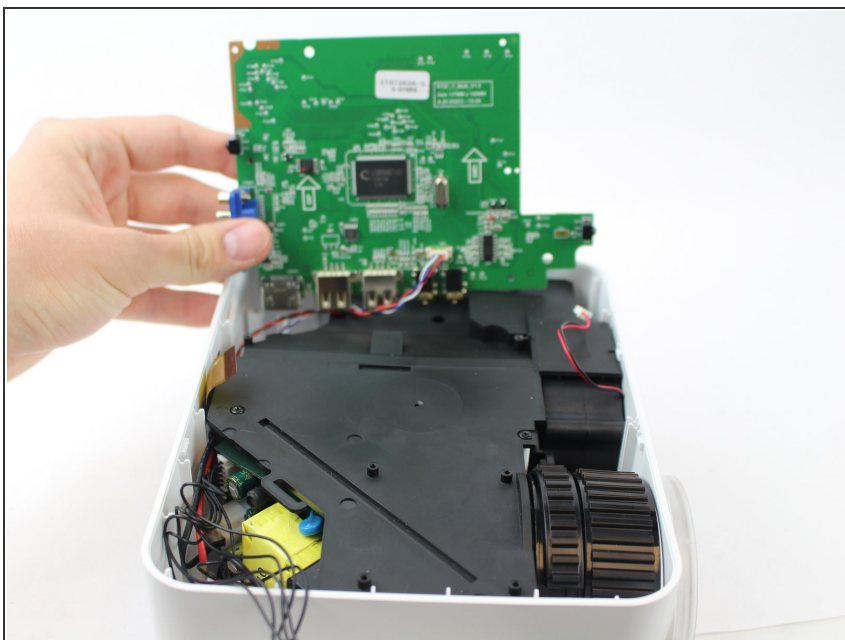
 the black cable requires more force to remove than the other cables.

## Step 7



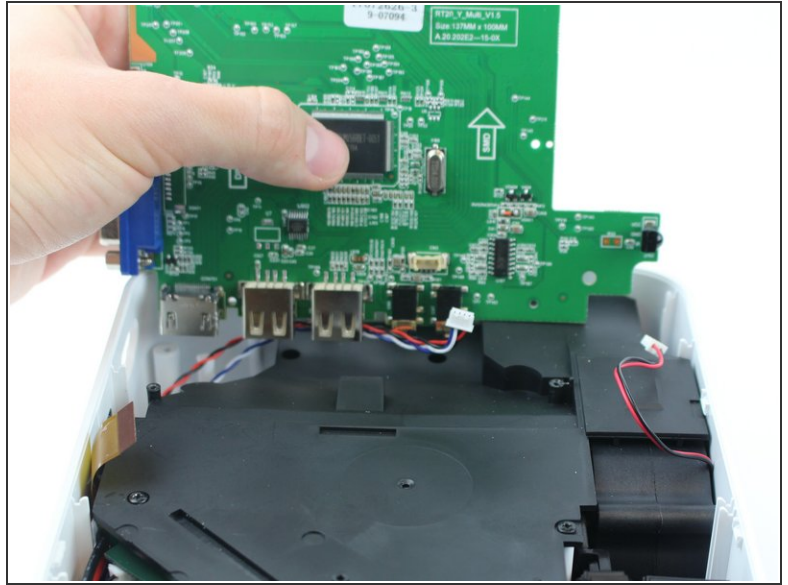
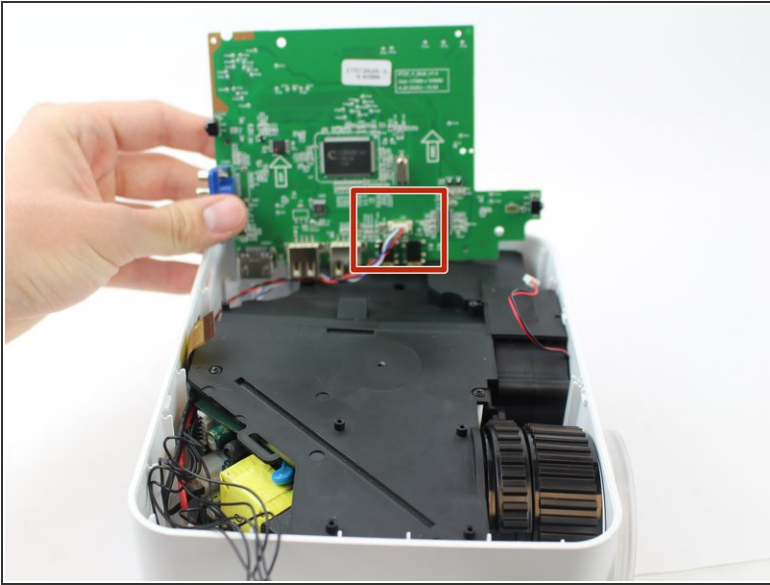
- Lift the black latch on the ZIF connector and remove the ribbon cable that attaches the digitizer to the motherboard.

## Step 8



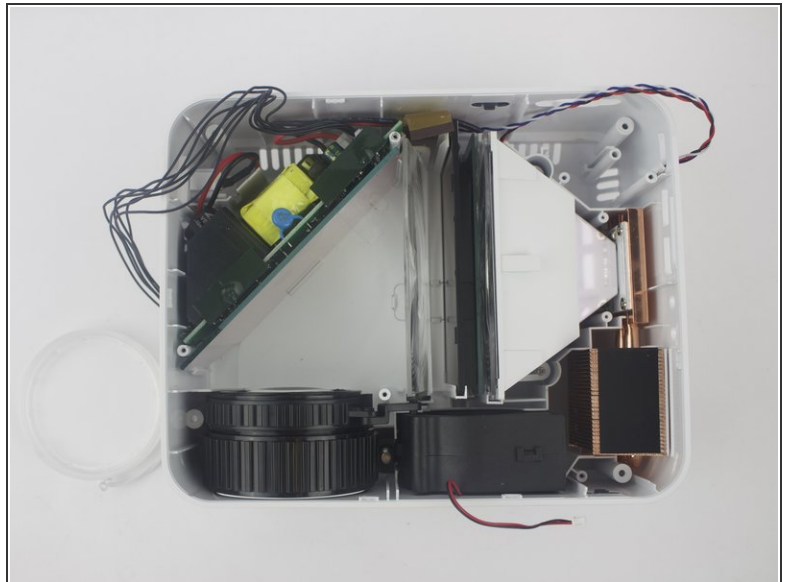
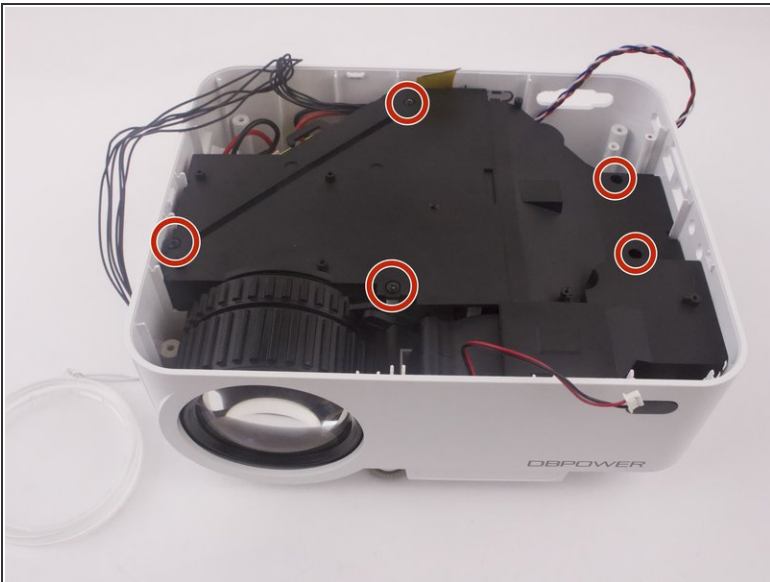
- Raise motherboard by lifting sideways and then up to avoid the ports.

## Step 9



- Remove wires attaching the piezoelectric speakers to the motherboard.

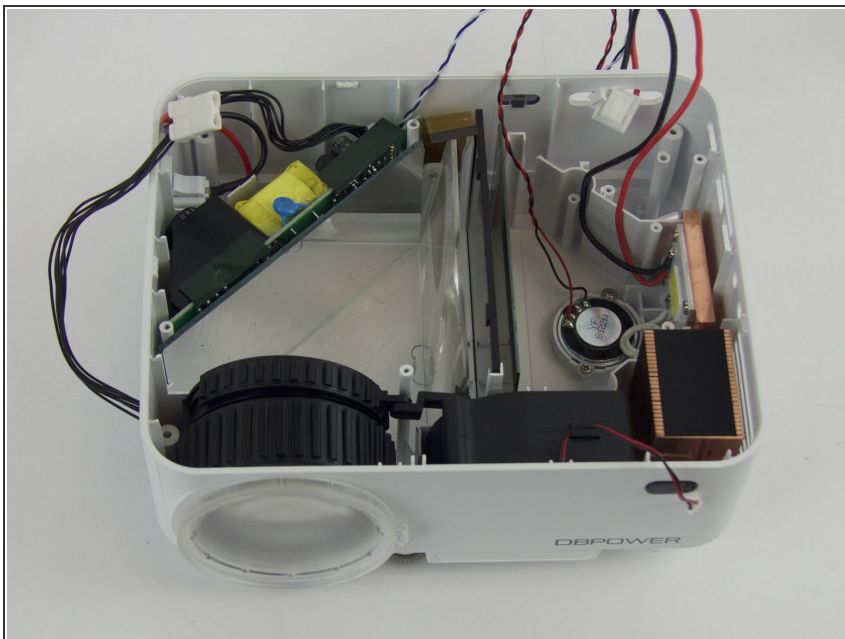
## Step 10



- Remove the five screws securing the black plastic cover with a J0 screwdriver.
- Lift up and out to remove.

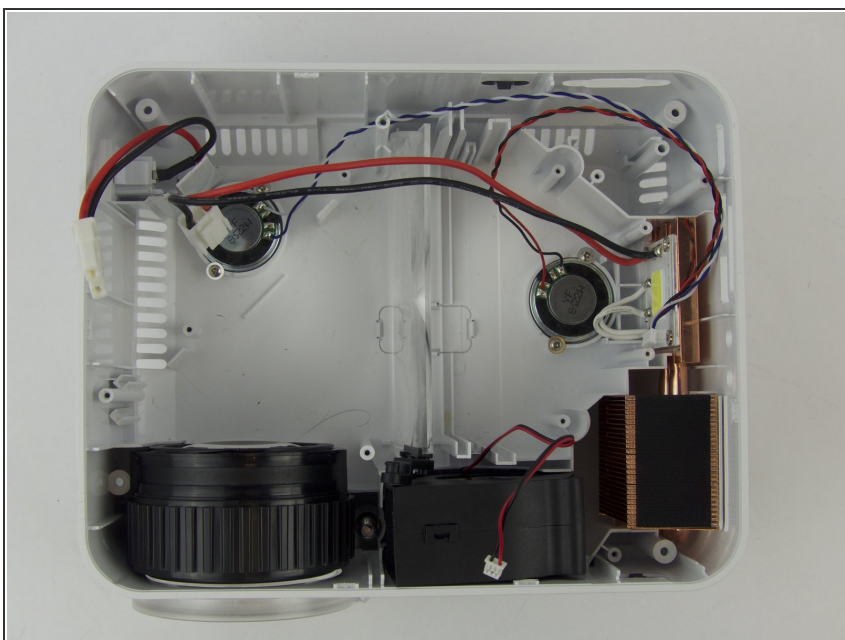


## Step 11 — Lens



- ⓘ The lamp does not need to be removed for this step to be preformed.

## Step 12



- Detach the keystone adjuster from the lens housing.
- ⓘ Lens is on a hinge so it should lift off easily, if it doesn't, adjust by swaying it forward or backward.



## Step 13



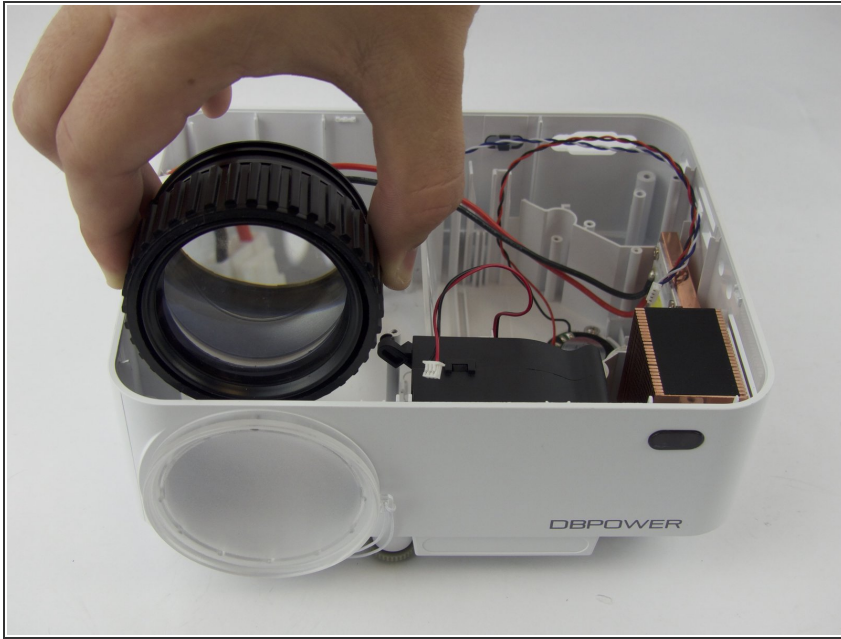
- Remove the rubber foot and warranty sticker found underneath the device.

## Step 14



- Remove the two screws on the bottom of the device with a J0 screwdriver.

## Step 15



- Remove the focus-adjustment ring from the lens housing.

To reassemble your device, follow these instructions in reverse order.