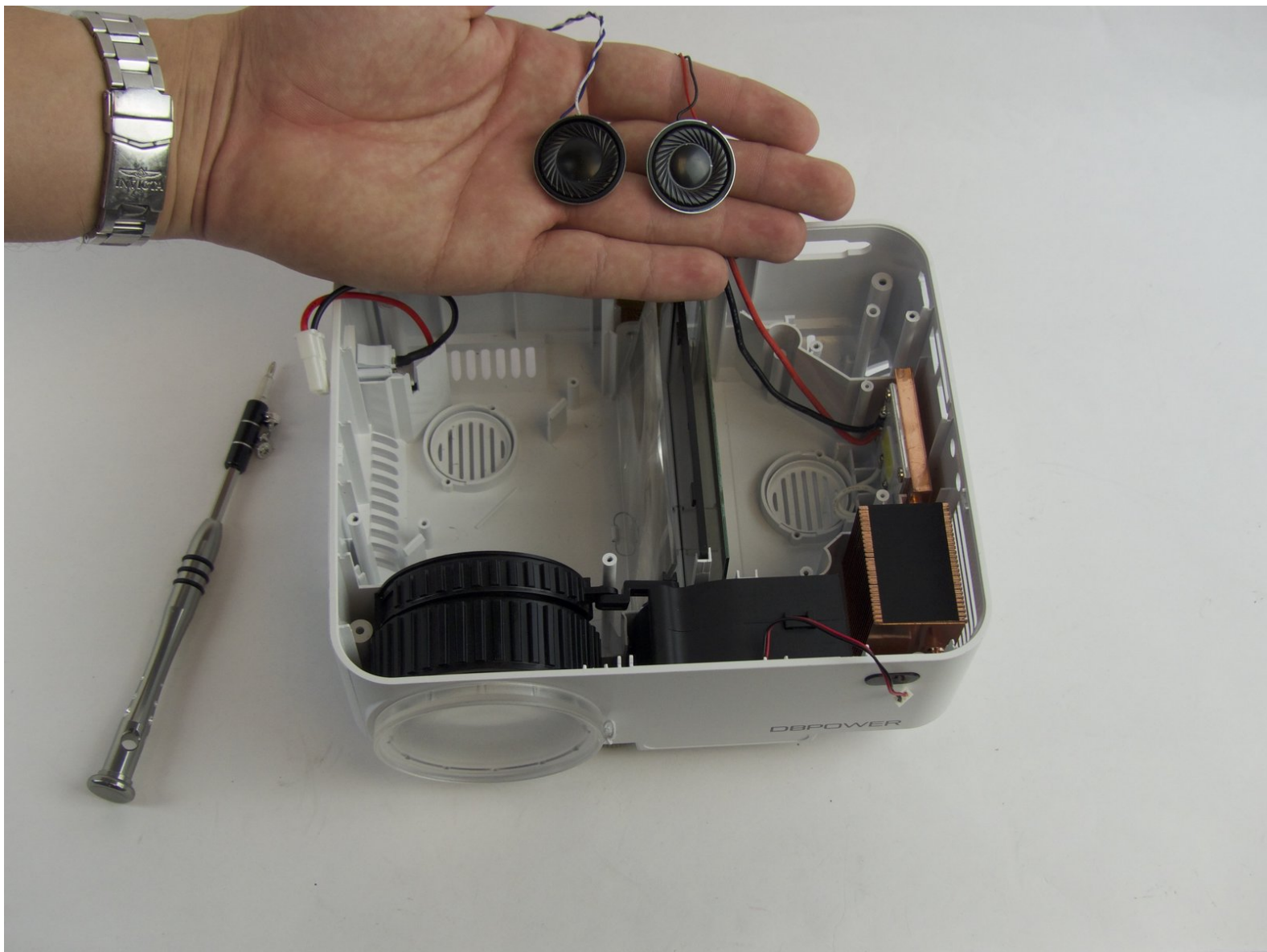




DBPOWER T20 Speaker Replacement

This guide will demonstrate how to remove the internal components to expose and replace the two speakers of the DBPower T20 projector.

Written By: Ryan Goldin



INTRODUCTION

Follow the remaining steps in this guide in order to locate and replace the speakers locate on the interior bottom of the device housing. Take care not to confuse the speakers with batteries, as they look similar.



TOOLS:

- [Spudger](#) (1)
 - [Phillips #2 Screwdriver](#) (1)
 - [Phillips #0 Screwdriver](#) (1)
-

Step 1 — DBPOWER T20 Disassembly



- Flip the device and lay flat.

Step 2



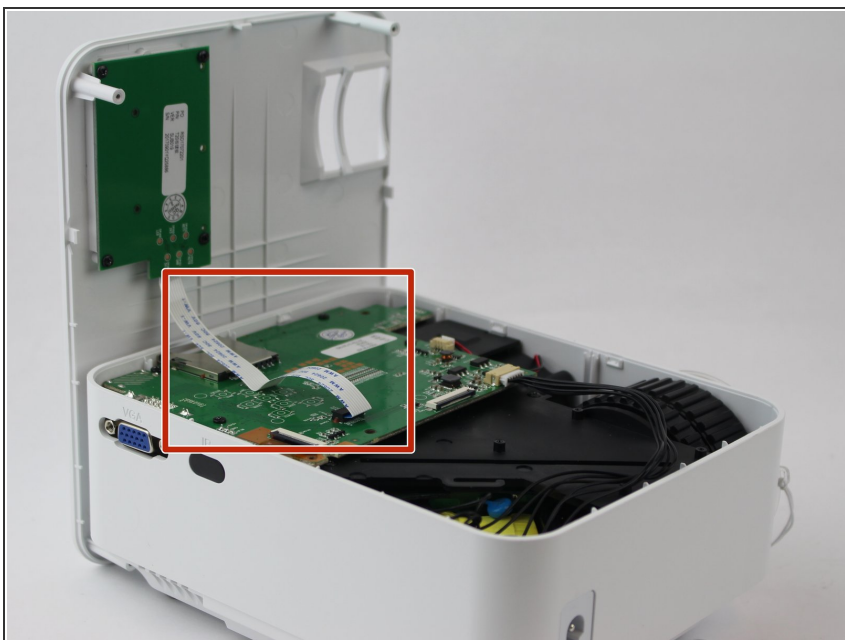
- Remove the four (9 mm) screws with a PH2 screwdriver.
- Remove the two (7 mm) located with a PH2 screwdriver.

Step 3



- Flip the device over and pry the top off with a plastic opening tool.

Step 4



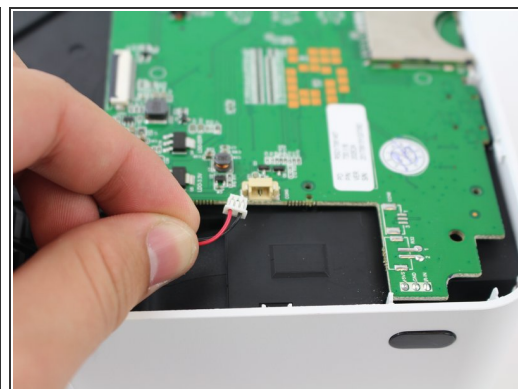
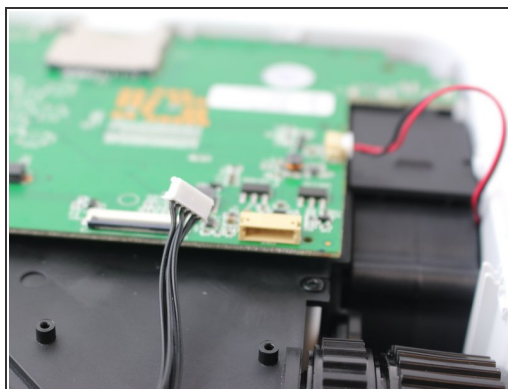
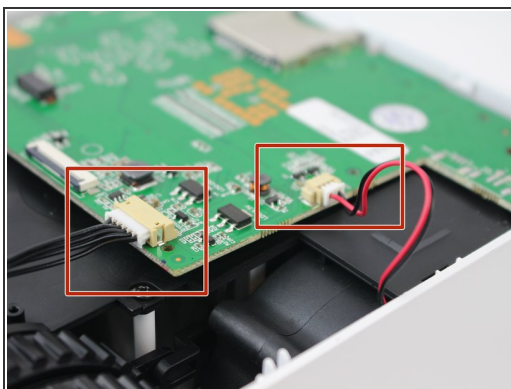
- Remove the ribbon cable connecting the motherboard to the button control board by gently pulling it from its connector.

Step 5



- Remove four (6 mm) screws connecting the motherboard using a J0 screwdriver.

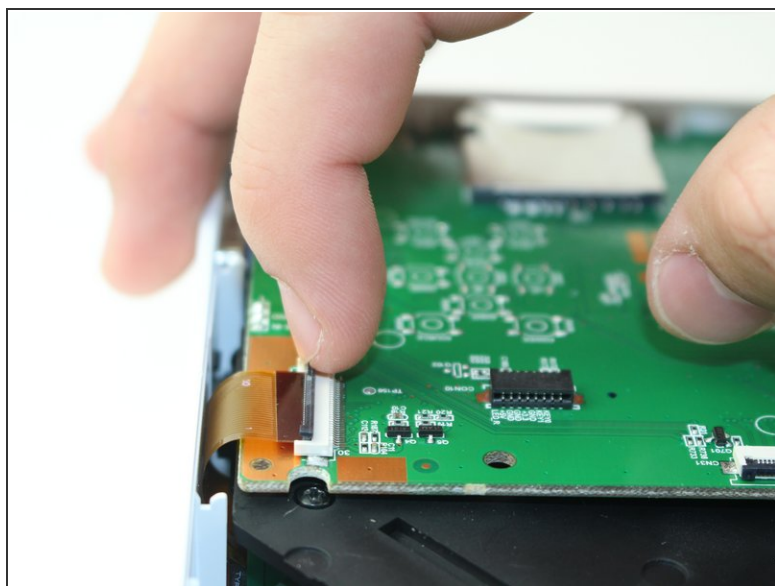
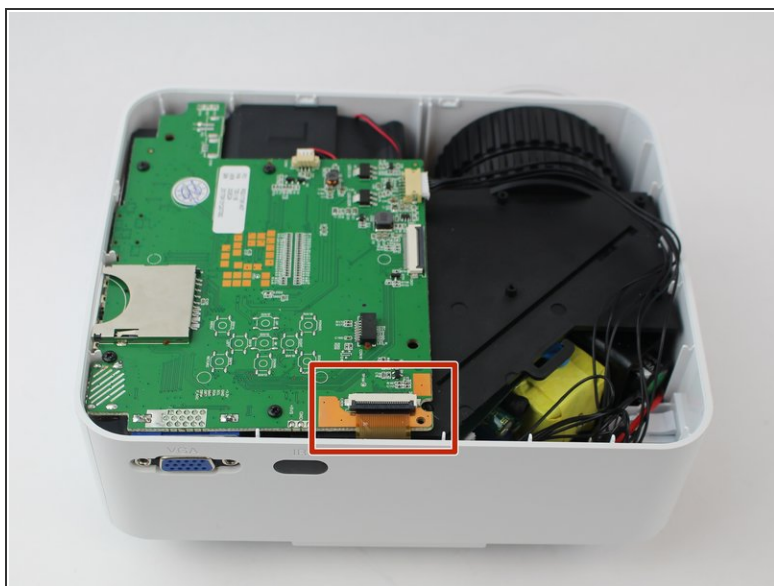
Step 6



- Remove the two cables connected to the motherboard: black power cable and the red/black fan cable.

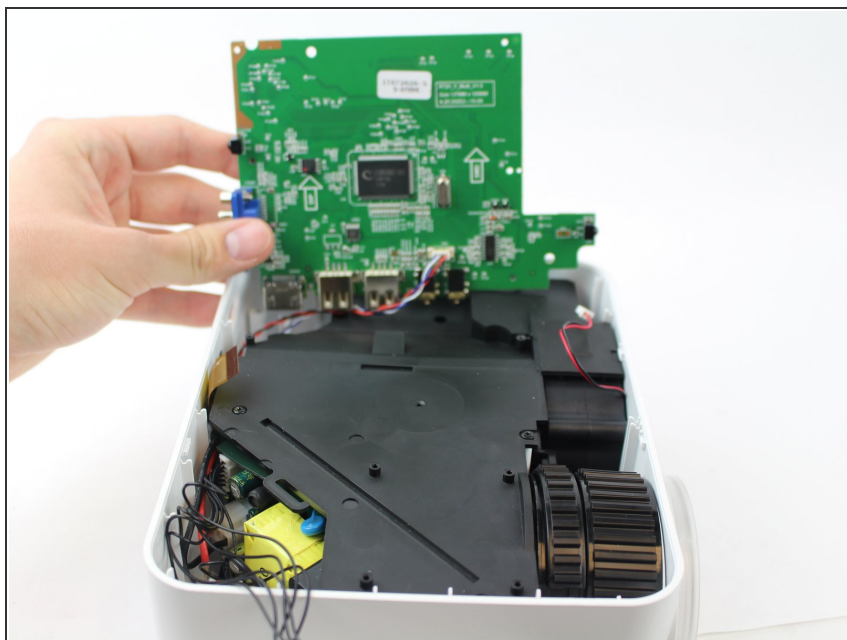
 the black cable requires more force to remove than the other cables.

Step 7



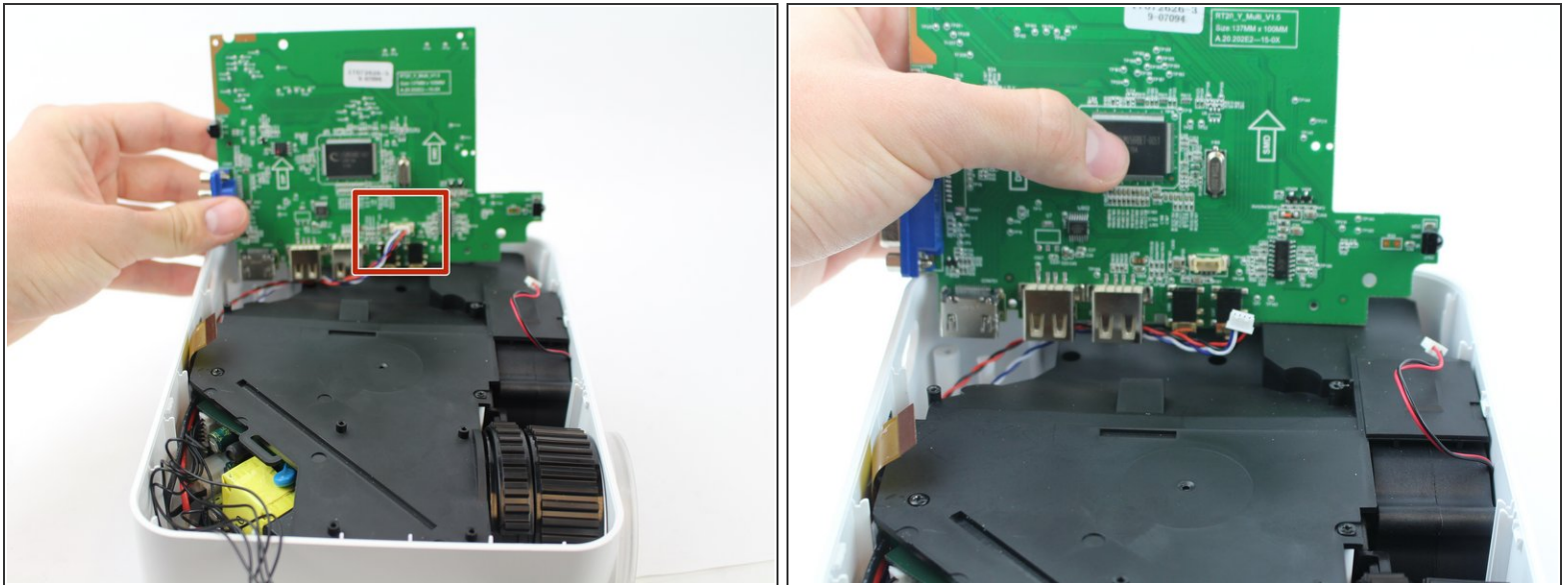
- Lift the black latch on the ZIF connector and remove the ribbon cable that attaches the digitizer to the motherboard.

Step 8



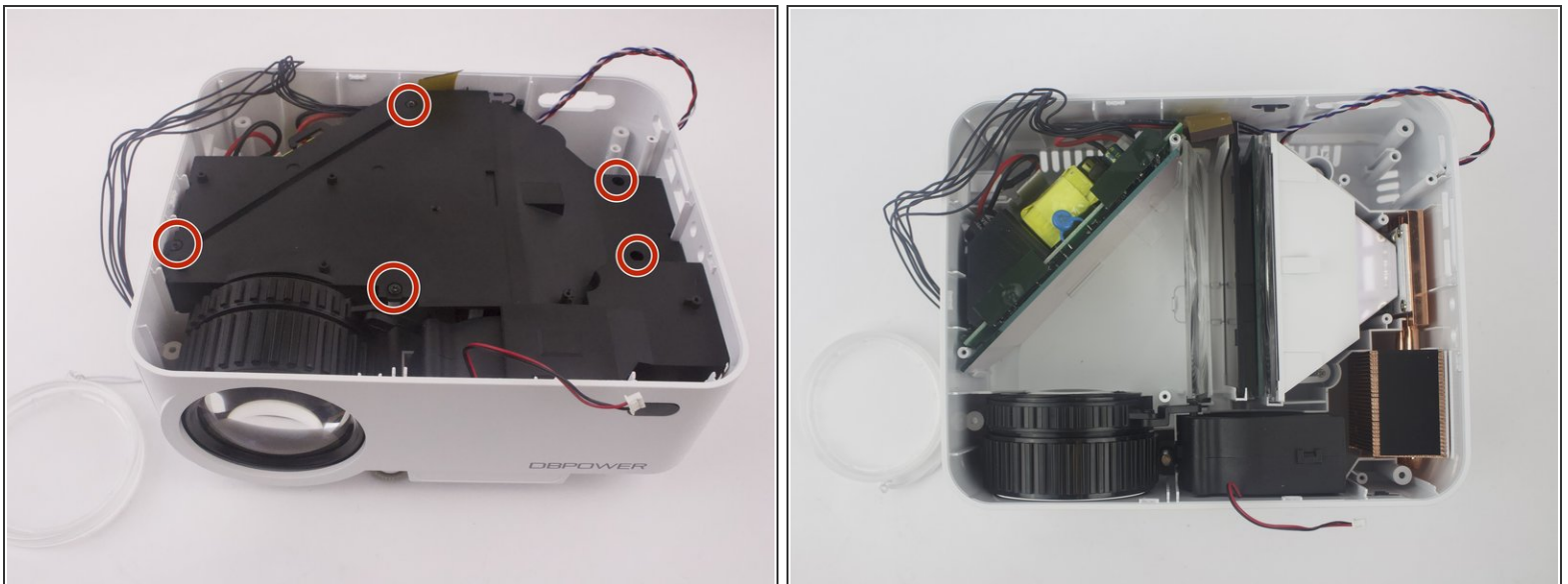
- Raise motherboard by lifting sideways and then up to avoid the ports.

Step 9



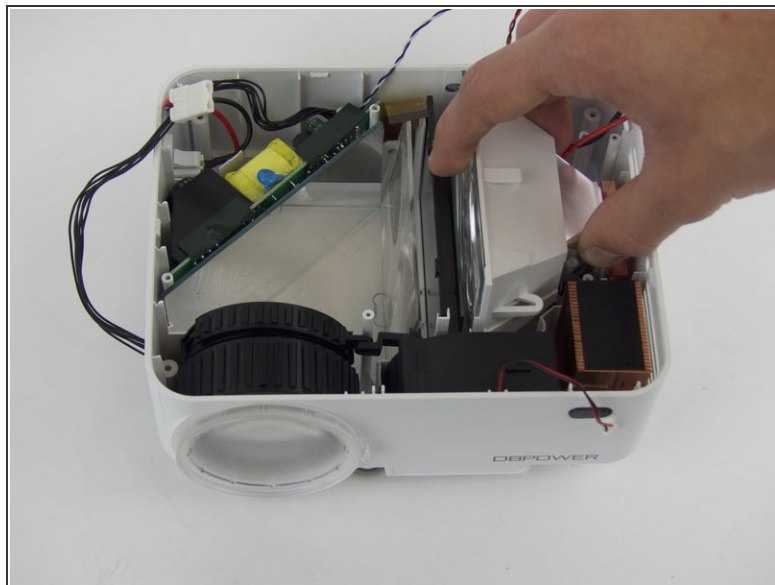
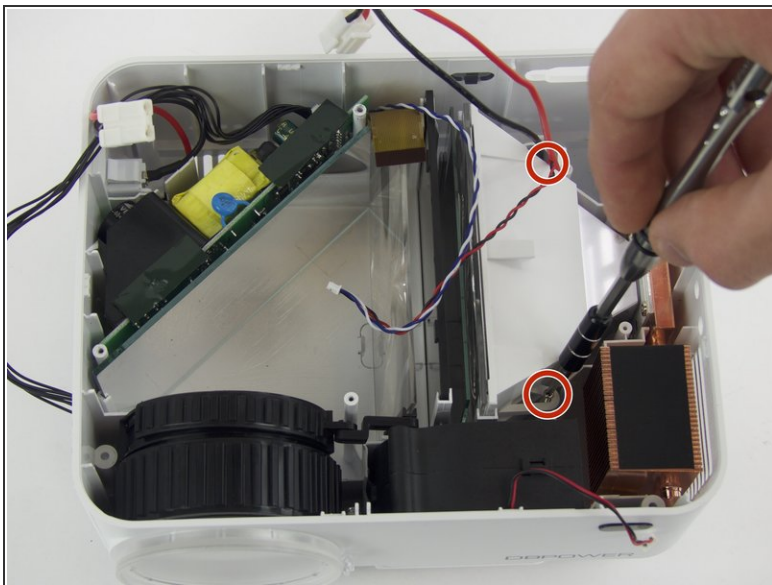
- Remove wires attaching the piezoelectric speakers to the motherboard.

Step 10



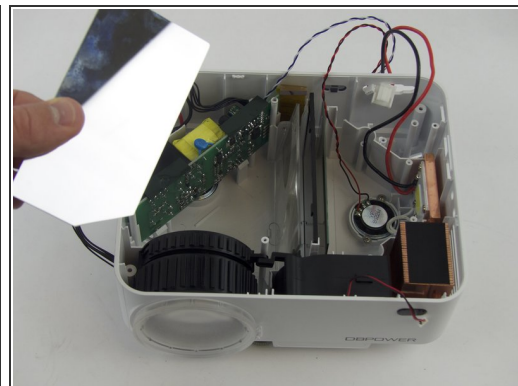
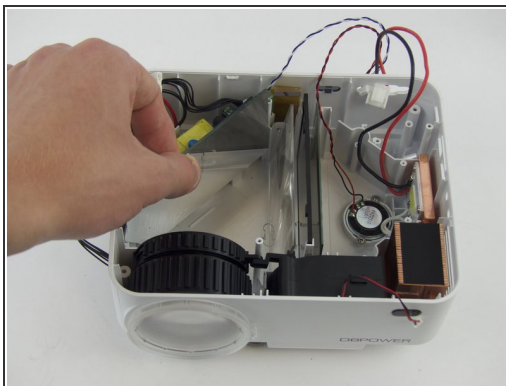
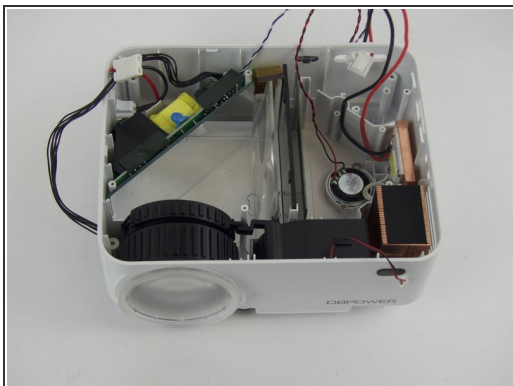
- Remove the five screws securing the black plastic cover with a J0 screwdriver.
- Lift up and out to remove.

Step 11 — Speaker



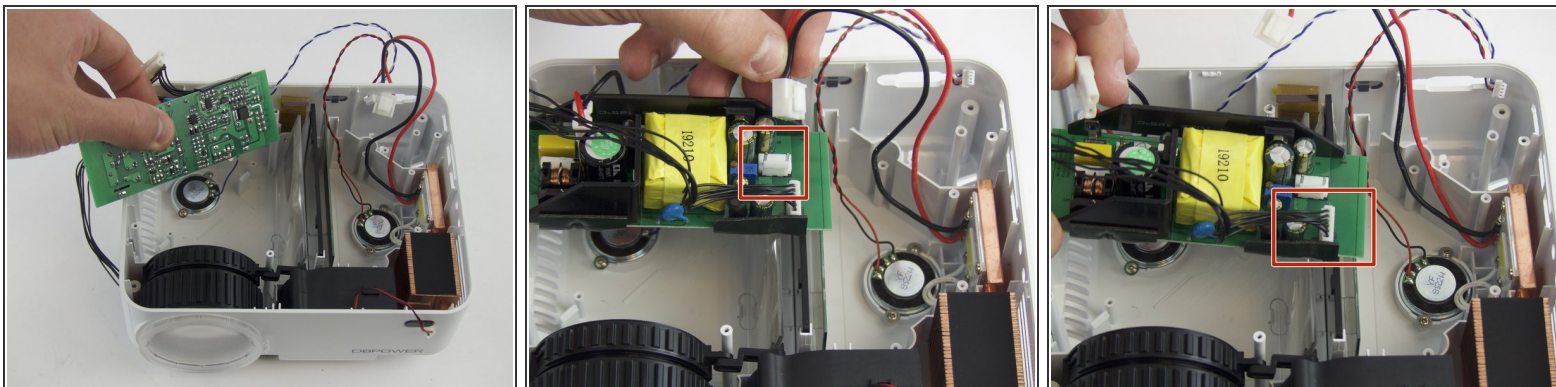
- Remove the two (3 mm) screws connecting the bracket down and pull out the reflector, using a J0 Philips Head Screwdriver.

Step 12



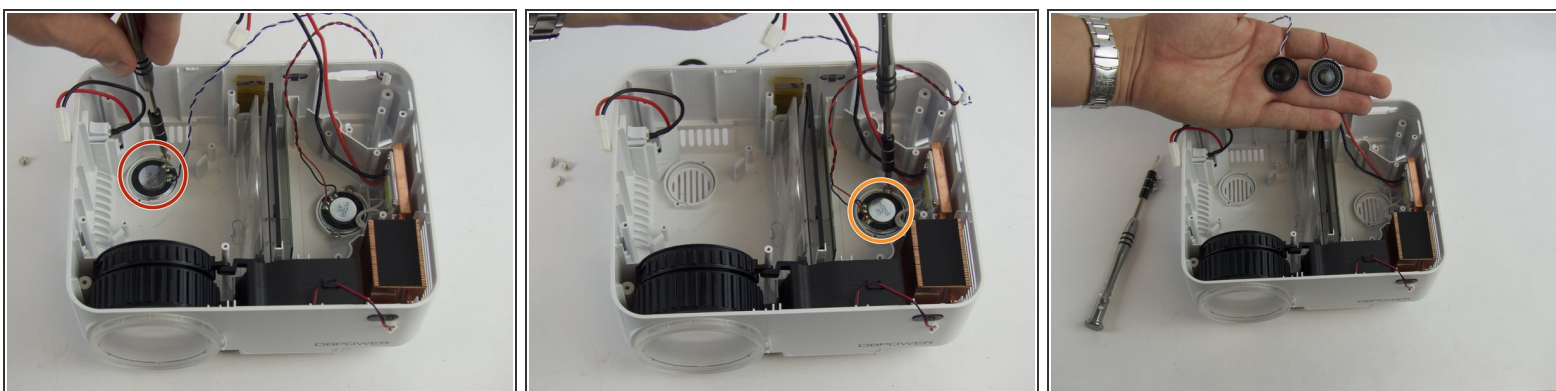
- Slide the mirror straight up to remove.

Step 13



- Slide out the power source and disconnect its cables from the power jack and the light.

Step 14



- Remove the screws holding down the first speaker with a J0 screwdriver.
- Remove the screws holding down the second speaker down.

To reassemble your device, follow these instructions in reverse order.