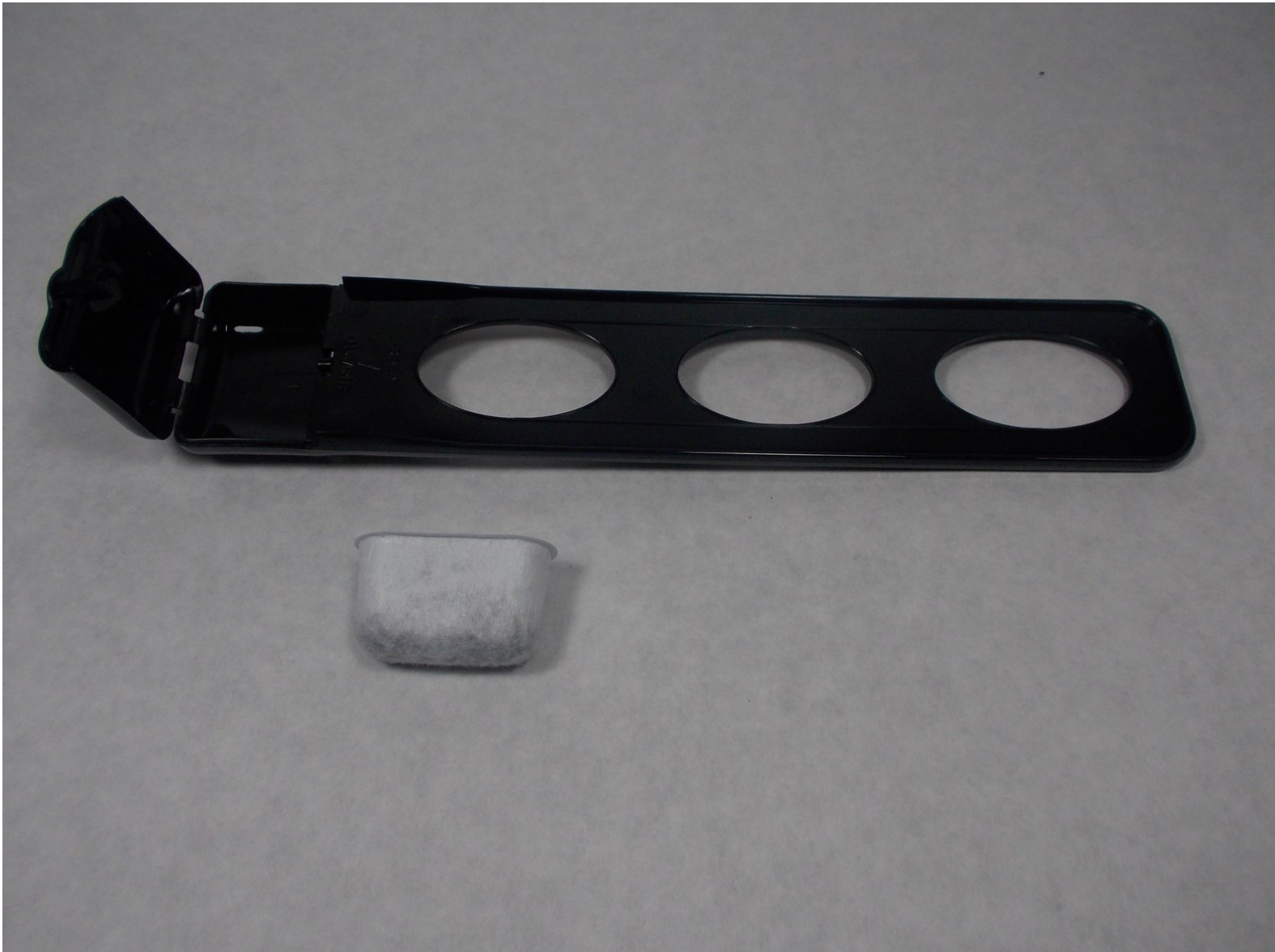




# DCC-3200 Charcoal Filter/Filter Basket Replacement

this is a guide to solve 2 possible problems: an overused charcoal filter and a ripped filter basket.

Written By: Hamad Khan

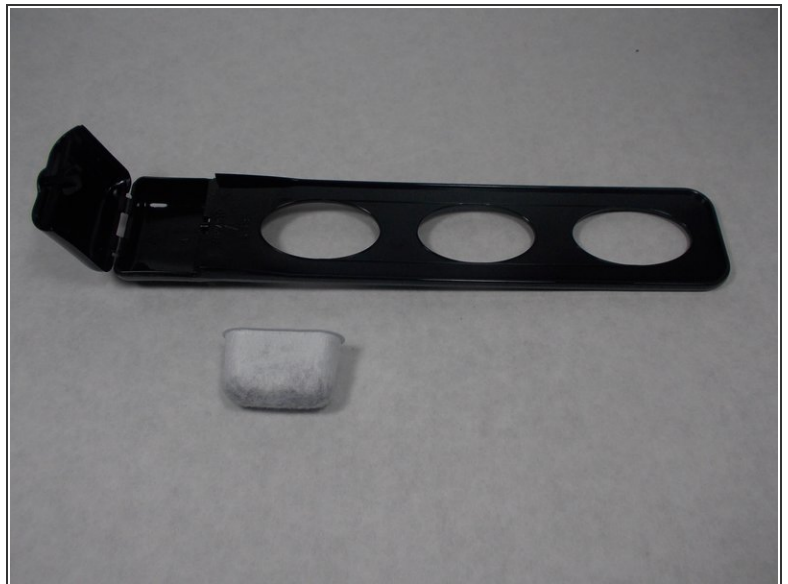


## Step 1 — Charcoal Filter/Filter Basket



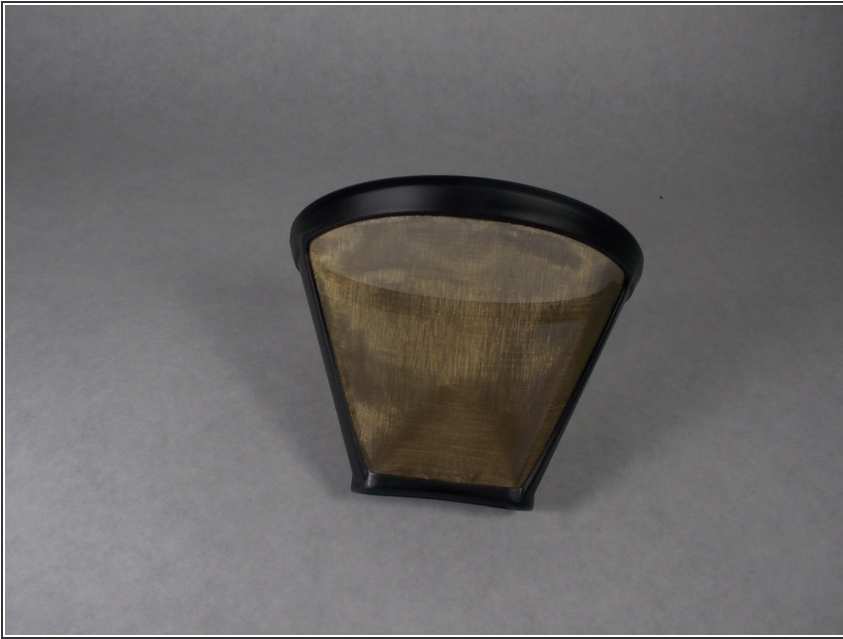
- Open lid
- Take out the charcoal holder and open the capsule at the bottom.
- The charcoal holder is located towards the back-left corner of the coffee maker.

## Step 2



- Replace the Charcoal filter with another one which can be purchased [here](#)

### Step 3



- Pull out the filter basket and see if there are any rips in the lining.
- If so, use some nontoxic and waterproof adhesive on the open hole.
- If the hole is too big or you don't want to glue it, you can purchase a new one on their website as well right [here](#)

To reassemble your device, follow these instructions in reverse order.