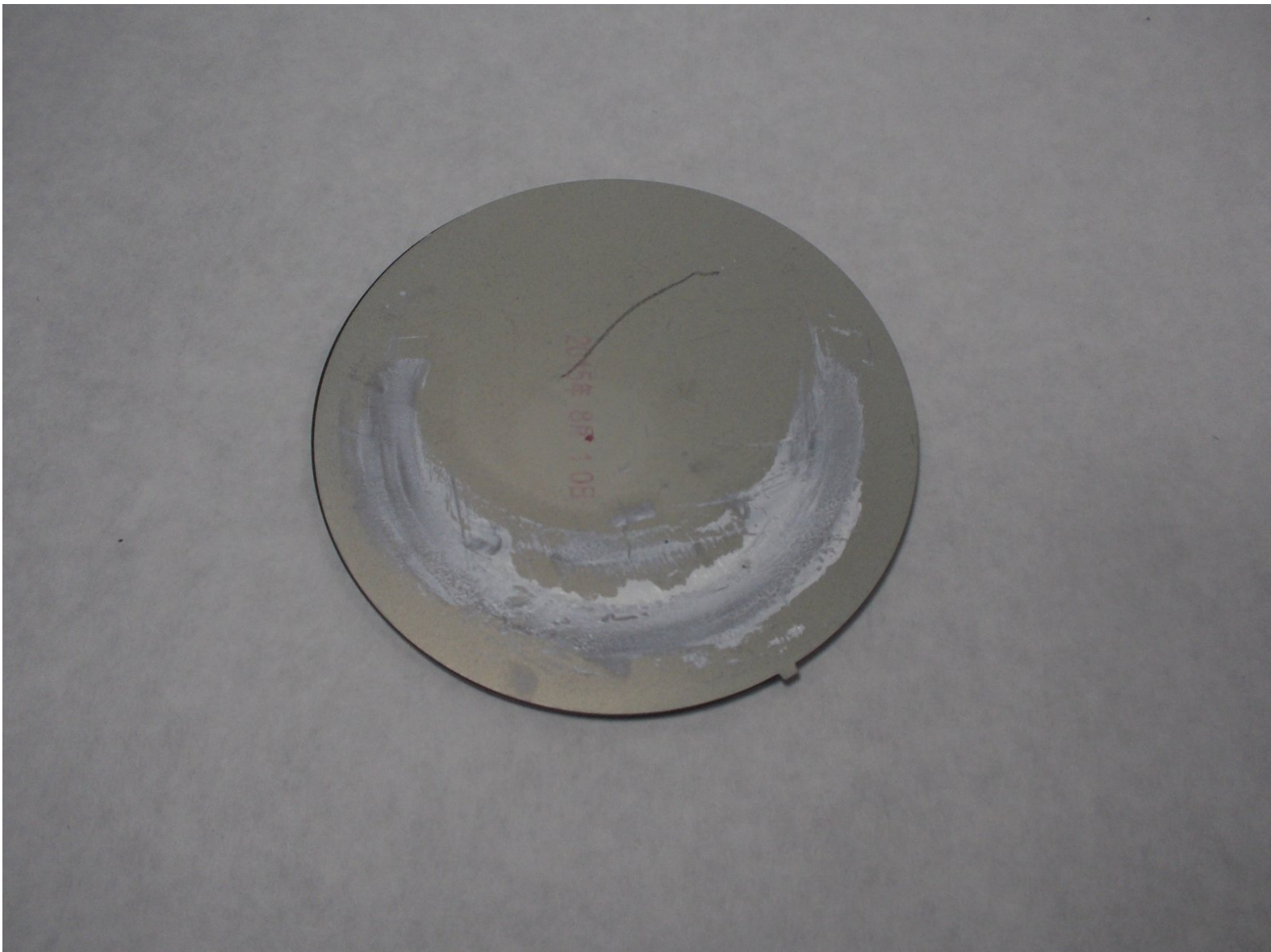




# DCC-3200 Cracked hot plate Replacement

This guide will help people replace.

Written By: Hamad Khan





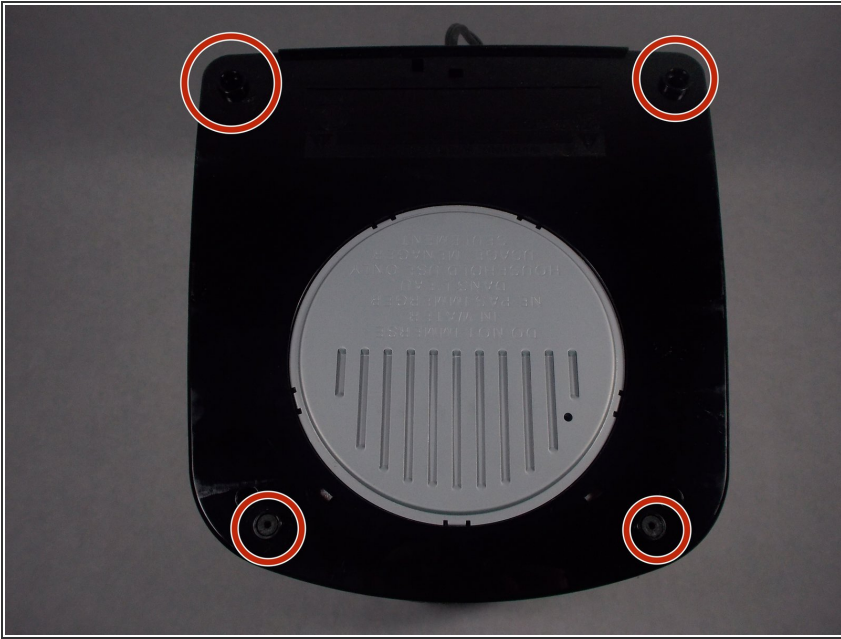


## TOOLS:

- [Essential Electronics Toolkit \(1\)](#)
-

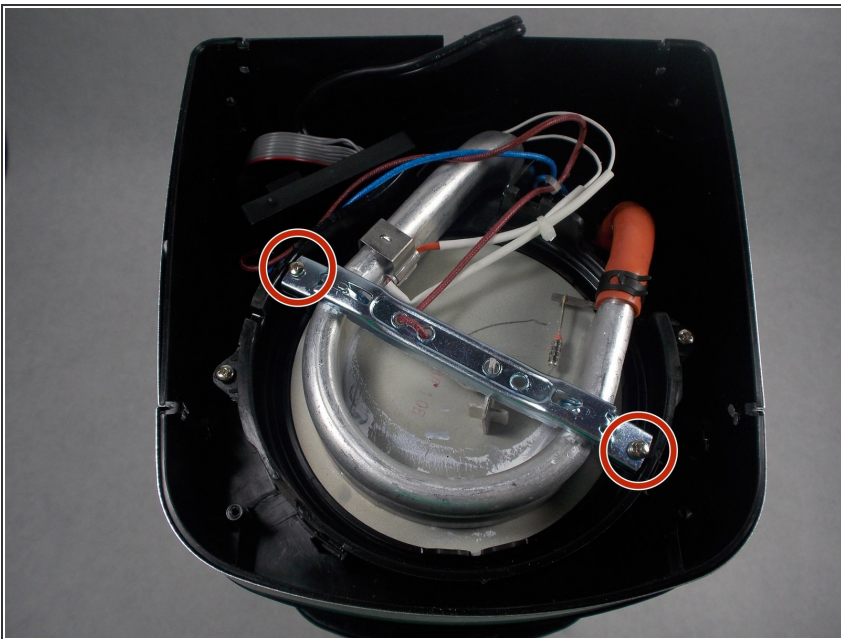


## Step 1 — Cracked hot plate



- Make sure it is unplugged.
- Flip it over. Take out the force screws.
- Un-click the power cord from the bottom and set the panel aside.

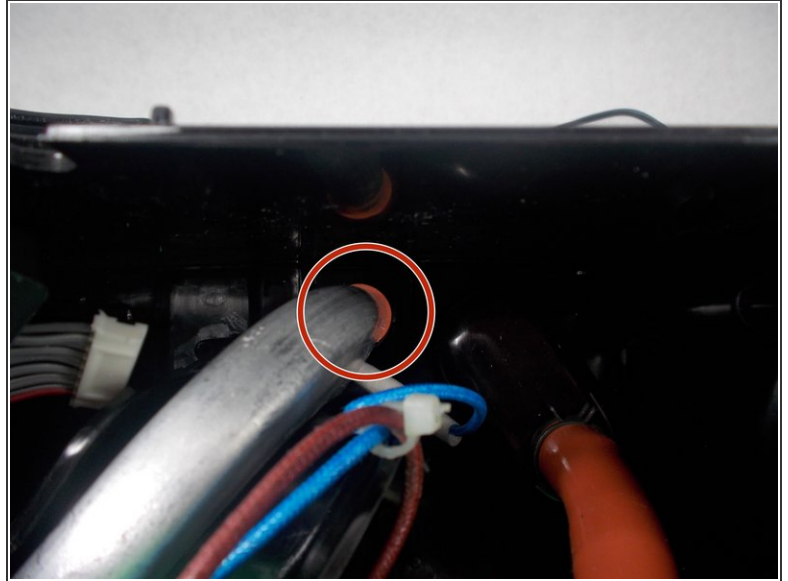
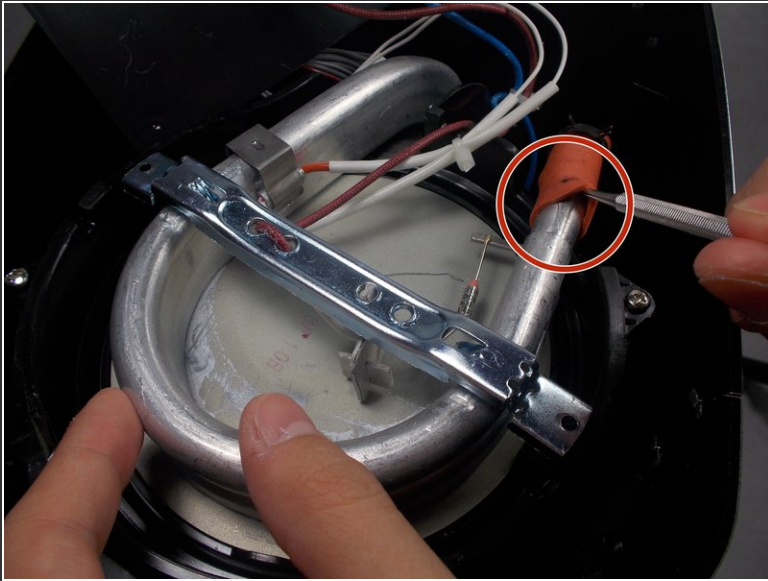
## Step 2



- Unscrew the two screws on the silver brace.
- You will see a black clamp around the tube.

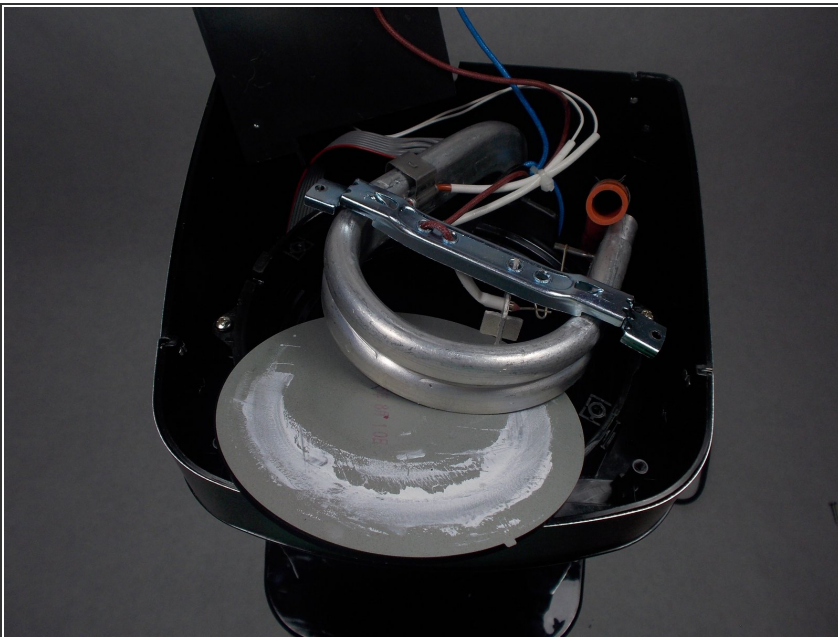


### Step 3



- Please use a flat strong object to wedge the red tube off of the metal.
- Please repeat this for the other side of the silver pipe deeper in the device.

### Step 4



- Once that is finished carefully pick the middle pipe about an inch and attempt to slide the hot plate out of its area.
- Replace new hot plate with new thermal paste.



To reassemble your device, follow these instructions in reverse order.