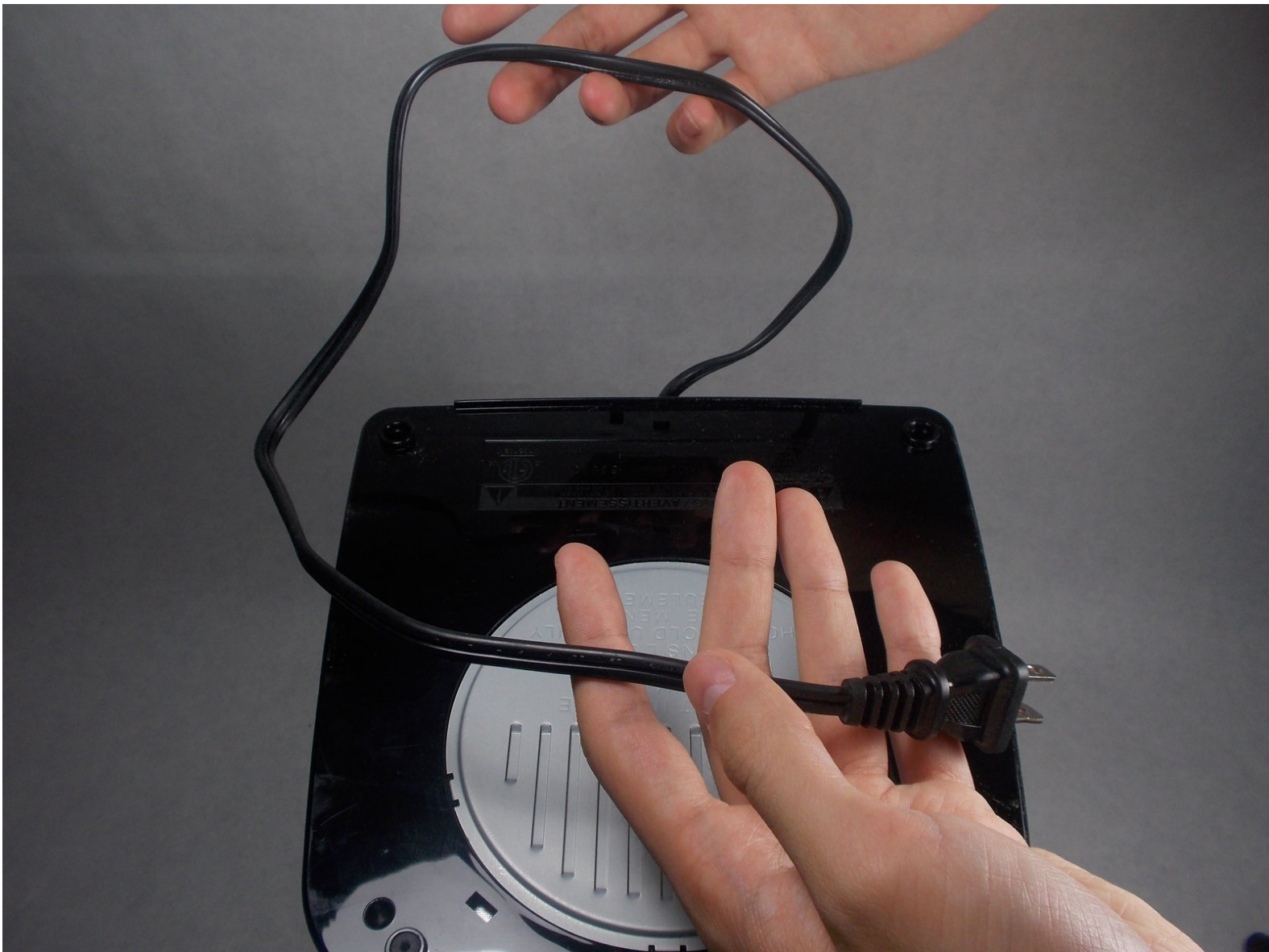




DCC-3200 Faulty Power Cord Replacement

This guide shows you how to fix a faulty power cord.

Written By: Hamad Khan

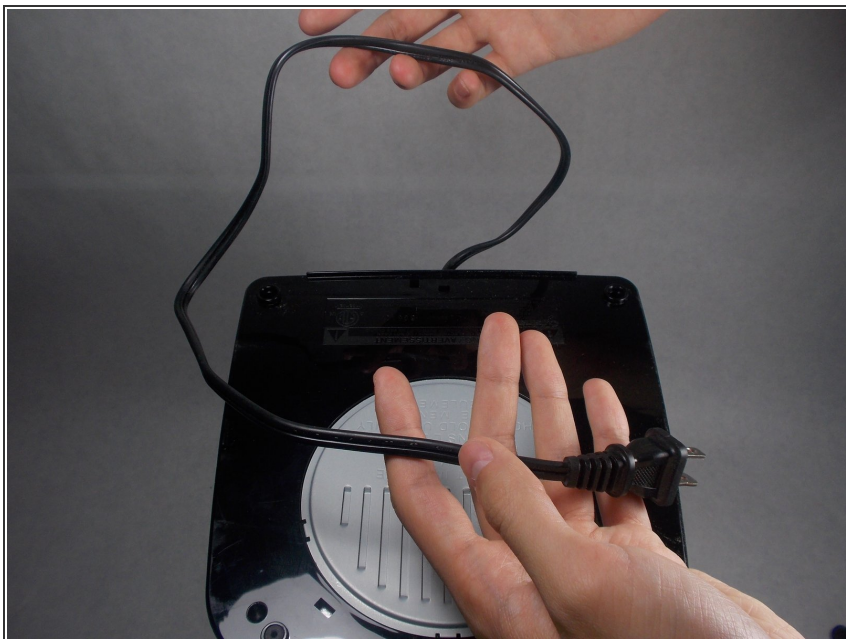




TOOLS:

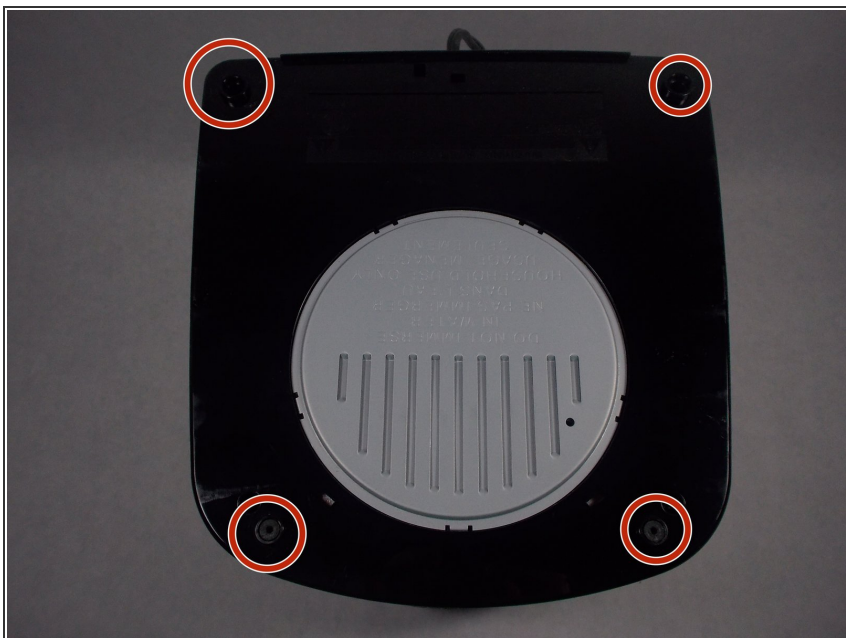
- [Essential Electronics Toolkit](#) (1)
- [Wire stripper/crimping tool](#) (1)
- [Soldering Iron](#) (1)

Step 1 — Faulty Power Cord



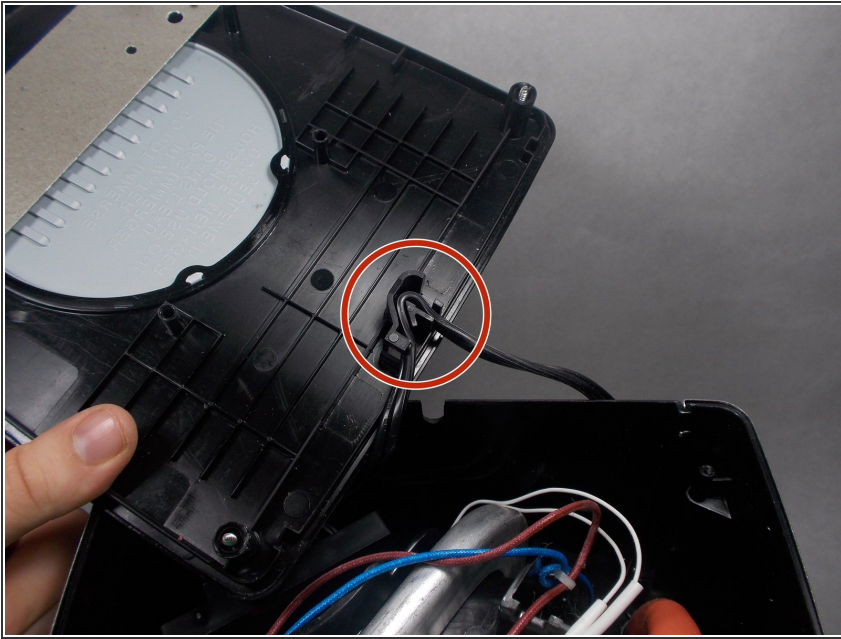
- First, please be sure that the device is unplugged and that there is no water in the reservoir.
- Check the power cord for frays or cracks.

Step 2



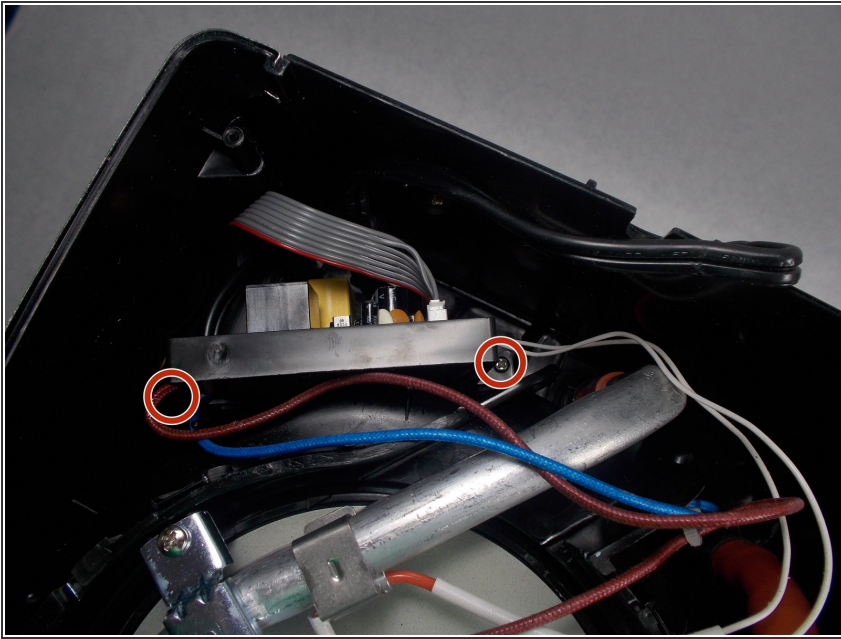
- If the cord appears fine, please flip the device upside-down and unscrew the 4 screws on the bottom.

Step 3



- Remove the bottom panel and unclip the power cord from the panel.

Step 4



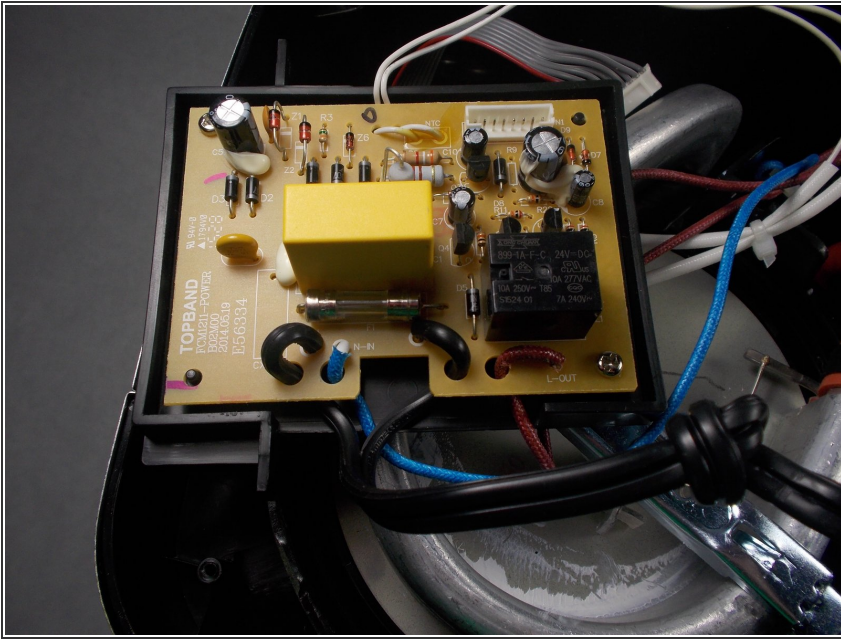
- With the front facing towards you upside down, to the top left of the circular hotplate is a beige circuit board with two screws on either side holding it in. Please unscrew them.

Step 5



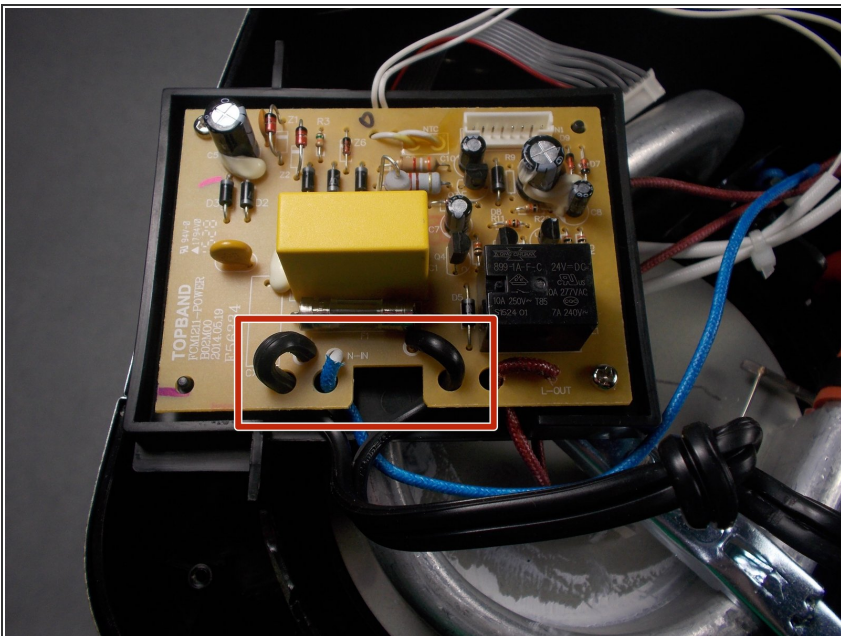
- Carefully remove the circuit board and unplug the gray ribbon wire that is plugged into it.

Step 6



- Check to see if the power cord is connected properly to the circuit board.

Step 7



- Strip the wire and twist with the other or solder it back on.

To reassemble your device, follow these instructions in reverse order.