



# DELL 2335 DN CMOS Battery Replacement

DELL 2335 DN CMOS Battery Replacement

Written By: Michael S.



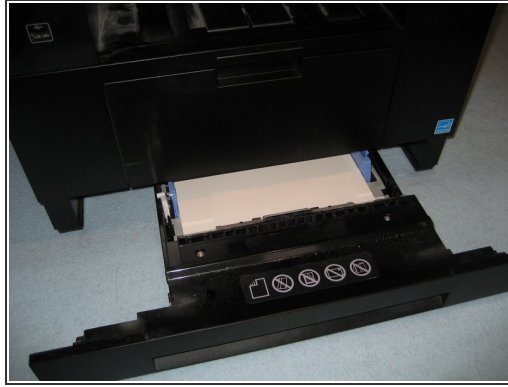
**TOOLS:**

- [Phillips Screwdriver](#) (1)

**PARTS:**

- [CR2032 Lithium Battery](#) (1)

## Step 1 — Remove attachments



- Remove power cord, network cable, etc.
- Remove paper tray and rear paper guide.

## Step 2 — Remove the cover of the expansion slot



- Slide the cover of the expansion slot backwards and open.
- Unhook the flap from the lower hinge.

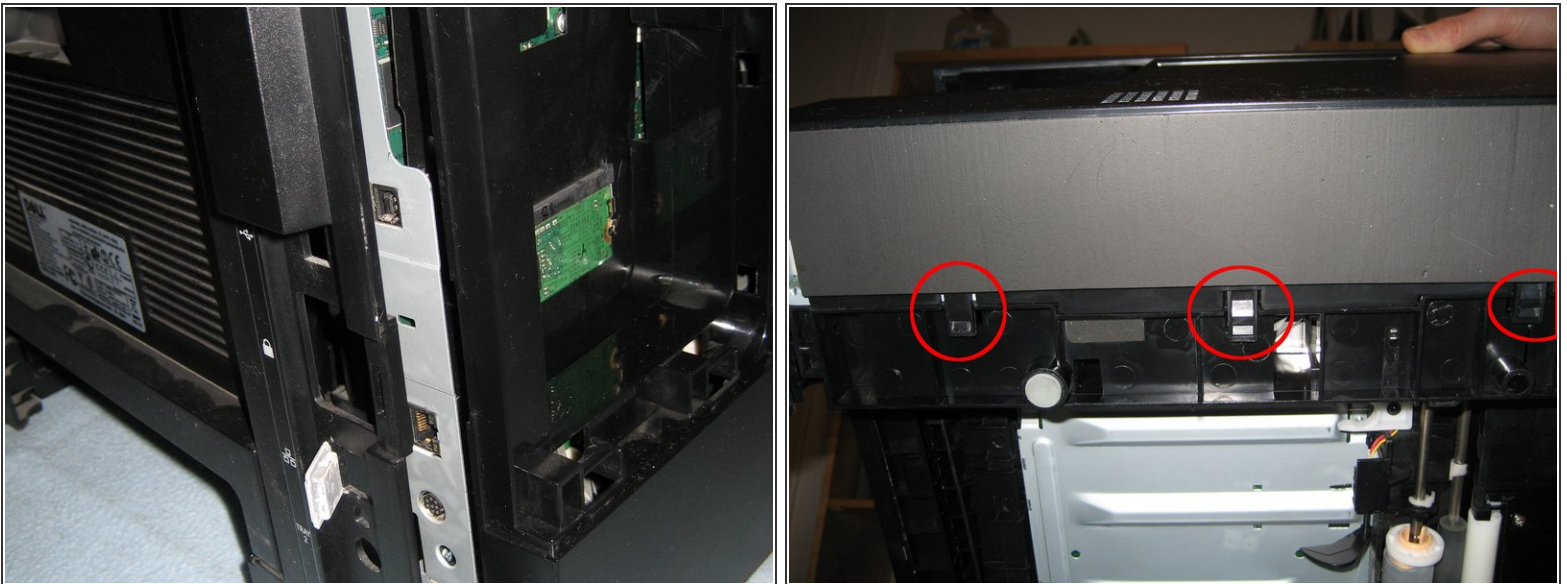


### Step 3 — Release left housing part



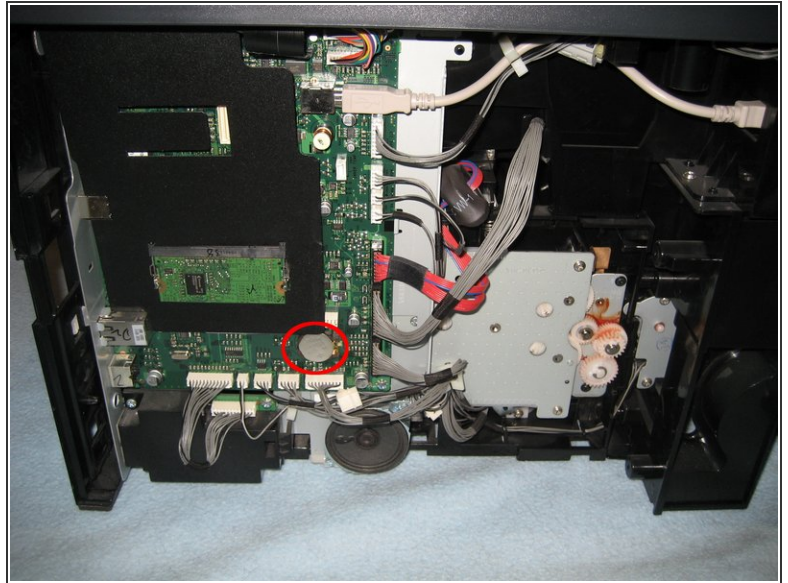
- Loosen and remove front screws (1x top, 1x bottom) and rear (1x top, 1x bottom) with Phillips screwdriver.

### Step 4 — Remove left housing part



- Carefully loosen the front and rear housing parts with a light pull from the left.
- Remove the left housing by carefully loosening the 3 clamps on the floor.

## Step 5 — Replace Battery



- Replace battery.

Repeat the steps in order to reassemble your device.