



DJI Mavic Pro Top Case Removal

Written By: Andrew spoelstra





PARTS:

- [DJI Mavic Pro Upper Shell](#) (1)
-

Step 1 — Remove Battery



- To start removing screws, you must first remove the battery, by squeezing the sides of the battery, as shown in the photos, and lighting it up and away from the drone.

Step 2 — Remove screws under the battery



- There are 6 screws on the top of the drone. Four of them are located under the battery, and the other two are right on the back end of the drone. They are all 5.8mm long, and have a 1.5mm hex head, I, however, found that they are easier to remove using a T6H Torx bit.

Step 3 — Remove Screws on the Bottom



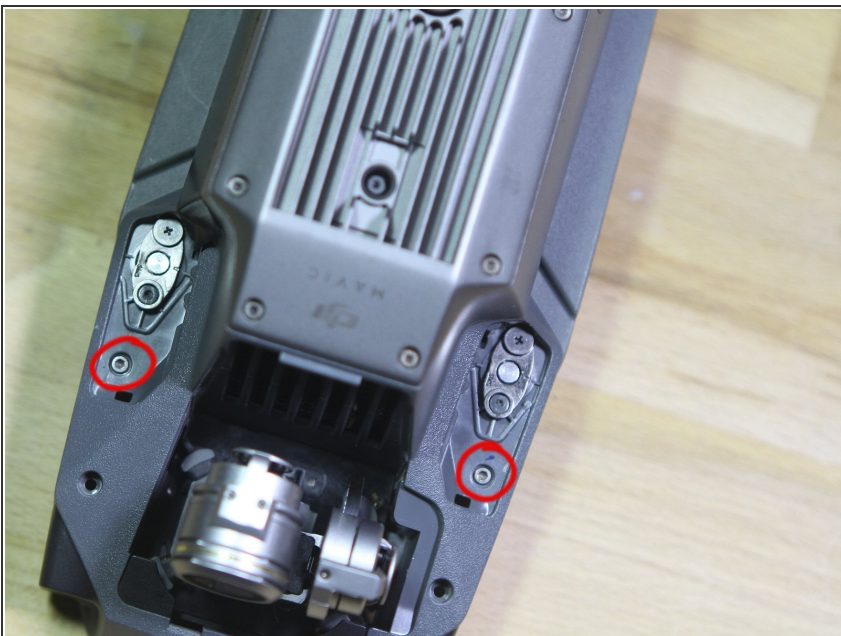
- Now, flip over the drone, and orient it with the camera facing you. You should remove the camera/gimbal cover at this point, but its probably a good idea to leave the gimbal brace in place.
- Remove the four closest screws circled in red. The ones closest to the front are 5.8mm long, with a 2mm diameter, while the ones closer to the rear of the drone are 4.8mm long, with a 1.5mm diameter. Be careful not to confuse these screws when reassembling the drone.

Step 4 — Remove the Plastic Covers That Cover the Front Arm Hinge



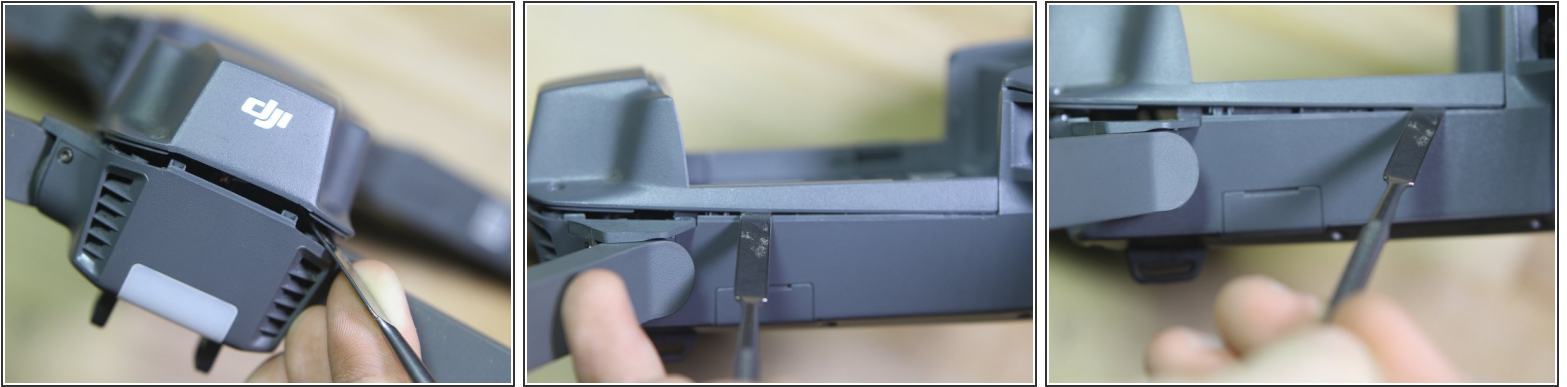
- There are screws under these covers, which need to be removed, as they hold the top plate in place. To do this, you need to take something sharp, a flat edge hobby knife, for example, and pop the cover up out of place in the front end, and then work your way around to the rear of them, once you get to the back, it should pop right off.
- You will need to do this on both the left and right side of the drone.
- My apologies, the wrong area is in focus in these pictures, but I feel that they can still serve their purpose adequately.

Step 5 — Remove the Screws Under the Front Arm Covers



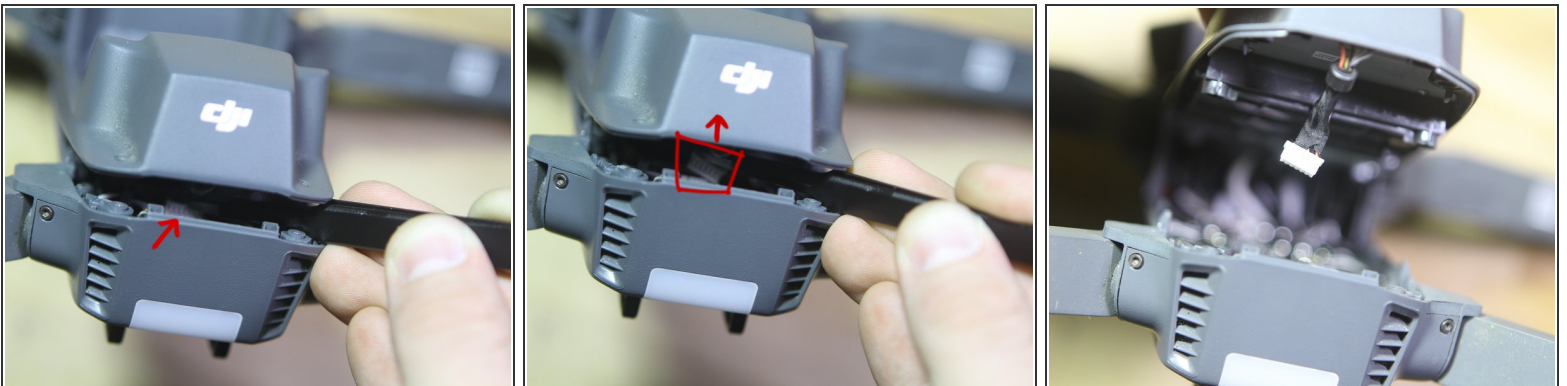
- There are two 1.5mm hex screws, these are 5.8mm long, with a 2mm diameter. These are thicker than the screws holding the covers down, because those screws are only holding the covers down, while the screws under it are holding the top cover down. Take note of this during reassembly.

Step 6 — Pry up Rear Case



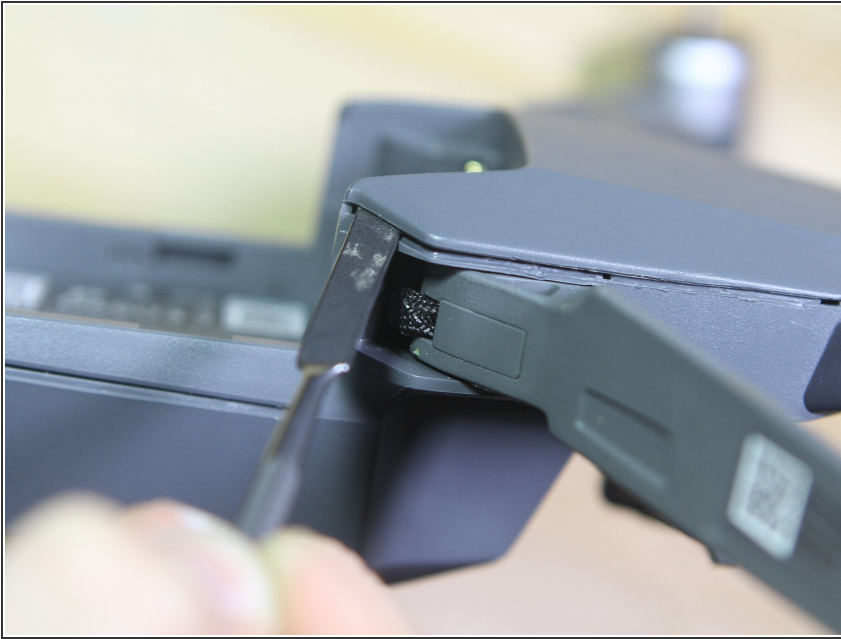
- First, turn the drone over, so it is right side up, and facing away from you. Now, use a metal spudger to pry open the rear end of the case. Be careful not to pull too far up, as there is still a cable which is connecting the two pieces.
- Slide the sludge down the length of each side, undoing all the clips along the way, stop 1-2 cm before the ending of the battery cradle.

Step 7 — Disconnect GPS From Logic Board



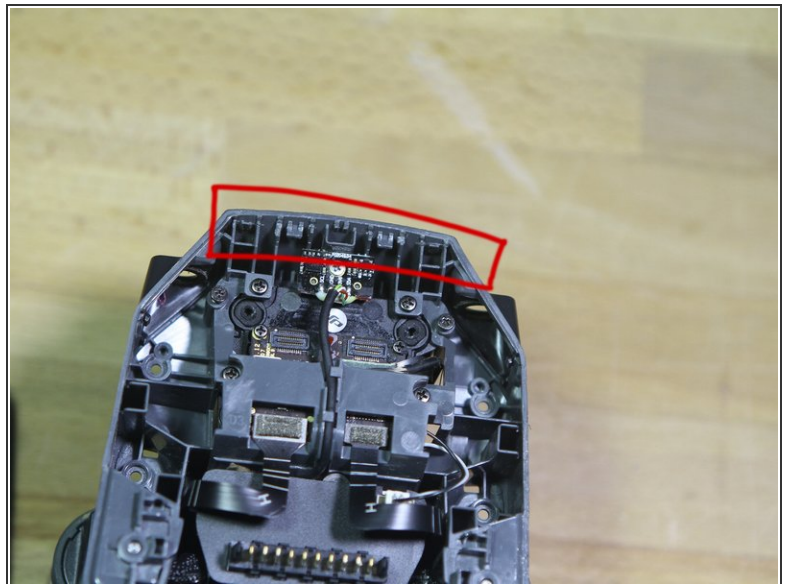
- Gently lift up the rear of the top case .5-1mm, and insert a pair of tweezers, grab the black cloth shielded cable connecting the top and bottom, and gently pull it up and away from the bottom board. The rear should lift freely up from the case 2-3mm.

Step 8 — Remove Front End of Top Cover



- Insert your metal spudger in between the top and bottom case on both the left and right sides of the drone, as shown in the photo. Pry up gently until it is free.

Step 9 — Unhinge Front Edge of Top Cover



- This part is tricky. There are four clips folding the front edge in place. Half are facing one direction and half are facing the opposite direction. Be gentle and careful when disengaging them. The photos here, show the locations and directions of the clips.

To reassemble your device, follow these instructions in reverse order.