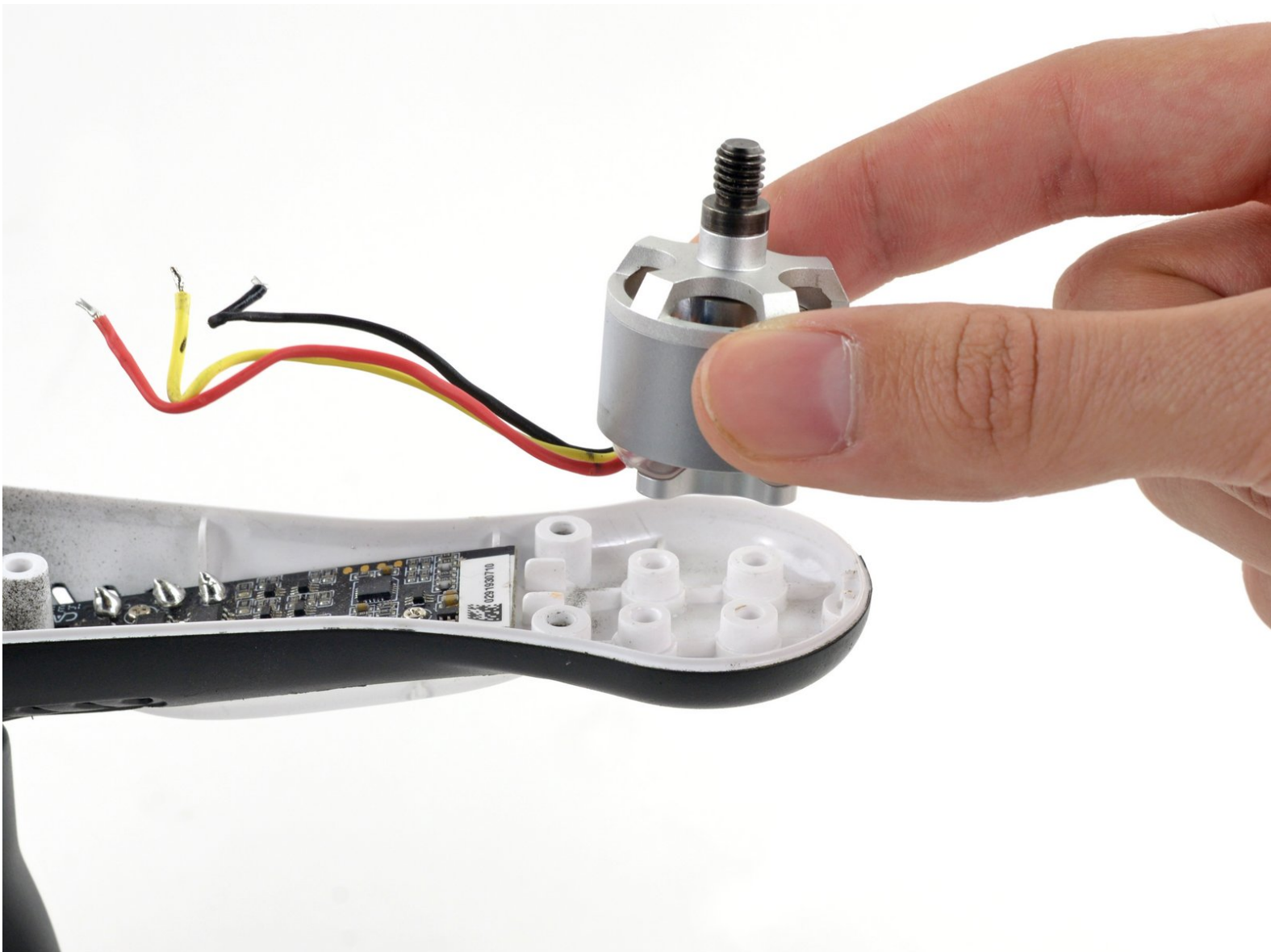




# DJI Phantom 2 Vision+ Motor Removal

Follow this guide to remove and replace motors in your DJI Phantom 2 Vision+.

Written By: David Hoyt



## INTRODUCTION

Replace or upgrade your Phantom motors. This guide requires soldering. **Each motor's direction is determined by the order of its leads on the ESC, so during the replacement, be sure to match the original order.** Motors on opposite arms will have the same direction, so check the opposite arm for a wiring reference.

If you're ordering a replacement, be sure to get the right thread direction for your motor, or the propellor collet will loosen during flight.

Note: the drone used in this guide probably looks different from yours! It's just a custom paint job, otherwise it's completely stock.



### TOOLS:

- [Soldering Iron](#) (1)
- [2 mm Hex Screwdriver](#) (1)
- [Tweezers](#) (1)
- [Phillips #0 Screwdriver](#) (1)



### PARTS:

- [DJI Phantom 2 CW Motor](#) (1)
- [DJI Phantom 2 CCW motor](#) (1)

## Step 1 — Remove the battery



- Pinch the top and bottom tabs of the battery case, pull the battery straight out to remove it.
- i** The metal connectors form a stiff mechanical connection with the battery, you will need quite a bit of force to remove the battery. Hold the Phantom Vision+ with one hand and remove the battery with the other.

## Step 2 — Propellers



- Determine if the propeller is clockwise or counter-clockwise rotating.
- ❗ Each arm is labeled with a rotation icon that shows the direction of propeller rotation.
- If this icon is missing or you can't read it, you can determine the direction of rotation by examining the propeller.
- ❗ A clockwise rotating propeller pushes air down while rotating clockwise, and the opposite is true for a counter-clockwise rotating propeller, and the propeller blade slopes up in the direction of rotation.

## Step 3 — Removing clockwise rotating propellers



- Loosen a clockwise rotating propeller by holding the motor with one hand and spinning the propeller clockwise.
- Remove the propeller.



## Step 4 — Removing counter-clockwise rotating propellers



- Loosen a counter-clockwise rotating propeller by holding the motor with one hand and spinning the propeller counter-clockwise.
- Remove the propeller.

## Step 5 — Case Top Shell



- Remove the following screws from the underside of the Phantom:
  - Twelve 2.0 mm hex bolts
  - Four Phillips #00 screws

## Step 6



- Gently lift up the top shell case.

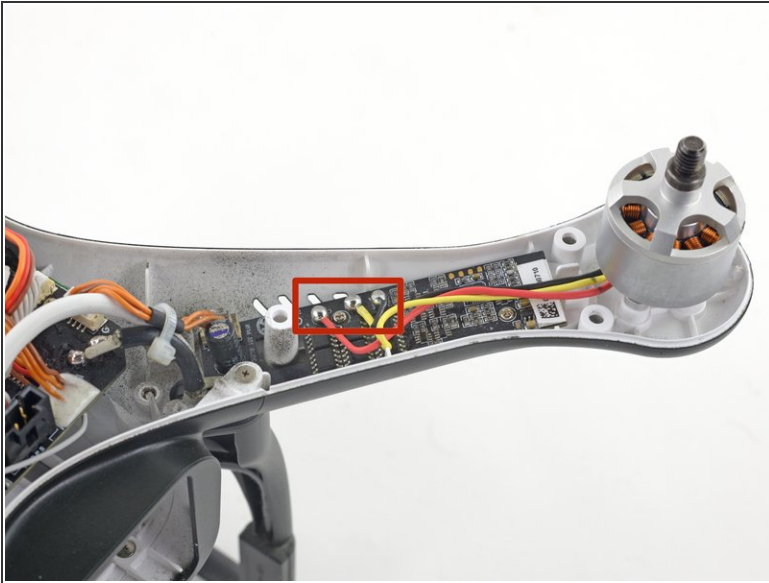
**⚠ Do not** attempt to fully remove the top shell. The GPS cable is still attached to the mainboard, avoid lifting the case too high or you may damage this connection.

## Step 7 — Unplug GPS connector and remove case



- The GPS cable molex connector is located on the backside of the mainboard, near the battery opening.
- Pull the GPS connector straight up out of its socket.
- Lift the top shell case up and remove it from the body of the Phantom.

## Step 8 — Desolder motor wires



- Desolder all three motor wires.

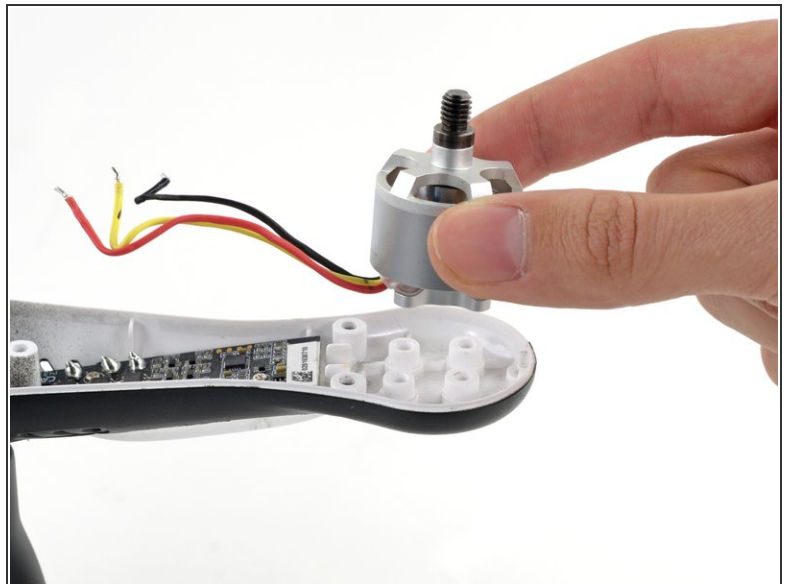
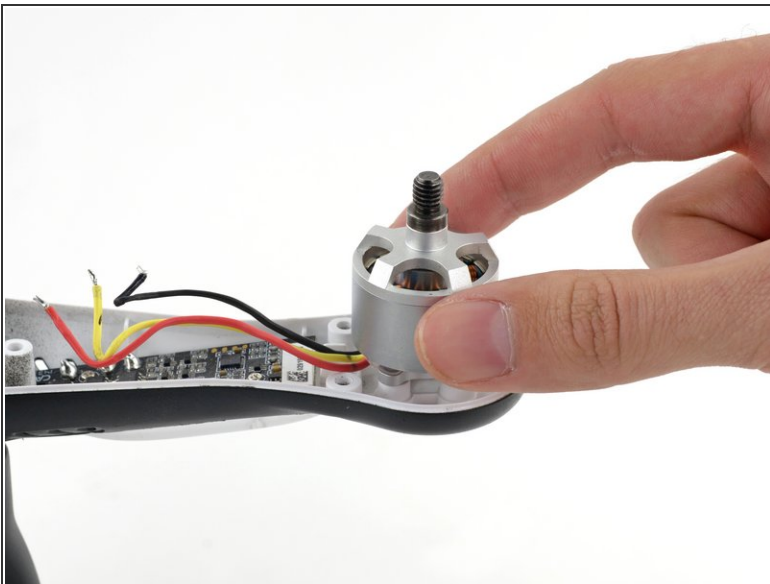
- ✦ When replacing a motor, be sure to solder the new motor in following the same wire color order as when you removed it.
- ⓘ The motor spin direction is dependent on the order of the wires, and may not match this image exactly. If you forgot the order, check the arm directly opposite for reference.

## Step 9



- Remove the four 2mm hex motor bolts.

## Step 10



- Remove the motor from the motor mount.

To reassemble your device, follow these instructions in reverse order.