



# DJI Phantom 3 Advanced Cover Replacement

Replace the plastic shell of the phantom 3 advanced.

Written By: Robert Comstock



---

## INTRODUCTION

This guide will illustrate the needed steps in removing the plastic shell from the DJI Phantom 3 Advanced. This includes the removal of screws that secure the two halves of the shell together. This guide also informs how to safely remove the top shell after it is unscrewed. This is a process required for removing several other components.



### TOOLS:

- [T8 Torx Screwdriver](#) (1)
  - [T6 Torx Screwdriver](#) (1)
  - [Heavy-Duty Spudger](#) (1)
-

## Step 1 — Battery



- With the battery facing you, locate the two tabs on the top and bottom of the battery as shown.

⚠ Remember to disarm and power down your quadcopter before beginning any disassembly.

## Step 2



- Press the two tabs with your finger and thumb, and gently slide the battery towards you, out of the quadcopter frame.
- With your other hand, be sure to hold the quadcopter steady to ensure that it stays still.

## Step 3 — Cover



- Turn the Phantom 3 Advanced upside down.

## Step 4



- Remove the four 7mm long 2mm screws with a T-6 screwdriver.
- ⓘ There is one screw per arm, located at the tip of the arm.

## Step 5



- Remove the eight 5mm long 2.5mm screws using the T-8 screwdriver.


- ⓘ There are two 5mm screws on each arm.



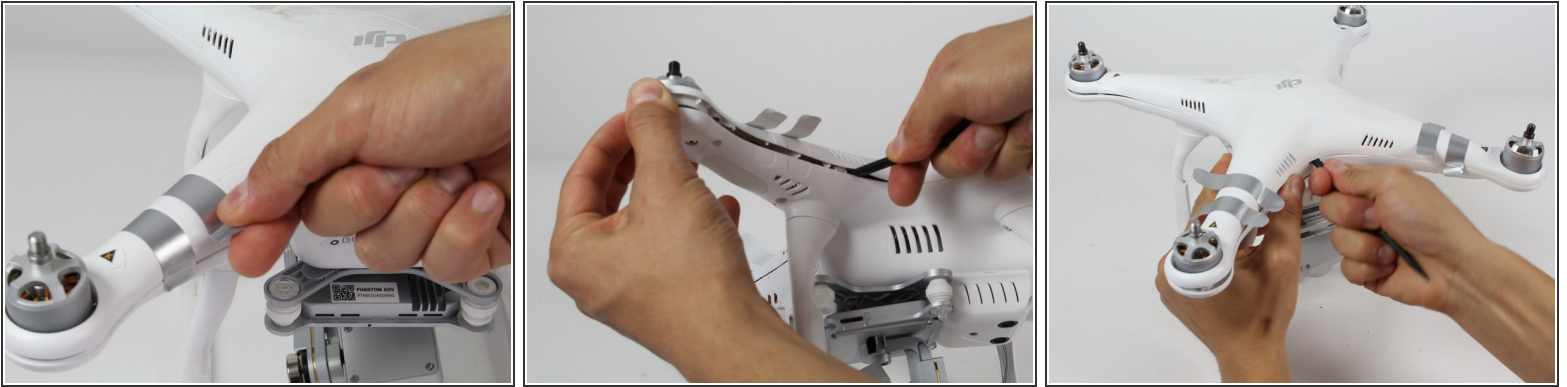
## Step 6





- Remove the four 10mm long deep 3mm screws using the T-8 screwdriver.

 There is one screw on each arm located near the landing gear.

## Step 7



- Carefully flip the phantom back over with the motors facing up.
  - Peel back the silver stickers from the seam in the cover.
  - Using a plastic spudger, slowly separate the two halves of the plastic shell.
-  This step requires some force, and the plastic will click loudly as the shell separates.
-  Do not fully remove the cover. There is a wire that needs to be detached from the control board before the cover is completely free.

## Step 8



- Slowly remove the upper half of the plastic case about halfway. There is a ribbon cable that's connects the cover and the control board.
- Follow the ribbon cable to the control board and locate the connector that connects the cable to the control board.
- Press the tab on the side of the connector and pull up on the cable.
- Continue to remove the shell the rest of the way.

To reassemble your device, follow these instructions in reverse order.