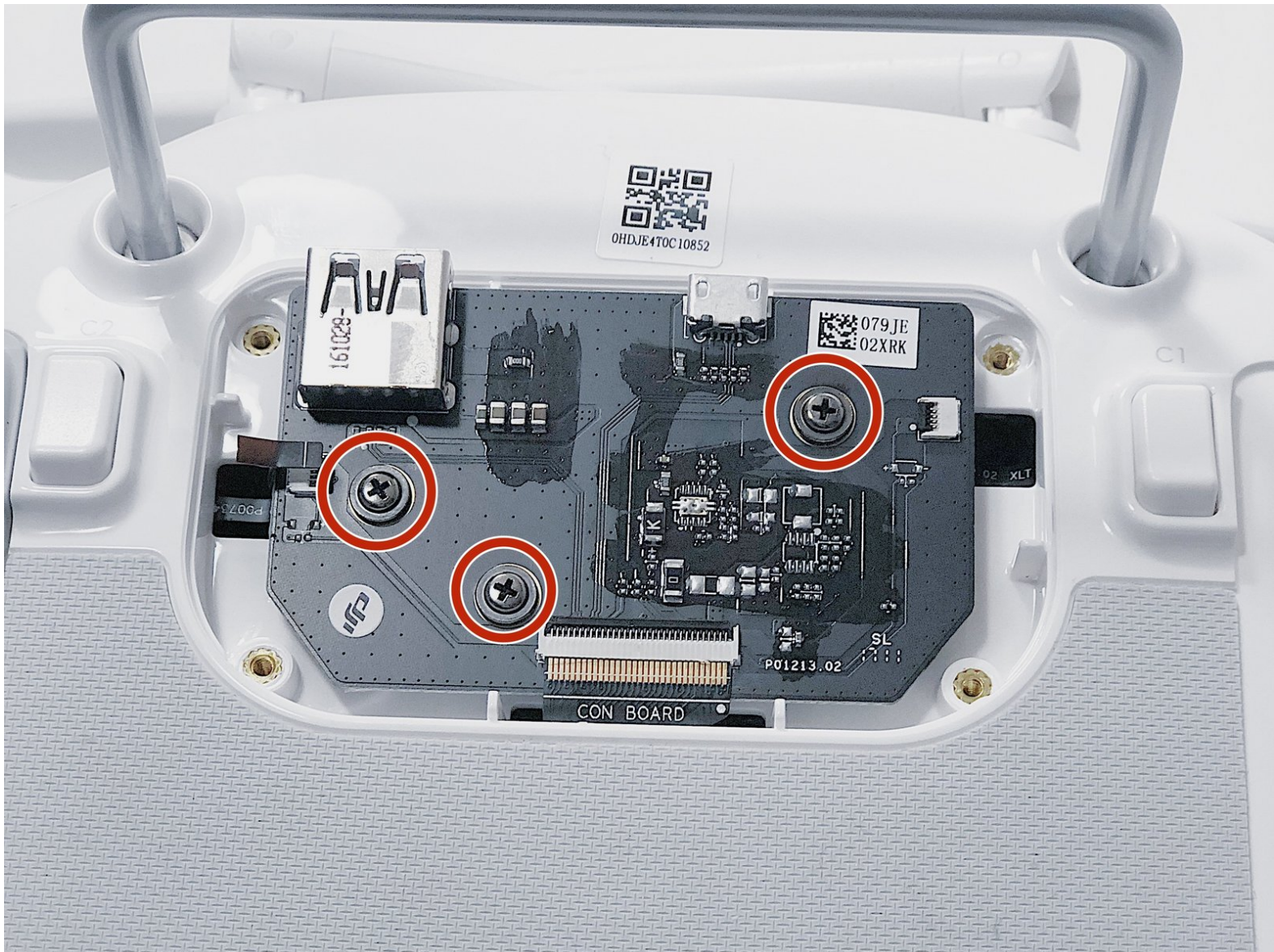




DJI Phantom 4 Advanced Remote Controller Back Con Board Replacement

The Con Board is located under the back cover.

Written By: Gunnar Behny



INTRODUCTION

A Back Con Board replacement guide for the DJI Phantom 4 Advanced Remote Controller Back Con Board Replacement.

The steps in the guide will assist in the event of any issues arising with the Remote Controller Back Con Board.



TOOLS:

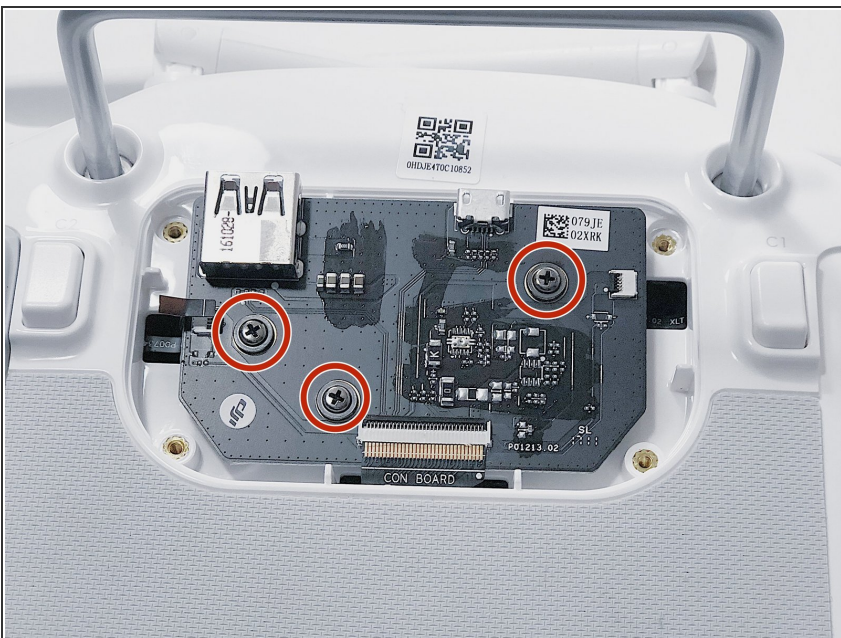
- [Spudger](#) (1)
 - [Tweezers](#) (1)
 - [T8 Torx Screwdriver](#) (1)
 - [Phillips #0 Screwdriver](#) (1)
-

Step 1 — Back Panel



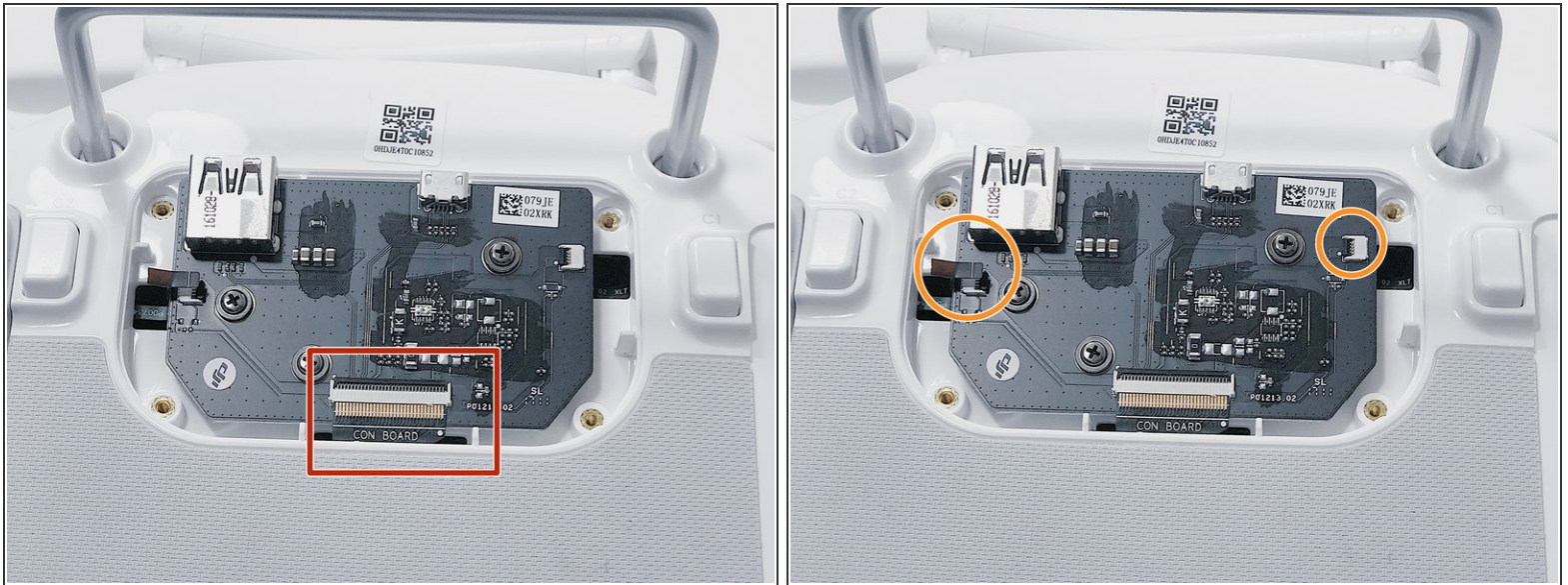
- Remove the four screws with a Torx T8 screwdriver to access the back con board.

Step 2



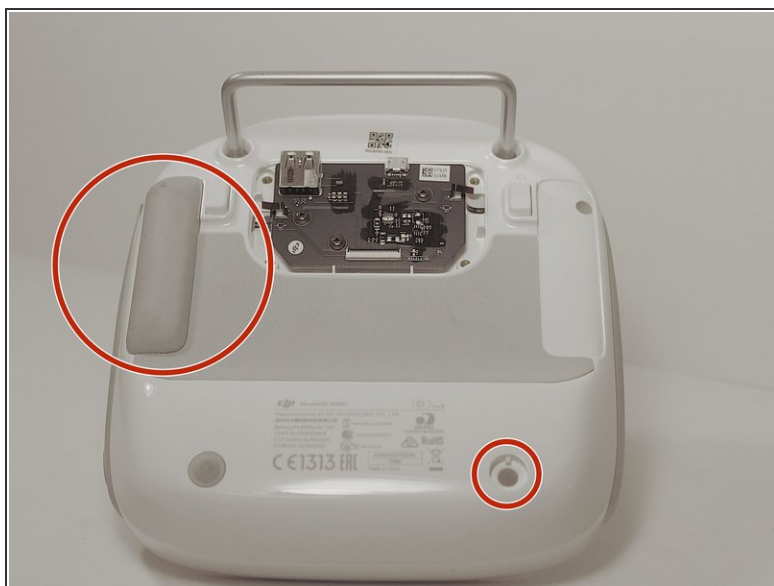
- Remove three screws using a Phillips #00 screwdriver.

Step 3



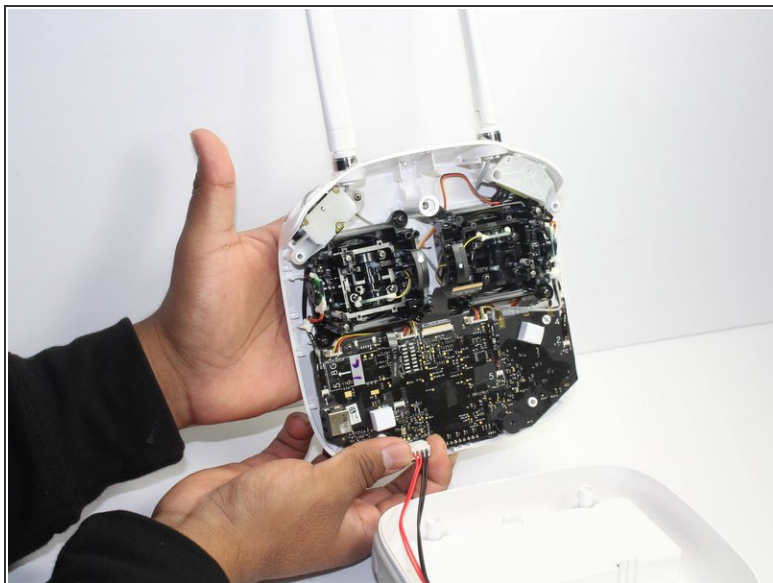
- With tweezers, gently remove the large con board tab.
- Use your hands to remove the two small clips. Pull out from the socket, in a horizontal direction.

Step 4



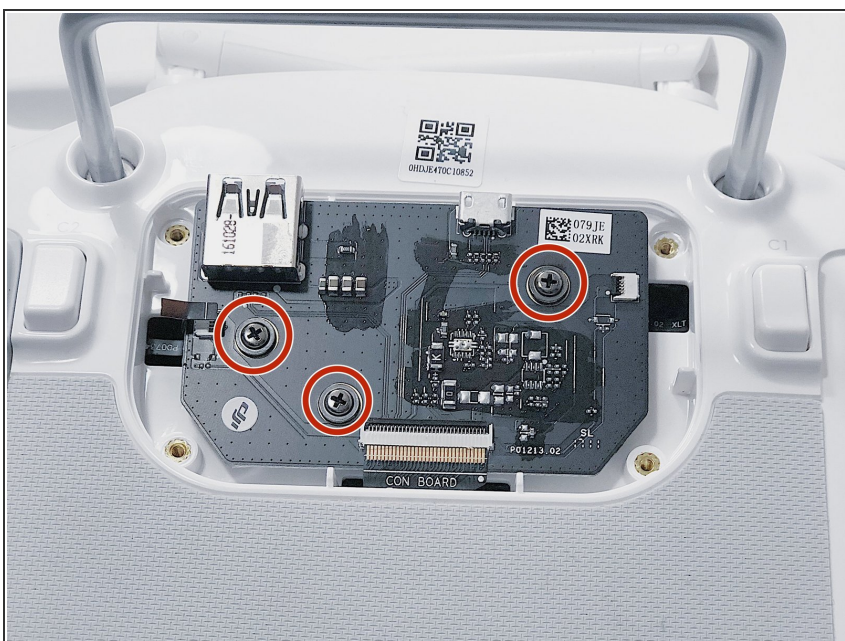
- Peel off the rubber grips to access the screw holes.
- ⚠ Make sure to save your grips and do not to get them stuck to anything, you are going to want to save the adhesive.
- Remove the back board and set it aside.

Step 5



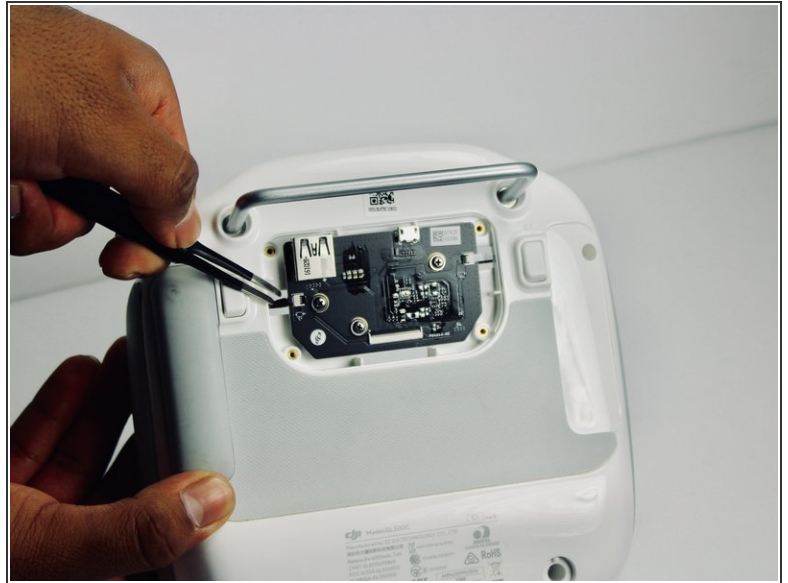
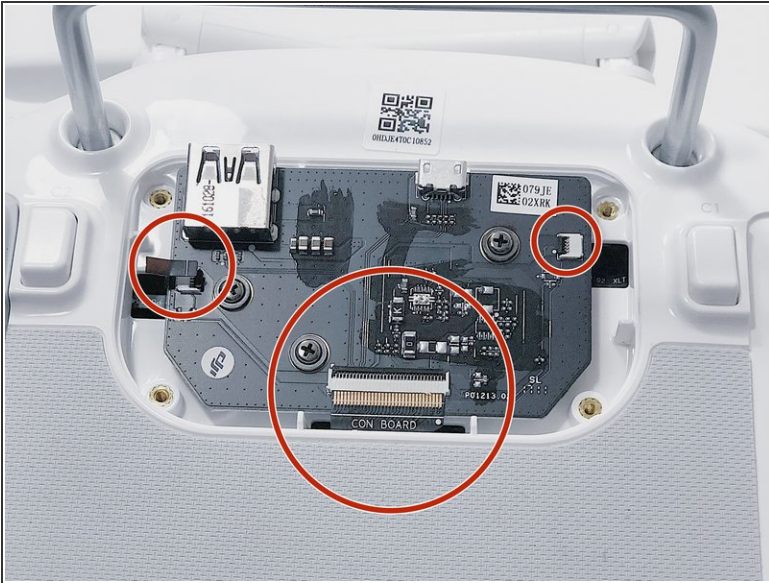
- Pull apart the back plastic panel.
- ⓘ Recommended tool for this would be the metal spudger, but not required.
- Once the back panel is off, you will have access to the motherboard.

Step 6 — Back Con Board



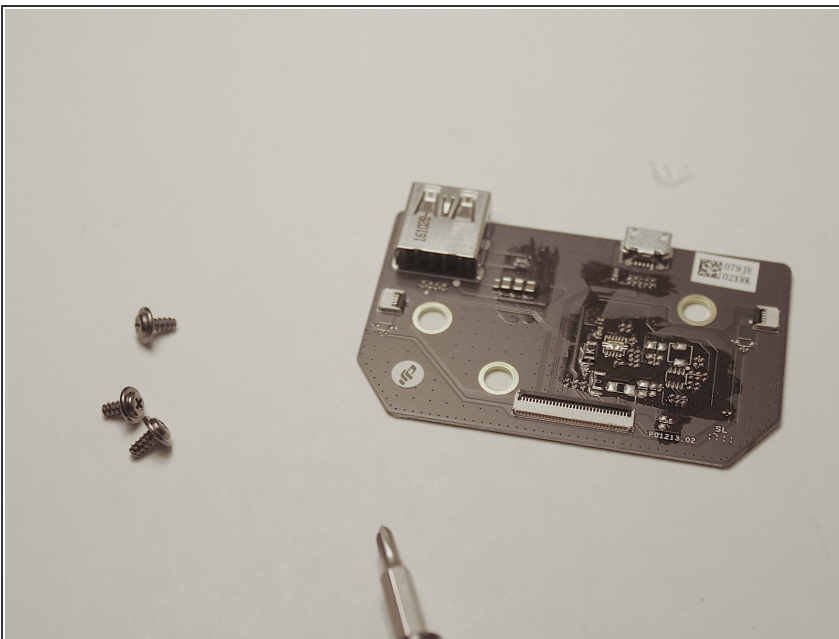
- Remove three screws

Step 7



- Pull off each tab. Pull in a horizontal direction out from the socket.
- Now you may remove the back board.

Step 8



- Once the board is out it is ready to be replaced.

To reassemble your device, follow these instructions in reverse order.