

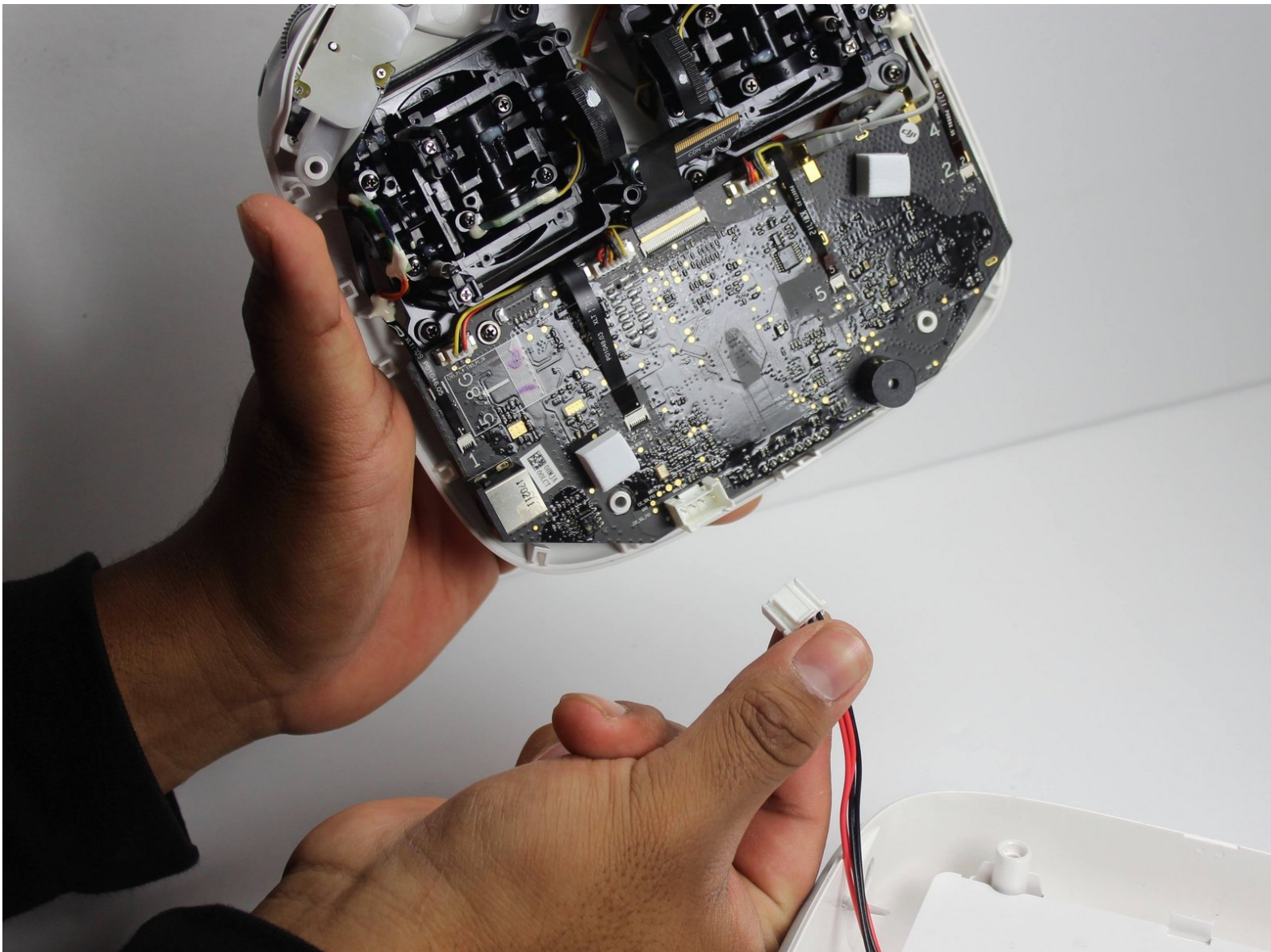


DJI Phantom 4 Advanced Remote Controller

Battery Replacement

The battery is attached to the back plastic and is towards the bottom the remote. First unplug the cord connected to the battery.

Written By: cade knott



This document was generated on 2020-04-04 07:24:28 AM (MST).

INTRODUCTION

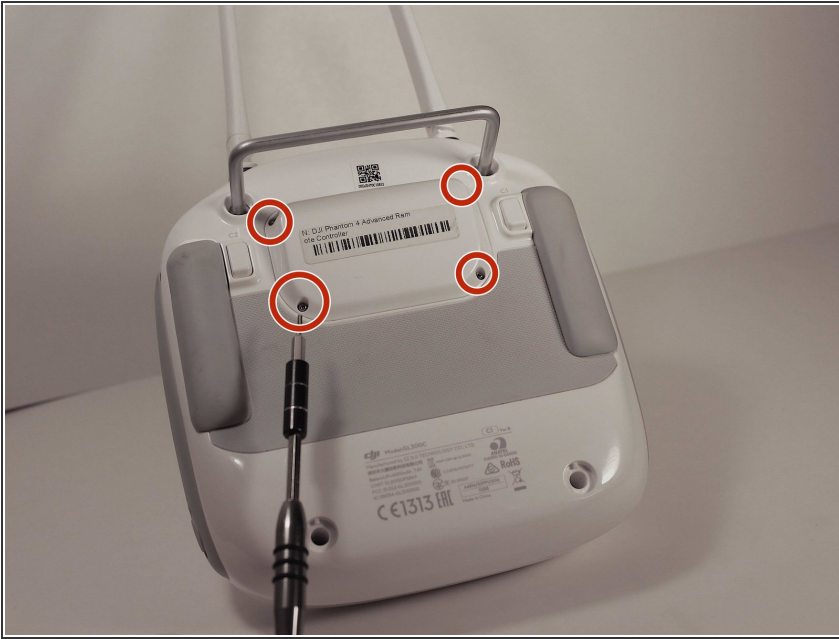
This guide provides instructions on how to replace the battery on the DJI Phantom 4 Advanced Remote Controller.



TOOLS:

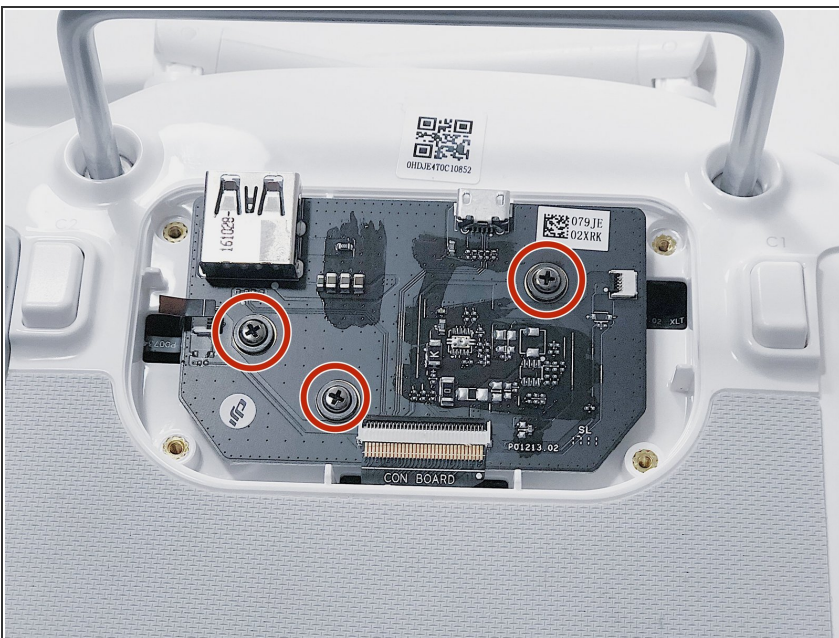
- [Spudger](#) (1)
 - [T8 Torx Screwdriver](#) (1)
 - [Phillips #0 Screwdriver](#) (1)
 - [Phillips #00 Screwdriver](#) (1)
 - [Tweezers](#) (1)
-

Step 1 — Back Panel



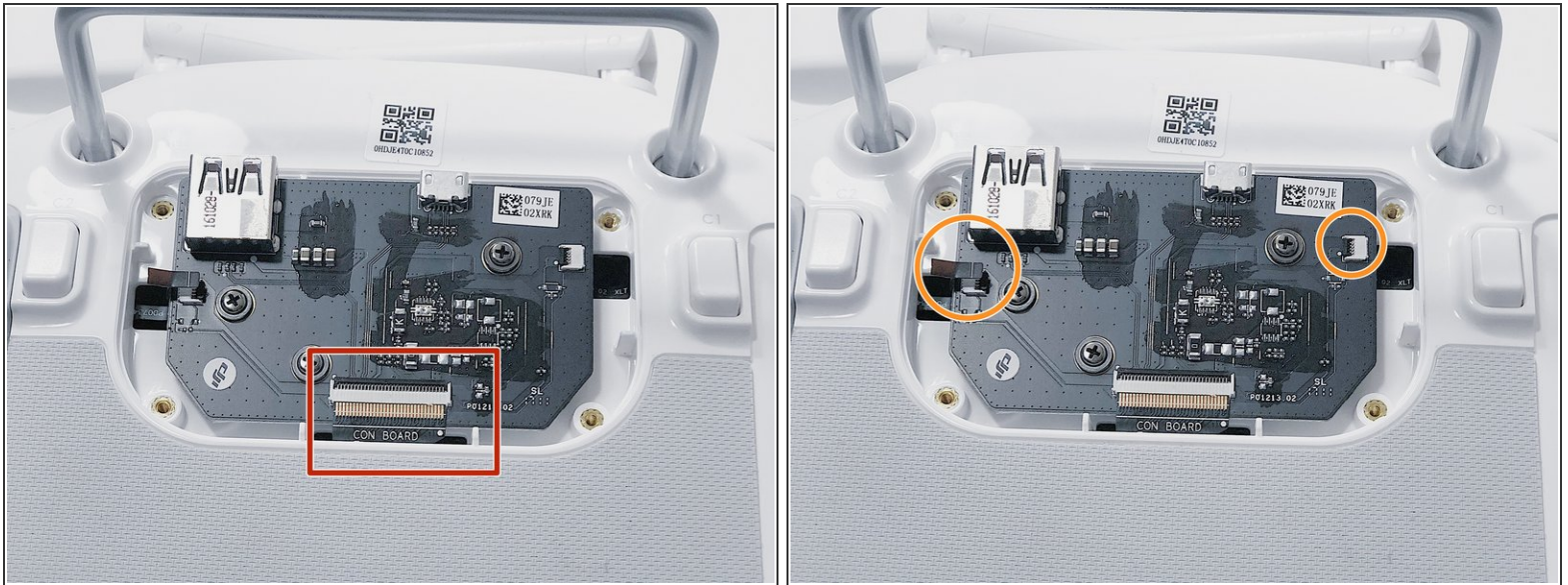
- Remove the four screws with a Torx T8 screwdriver to access the back con board.

Step 2



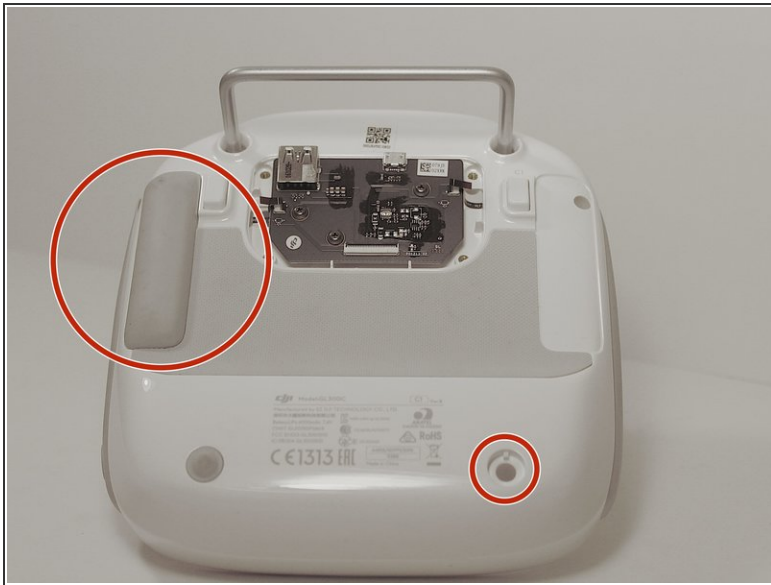
- Remove three screws using a Phillips #00 screwdriver.

Step 3



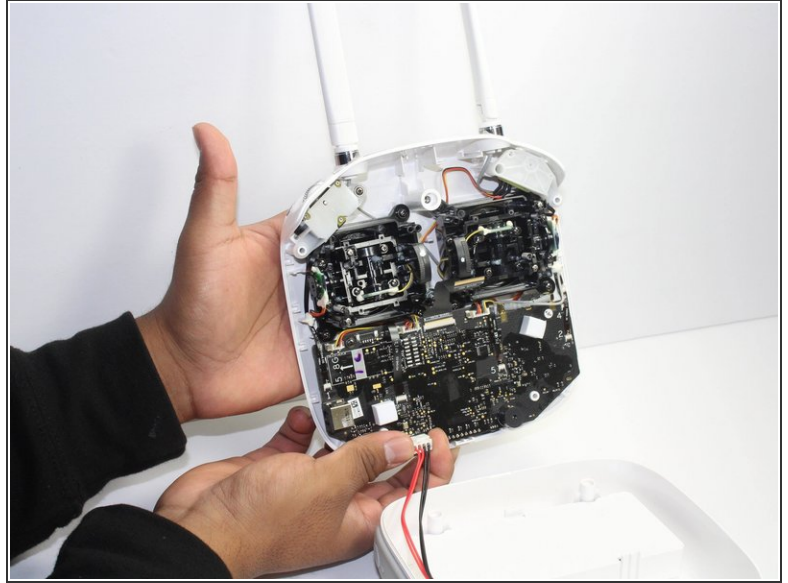
- With tweezers, gently remove the large con board tab.
- Use your hands to remove the two small clips. Pull out from the socket, in a horizontal direction.

Step 4



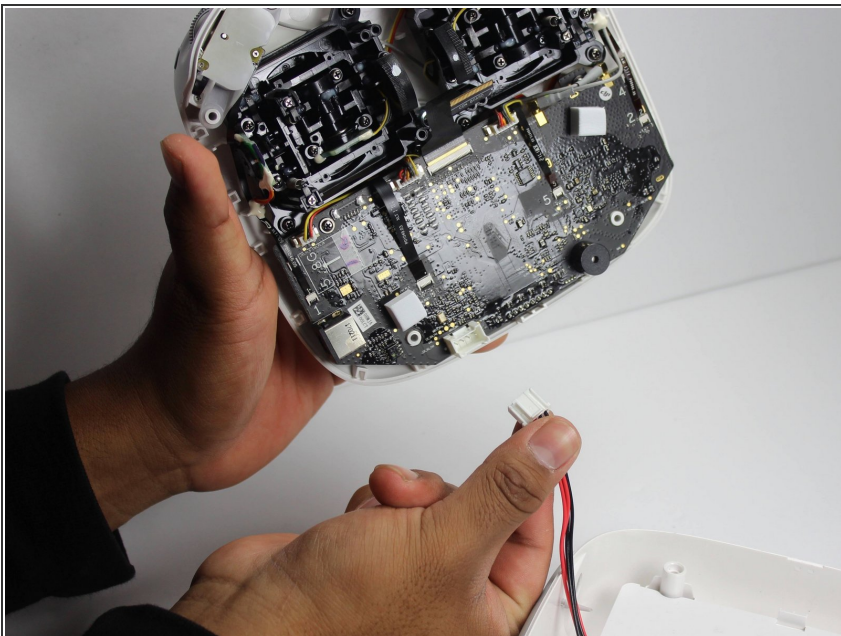
- Peel off the rubber grips to access the screw holes.
- ⚠ Make sure to save your grips and do not to get them stuck to anything, you are going to want to save the adhesive.
- Remove the back board and set it aside.

Step 5



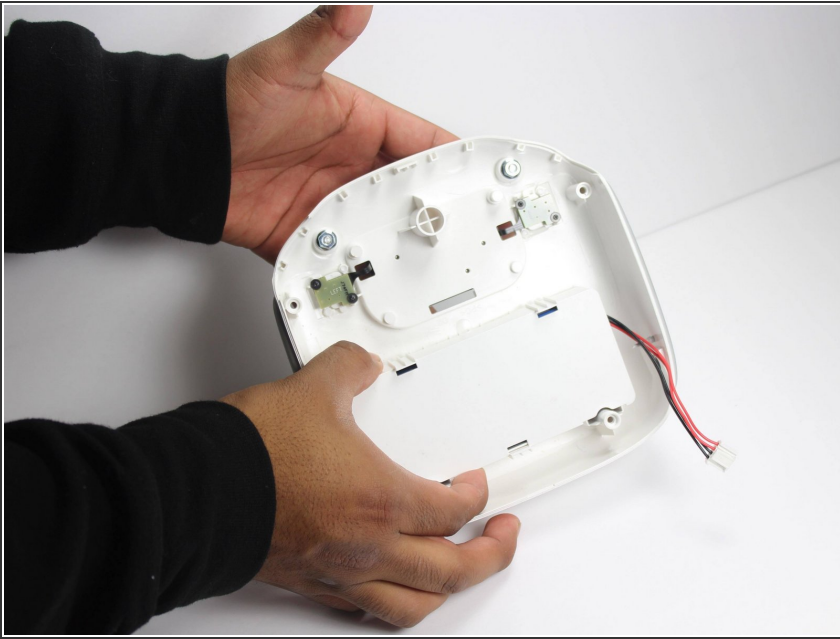
- Pull apart the back plastic panel.
- ⓘ Recommended tool for this would be the metal spudger, but not required.
- Once the back panel is off, you will have access to the motherboard.

Step 6 — Battery



- ⓘ The battery is attached to the back plastic, and is towards the bottom of the remote.
- Unplug the cord that is connected to the bottom of the main board.

Step 7



- After the cord is unplugged, remove the battery by lifting upon the plastic cover, which the battery is attached to.

Step 8



- Once the cover is off you can access the battery.

To reassemble your device, follow these instructions in reverse order.