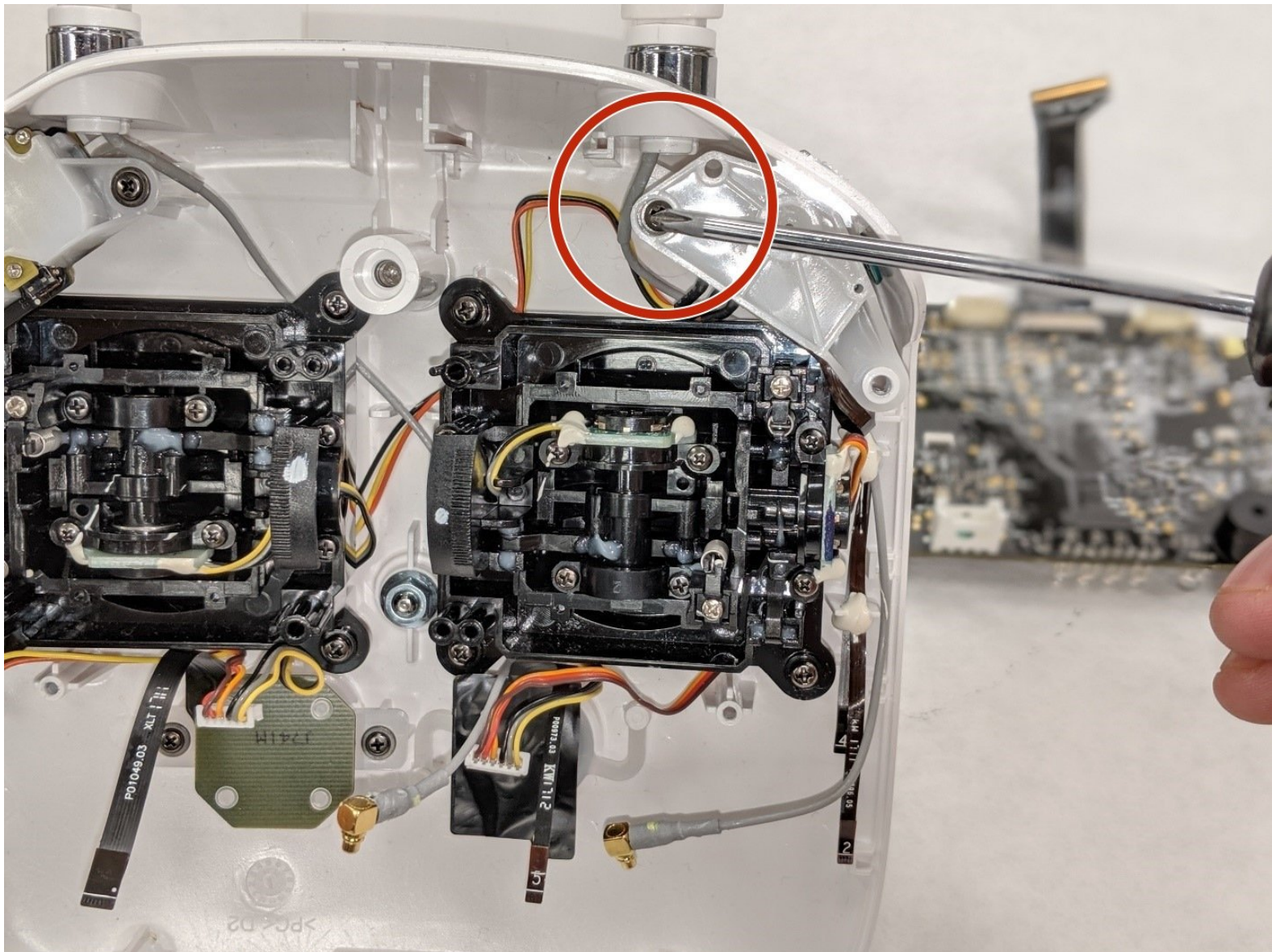




# DJI Phantom 4 Advanced Remote Controller Control Sticks Replacement

This guide will help you on how to replace the Control Sticks in your DJI Phantom 4 Advanced Remote Controller.

Written By: Abdullah Muslih Abdul Samad



## INTRODUCTION

This guide will demonstrate step by step detailed instructions on how to safely remove and replace the Control Sticks of a DJI Phantom 4 Advanced Remote Controller. Since this operation will require to disconnect the motherboard is highly recommended to start this task with the appropriate tools on hand as well as enough time.

During this process s lot of connectors are required to be unplugged with caution to avoid damages to other parts , compromising the functionality of the remote controller.

Someone might need to replace the control sticks because of faultiness such as, inaccurate navigation, drifting directions without input, and control stick not functioning at all.



### TOOLS:

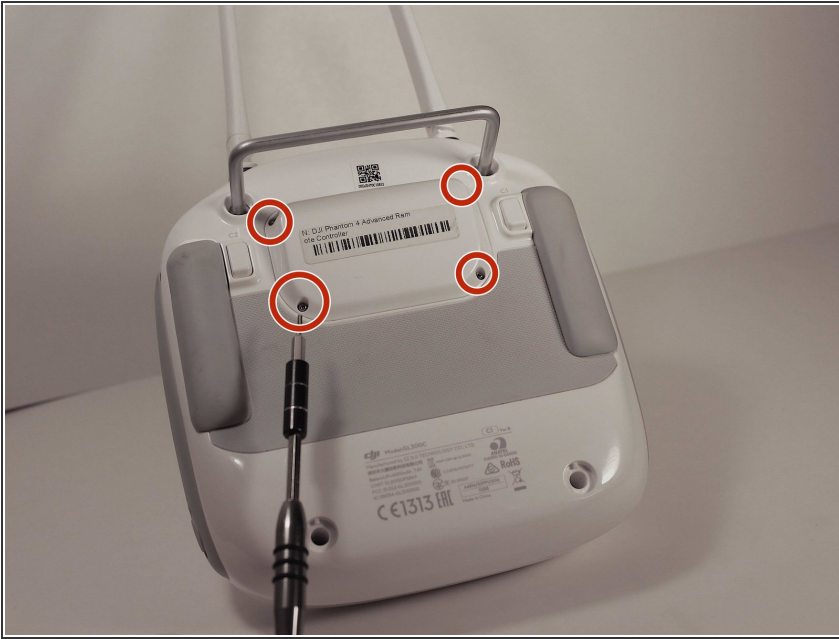
- [Spudger](#) (1)
- [Tweezers](#) (1)
- [T8 Torx Screwdriver](#) (1)
- [Phillips #0 Screwdriver](#) (1)
- [Phillips #00 Screwdriver](#) (1)
- [Phillips #1 Screwdriver](#) (1)



### PARTS:

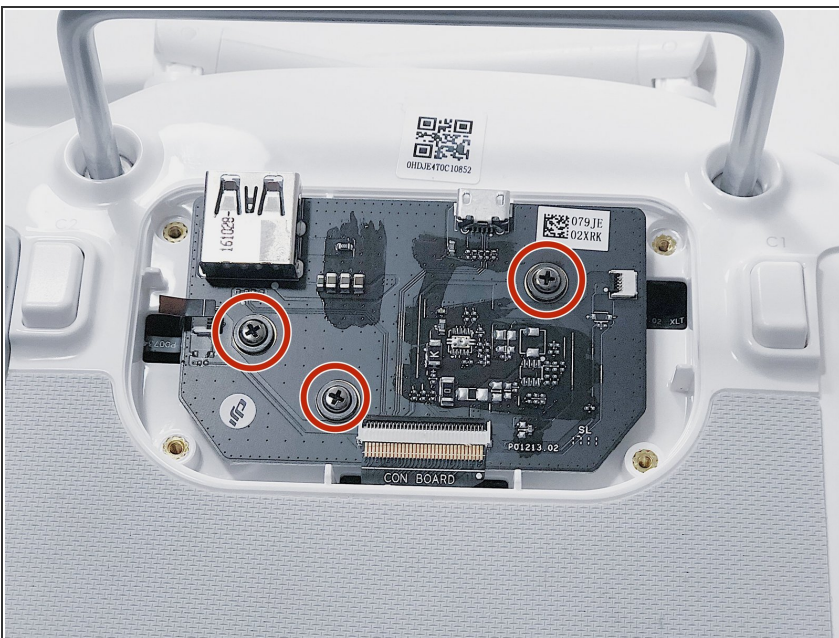
- [DJI Phantom 4 Advanced Remote Controller Lower Shell](#) (1)
- [DJI Phantom 4 Advanced Remote Controller Motherboard](#) (1)
- [DJI Phantom 4 Pro Remote Controller Control Sticks](#) (1)

## Step 1 — Back Panel



- Remove the four screws with a Torx T8 screwdriver to access the back con board.

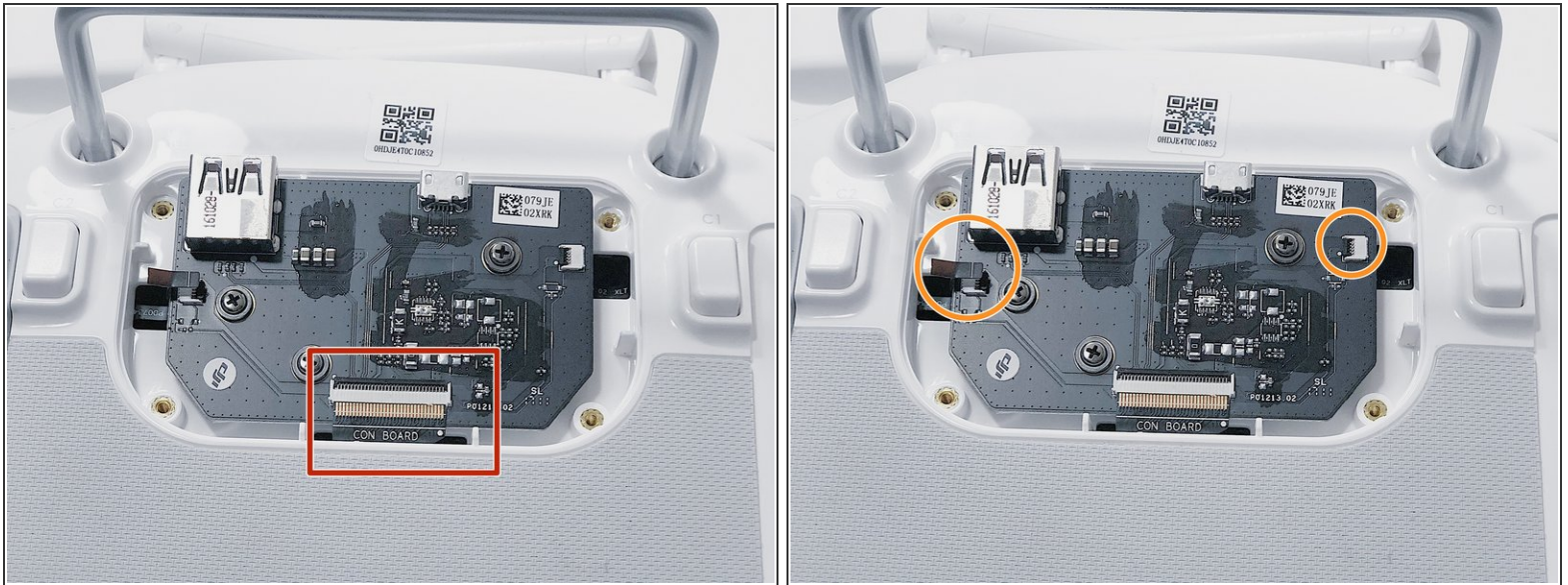
## Step 2



- Remove three screws using a Phillips #00 screwdriver.

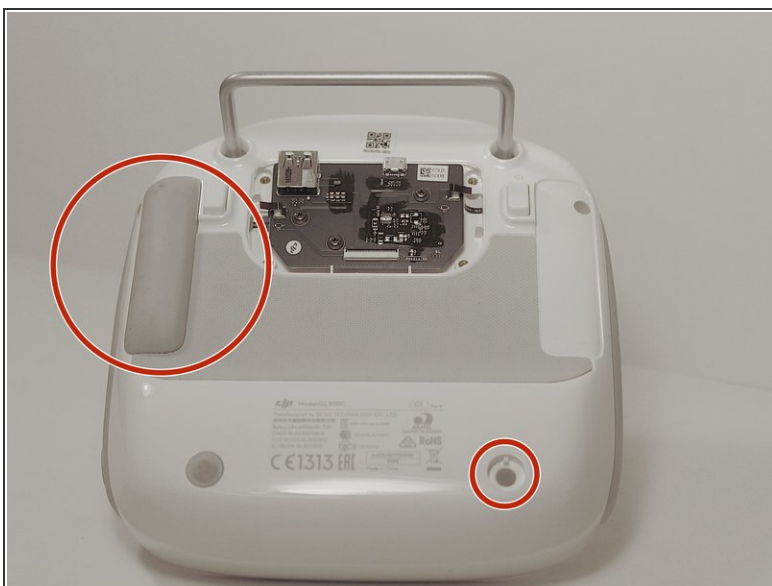


## Step 3



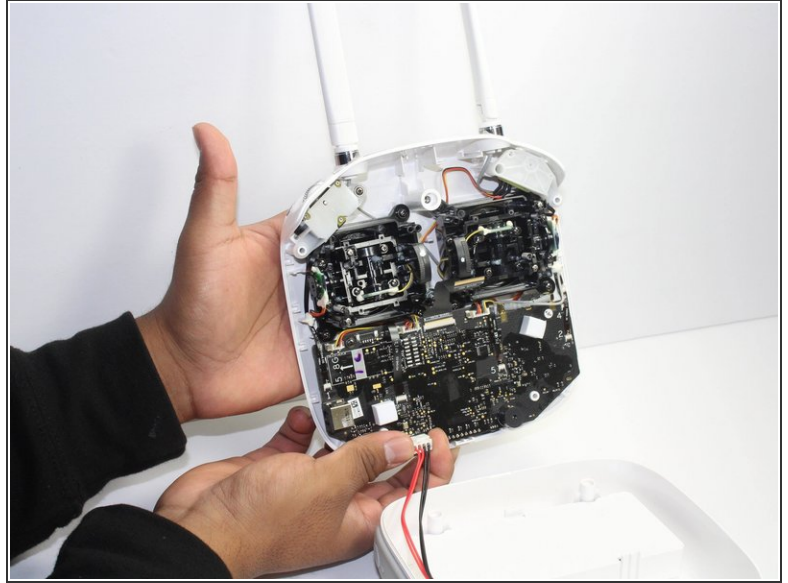
- With tweezers, gently remove the large con board tab.
- Use your hands to remove the two small clips. Pull out from the socket, in a horizontal direction.

## Step 4



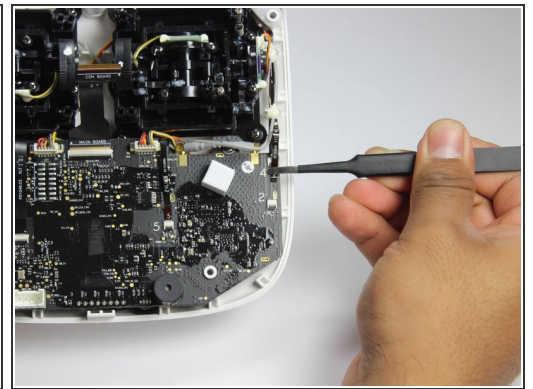
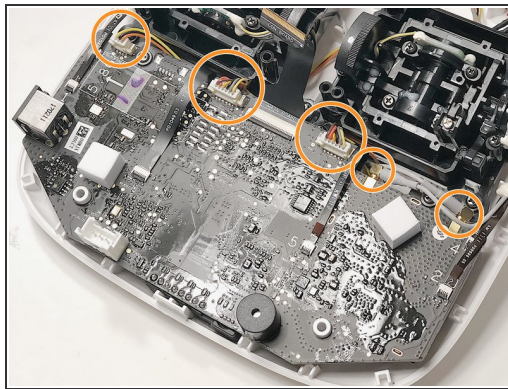
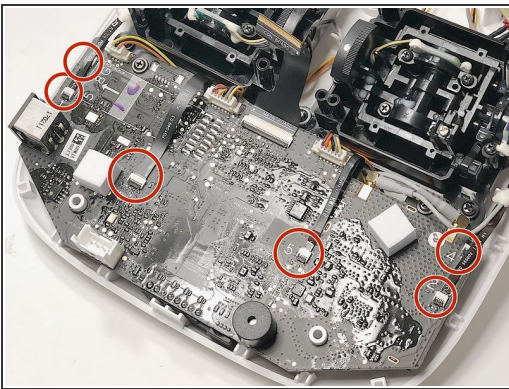
- Peel off the rubber grips to access the screw holes.
- ⚠ Make sure to save your grips and do not get them stuck to anything, you are going to want to save the adhesive.
- Remove the back board and set it aside.

## Step 5



- Pull apart the back plastic panel.
- ⓘ Recommended tool for this would be the metal spudger, but not required.
- Once the back panel is off, you will have access to the motherboard.

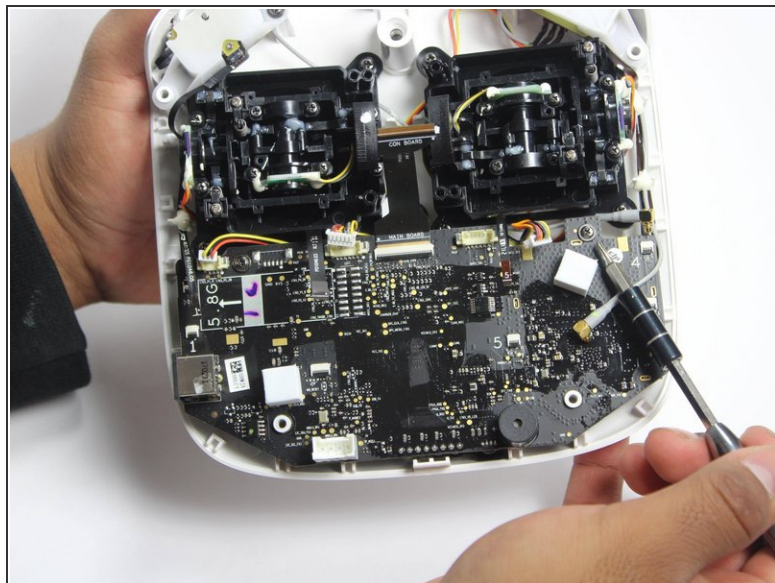
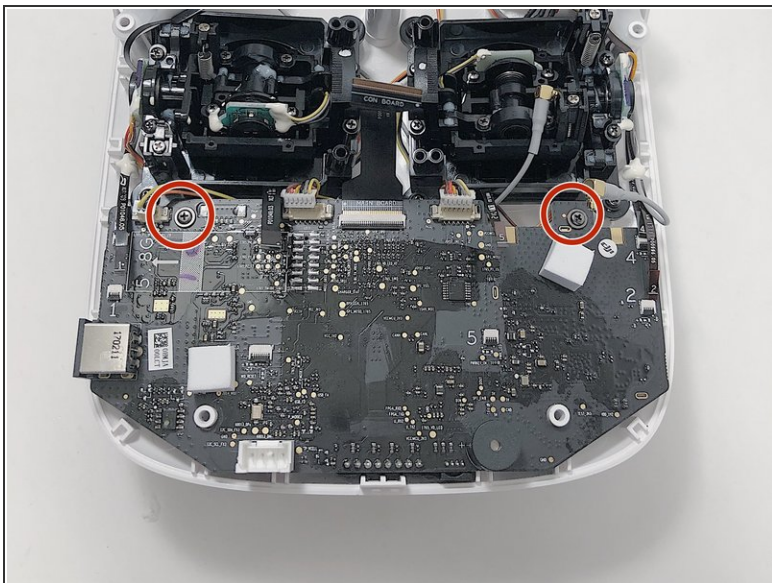
## Step 6 — Motherboard



- Disconnect ribbon tabs 1,2,5,8G, and 3.
  - Remove ribbon tab by pulling gently along motherboard. Do not pull straight out.
- Then remove the plugs




## Step 7



- With the Phillips #00 screwdriver, remove the two Phillips screws.

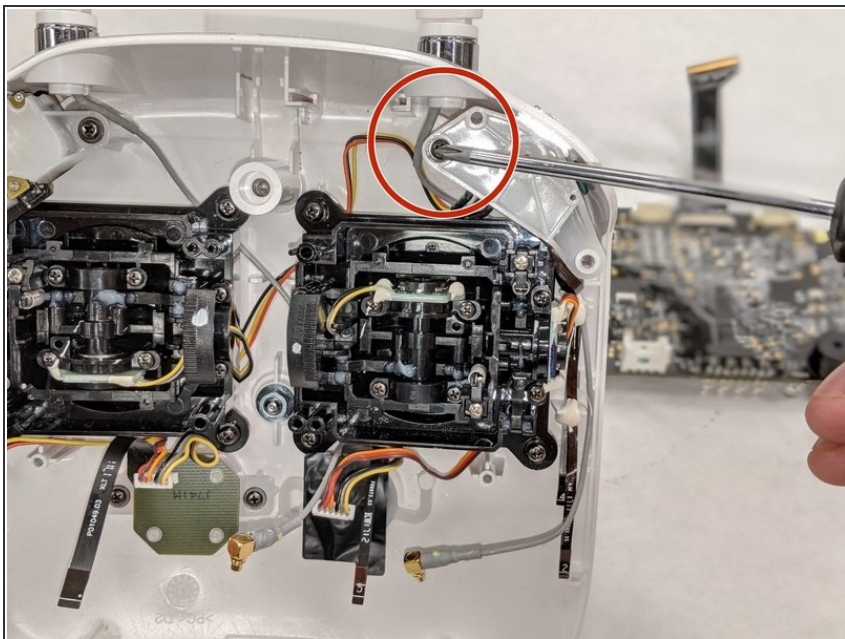
## Step 8



 Double check to make sure all tabs, plugs and screws are removed or disconnected.

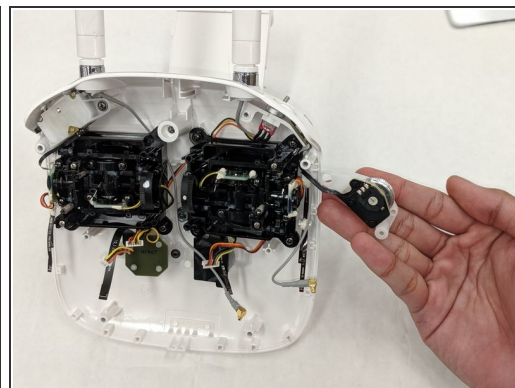
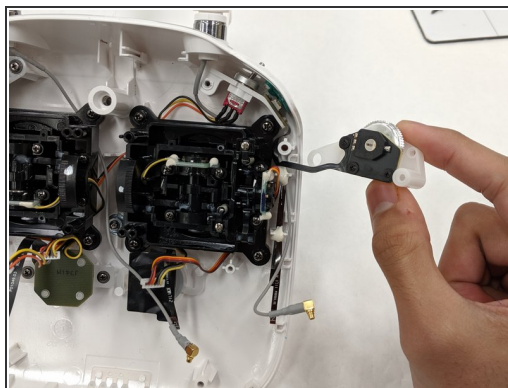
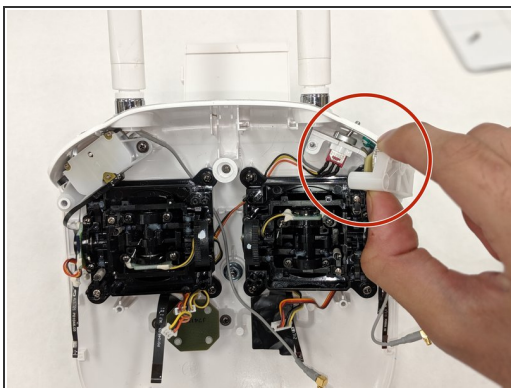
- Gently lift motherboard out of the case.

## Step 9 — Control Sticks



- Remove the 10.7 mm Phillips screws using a Phillips #1 screwdriver.

## Step 10

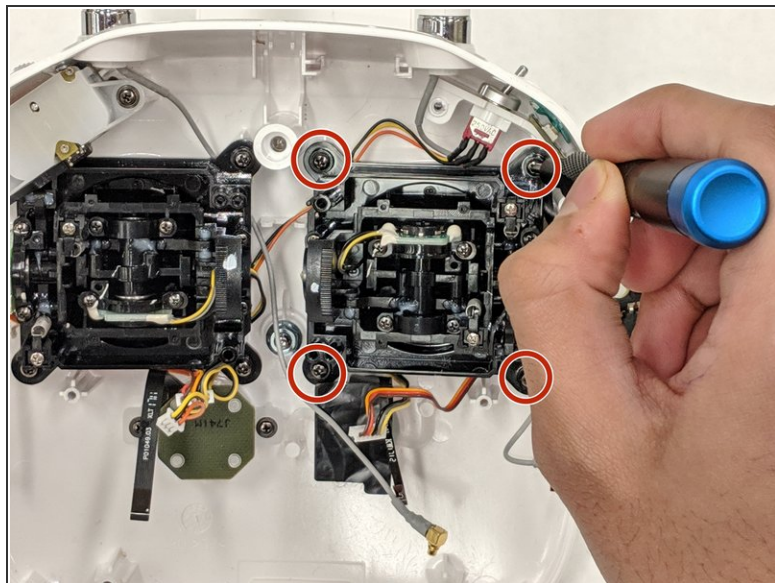
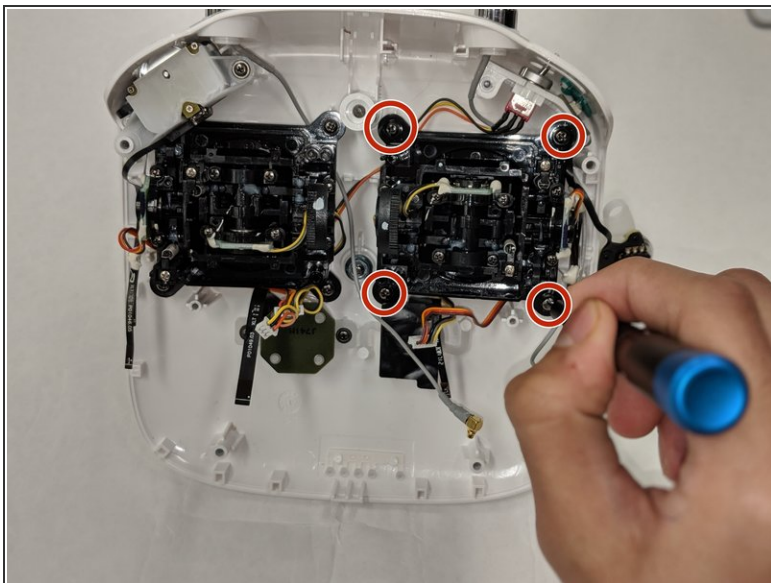


- Gently remove the Gimbal Wheel control component from the body.

⚠ Take caution with the fragile wires when removing this component.

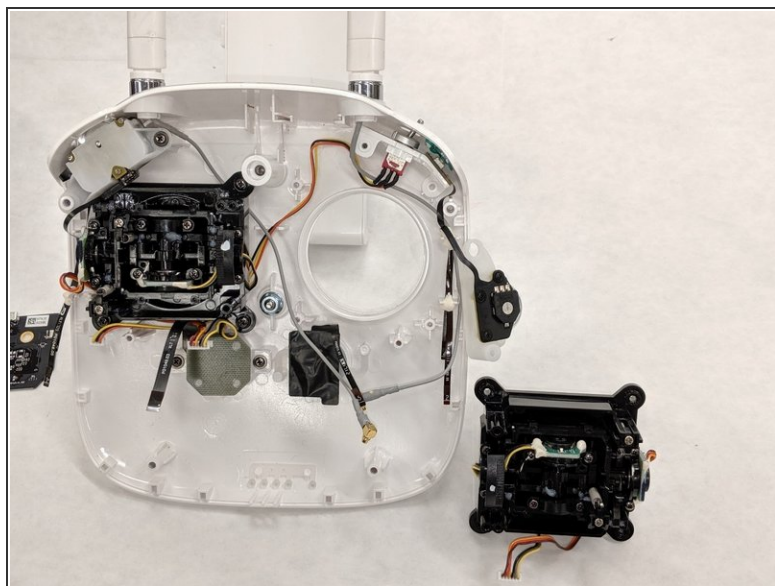
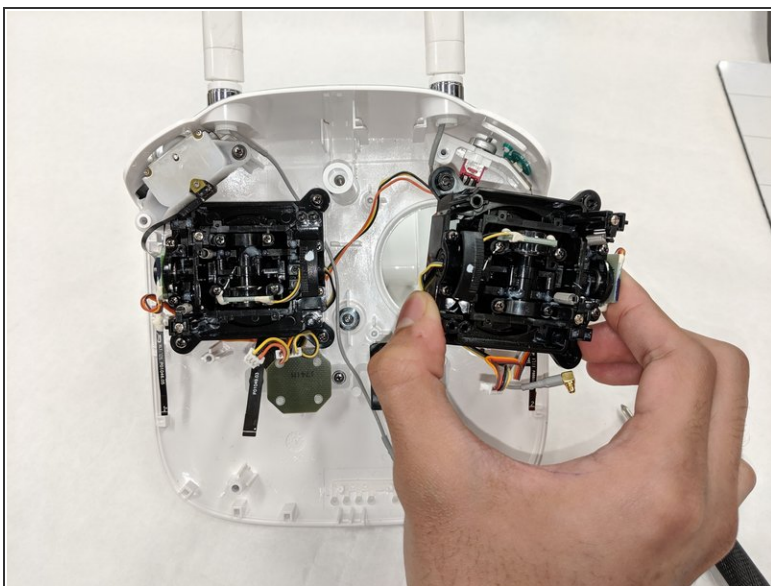


## Step 11



- Remove the 4 10.7 mm Phillips screws using a Phillips #1 screwdriver.

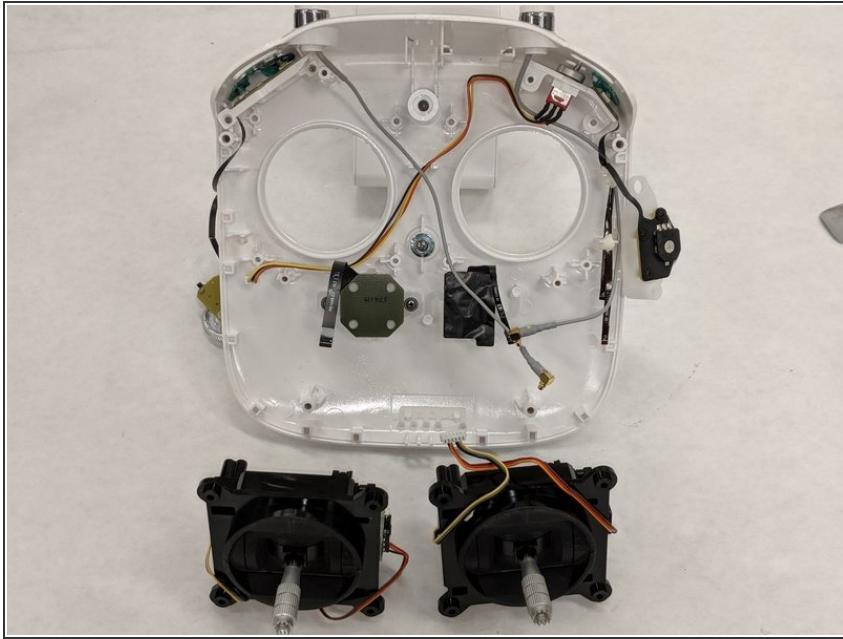
## Step 12



- Gently remove the Control Stick component.

⚠ Take caution with small and fragile wires to avoid breaking them.

## Step 13



- Repeat step 9 through 12 to remove the other Control Stick.

To reassemble your device, follow these instructions in reverse order.