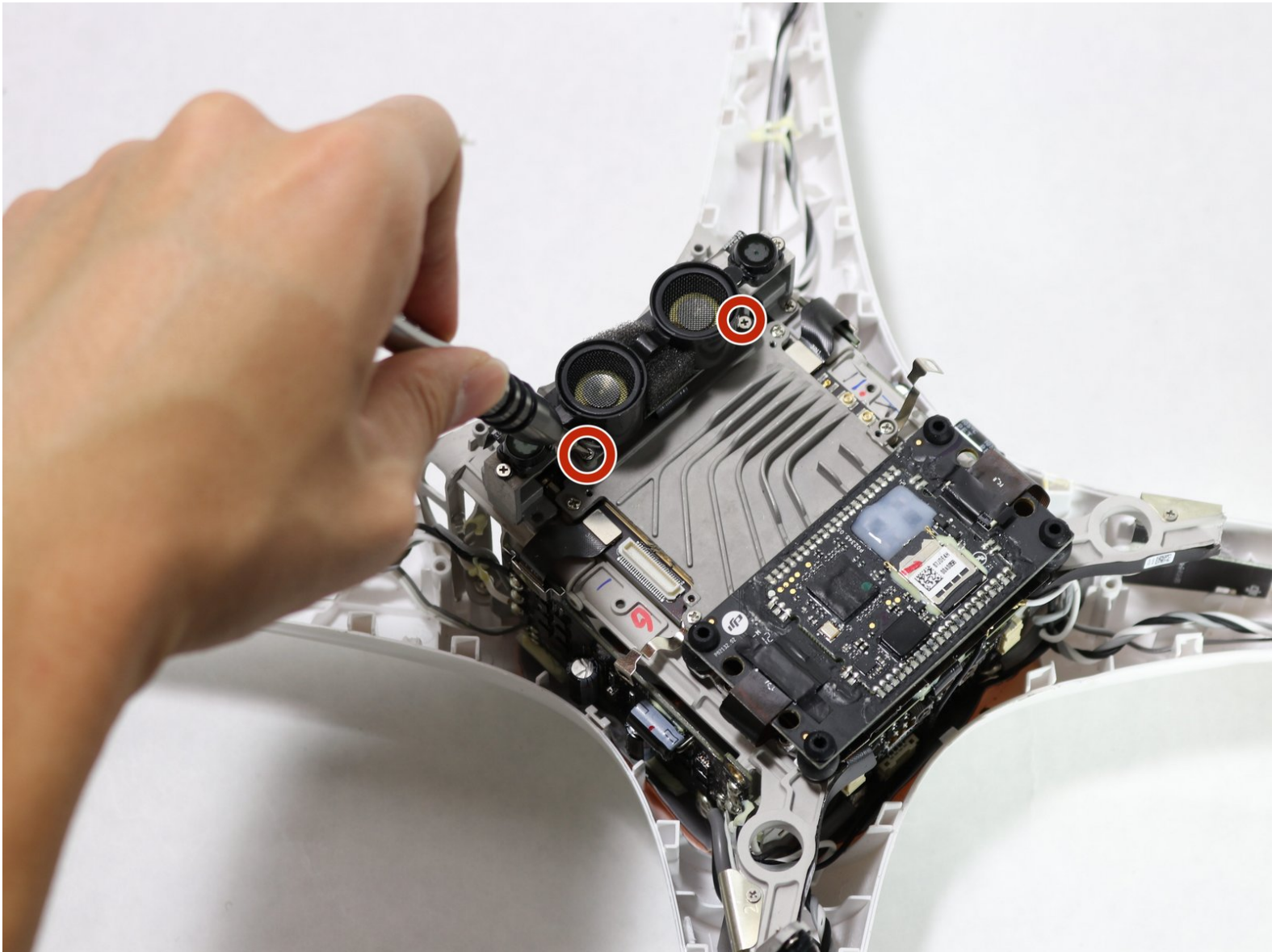




# DJI Phantom 4 Advanced Ultrasonic Sensor Replacement

How to replace the DJI Phantom 4 Advanced ultrasonic sensors.

Written By: David Hudson



## INTRODUCTION

The ultrasonic sensors use sound waves to help position the drone in three-dimensional space. If your DJI drone experiences either erratic flight behavior or the inability to hold its position when staying still in the air your ultrasonic sensors may need to be replaced.



### TOOLS:

- [2mm Hex Key](#) (1)
  - [Metal Spudger](#) (1)
  - [1.5mm Hex Screwdriver](#) (1)
  - [JIS #000 Screwdriver](#) (1)
  - [iFixit Opening Tools](#) (1)
-

## Step 1 — Propeller



- Use your finger tips to pinch the damaged propeller.
- Twist the propeller counterclockwise and pull up to remove.

## Step 2 — Shell



- Remove the eight 7 mm hex screws by turning counterclockwise with a 2 mm hex bit.

### Step 3



- Pry the LED motor covers off with a metal spudger.
- ⓘ The prying location is marked by an indent that points outward from the arm.

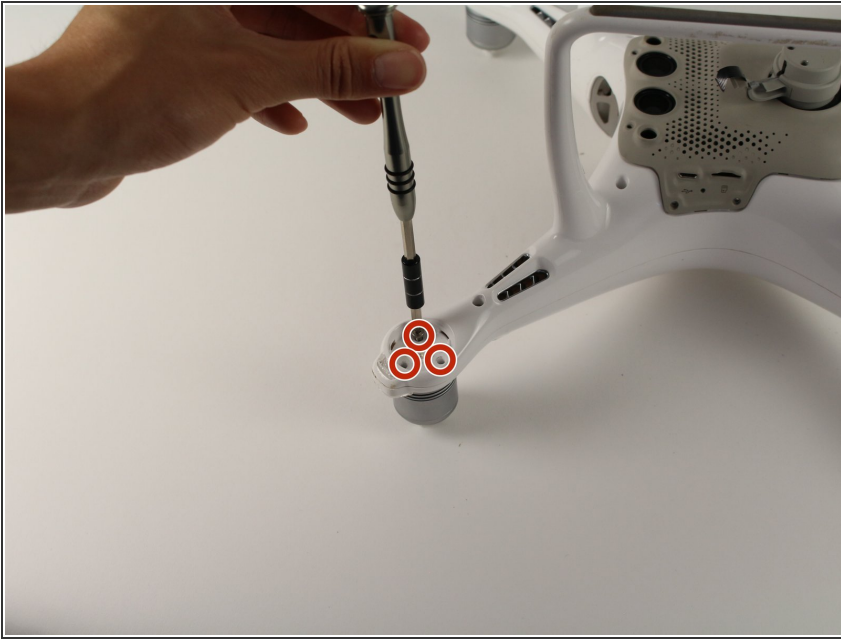
### Step 4



- Pry the paper covering off the four corners with a metal spudger.



## Step 5



- Remove the twelve 8.7 mm hex screws with a 2 mm hex bit from the motor bases.

## Step 6



- Flip the drone on its back
- Remove the eight 4.5 mm hex screws by turning them counterclockwise with a 1.5 mm hex bit.
- Separate the mesh from the drone by pulling up gently and rocking left to right.

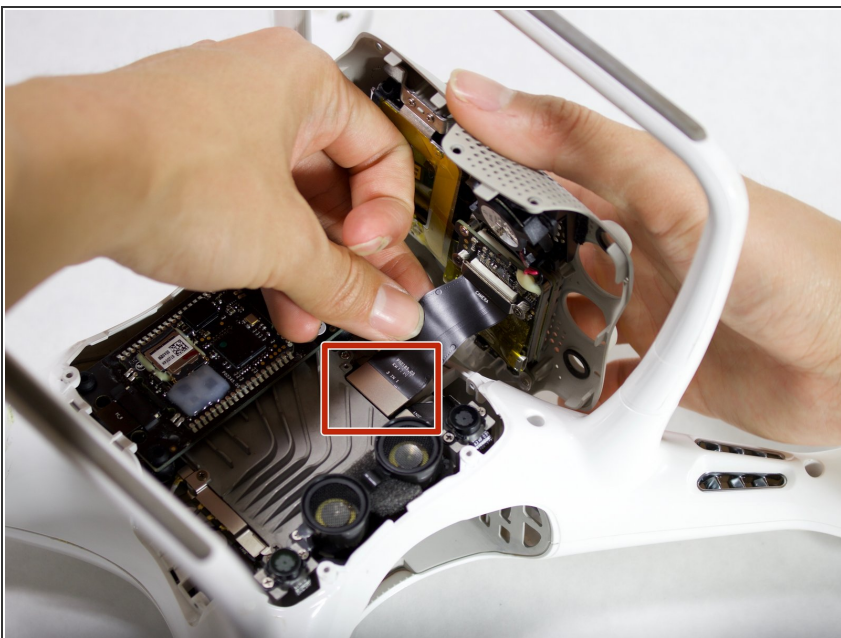
⚠ The cable connects from the camera to the drone. Pulling up could rip the connection. Tilt the mesh 90 degrees towards the cable.

## Step 7



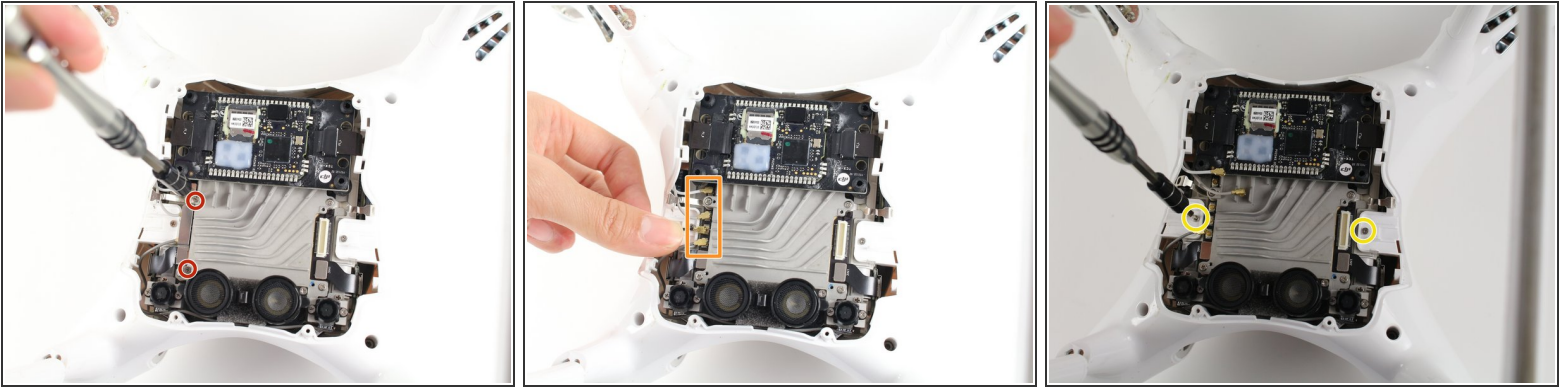
- Remove two 1.2mm screws using the JIS #000 bit from the camera cable retaining bracket.

## Step 8



- Lift the camera connector at one end with your hand and remove the mesh.

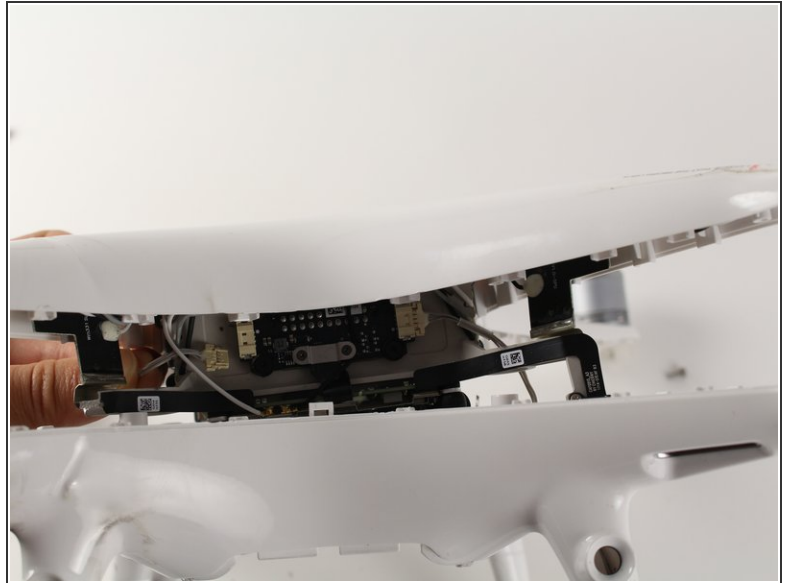
## Step 9



- Remove the two 1.2 mm screws using a JIS #000 bit from the antenna retaining bracket.
- Pull the four U.FL antennae up.
- ⚠ The U.FL antenna connectors are fragile.
- Remove the two 4 mm screws using a JIS #000 bit.



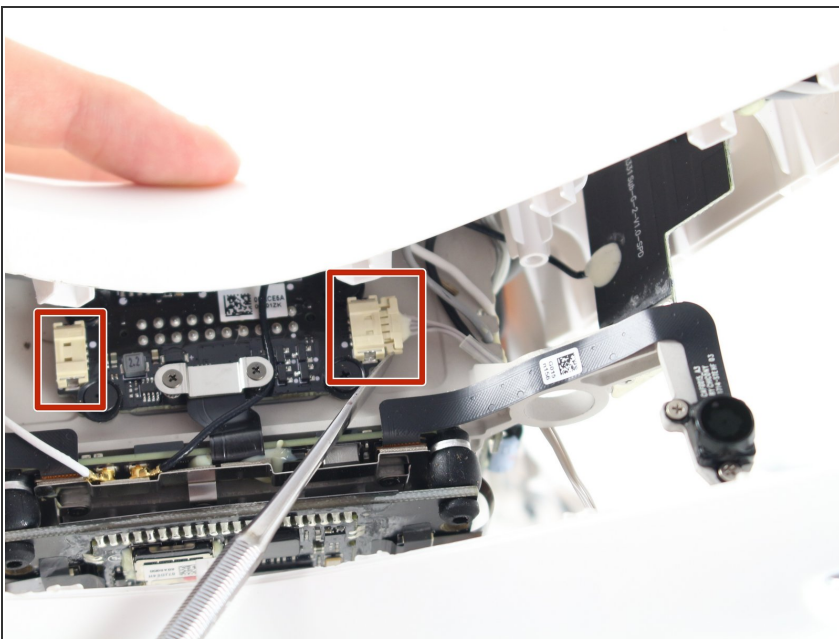
## Step 10



- Pry apart the clamshell at the motor end.
- Separate the clamshell.

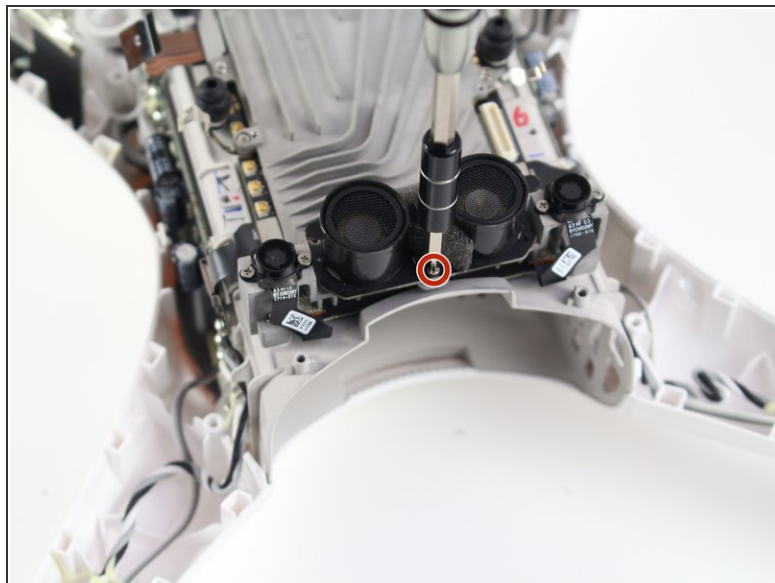
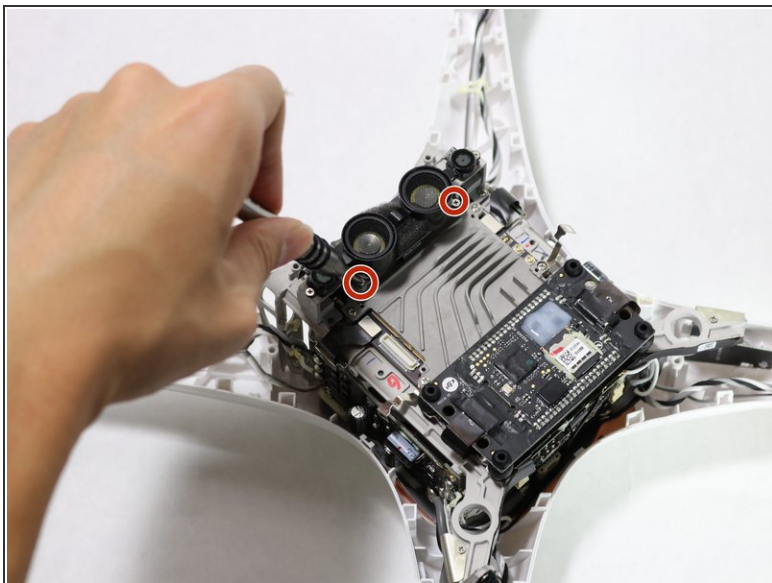
⚠ Two wires connect from the lower frame to the upper frame at the front of the drone. Pulling the clamshell apart hard may damage the connectors and wires.

## Step 11



- Press the connector tabs with a spudger and pull on the wire simultaneously.
- Remove the shell from the rest of the drone.

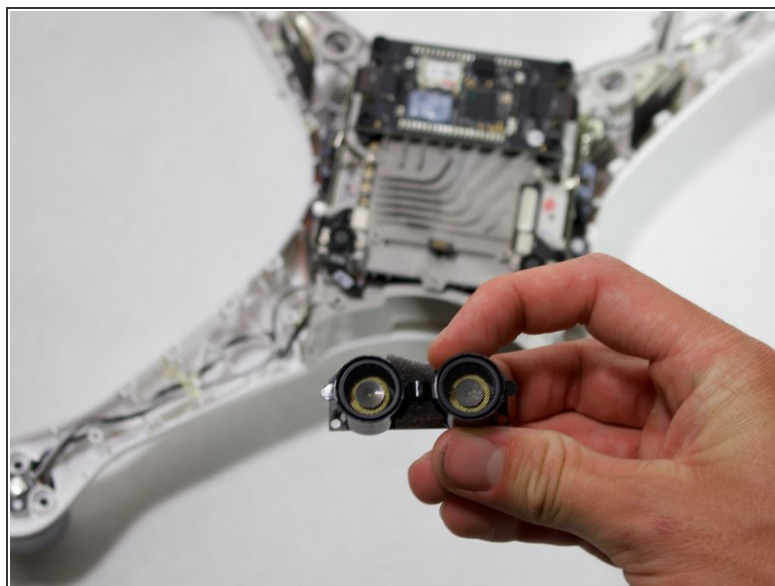
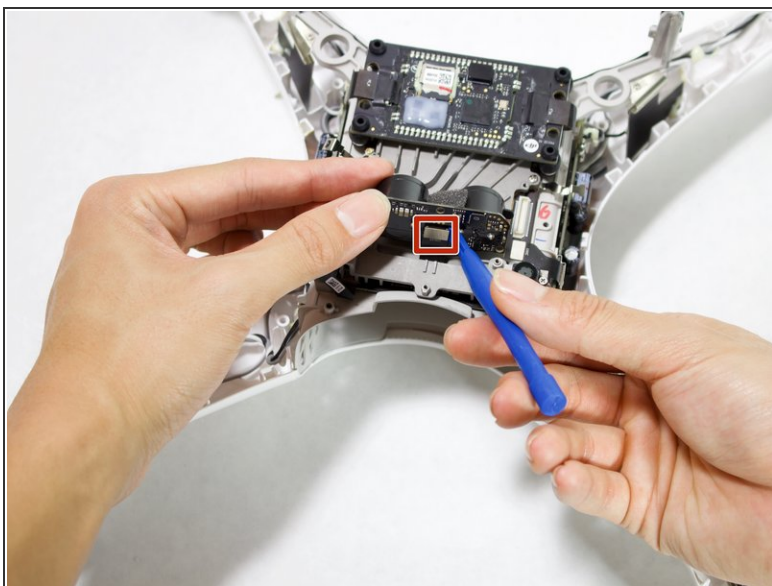
## Step 12 — Ultrasonic Sensor



- Remove the three 2.8 mm screws with a JIS #000 screwdriver.

**i** The screw on the back of the ultrasonic sensor is covered by foam.

## Step 13



- Pry the ribbon cable off the ultrasonic sensor using a plastic opening tool.

To reassemble your device, follow these instructions in reverse order.