



DKnight MagicBox II Front Panel Assembly Replacement

This guide will explain how to remove the front panel assembly. This step will be needed to remove all other components inside the device

Written By: Anthony



INTRODUCTION

You will need to follow this guide step-by-step in order to separate the device into two piece. In doing so you will be able to replace the front panel, if damaged, as well as get to the other components inside of the device.

TOOLS:

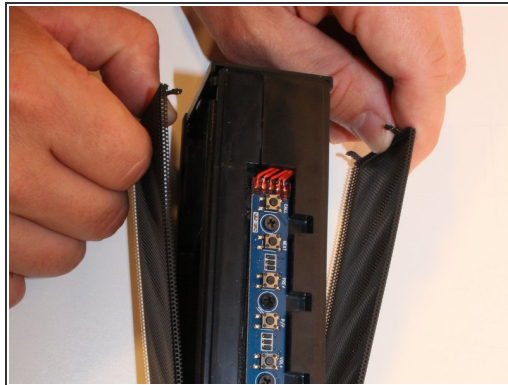
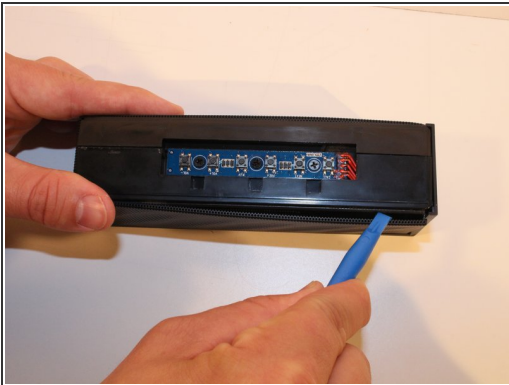
- [iFixit Opening Tools](#) (1)
 - [Phillips #1 Screwdriver](#) (1)
-

Step 1 — Front Panel Assembly



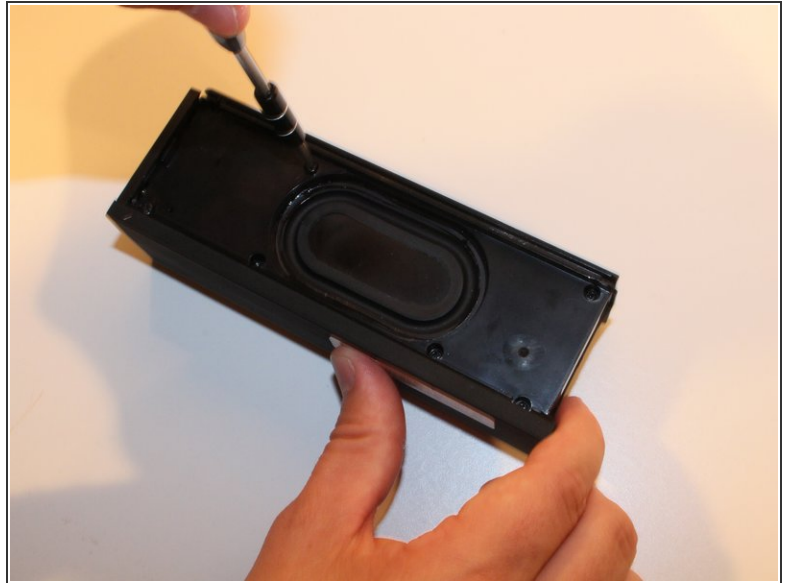
- Using Blue Plastic opening tool pry the top rubber cover, then using the same tool remove the bottom panel

Step 2



- There are four prongs on the grill in the corners, closest to the power button switch. Use the plastic opening tool to release all four prongs from the panel, and then slide the plastic opening tool along the edge of the grill to allow it to easily slide off.

Step 3



- On the back panel (Opposite to the side containing the two speakers), Use the Philips head PH1 to remove all 7 screws (Screws: Head PH1 , Length 7cm).

Step 4



- Pull apart the two faces to separate the back panel from the front face plate.

To reassemble your device, follow these instructions in reverse order.