



# DKnight MagicBox II Motherboard Replacement

This guide will show you how to fully remove and replace the motherboard on the Dknight Magicbox II.

Written By: Anthony



## INTRODUCTION

In this guide we will show you a step-by-step replacement guide for the Motherboard. You want to be careful when unplugging the speakers and battery from the board itself in order to not damage any of the wires.

The motherboard contains the following components:

Power Switch

Bluetooth sensor

Auxiliary port

Charging Port

---

### TOOLS:

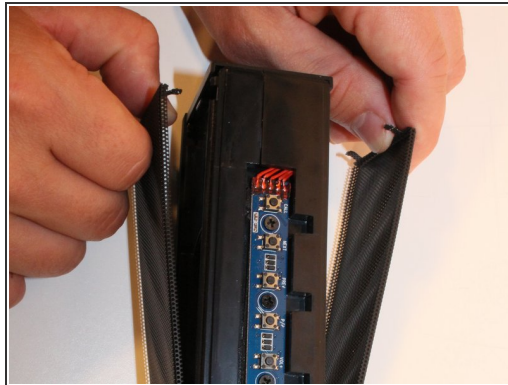
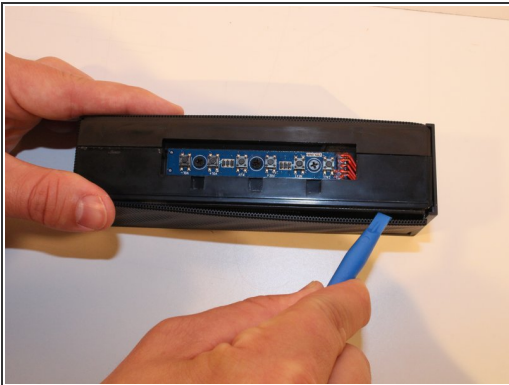
- [Phillips #1 Screwdriver](#) (1)
  - [iFixit Opening Tools](#) (1)
  - [Tweezers](#) (1)
  - [Heavy-Duty Spudger](#) (1)
-

## Step 1 — Front Panel Assembly



- Using Blue Plastic opening tool pry the top rubber cover, then using the same tool remove the bottom panel

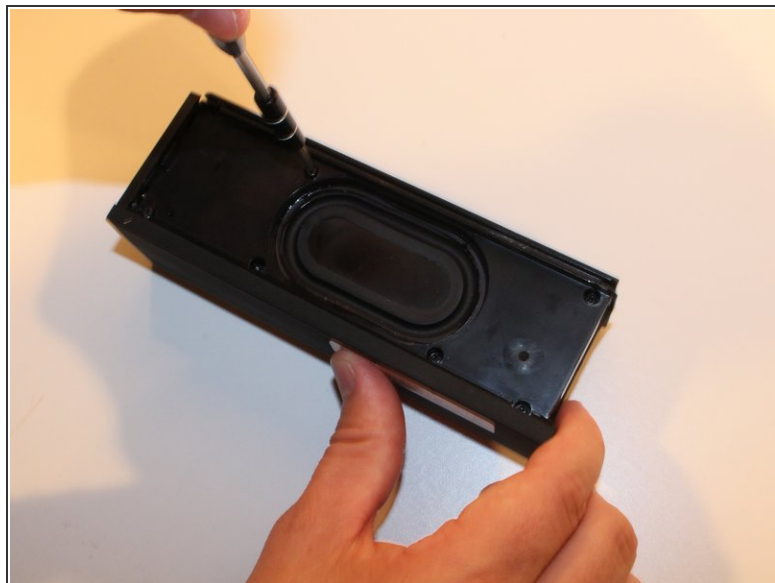
## Step 2



- There are four prongs on the grill in the corners, closest to the power button switch. Use the plastic opening tool to release all four prongs from the panel, and then slide the plastic opening tool along the edge of the grill to allow it to easily slide off.



### Step 3



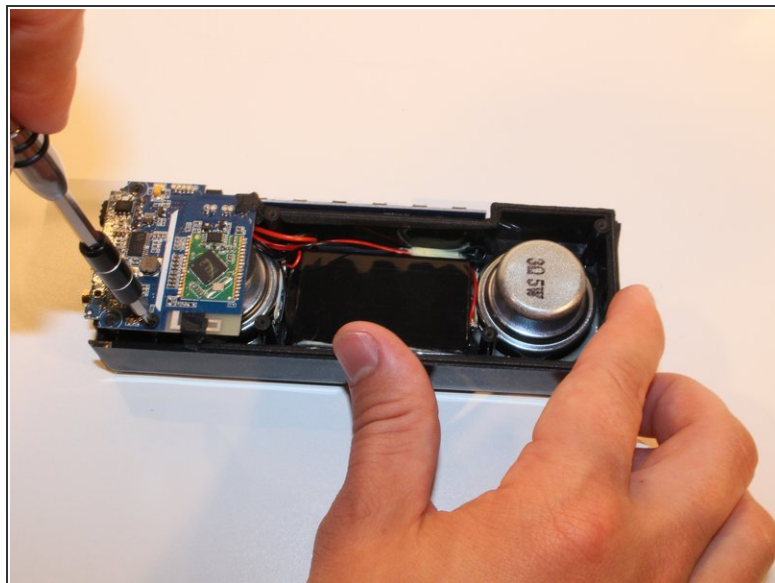
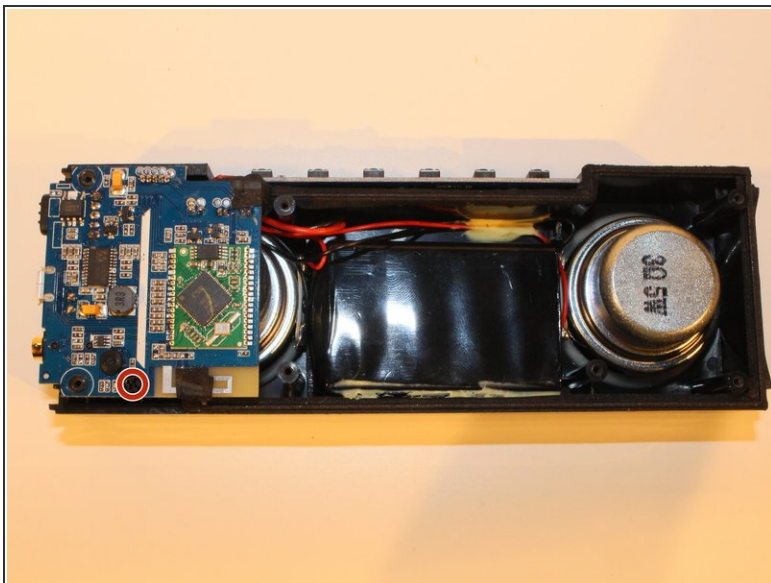
- On the back panel (Opposite to the side containing the two speakers), Use the Philips head PH1 to remove all 7 screws (Screws: Head PH1 , Length 7cm).

### Step 4



- Pull apart the two faces to separate the back panel from the front face plate.

## Step 5 — Motherboard



- Remove the single screw holding the motherboard to the front panel (Screw : Head PH1, Size .5 cm)

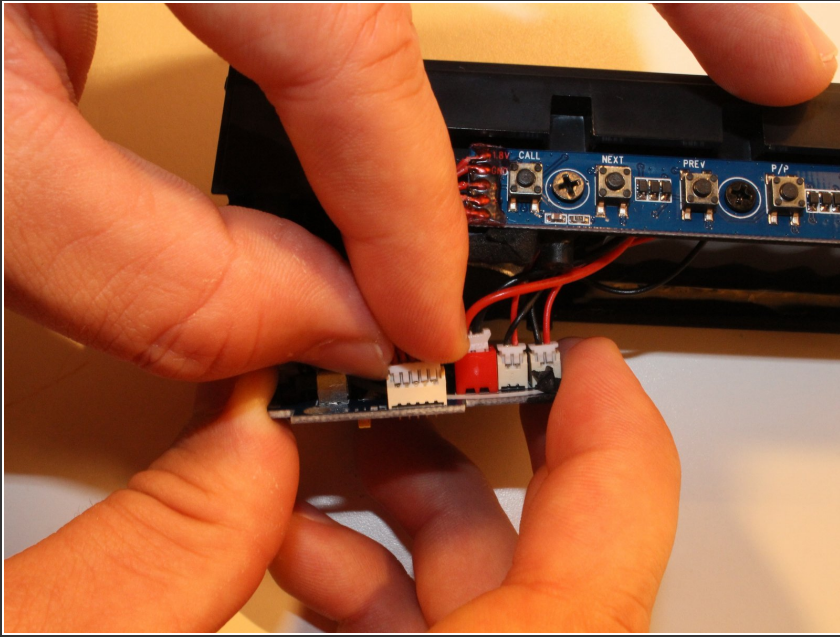
## Step 6



- Using your fingers gently pry the motherboard loose from the black insulant adhesive

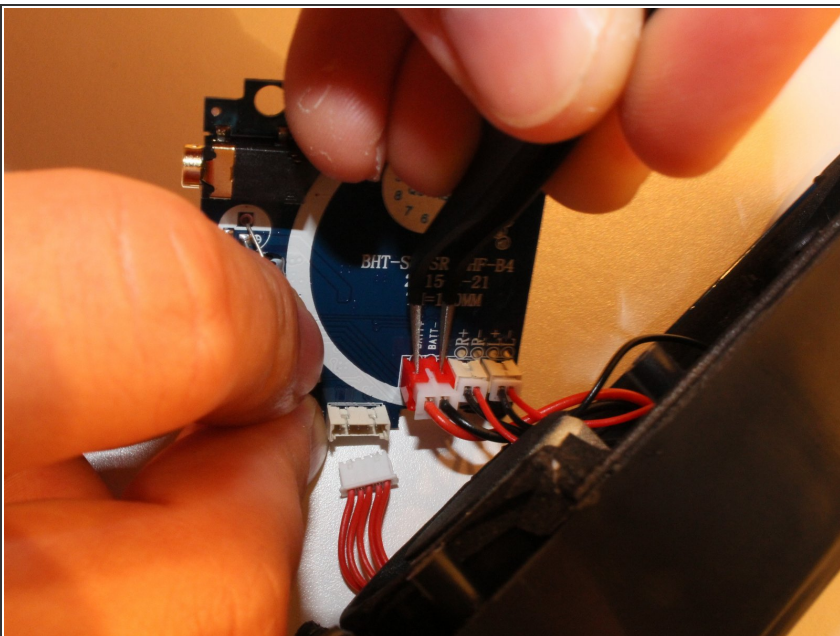


## Step 7



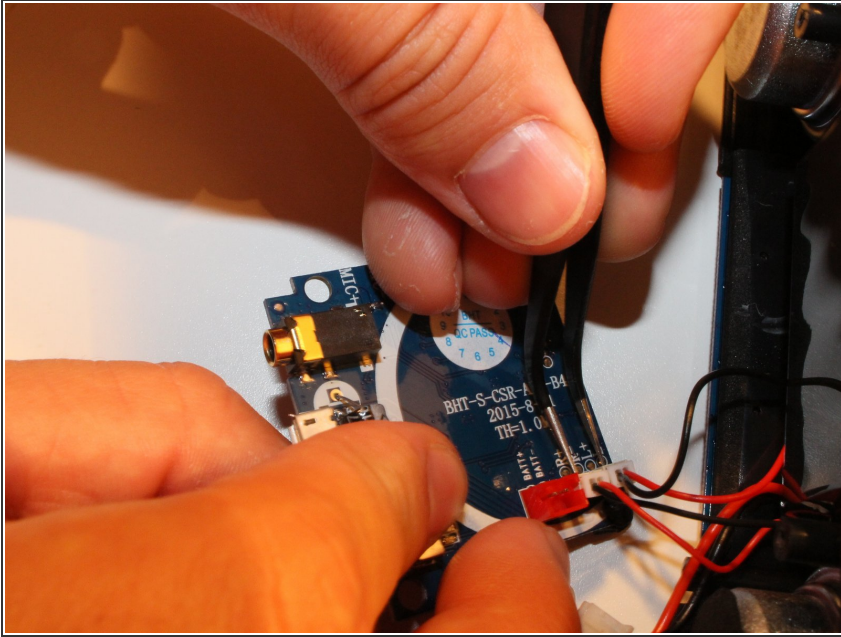
- Disconnect the Button Panel plug (Largest of the Plugs, it can be traced back to the button panel easily)

## Step 8



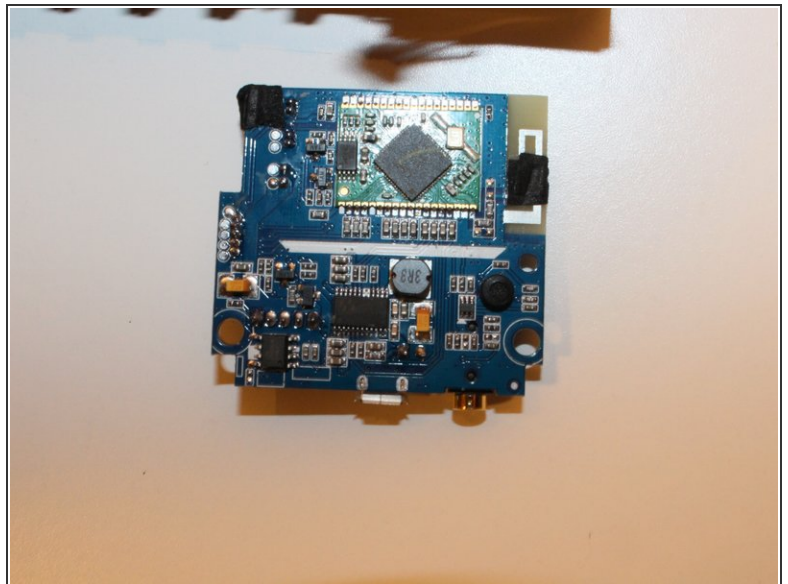
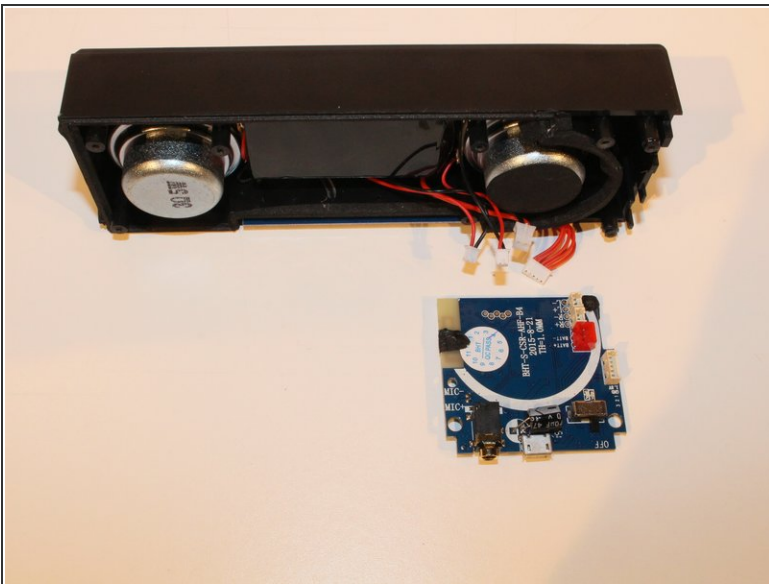
- Use the tweezers to push down on the safety prongs on the plastic switch. Then Disconnect the Power Wire plug by hand (Red medium),

## Step 9



- Use the tweezers to push down on the two safety prongs on the plastic switch. Then Disconnect the two Speaker plug connections by hand (Two Smaller Plugs)

## Step 10



- The Motherboard is now free from the speaker assembly

To reassemble your device, follow these instructions in reverse order.