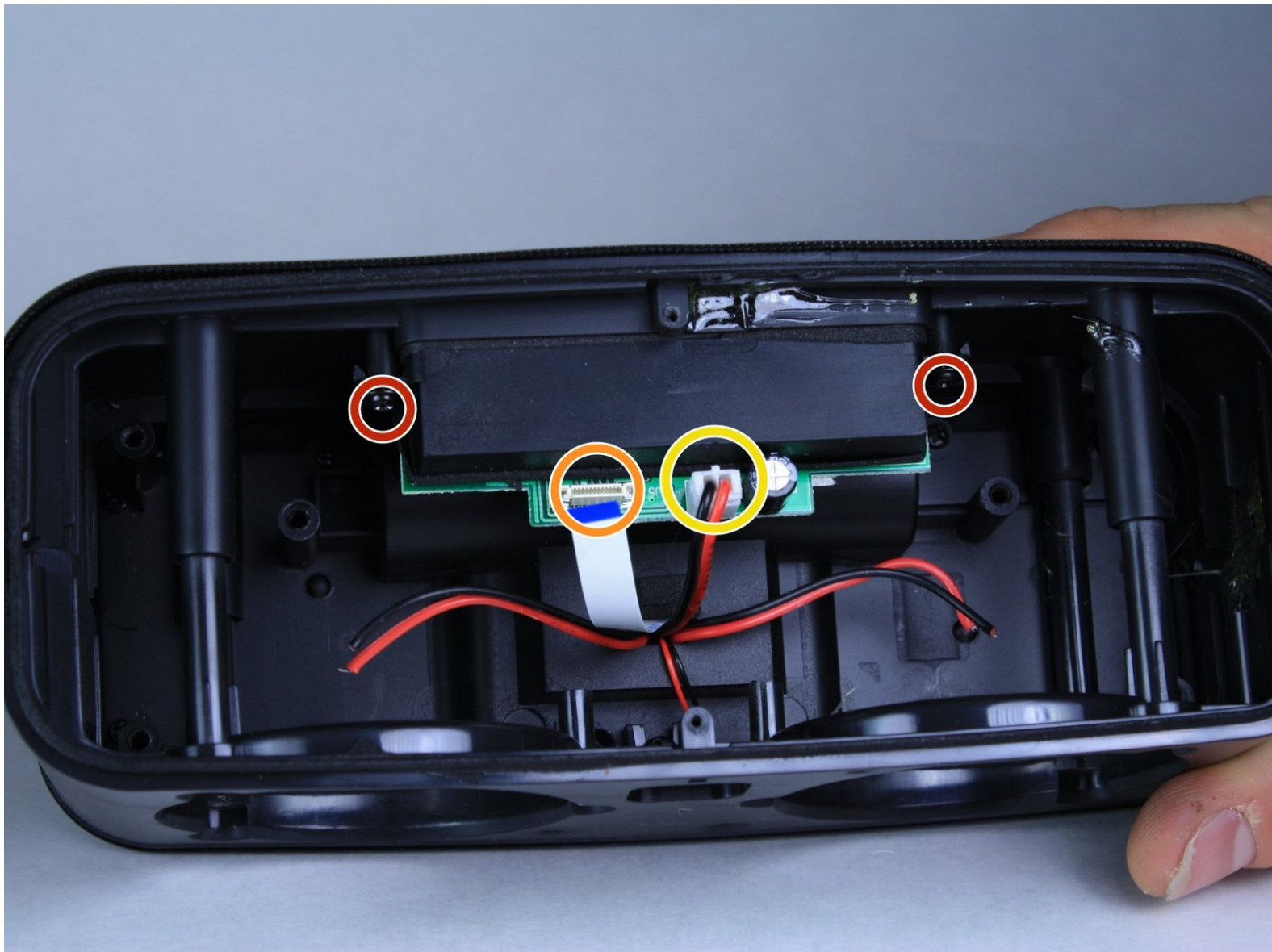




DOSS SoundBox Motherboard Replacement

This guide will help you remove the motherboard out of your DOSS SoundBox speaker.

Written By: Cassandra Remsing





TOOLS:

- [iFixit Opening Tools](#) (1)
- [JIS #00 Screwdriver](#) (1)

Step 1 — Grille Removal



- Use a small plastic opening tool to gently lift the side of the grille.
- Gently slide the tool to the front of the speaker.
- Repeat the process on the bottom of the grille.
- Gently pull the grille off of the speaker enclosure.

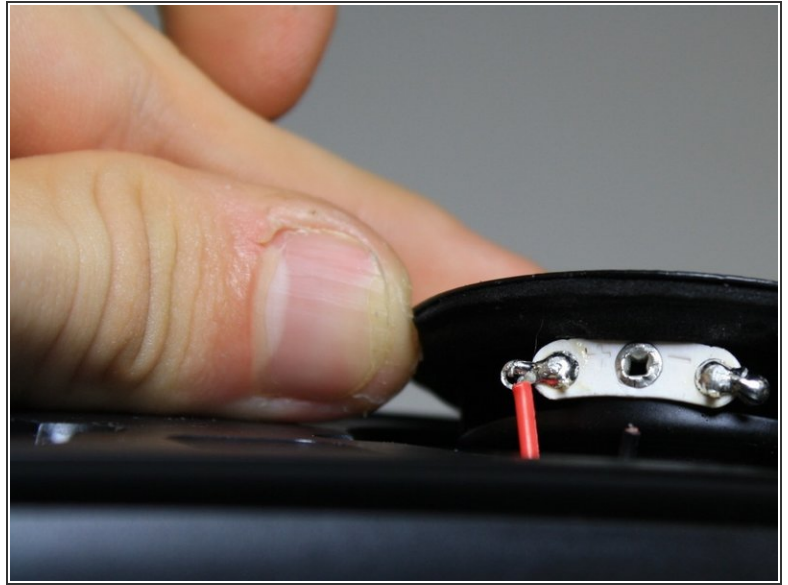
⚠ Pry with caution, for the grille is fragile.

Step 2 — Speaker Removal



- Use the JIS #00 screwdriver to remove the 3/32" screws that secure the speaker to the body.
- Remove the smaller 3/32" screws that secure the left side of the speaker with a JIS #1 screwdriver.
- ⓘ The smaller screws are still the same length, but they have smaller screw heads. You can use the same screwdriver for both.
- ☑ Using a Magnetic Mat throughout this process will help prevent losing screws.

Step 3




- Use the Plastic Opening Tool to gently lift the speaker enough to see the connected wires.


Step 4



- Use a soldering iron to de-solder the two speaker wires from the speaker itself.

- The speakers are ready to be removed and replaced.

 Ensure that the device is turned off when handling bare wire.

 Soldering iron is very hot.

Step 5 — Battery



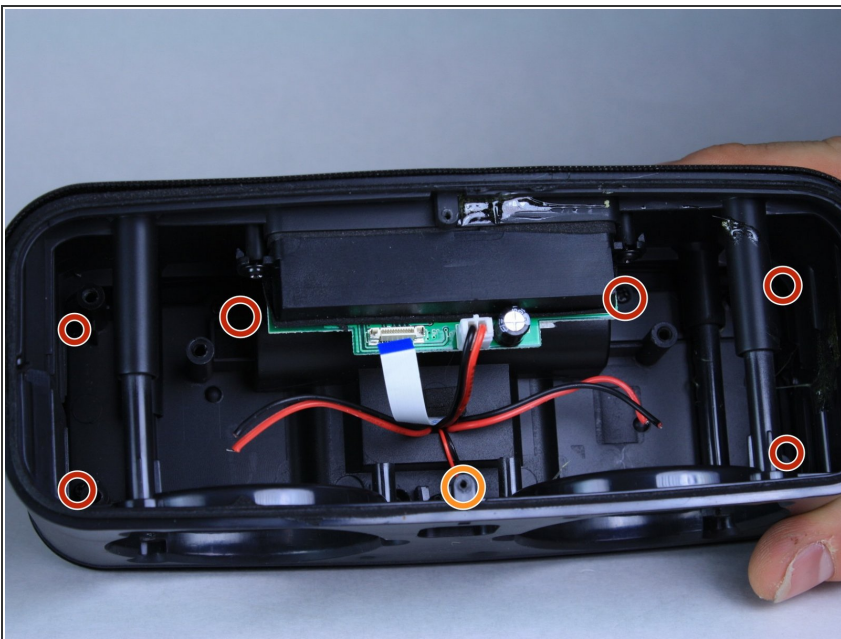
- Use a JIS #00 screwdriver to remove the four 3/32" screws that attach the base-plate to the speaker enclosure.
- ⓘ Use a magnetic mat to prevent the loss of screws.

Step 6



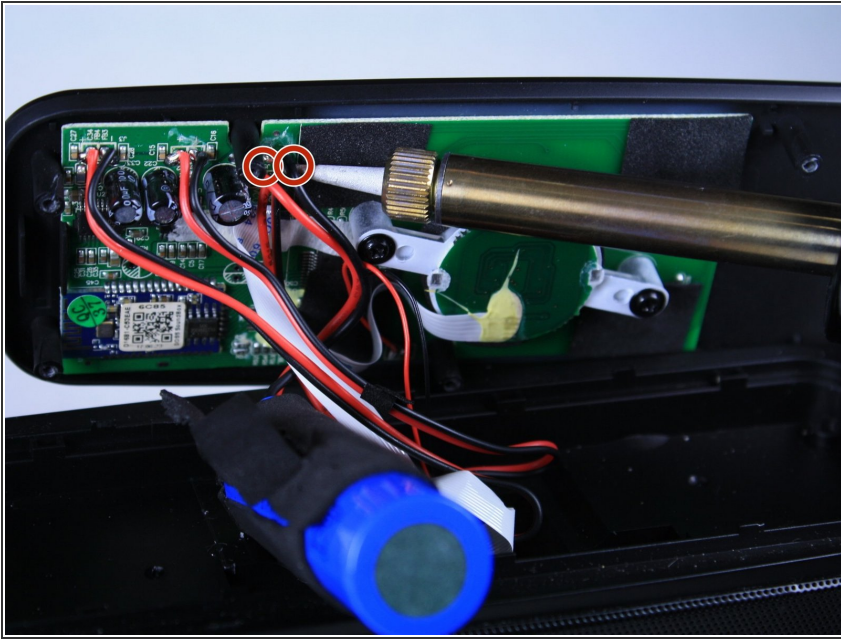
- Use a JIS #1 screwdriver to remove the six 3/32" screws marked with a red circle.
- Remove the two 1/16" screws marked with orange circles using a JIS #000 screwdriver.

Step 7



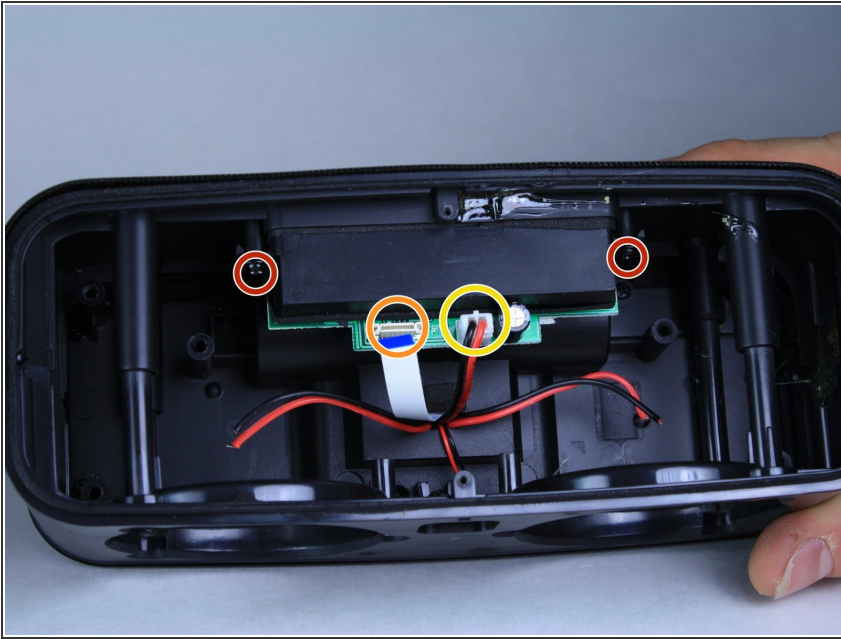
- Remove the six 3/32" screws marked with red circles using a JIS #00 screwdriver.
- Remove the larger 3/32" screw indicated by an orange circle using a JIS #1 screwdriver.
- Once the screws are removed, gently lift the top (where the touch controls are) off of the speaker.






Step 8



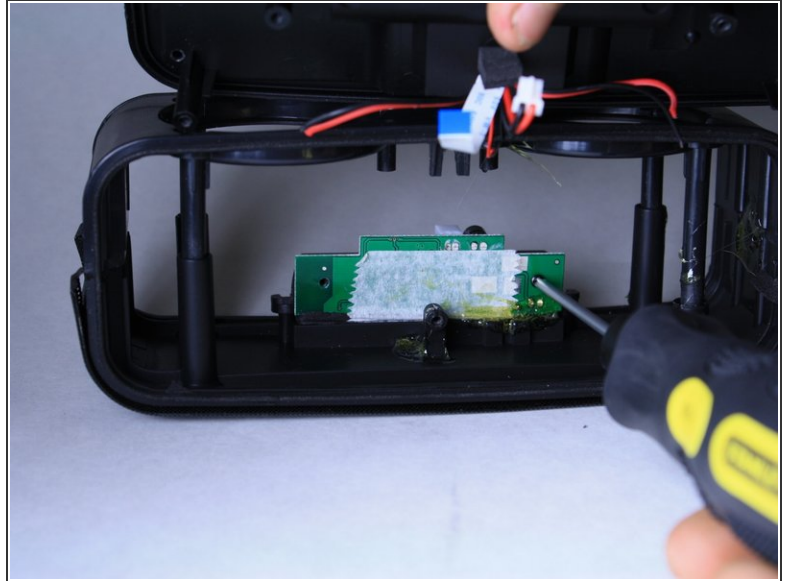
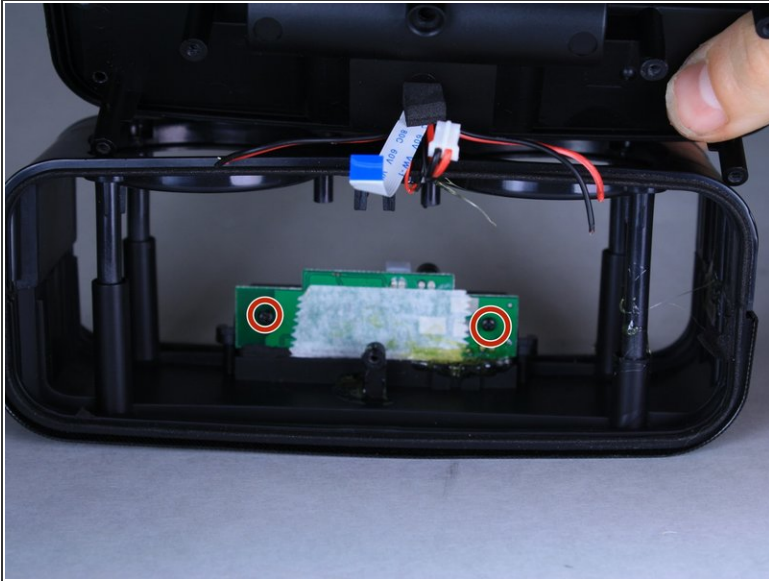
- De-solder the connections from the battery to the circuit board.
- ⓘ If you do not already have a replacement battery, you can purchase one [here](#).

Step 9 — Motherboard



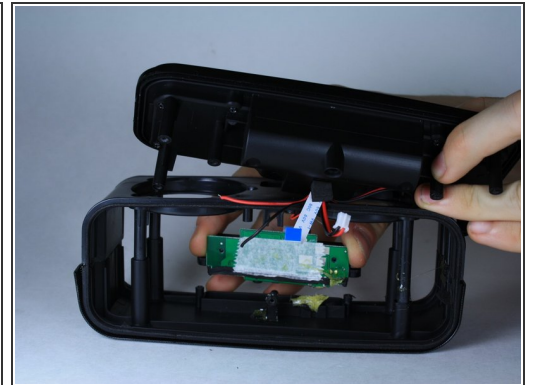
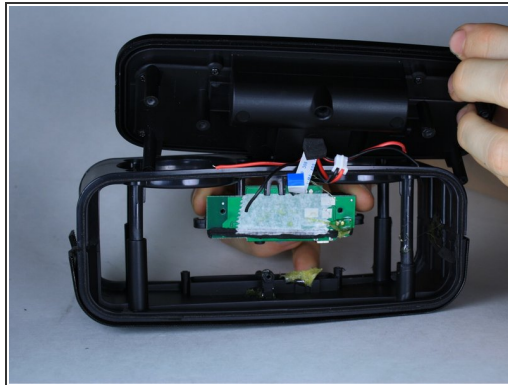
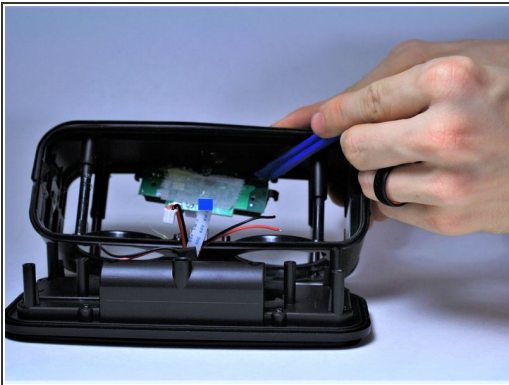
-  Follow the steps leading up to the actual battery removal, but do not actually remove the battery.
-  Remove the two 3/32" screws that attach the motherboard to the battery compartment using a JIS #00 screwdriver.
-  Use your fingers or a pair of tweezers to remove the clip holding the ribbon connector in place. The connector is indicated with an orange marker.
-  Be sure not to apply excessive force on the ribbon connector, as it can break.
-  Find the speaker connector, indicated by a yellow circle, and using your fingers disconnect it.

Step 10



- Locate and remove the two 3/32" screws, indicated by red markers, that fix the motherboard to the speaker enclosure.

Step 11



- Using the plastic opening tool, gently begin to pry the circuit card away from the speaker enclosure.
- ⚠ There is adhesive on the top of the motherboard, use caution while prying to avoid breakage.
- Using your fingers, you can now remove the motherboard.

To reassemble your device, follow these instructions in reverse order.