



# DVD Drive Belt Replacement

Replace the belt of DVD Player

Written By: Tomo

A photograph showing two identical black, circular DVD drive belts laid out on a light gray surface. Above the belts is a small white rectangular label with a black border containing the text 'Φ 22 × T1.6'.

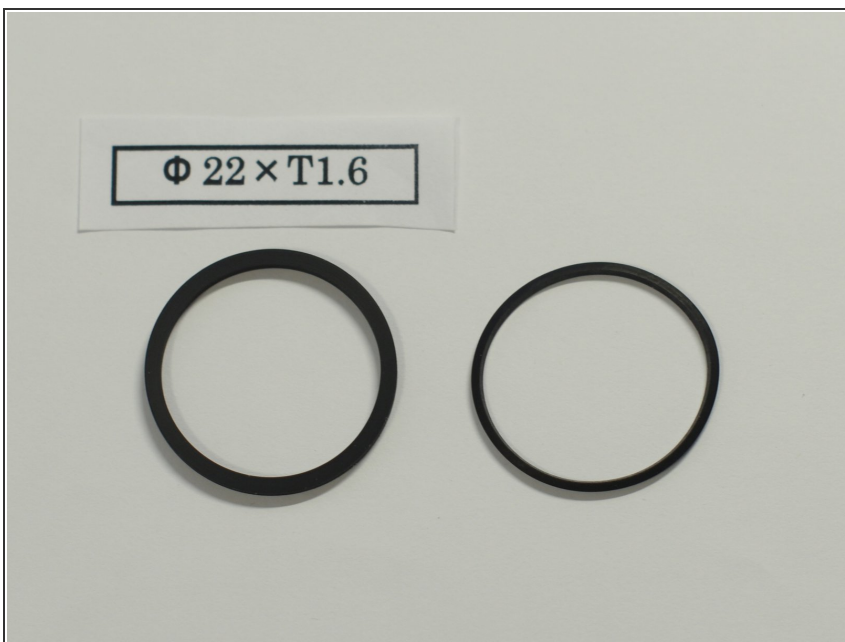
$\Phi 22 \times T1.6$



## TOOLS:

- [Phillips #0 Screwdriver](#) (1)
-

## Step 1 — Prepare the new belt



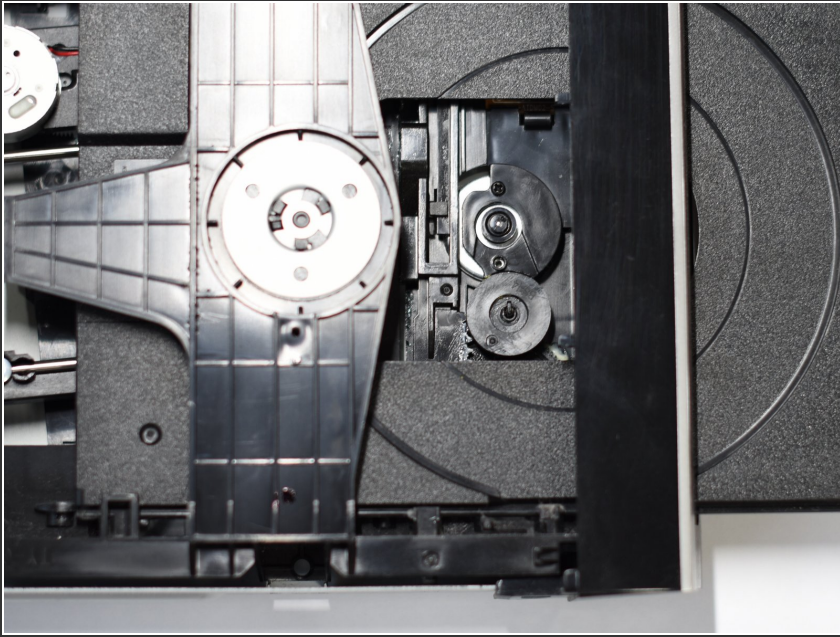
- Prepare the new belt.
- In my case, I prepared the  $\phi 22\text{mm} \times \text{T1.6}$

## Step 2 — Remove the TOP cover



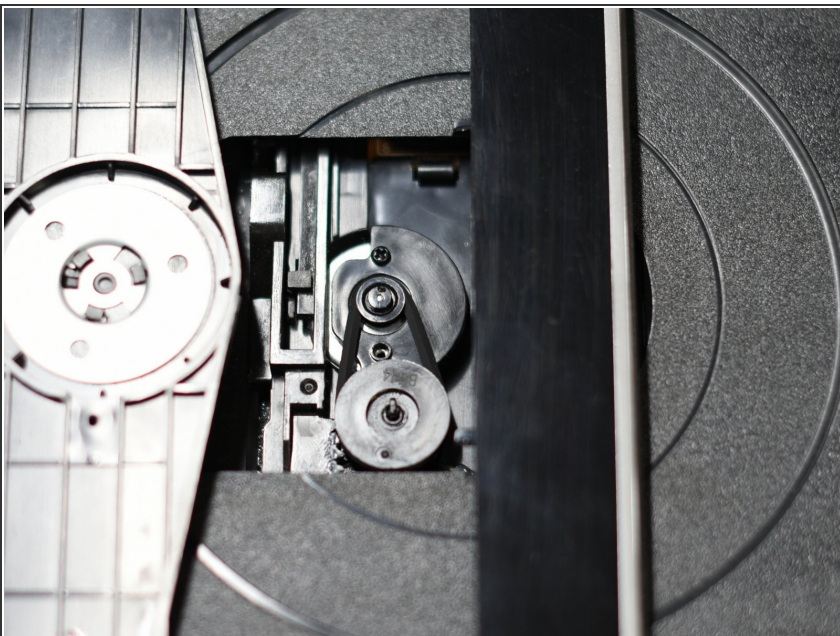
- Remove the TOP cover
- Remove 5 screws

### Step 3 — Remove the current belt



- Open the tray
- Remove the current belt

### Step 4 — Put the new belt



- Put the new belt

To reassemble your device, follow these instructions in reverse order.