



Dashcam DOD LS300W Battery Replacement

How to change the internal battery of a dashcam.

Written By: Pierre



INTRODUCTION

After one year the dashcam lost date and time settings. This is an easy repair for anyone with little solder skills.



TOOLS:

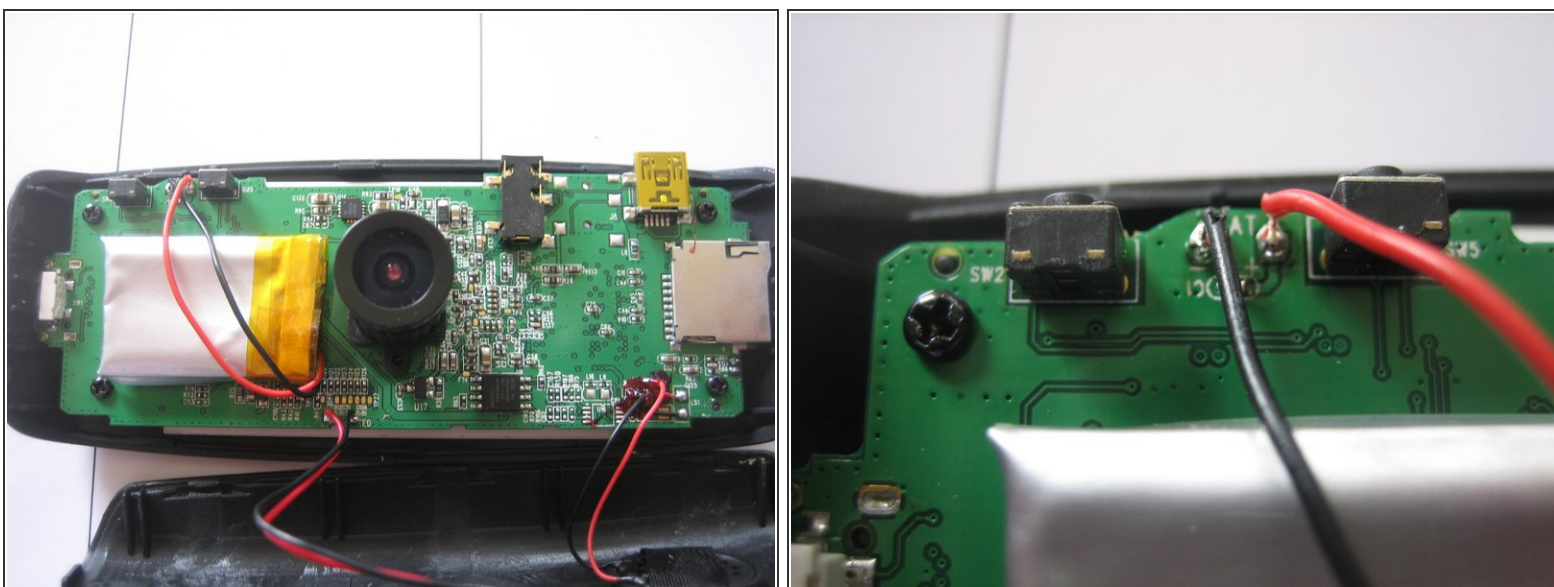
- [Soldering Iron](#) (1)
 - [iFixit Opening Tools](#) (1)
-

Step 1 — This is the dashcam DOD LS300W



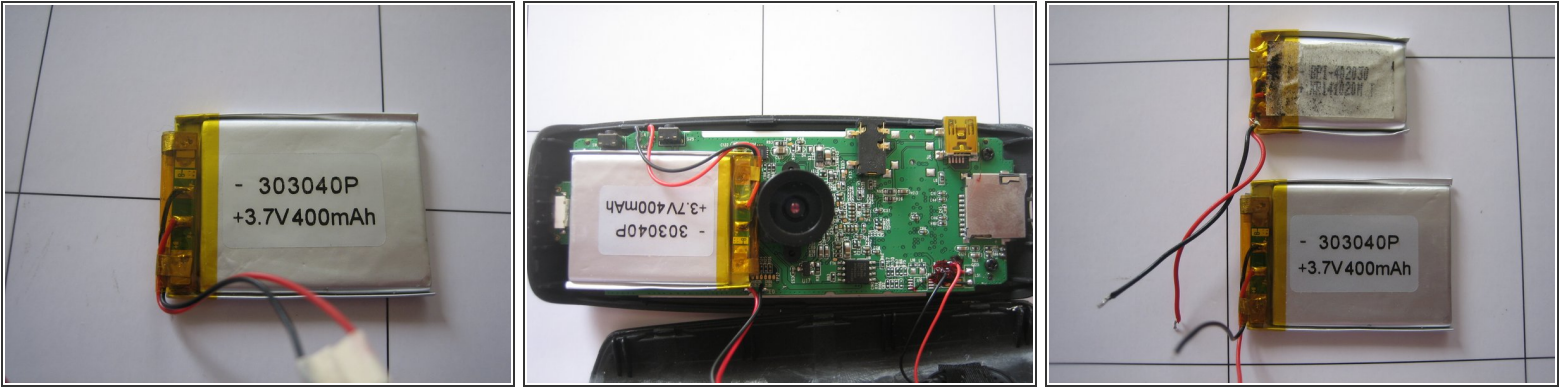
- Pry your nail or an opening tool to open the dashcam.

Step 2



- Now you see the inside of the dashcam. Notice the connection of + and -.
- Desolder the old battery. This is a 250mAh.

Step 3



- The new battery is 400mAh. and fits just in the battery location.
- New battery in place and soldered.
- See the difference between old and new battery.

Step 4



- Put both parts together to close the dashcam.
- Charge battery to full level, and your are ready to go.
- Good luck and thanks for watching.

To reassemble your device, follow these instructions in reverse order.