



De Longhi Heat Recovery Unit Sensor Replacement

If your heat recovery unit has a temperature sensor fault, you may need to replace the temperature sensor.

Written By: Smilzo



INTRODUCTION

Here is how to replace the temperature sensor on your heat recovery unit.

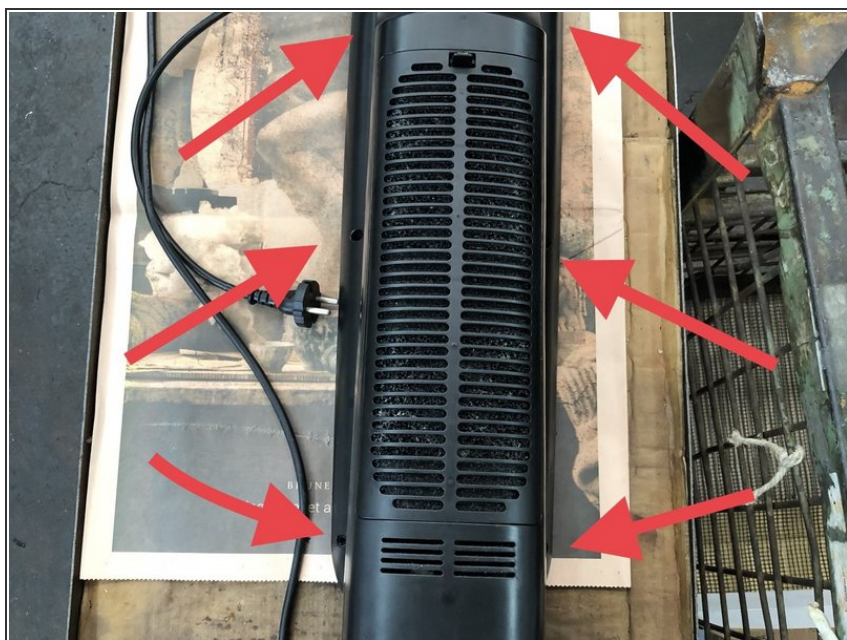
[Temperature sensor with probe for De Longhi heat recovery unit](#)

Step 1 — Temperature Sensor



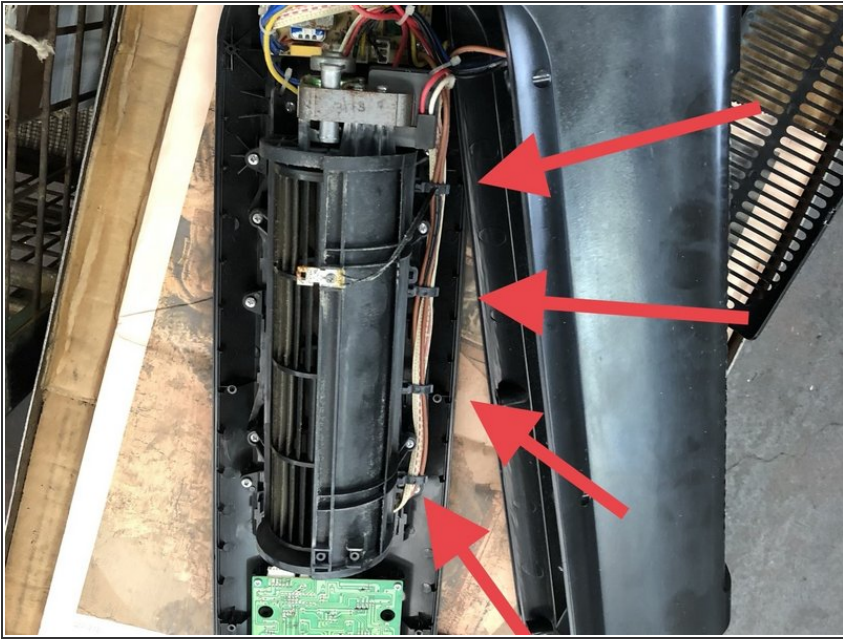
- ❗ Heat-recovery unit bricked with PF error (fault temperature sensor)

Step 2



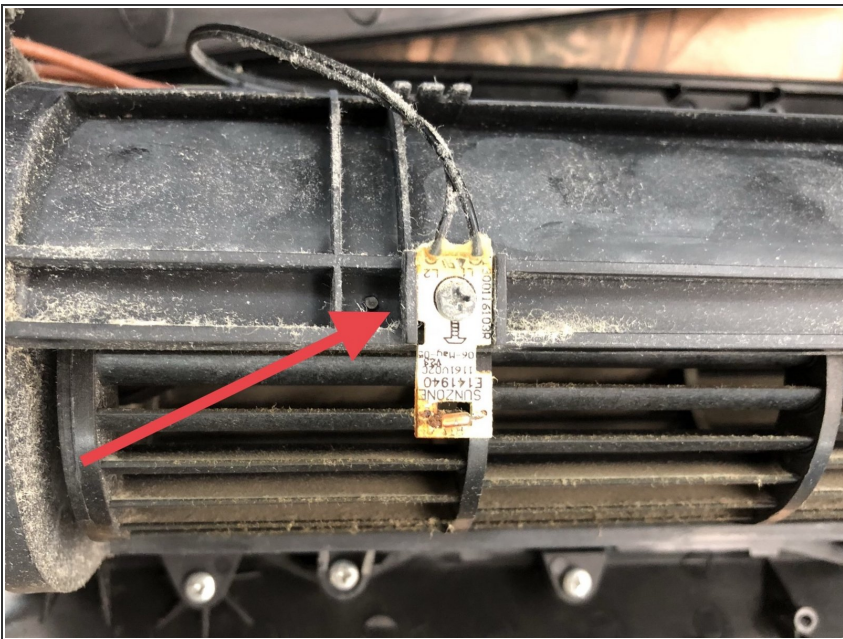
- Remove the four Phillips screws with a Phillips screwdriver.
- Remove the remaining 2 screws with a Torx screwdriver.
- Remove the cover

Step 3



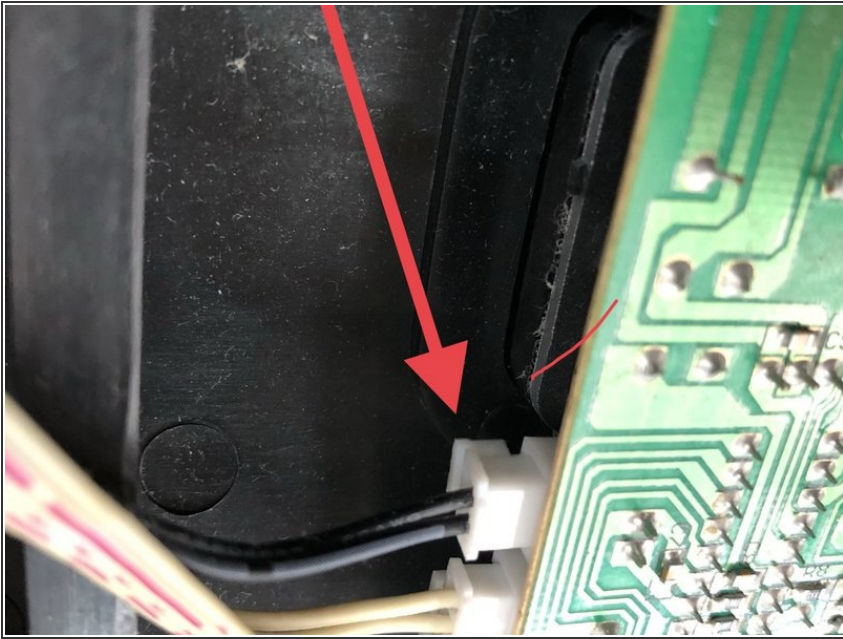
- Open the clamps by unhooking them with pliers or flathead screwdriver.

Step 4



- Unscrew the Phillips screw to remove the temperature sensor.

Step 5



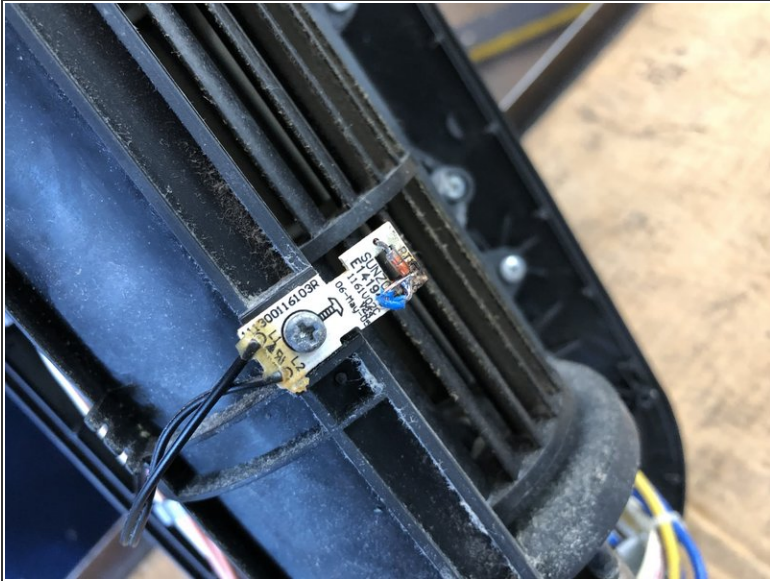
- Unclip the temperature sensor connector from the motherboard.

Step 6



- ❗ The temperature sensor had broken because it was corroded by moisture and therefore rusted.

Step 7



- With a soldering iron solder I proceeded to weld the broken part and connect the 2 tracks by applying electric wire and tin.
- If the component can not be repaired, you can find the complete electronic board replacement [here](#)

To reassemble your device, follow these instructions in reverse order.